

Corner Wall Mount Camera Bracket

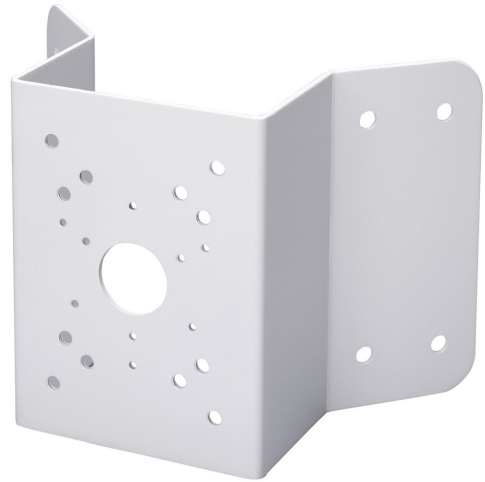
Model: MB1026

Technical Specifications

Heavy duty coated SECC wall mount corner bracket for surveillance cameras.

Model: MB1026	
Materials	SECC
Dimensions	243 x 170 x 138mm
Pipe Thread	N/A
Operating Conditions	-40° ~ 60°C / 90% RH (max)
Load Bearing Capacity	10.0kg
Weight	1.70kg

Product specifications and bracket compatibility are subject to change.



Bracket Compatibility

This bracket is compatible with the following cameras from VIP Vision and/or Securview Victory Series.



VIP Vision™ IP Surveillance Cameras

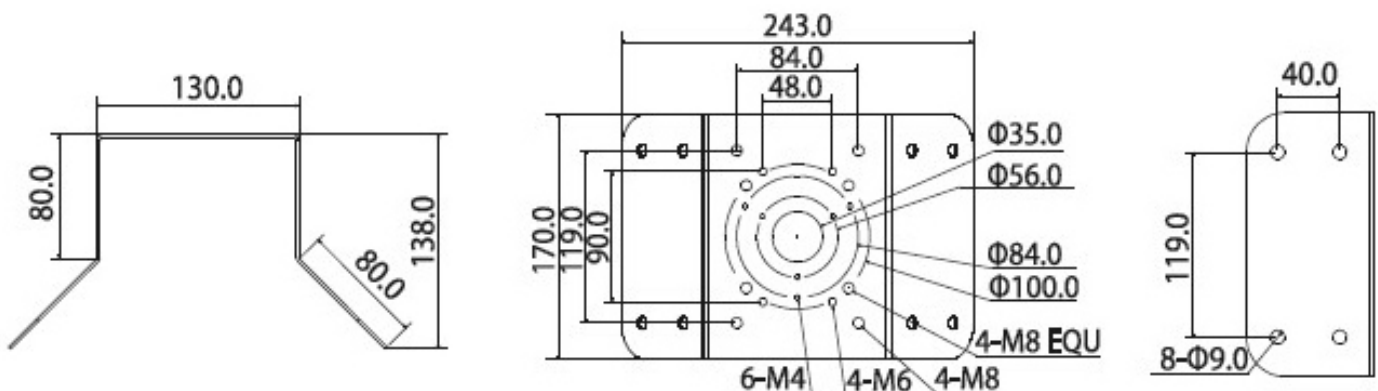
Requires adapter/junction box for compatibility (all models that use MB1020/1021/1022/1023/1033); directly compatible with CAM372, CAM364.



Securview Victory Series™ HD Over Coax Cameras

Requires adapter/junction box for compatibility (all models that use MB1020/1021/1022/1023/1033).

Product Diagram



Your professional CCTV surveillance dealer:



WES AUSTRALASIA

Ph: (02) 9797 9866 **Fax:** (02) 9716 6015

Address: 138 Liverpool Rd, Ashfield, 2131

Email: sales@wes.net.au