

### PARAMETERS

Impedance	8 ohms
Re	6.6 ohms
Le	0.15 mH @ 1 kHz
Fs	1,607 Hz
Qms	1.86
Qes	N/A
Qts	1.78
Mms	N/A
Cms	N/A
Sd	32.4 cm <sup>2</sup>
Vd	N/A
BL	N/A
Vas	N/A
Xmax	N/A
VC Diameter	N/A
SPL	94 dB @ 1W/1m
RMS Power Handling	80 watts
Usable Frequency Range (Hz)	2,000 - 26,000 Hz

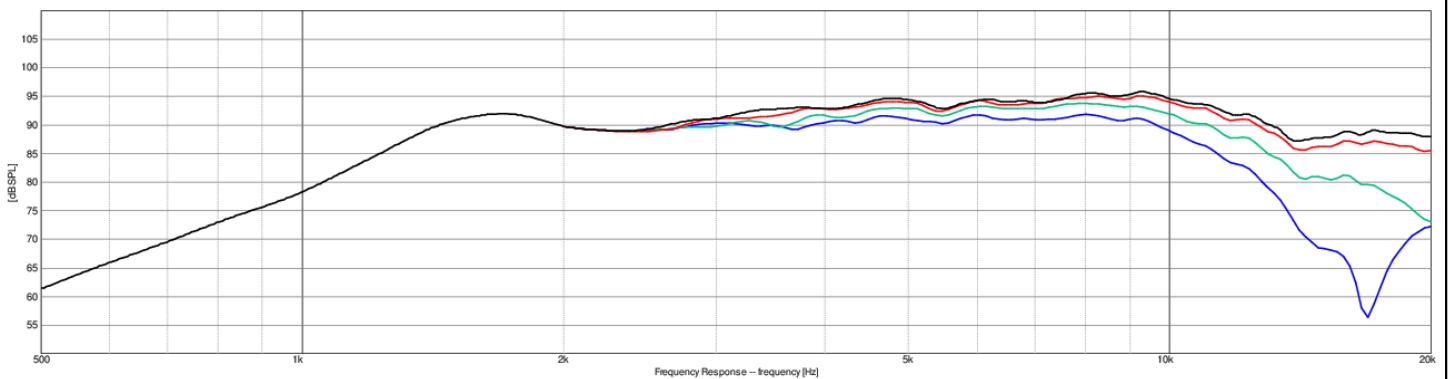
### FEATURES

- Superb resolution and detail for the most discerning audiophile
- Wide horizontal and narrow vertical dispersion patterns
- Perfect for use in line arrays
- 3 kHz recommended crossover frequency at 12 dB per octave

### IMPEDANCE/PHASE



### FREQUENCY RESPONSE



**Note:** 1/24<sup>th</sup> octave smoothing - nearfield response included in graph below 450 Hz.

Black = 0°  
Red = 15°  
Green = 30°  
Blue = 45°