



250W SUBWOOFER PLATE AMPLIFIER with DSP

Model: SPA250DSP
User Manual

Safety

1. Read these instructions.
2. Keep these instructions.
3. Heed all warnings.
4. Follow all instructions.
5. Do not use this apparatus near water.
6. Clean only with dry cloth.
7. Do not block any ventilation openings. Install in accordance with the manufacturer's instructions.
8. Do not install near any heat sources such as radiators, heat registers, stoves, or other apparatus (including amplifiers) that produce heat.
9. Do not defeat the safety purpose of any polarized or grounding-type plug. A polarized plug has two blades with one wider than the other. A grounding type plug has two prongs and a third grounding point. The wide blade or the third prong are provided for your safety. If the provided plug does not fit into your outlet, consult an electrician for replacement of the obsolete outlet.
10. Protect the power cord from being walked on or pinched particularly at plugs, convenience receptacles, and the point where they exit from the apparatus.
11. Only use attachments/accessories specified by the manufacturer.
12. Use only with the cart, stand, tripod, bracket, or table specified by the manufacturer, or sold with the apparatus. When a cart is used, use caution when moving the cart/apparatus combination to avoid injury from tip-over.
13. Unplug this apparatus during lightning storms or when unused for long periods of time.
14. Refer all servicing to qualified service personnel. Servicing is required when the apparatus has been damaged in any way, such as power-supply cord or plug is damaged, liquid has been spilled or objects have fallen into the apparatus, the apparatus has been exposed to rain or moisture, does not operate normally, or has been dropped.
15. **WARNING:** To reduce the risk of fire or electric shock, this apparatus should not be exposed to rain or moisture and objects filled with liquids, such as vases, should not be placed on this apparatus.
16. To completely disconnect this equipment from the mains, disconnect the power supply cord plug from the receptacle.
17. The mains plug of the power supply cord shall remain readily operable.

IMPORTANT SAFETY INSTRUCTIONS

To reduce the risk of electric shock, do not remove cover. No user serviceable parts inside. Refer servicing to qualified personnel. To reduce the risk of fire and shock do not expose unit to rain or moisture. The unit should be connected to an earth grounded AC electrical socket. The unit should be operated in a well ventilated area. Minimum clearance is 2 inches from the ventilation openings.

Note: Unit is set at the factory for 120V operation. Be sure to change the fuse

(2A rating) before switching to 230V operation.



FCC Statement

1. This device complies with Part 15 of the FCC Rules.

Operation is subject to the following two conditions:

(1) This device may not cause harmful interference, and

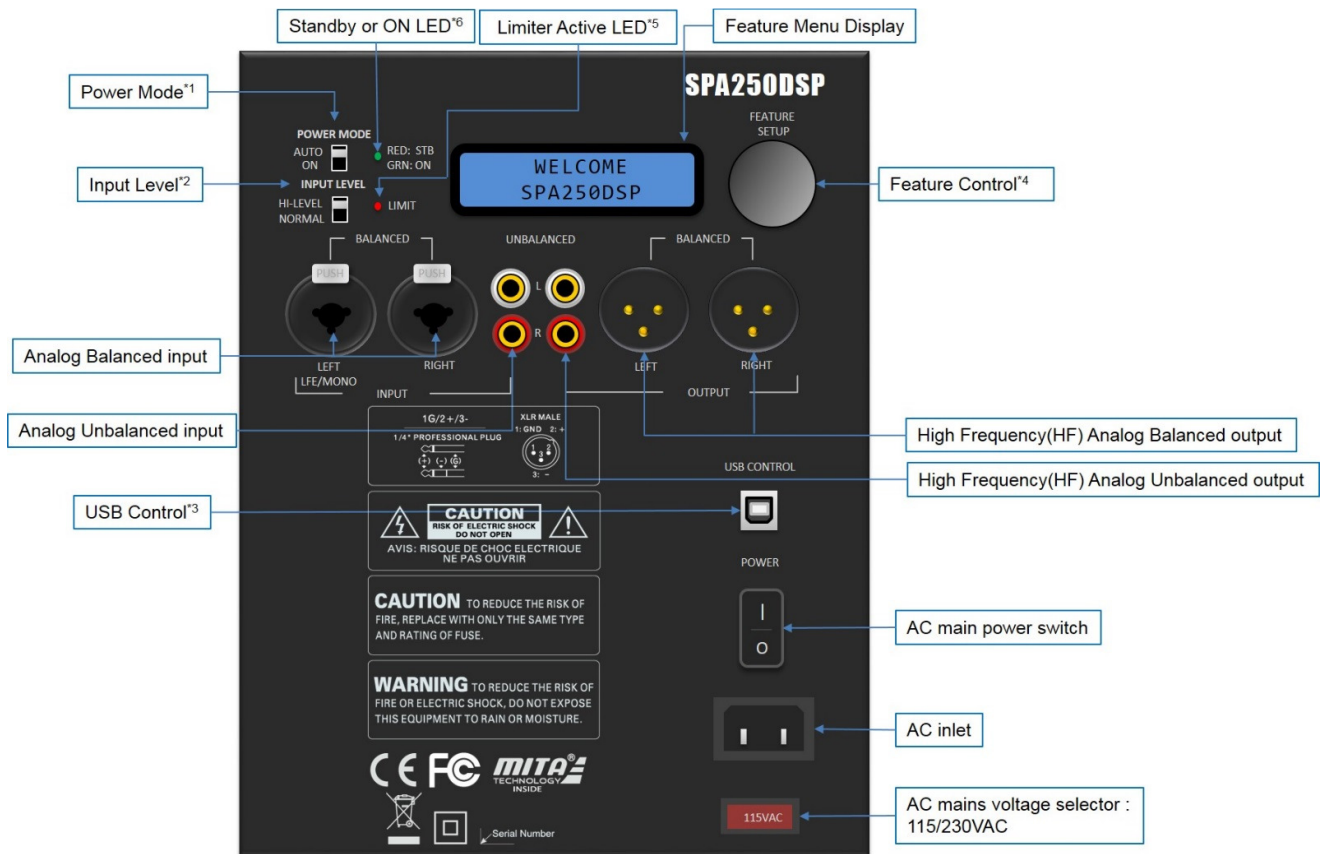
(2) This device must accept any interference received, including interference that may cause undesired operation.

Operating Guide: Dayton Audio SPA250DSP Subwoofer Power Amplifiers

Table of Contents

Back panel and input/output (I/O) definition.....	5
SPA250DSP wiring	6
Amp system block diagram.....	7
DSP processing block diagram	7
Controlling your subwoofer via PC GUI	8
Volume/Phase.....	9
LPF and Subsonic.....	10
5-Band PEQ	11
Limiter.....	12
High Frequency Out.....	13
Feature Menu display	14-15
Firmware update guide.....	16-20
DSP Functions.....	21
Feature Controller (LCD matrix, single-knob)	21
Advanced Control (for GUI via USB port, PC)	21
Base Specifications (Audio Precision®)	22

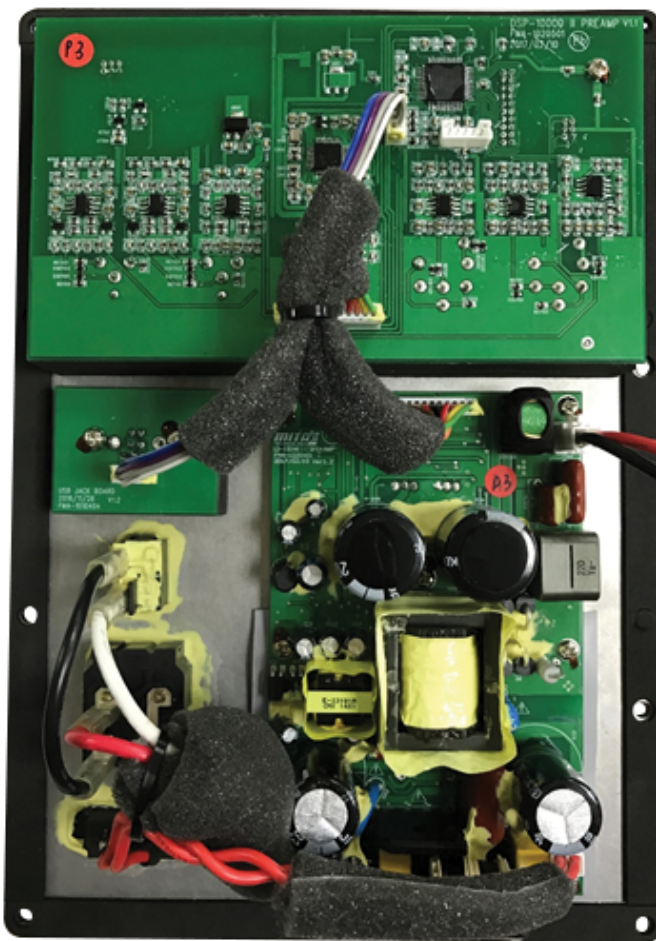
Back panel and input/output definition



- 1. Power Mode:** Select the either energy-saving or “always-on” power mode
 - o **Auto:** Amp goes into standby after no detected signal input for 20 minutes*
 - o **On:** Amp is always on, regardless of input signal status.

* Amp will automatically turn on typically in one second or less once audio signals are resumed.
- 2. Analog input attenuation:** Affects analog balanced and unbalanced inputs only.
 - o **Normal:** No attenuation.
 - o **Hi:** Attenuates input signal by -6dB.
- 3. USB Control:** Used for PC-GUI communication with custom PC software included with your amp. Please refer to **PC-GUI user guide** on [Page 8](#). USB also allows for **firmware update** by Dayton Audio release. See [Page 16](#) for more on the system “flash” update process.
- 4. Feature Control:** Single knob digital actuator with single/double-click enabled with rotary scrolling to navigate the amp’s extensive feature menu.
- 5. Limiter LED:** Lit when Limiter is active (Red).
- 6. Standby/On LED:**
 - o Red when amp is in energy saving “stand by” state.
 - o Green when amp is operating normally.

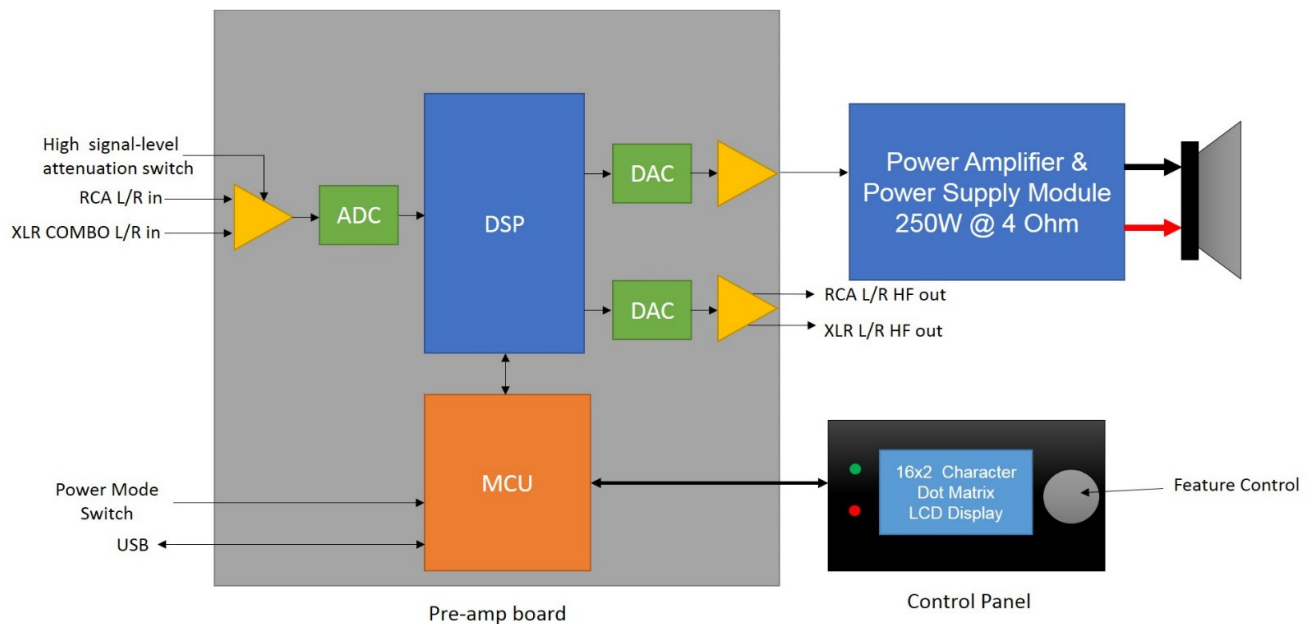
SPA250DSP wiring



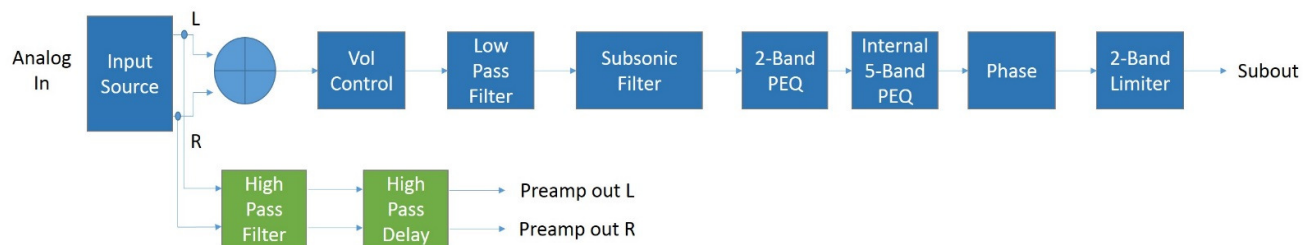
Connect to speaker driver (+)

Connect to speaker driver (-)

Amp system block diagram

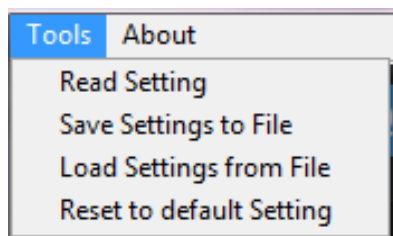


DSP processing block diagram



Controlling your subwoofer via PC GUI

The PC GUI (literally “Personal Computer, Graphical User Interface”) is the primary mode to access and adjust the DSP for subwoofer optimization. Follow all safe practices and contact Dayton Audio if you require assistance.



Read Setting: Read all the setting from amp

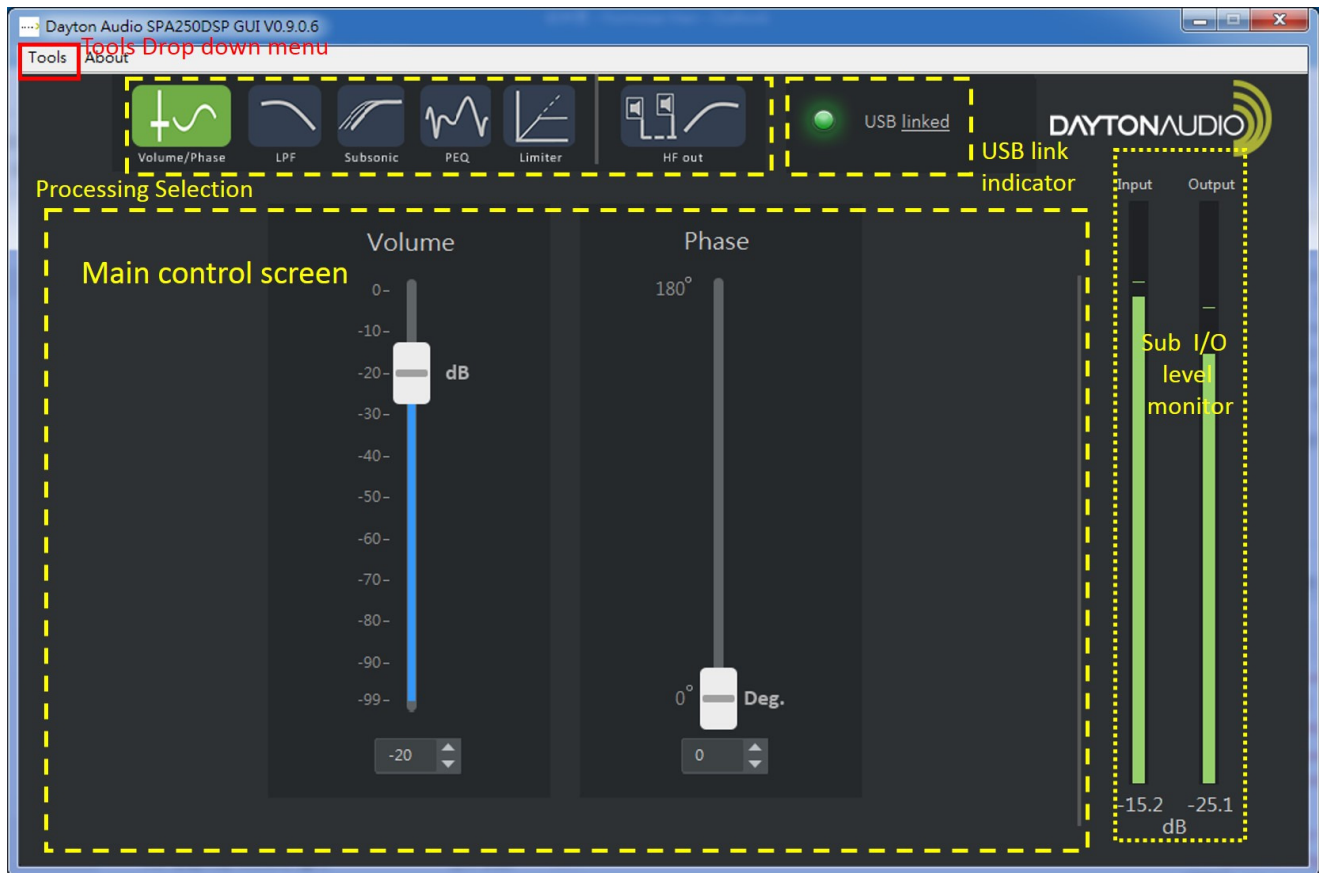
Save Settings to File: Save current settings to PC



Load Settings from File: Load previous saved setting to AMP

Reset to default setting: Reset the AMP to factory default

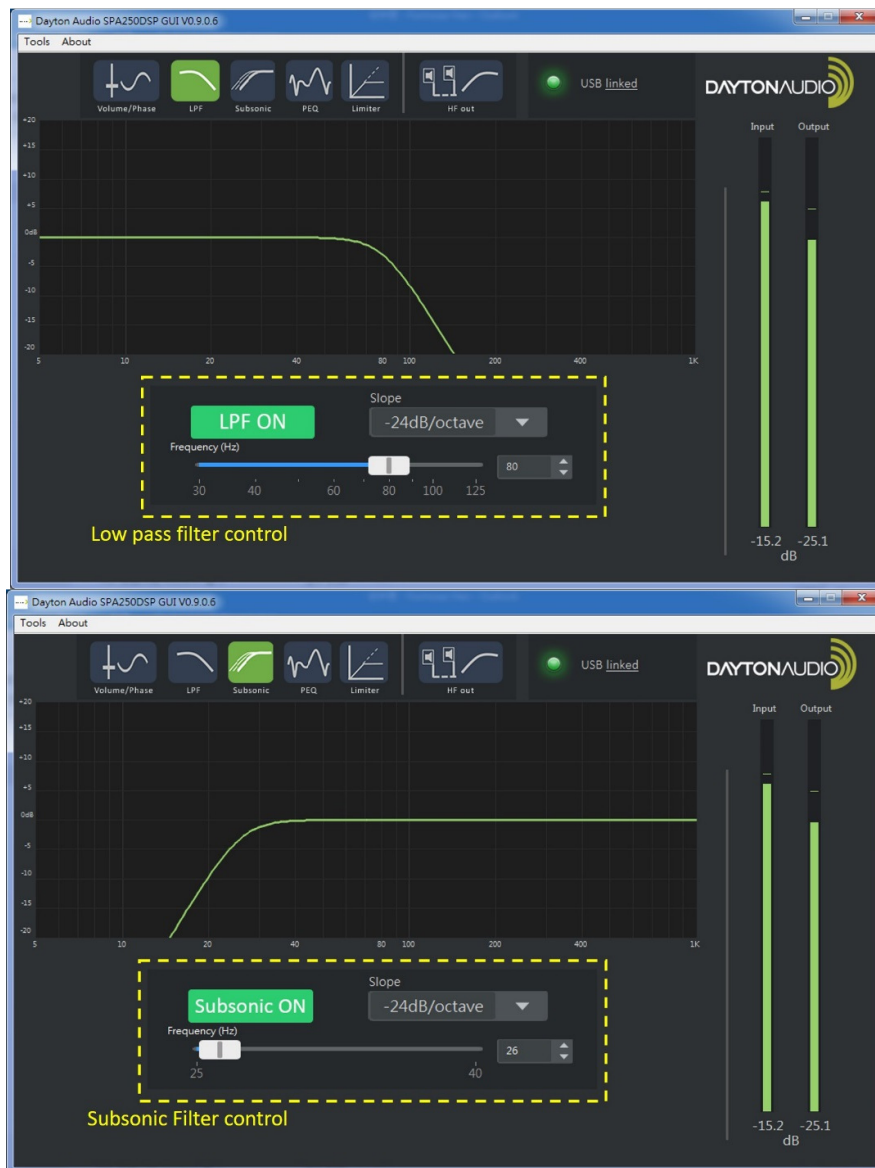
See next page: For a full depiction of the primary screens and detailed identification of each of your amp GUI's controls.

Volume/Phase



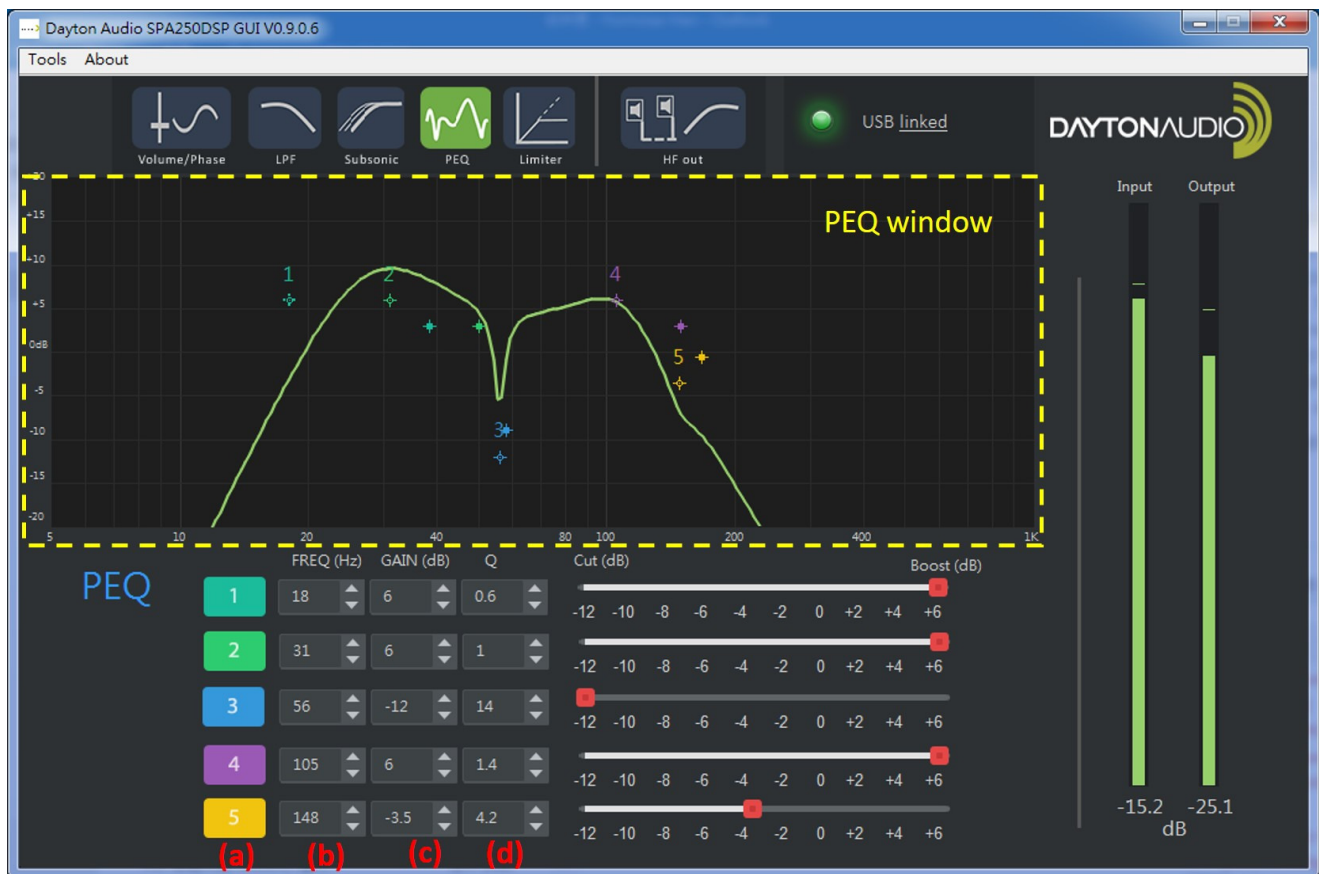
- **USB link indicator:**  [USB linked](#) When the communication via USB with amp is successful, the GUI's LED indicator will light green. Otherwise, "LED" stays red.  [USB disconnected](#)
- **Processing Selection:** Navigate across the DSP menu to adjust various DSP parameters.
- **Sub in/out monitor:** Monitor the **input signal** and **sub output signal levels**.
- **Tools Drop Down Menu:** Utilities for amp DSP management.

LPF and Subsonic



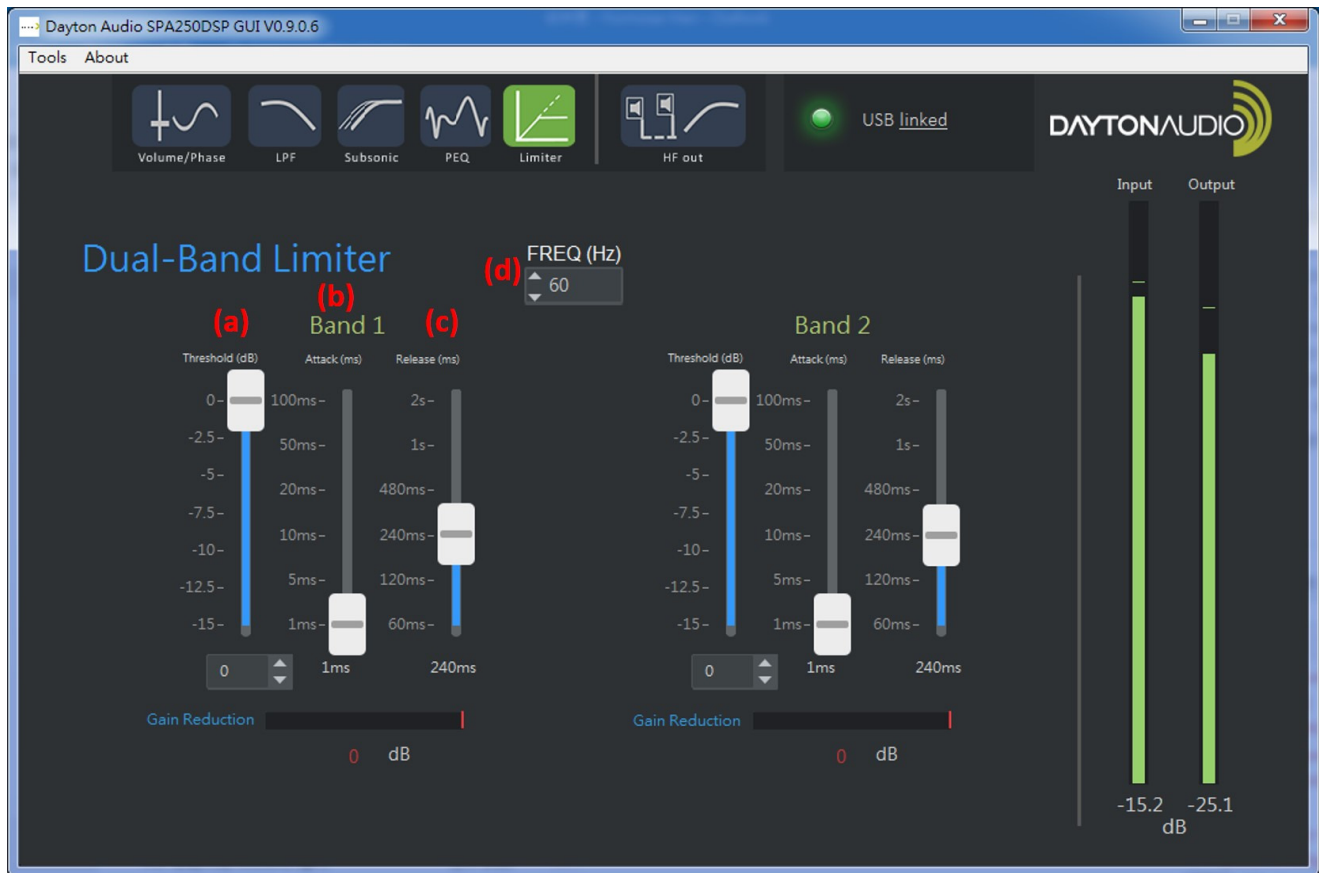
- **Filter ON/OFF Button:** Enable or disable the selected filter.
- **Slope:** Select roll-off gradient of the selected filter: -12dB/-24dB per octave.
- **Frequency (Hz):** Adjust cut-off frequency of the selected filter.

5-Band PEQ



- **PEQ Window:** Graphical trace is NRT editable. Bands can be shaped by cursor or direct input and/or sliders
- **Detailed tool tips (shown a-d above):**
 - **5 Band-digital PEQ**
 - a) Band On/Off:** Bypass or enable by clicking the colorized 1~5 buttons
 - b) Center Frequency (CF):** Adjust Center Frequency of each EQ band, 10~200Hz, steps: 1Hz.
 - c) Gain:** Adjust the EQ gain (apparent volume), -12 ~ +6dB, steps: 0.1dB
 - d) Q (EQ width):** Adjust the "Q" value, 0.4~16 , step: 0.1

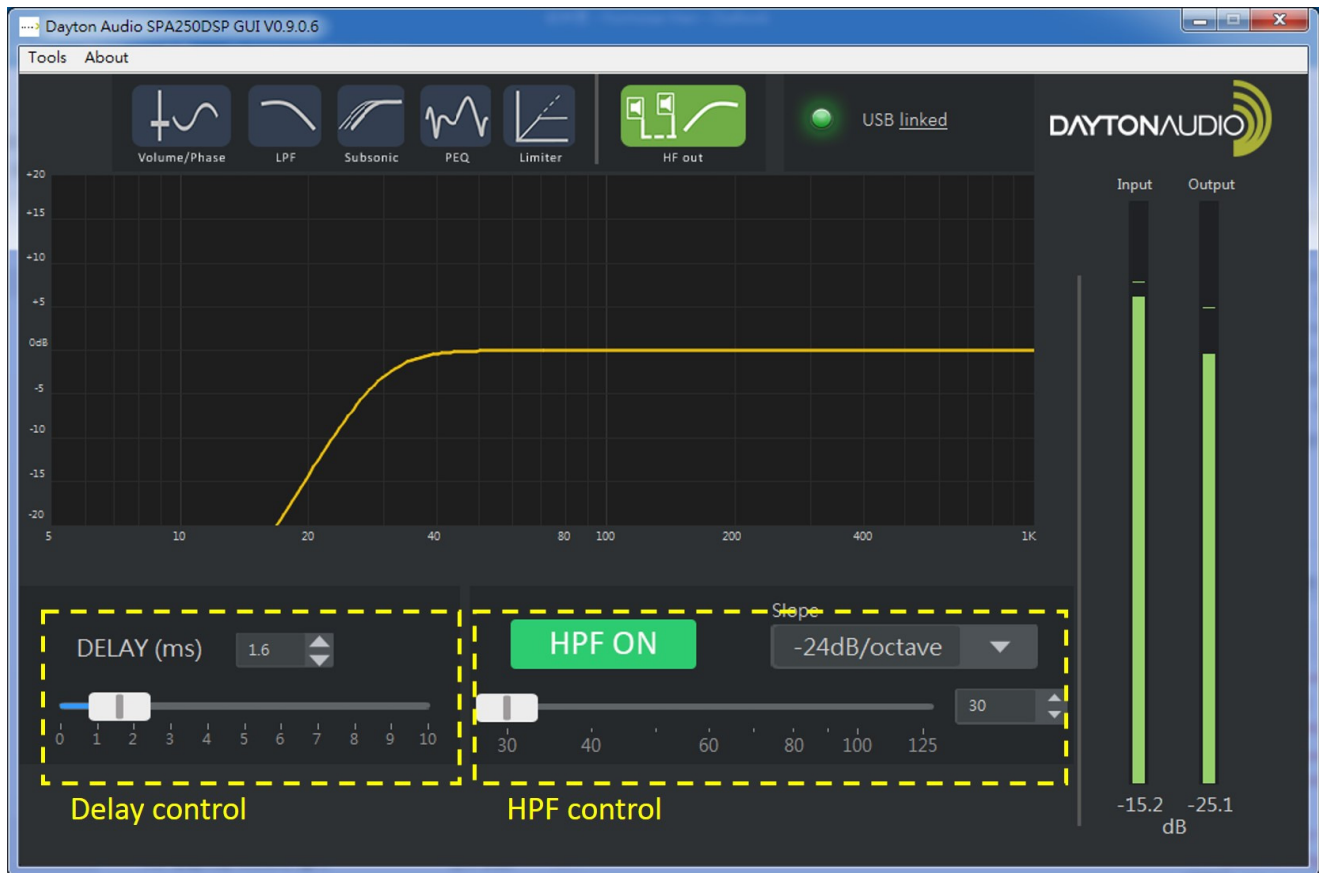
Limiter



Dual-Band Limiter: Adjust, optimize, save, recall.

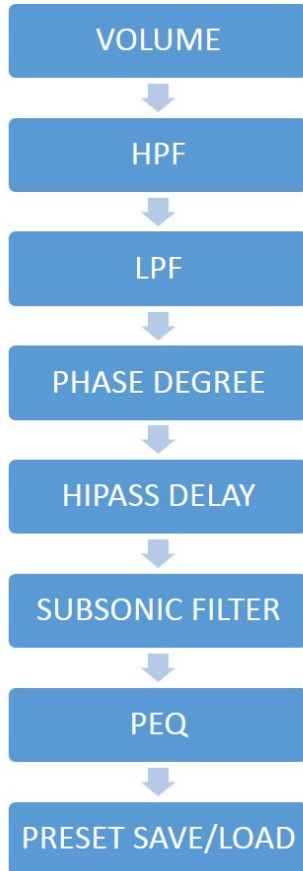
- a) **Threshold:** Adjust the limiter threshold, 0~-12dB, step: 0.1dB
- b) **Attack:** Adjust limiter's "attack time". This controls the time taken to attenuate signals over the threshold to the specified threshold level. Range: 1/5/10/20/100ms
- c) **Release:** Adjust limiter's "release time". When signal is below threshold level, this controls the time taken to restore back to original level. Range: 60/120/240/480/1000/2000ms
- d) **Frequency:** The crossover frequency point between the 2 bands: Band 1 (Low Frequency) & Band 2 (High Frequency).

High Frequency Out



- This block controls the DSP parameters for line level output only.
- **Delay:** Adjust the time difference between High Frequency out and Subwoofer out.
- **HPF Control:**
 - **Filter ON/OFF:** Bypass or Enable the selected filter.
 - **Slope:** Select roll-off gradient of the selected filter: -12dB/-24dB per octave.
 - **Frequency:** Adjust cut-off frequency of the selected filter.

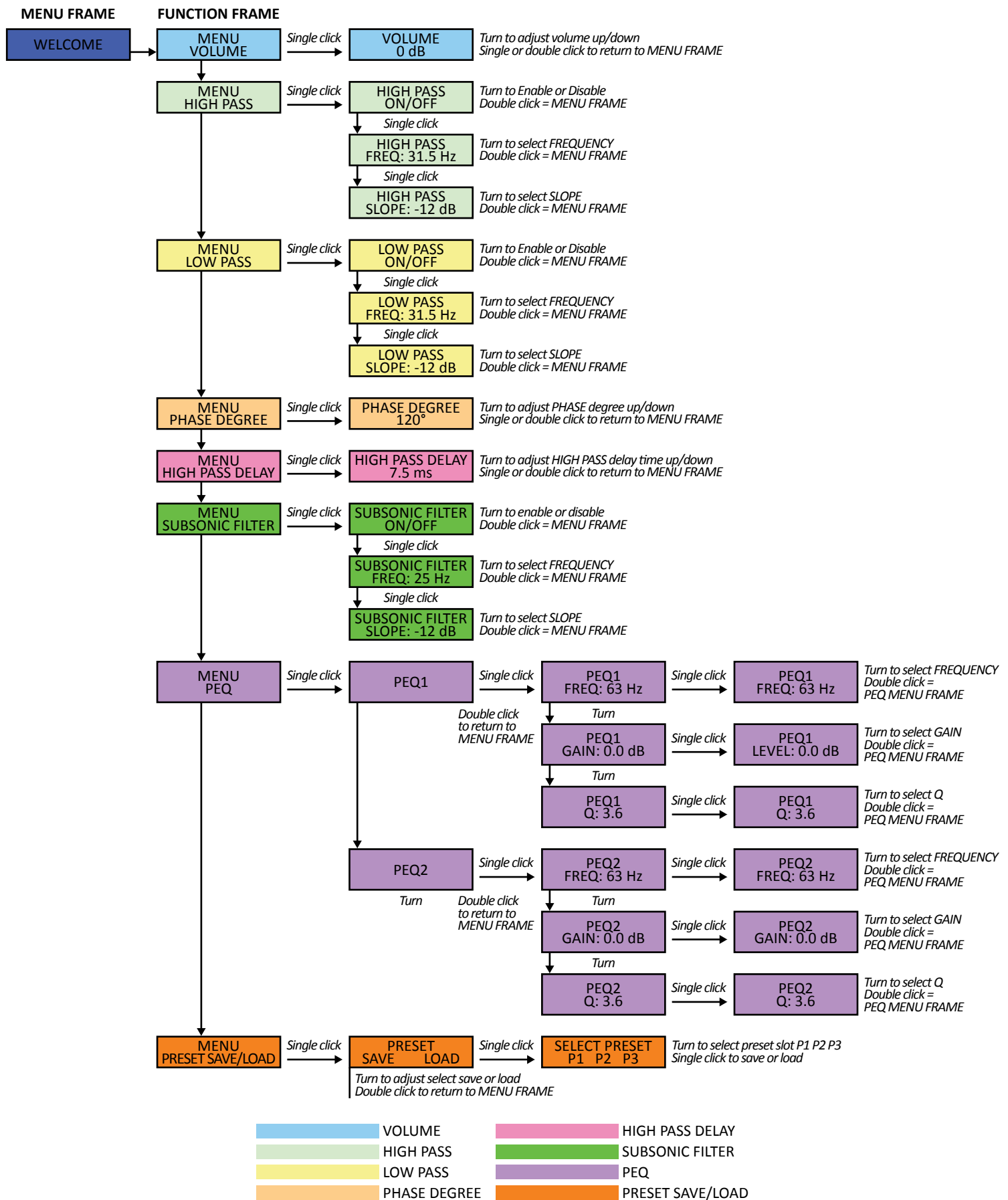
Feature Menu display



Volume, Phase, Low-Pass Filters, and all other controls are also accessible via the included rotary control.

Volume (shown above) is selected by a single click, upon which simple rotation allows 0.1dB adjustment. A “double-click” brings you back to the main menu. Subsequent rotation of the controller from the main menu navigates you through a series of setup menus.

Each of the “Function frames” at left correspond to the major feature controls on the amp. Each feature control uses the same single/double-click navigation. Note all detailed sub-features on the next page. Scroll around your amp and get familiar with its simple click and double-click feature rotation.



DSP Functions

Feature Controller (LCD matrix, single-knob)

1. **Volume Range:** 0dB ~ -99dB.(0.1dB/step)
2. **High pass Filter:** (line level output only)
 - **Frequency Range:** 30~125Hz (1Hz/step)
 - **Slope select:** Disabled/-12dB/-24dB
3. **High Pass Delay:** 0~10msec(0.1msec/step)
4. **Low pass Filter:** (subwoofer amp output only)
 - **Frequency Range:** 30~125Hz (1Hz/step)
 - **Slope select:** Disabled/-12dB/-24dB
5. **Variable Phase:** 0° ~ 180°(1°/step)
6. **Subsonic Filter:** (subwoofer amp output only)
 - **Frequency Range:** 25~40Hz (1Hz/step)
 - **Slope select:** Disabled/-12dB/-24dB
7. **P-EQ1/P-EQ2 adjustment:** (subwoofer amp output only)
 - **Frequency Range:** 30~125Hz (1Hz/step)
 - **Level Range:** -12dB ~ +6dB (0.1dB/step)
 - **Q Factor Range:** 0.6~14 (0.1/step)
8. **Preset Save/Load:** 3 Presets

Advanced Control (for GUI via USB port, PC)

1. **I/O level meter (0 ~ -99dB)**
2. **5-Band Parametric EQ Settings**
 - **Frequency Range:** 10~200Hz (1Hz/step)
 - **Level Range:** -12dB ~ +6dB (0.1dB/step)
 - **Q Factor Range:** 0.6~14 (0.1/step)
3. **Limiter**
 - **Threshold Range:** -15dB ~ 0dB (0.1dB/step)
 - **Attack Time Range:** 1/5/10/20/50/100ms
 - **Release Time Range:** 60/120/240/480/1000/2000ms

Base Specifications (Audio Precision®)

Parameters	Test conditions	Typical value
Input sensitivity	RCA IN 260W/4ohms @115VAC XLR IN 250W/4ohms @115VAC	-10dBV -10dBV
Gain	AMP output 100Hz @ 1W output	+40.2dB
Input saturation level	RCA left or right 100Hz XLR left or right 100Hz	>2V(Hi-Level IN) >2V(Hi-Level IN)
Noise Level	volume=0dB (MAX)@A weighted	-62.3dBV (S/N Ratio 97.9dB)
THD+N Ratio	20-20kHz Filter, Rated Power @100Hz	< 1%
Output power (4Ω)	100Hz@115VAC, Input: -10dBV (L+R)	250 W
Auto ON/OFF Auto ON sensitivity Auto OFF time	RCA Left ,100Hz	3mV 20mins
Time delay		2ms
Power amplifier Protection	A- Short-circuit and under load protection B- Thermal protection C-Power Supply Protection-Full Power Protection	A-Yes B-Yes C-Yes
Power Consumption:	@230Vac/60Hz A- Standby mode @230Vac/60Hz B- ON mode @230Vac/60Hz C- Rated power @115Vac/60Hz A- Standby mode @115Vac/60Hz B- ON mode @115Vac/60Hz C- Rated power	A- 0.50 W B- 7.50 W C- 311 W A- 0.42 W B- 7.50 W C- 319 W

SPA250DSP	
Weight:	1.1kG
Dimension:	262 (H) x 184 (W) x 60 (D) mm

WARRANTY COVERAGE

Dayton Audio products are warranted to be free of all defects in material and workmanship for 5 YEARS from the date of purchase from an authorized Dayton Audio dealer. This warranty and all rights provided are limited to the original owner and are non-transferable. Dayton Audio's responsibility is limited to replacement or repair as set forth in this warranty statement.

Should a product require warranty service during this period, Dayton Audio will repair or replace without charge, any part or product proving defective in material or workmanship. All warranty repairs and service must be performed by an authorized Dayton Audio technician or service facility. The use of non-authorized repair services renders this warranty null and void, and any charges relating to non-authorized repair are the responsibility of the product owner.

All expenses related to replacing or repairing a defective part or product under this warranty shall be assumed by Dayton Audio. Dayton Audio reserves the right to replace defective product with a new or factory reconditioned unit.

WARRANTY EXCLUSIONS

1. This warranty does not cover product failure or damage resulting from misuse, abuse, neglect, accidents, alterations, standard environmental deterioration, natural disasters, or improper use and/or installation.
2. This warranty does not cover cosmetic damage due to misuse or neglect. This includes paint damage, scratches, cracks or other superficial marks related to improper use.
3. Failures arising from attempted servicing of a non-authorized Dayton Audio repair facility or technician are excluded from this warranty.

LIMITATION OF DAMAGES

In no event shall Dayton Audio be liable for consequential damages for breach of this warranty including installation charges, excessive shipping expenses, property loss or other incidental loss. Some States do not allow the exclusion or limitation of incidental or consequential damages, so the above limitation or exclusion may not apply to the buyer.

HOW TO OBTAIN WARRANTY SERVICE

To obtain services under this warranty, the buyer shall contact Dayton Audio's authorized service provider, Parts Express, at 1-800-338-0531 x 780 to obtain a return authorization number (RA#).

The buyer must carefully pack the warranted product along with a copy of the original purchase receipt, the return authorization number (RA#), and a description to the repair facility listed below. Shipping for warranty service is dependent upon the return policy where the Dayton Audio product was purchased.

Parts Express

Attn: Dayton Audio Warranty Repairs RA# (please write your RA# here)

705 Pleasant Valley Drive
Springboro, Ohio 45066

NOTICE TO BUYER

This warranty gives you specific legal rights, and you may also have other rights which vary from state to state.



daytonaudio.com
tel + 937.743.8248
info@daytonaudio.com

705 Pleasant Valley Dr.
Springboro, OH 45066
USA

