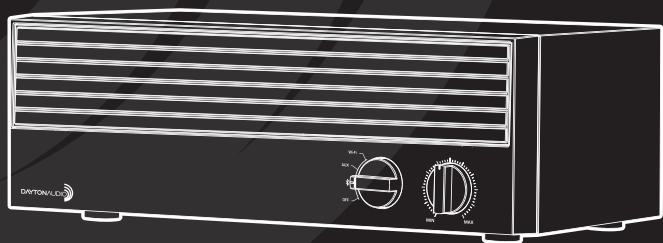




BLUETOOTH / Wi-Fi SPEAKER

Model: MARK2-WF User Manual

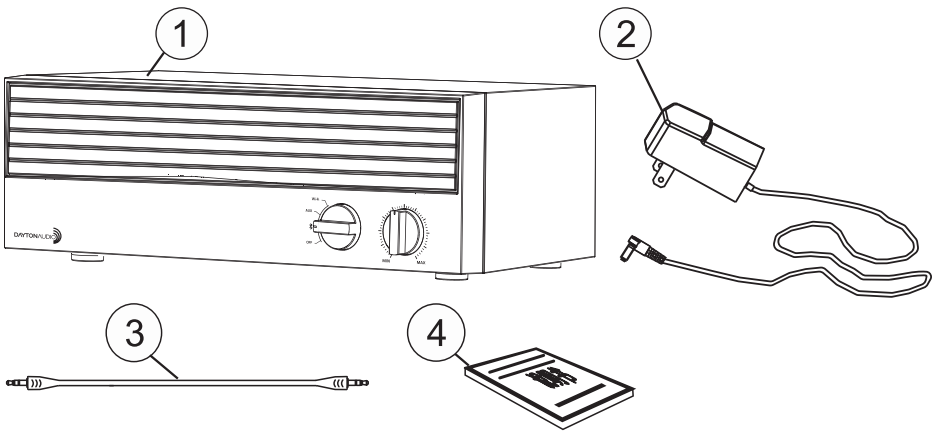


Please read this guide carefully before using this product.

SAFETY INSTRUCTIONS:

- To prevent fire or electrical hazard do not disassemble this product.
- Do not expose the unit to water or moisture.
- Do not place liquid on or close to unit.
- Do not place unit on or near an open flame or heat source.
- Keep product free from dust and debris.
- Place unit on a stable and level platform.
- Do not place heavy items on top of unit.
- Do not use excessive force when pushing the unit buttons.
- Do not attempt to pull the power cord when removing it from power outlet.
- Do not use damaged or defective power cables.
- Unplug the power cable if the unit is not in use.
- Clean with a damp cloth only.

PACKAGE CONTENTS



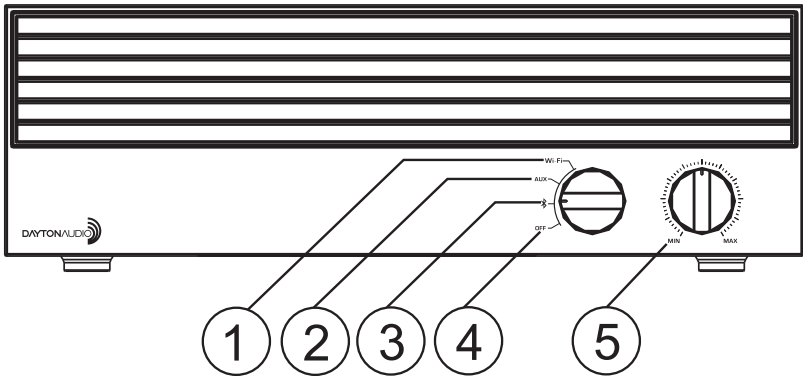
1. MARK 2-WF speaker
2. Power adapter
3. Audio cable
4. User manual

CONTROL PANELS

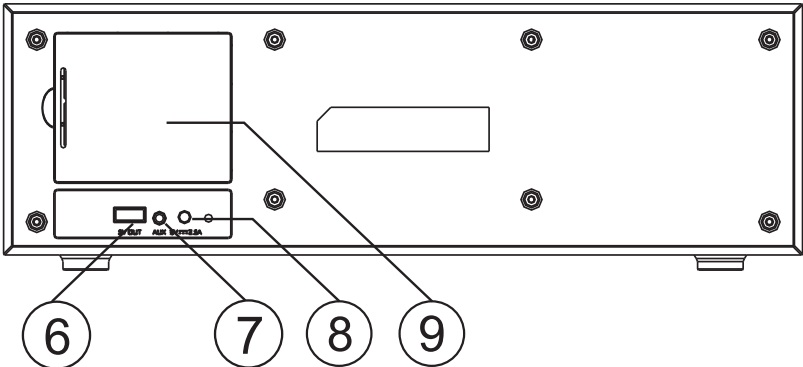
- | | |
|--------------------------|---|
| 1. Wi-Fi mode | 8. DC Input, 9VDC / 2.5A |
| 2. AUX mode | 9. Battery Access Door (Not used on MARK2-WF) |
| 3. Bluetooth | 10. Play/Pause/Phone |
| 4. Power Off | 11. Bluetooth Pairing Button |
| 5. Volume Control | 12. NFC Icon |
| 6. USB Power Port 5V, 1A | 13. Directional buttons |
| 7. AUX Input | |

CONTROL PANELS

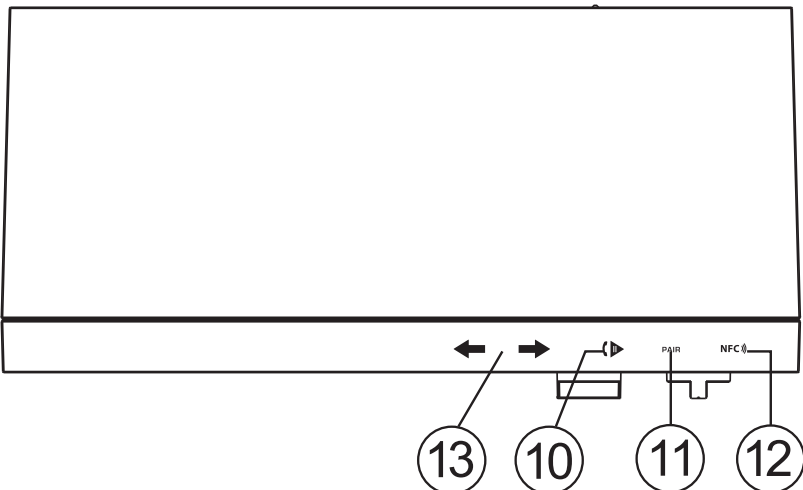
FRONT PANEL



BACK PANEL



TOP PANEL



SPEAKER OPERATION

1. Bluetooth Mode:

Rotate the front function knob to select the Bluetooth icon, the voice prompt will announce “Bluetooth mode”. If you are pairing for the first time press the pair button on the top of the speaker and make sure your mobile device is in pairing mode. Select the MARK2-WF speaker from your devices Bluetooth list. If the connection is successful the voice prompt will announce “paired”, you can now play music using your mobile device.

2. NFC Mode:

Rotate the front function knob to select the Bluetooth icon, the voice prompt will announce “Bluetooth mode”. Make sure the mobile device has NFC communication, the screen is unlocked and the feature is active. Place your mobile device NFC close to speaker NFC for a few seconds, your mobile device should display the option to connect to the MARK2-WF speaker. Press “yes” to connect, you can now move the mobile device away from the speaker. Once the mobile device has paired the voice prompt will announce “paired”, you can now play music using your mobile device.

3. Operation Controls in Bluetooth Mode:

Using the touch sensitive control buttons on the top of the speaker you can play, pause, answer the phone or select song using the top operation control panel.

4. AUX IN Mode:

Make sure the front function knob is in the off position; then connect the speaker to your audio device using the supplied 3.5mm Aux cable. Turn the rotary knob to AUX mode function icon. The voice prompt will announce “Aux In Mode”, the speaker is ready to play music from your connected device.

5. Operation Controls in Aux Mode:

Once the speaker connected the audio device, using PLAY/PAUSE button on the top of the speaker you can mute the speaker or unmute the speaker. The flashing light on the function knob indicates the speaker is muted.

6. Wi-Fi Mode:

Turn the function knob to select the Wi-Fi function icon. You will hear 4 chimes when Wi-Fi system is ready for use.

7. Android connection through Wi-Fi:

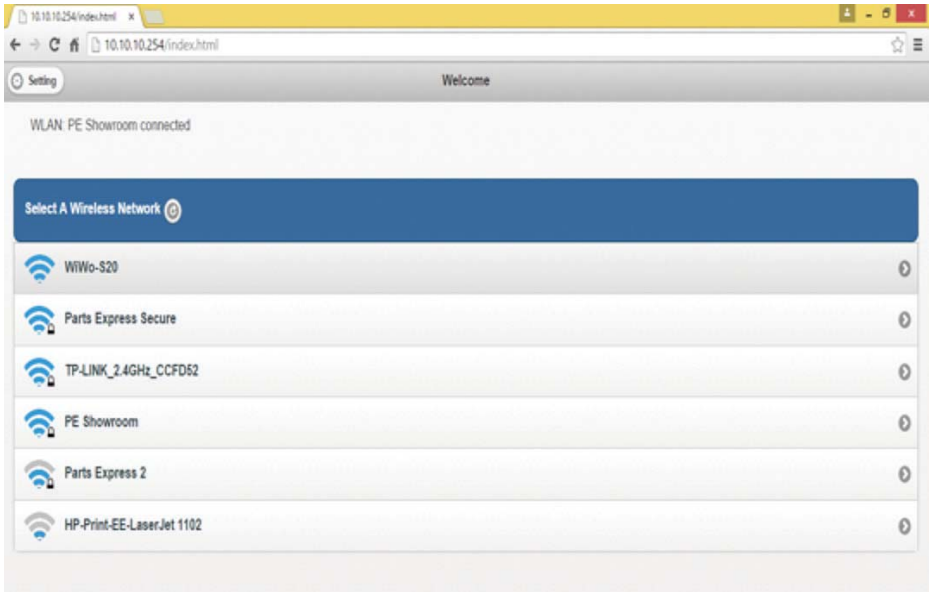
Android system: Android 2.3 version or above. The speaker supports DLNA protocol or third-party app that will support the DLNA protocol. Enter settings menu of mobile, touch WLAN and select the MARK2-WF speaker to connect to Wi-Fi. Turn on the mobile device music app and choose the local music. Locate the DLNA symbol on the music app page and select the MARK2-WF as the audio device.

8. IOS connection through Wi-Fi:

iOS system: iOS 4.2 version or above. Enter setting menu of mobile device, choose the Wi-Fi setup and select the MARK2-WF to connect through Wi-Fi. Turn on the mobile device music app and choose the local music. Locate the Airplay symbol on the music app page, and select the MARK2-WF as the audio device.

9. Wi-Fi connection through WLAN:

Enter your settings menu of mobile device, choose the Wi-Fi setup and select the MARK2-WF to connect using Wi-Fi. Once the MARK2-WF is connected via Wi-Fi open your mobile device browser. Input the IP address 10.10.10.254 to access the web setup menu of the MARK2-WF. Select the wifi tab and choose your Wi-Fi network to connect. If your Wi-Fi network is password protected you will be prompted to enter the network password. After the MARK2-WF is connected to your network make sure your mobile device is also connected to the same Wi-Fi network.



10. USB Power Output:

The speaker has the USB port for providing DC5V 1A output. This can be used to power or charge your mobile device.

11. Multiroom Audio:

Use the "Hi-Fly" app for multiroom audio.

TROUBLESHOOTING/NOTES

- If the Speaker can't be found in Bluetooth mode the speaker could be connected to another device. Remove the device from any other devices and try again. If you still can't find the Bluetooth speaker, please turn off the speaker for 5 second then turn it back on.
- Bluetooth signal is intermittent: the effective distance between speaker and device is 30 feet, the signal will be intermittent if the distance between the device and speaker is more than 30 feet.
- If your Bluetooth device is in search mode it may find many other Bluetooth devices, please wait until the search is finished and select the MARK2-WF speaker to pair.
- Don't hold the mobile device too close to the speaker when using the phone function to avoid echo.
- NFC: please make sure the mobile has NFC function and it is turned on in the device.
- Please remove the mobile device case if you cannot connect to NFC.
- The mobile device can't access internet while playing music in a direct connection through the Wi-Fi of the mobile device and the speaker.
- The speaker's Wi-Fi security password is turned off by default. Enter the web setting menu to set up the speaker's Wi-Fi security password.
- The Wi-Fi SSID of the speaker is default MARK2-WF-xxxx. You can change the Wi-Fi SSID by logging into the web settings menu.
- If the Wi-Fi signal is weak, the music playback will become choppy or intermittent.
- If the Bluetooth connection has failed several times, turn the control knob to the OFF position; wait for 3 minutes before you restart the speaker.
- When speaker is not in use, turn the control knob to the OFF position.

SPECIFICATIONS

CONNECTIVITY:

Bluetooth
NFC
AUX 3.5mm Stereo
Wi-Fi 2.4 Ghz

BLUETOOTH:

Blue tooth range : 7-10M (22-33 ft.)
Bluetooth version : 2.1 + EDR

POWER:

Power voltage: AC100-240V, 50/60Hz / DC 9V, 2.5A
Amplifier output power: 5W (RMS) x2 3 Ω + 10W (RMS) x1 2 Ω
Amplifier input sensitivity: \leq 500mV
Amplifier SNR: \geq 75dB
THD: \leq 1%

FREQUENCY RESPONSE:

50Hz~20KHz

SPEAKER DRIVER UNITS:

Tweeter 1" (25.4mm) x 2 Silk dome tweeter
Midrange 2" (50.8mm) x 2 Paper Cone, Ferrite magnet
Subwoofer 3.5" (88.9mm) x 1 Paper cone, Ferrite magnet
Passive radiator 162 x 62mm x 1

DIMENSIONS:

350mm (W) x 117mm (H) x 160mm (D)

COLOR:

Black

Warranty Information

Dayton Audio products are warranted free from defects in material and workmanship for **5 years** from date of purchase (see exceptions below). In the rare case of a product failure, please contact your place of purchase or call our Customer Support Department at (937) 743-8248.

Warranty Limitations

There are no other warranties, either express or implied, that extend the foregoing, and there are no warranties of merchantability or fitness for any particular purpose. Dayton Audio is not responsible for any consequential or inconsequential damage to any other unit or component or the cost for installation or extraction of any component of the audio system, or for the improper use of products. This includes but is not limited to burnt voice coils, overheating, bent frames, holes in the cone, or broken lead wires. Warranty does not apply to misuse, abuse, neglect, accident, improper use, etc. Dayton Audio reserves the right to repair or replace the products with either a new or factory refurbished unit.

Exception: Dayton Audio HDMI Cables -- No registration, no questions asked LIFETIME warranty. Replacement of Dayton Audio HDMI cables is with equal or better quality HDMI cables. Unassembled Kits - A 45-day return policy applies to unassembled kits. Once assembly has been started or completed, kits are deemed used and are nonreturnable for refund/exchange. This does not limit the manufacturers' warranty policies on any kit component.

This warranty gives you specific legal rights and you may also have other rights that vary from state to state.

Non-Warranty Service: If non-warranty service is required, the product may be sent to the Company for repair/replacement, transportation prepaid, by calling (937) 743-8248 for details, complete instructions, and service fee charges.



daytonaudio.com
tel + 937.743.8248
info@daytonaudio.com

705 Pleasant Valley Dr.
Springboro, OH 45066
USA

