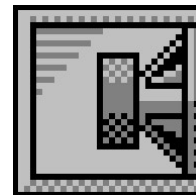


WES SW12 Passive

By RnD, Sinar Baja Electric



Box Properties

--Description--

Name: WES SW12 Passive

Type: Passive Radiator Box

Shape: Prism, square

--Box Parameters--

Vb = 45,36 liters

V(total) = 47,75 liters

F3 = 24,58 Hz

Fill = normal

--Passive Radiators--

No. of Passive Radiators = 2

Fs = 9,1 Hz

Qms = 11,7

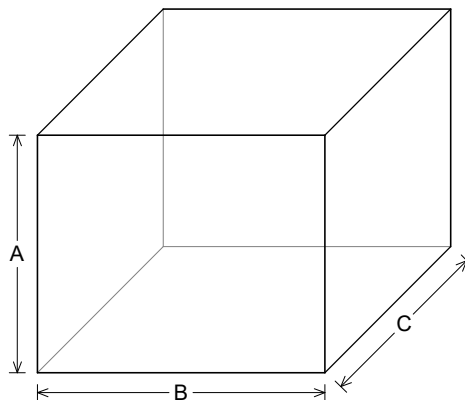
Vas = 183, liters

Cms = 0,5 mm/N

Mms = 615, g

Rms = 3, kg/s

Sd = 508, sq.cm



--External Dimensions--

A = 380, mm

B = 460, mm

C = 380, mm

--Internal Dimensions--

A = 338, mm

B = 418, mm

C = 338, mm

--Wall Thickness--

Front = 21, mm

Side = 21, mm

Driver Properties

--Description--

Name: 12in SB34SWPL76-4 rev 1

Type: Standard one-way driver

--Configuration--

No. of Drivers = 1

--Mechanical Parameters--

Fs = 17,9 Hz

Qms = 5,83

Vas = 86,8 liters

Cms = 0,3 mm/N

Mms = 262,2 g

Rms = 5, kg/s

Xmax = 18,4 mm

Xmech = 27,6 mm

P-Dia = 239,7 mm

Sd = 452,4 sq.cm

P-Vd = 0,83 liters

--Electrical Parameters--

Qes = 0,31

Re = 3,5 ohms

Z = 4, ohms

BL = 18,3 Tm

Pe = 500, watts

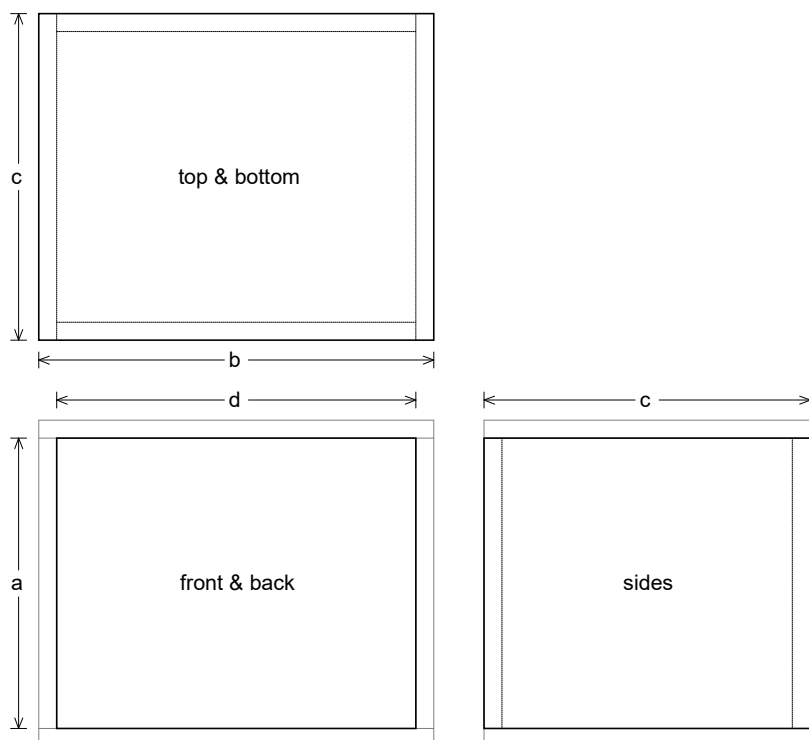
--Electromech. Parameters--

Qts = 0,29

no = 0,15 %

1-W SPL = 83,9 dB

2.83-V SPL = 87,5 dB



Box Parts

Box Shape: Square Prism

1 Top, 1 Bottom: depth (c) = 380, mm
width (b) = 460,, thickness = 21, mm

1 Front, 1 Back: height (a) = 338, mm
width (d) = 418,, thickness = 21, mm

2 Sides: height (a) = 338, mm
depth (c) = 380,, thickness = 21, mm

--Driver Mounting--
Mounting: Flush

