

AFTERMARKET AUTOMOTIVE

2017



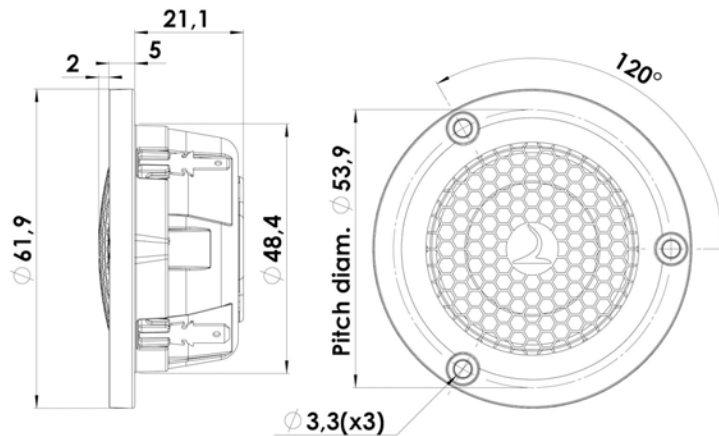
OUR PHILOSOPHY
IS SIMPLE:
THE EMITTED SOUND
MUST BE DYNAMIC,
GIVING A TRANSIENT
RESPONSE AND
PROVIDING
TONAL BALANCE.



TWEETER

D3004/604005

The GOLD SERIES are specially selected units from Scan-Speak's well-known home audio speakers. Which have been upgraded and optimized for automotive use. This series enables audiophiles to experience in their vehicle the - TRUE TO LIVE - that they enjoy from their high-end home audio system.



KEY FEATURES:

- 1" Beryllium Diaphragm (99% pure Be)
- High Power Patented SD-2 magnet system
- Die Cast Housing & Face Plate
- Large Roll Surround f. wide dispersion
- Compact Non Resonant Alu Rear Chamfer
- Sound Transparent Protective Grill

T-S Parameters

Resonance frequency [fs]	715 Hz
Mechanical Q factor [Qms]	2.25
Electrical Q factor [Qes]	1.00
Total Q factor [Qts]	0.69
Force factor [Bl]	2.4 Tm
Mechanical resistance [Rms]	0.89 kg/s
Moving mass [Mms]	0.35 g
Compliance [Cms]	0.11 mm/N
Effective diaph. diameter [D]	30 mm
Effective piston area [Sd]	7 cm ²
Equivalent volume [Vas]	0.01 l
Sensitivity (2.83V/1m)	92.0 dB
Ratio Bl/√Re	1.43 N/√W
Ratio fs/Qts	1036 Hz

Notes:

IEC specs. refer to IEC 60268-5 third edition.
All Scan-Speak products are RoHS compliant.
Data are subject to change without notice.
Datasheet updated: March 8, 2017.

Electrical Data

Nominal impedance [Zn]	4 Ω
Minimum impedance [Zmin]	3.6 Ω
Maximum impedance [Zo]	10.9 Ω
DC resistance [Re]	2.9 Ω
Voice coil inductance [Le]	0.03 mH

Power Handling

100h RMS noise test (IEC 17.1)*	50 W
Long-term max power (IEC 17.3)*	100 W

*Filter: 2. order HP Butterworth, 2,5kHz

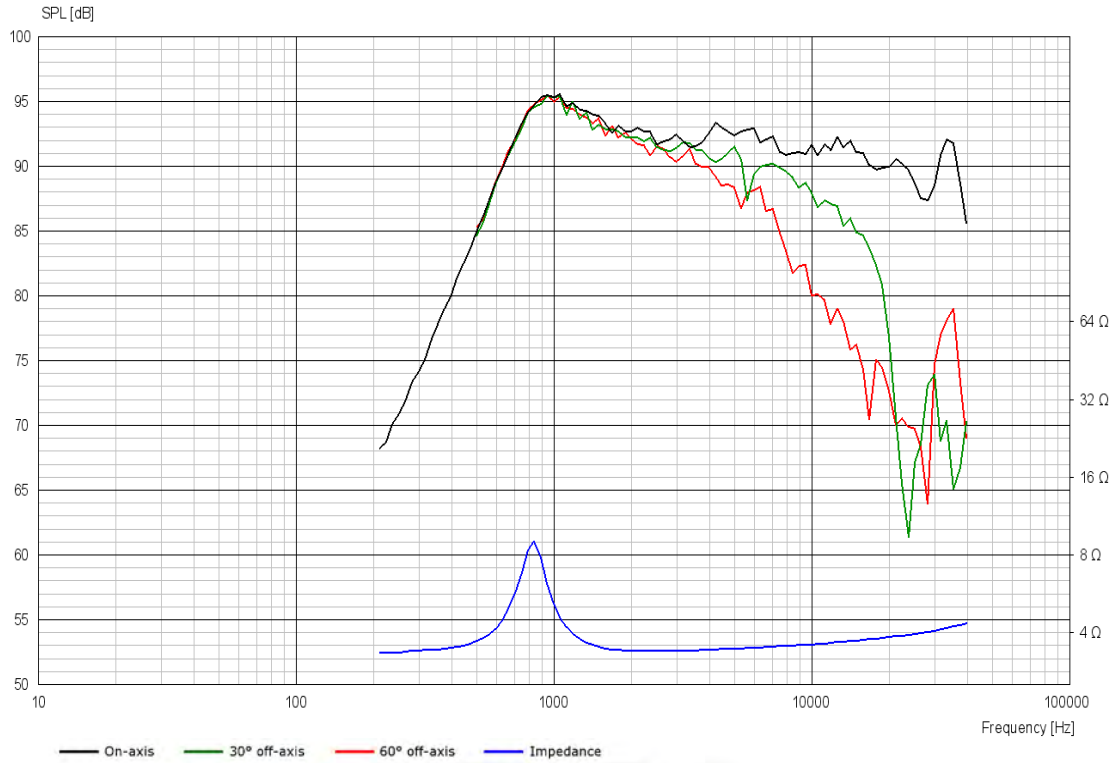
Voice Coil & Magnet Data

Voice coil diameter	26 mm
Voice coil height	2.0 mm
Voice coil layers	2
Height of gap	2.5 mm
Linear excursion	± 0.25 mm
Max mech. excursion	± 1.6 mm
Unit weight	0.15 kg

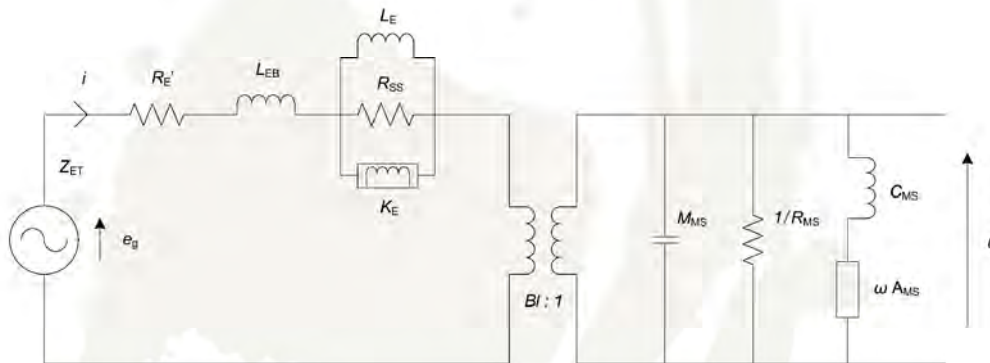


TWEETER

D3004/604005



Advanced Parameters (Preliminary)



Electrical data

Resistance [$R_{E'}$]	- Ω
Free inductance [L_{EB}]	- mH
Bound inductance [L_E]	- mH
Semi-inductance [K_E]	- SH
Shunt resistance [R_{SS}]	- Ω

Mechanical Data

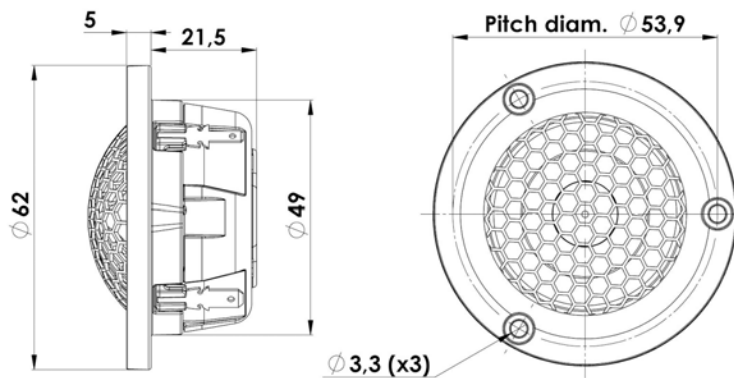
Force Factor [Bl]	- Tm
Moving mass [M_{MS}]	- g
Compliance [C_{MS}]	- mm/N
Mechanical resistance [R_{MS}]	- kg/s
Admittance [A_{MS}]	- mm/N



TWEETER

R3004/602005

The GOLD SERIES are specially selected units from Scan-Speak's well-known home audio speakers. Which have been upgraded and optimized for automotive use. This series enables audiophiles to experience in their vehicle the - TRUE TO LIVE - that they enjoy from their high-end home audio system.



KEY FEATURES:

- 1" Ring Dome Diaphragm
- High Power Patented SD-2 magnet system
- Non Resonant Alu Rear Chamber
- Patented Phase Plug Design
- Sound Transparent Protective Grill
- Die Cast Housing & Face Plate

T-S Parameters

Resonance frequency [fs]	630 Hz
Mechanical Q factor [Qms]	3.42
Electrical Q factor [Qes]	1.15
Total Q factor [Qts]	0.86
Force factor [Bl]	2.4 Tm
Mechanical resistance [Rms]	0.68 kg/s
Moving mass [Mms]	0.59 g
Compliance [Cms]	0.11 mm/N
Effective diaph. diameter [D]	27 mm
Effective piston area [Sd]	5.6 cm ²
Equivalent volume [Vas]	0.01 l
Sensitivity (2.83V/1m)	90 dB
Ratio Bl/√Re	1.39 N/√W
Ratio fs/Qts	733 Hz

Notes:

IEC specs. refer to IEC 60268-5 third edition.
All Scan-Speak products are RoHS compliant.
Data are subject to change without notice.
Datasheet updated: March 8, 2017.

Electrical Data

Nominal impedance [Zn]	4 Ω
Minimum impedance [Zmin]	3.8 Ω
Maximum impedance [Zo]	15.0 Ω
DC resistance [Re]	3 Ω
Voice coil inductance [Le]	0.02 mH

Power Handling

100h RMS noise test (IEC 17.1)*	50 W
Long-term max power (IEC 17.3)*	130 W

*Filter: 2. order HP Butterworth, 2.5 kHz

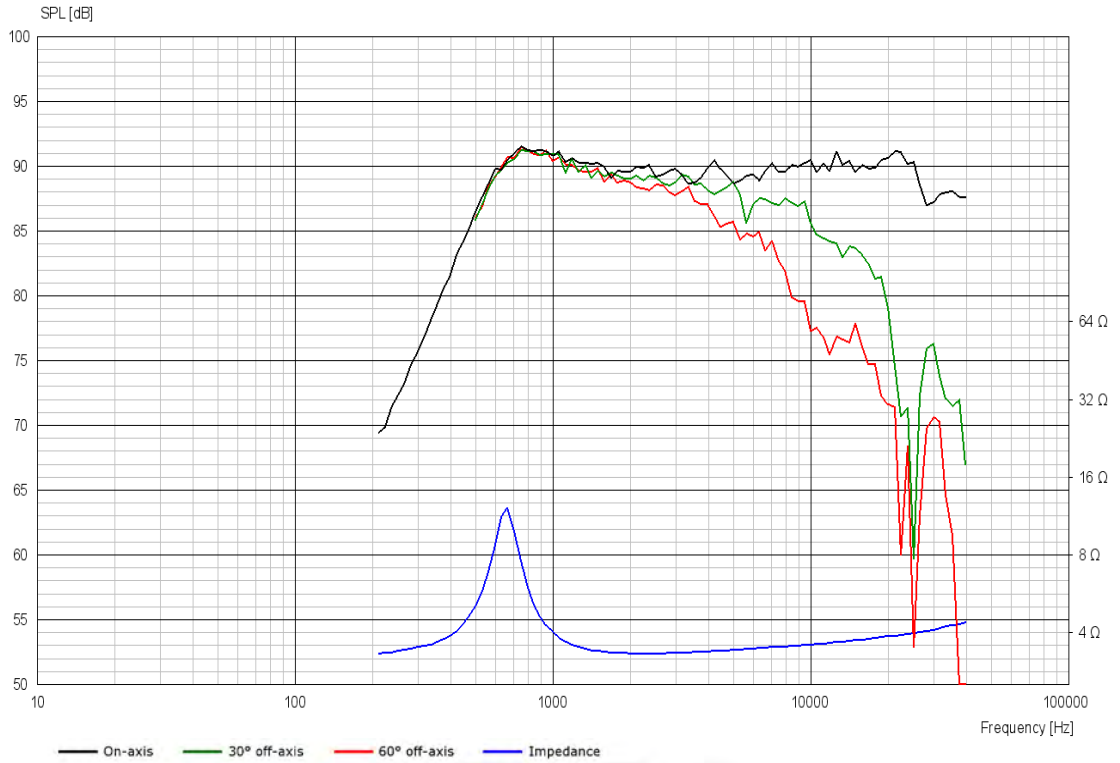
Voice Coil & Magnet Data

Voice coil diameter	26 mm
Voice coil height	2.0 mm
Voice coil layers	2
Height of gap	2.5 mm
Linear excursion	± 0.25 mm
Max mech. excursion	± 1.6 mm
Unit weight	0.15 kg

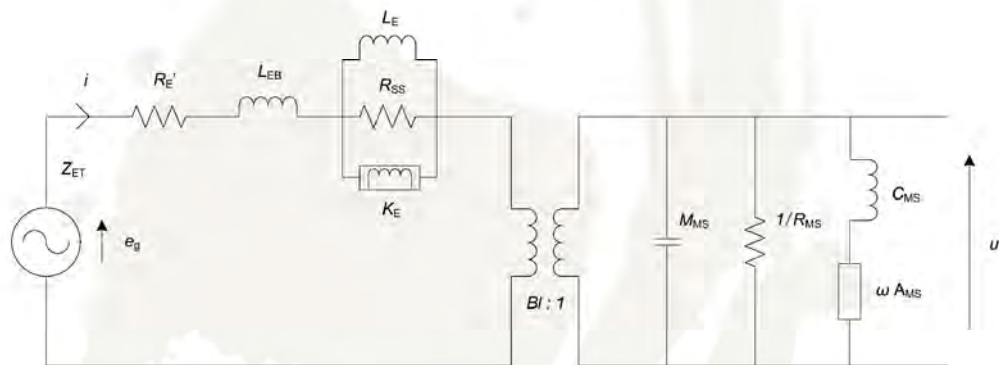


TWEETER

R3004/602005



Advanced Parameters (Preliminary)



Electrical data

Resistance [$R_{E'}$]	- Ω
Free inductance [L_{EB}]	- mH
Bound inductance [L_E]	- mH
Semi-inductance [K_E]	- SH
Shunt resistance [R_{SS}]	- Ω

Mechanical Data

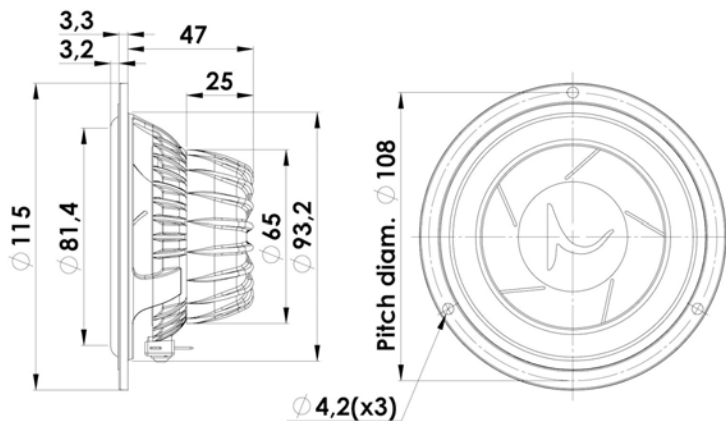
Force Factor [Bl]	- Tm
Moving mass [M_{MS}]	- g
Compliance [C_{MS}]	- mm/N
Mechanical resistance [R_{MS}]	- kg/s
Admittance [A_{MS}]	- mm/N



MIDRANGE

11M/4631G05

The GOLD SERIES are specially selected units from Scan-Speak's well-known home audio speakers. Which have been upgraded and optimized for automotive use. This series enables audiophiles to experience in their vehicle the - TRUE TO LIVE - that they enjoy from their high-end home audio system.



KEY FEATURES:

- Sliced Paper Cone
- Low-Loss Linear Suspension
- High Grade Neo Magnet
- Compact Neodymium Magnet System
- Robust Alu Chassis
- Protective Magnet Cup with Grill over Pole Vent

T-S Parameters

Resonance frequency [fs]	68 Hz
Mechanical Q factor [Qms]	4.54
Electrical Q factor [Qes]	0.33
Total Q factor [Qts]	0.31
Force factor [Bl]	5.5 Tm
Mechanical resistance [Rms]	0.67 kg/s
Moving mass [Mms]	7.1 g
Compliance [Cms]	0.77 mm/N
Effective diaph. diameter [D]	80 mm
Effective piston area [Sd]	50 cm ²
Equivalent volume [Vas]	2.7 l
Sensitivity (2.83V/1m)	90 dB
Ratio Bl/√Re	3.03 N/√W
Ratio fs/Qts	219 Hz

Notes:

IEC specs. refer to IEC 60268-5 third edition.
All Scan-Speak products are RoHS compliant.
Data are subject to change without notice.
Datasheet updated: March 8, 2017.

Electrical Data

Nominal impedance [Zn]	4 Ω
Minimum impedance [Zmin]	3.6 Ω
Maximum impedance [Zo]	43 Ω
DC resistance [Re]	3.3 Ω
Voice coil inductance [Le]	0.06 mH

Power Handling

100h RMS noise test (IEC 17.1)*	40 W
Long-term max power (IEC 17.3)*	70 W

*Filter: 2. order HP Butterworth, 200 Hz

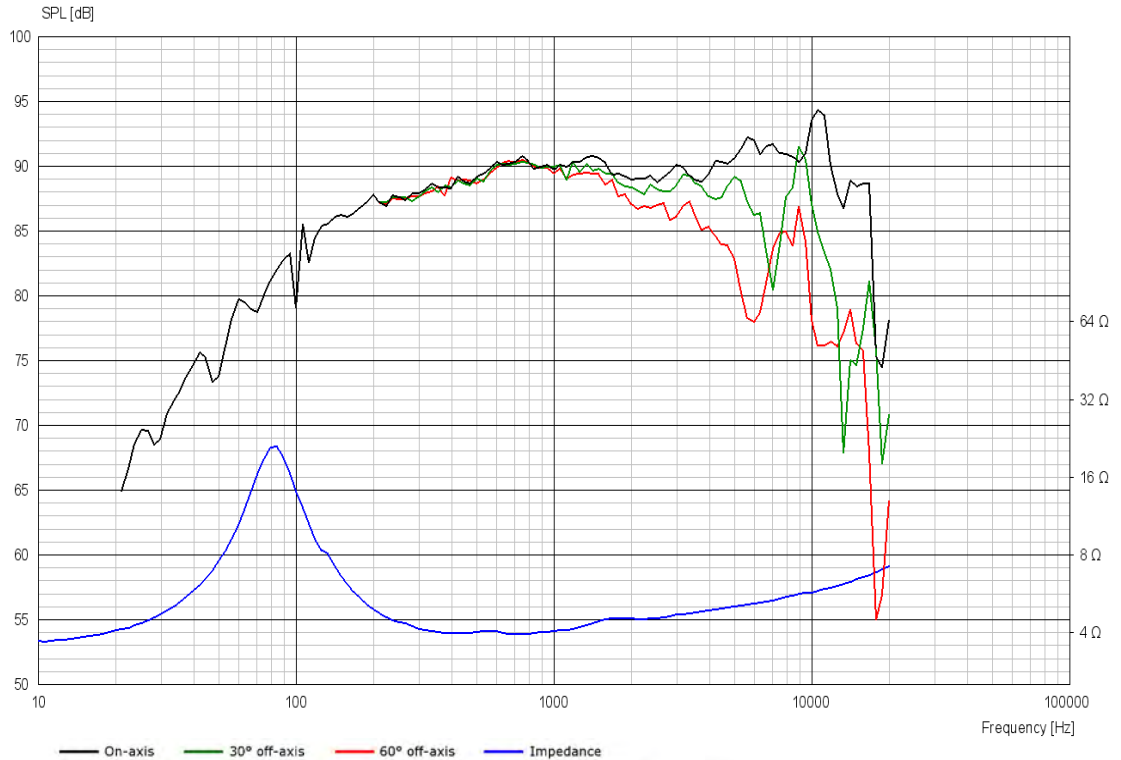
Voice Coil & Magnet Data

Voice coil diameter	38 mm
Voice coil height	10 mm
Voice coil layers	2
Height of gap	4 mm
Linear excursion	± 3 mm
Max mech. excursion	± 7 mm
Unit weight	0.6 kg

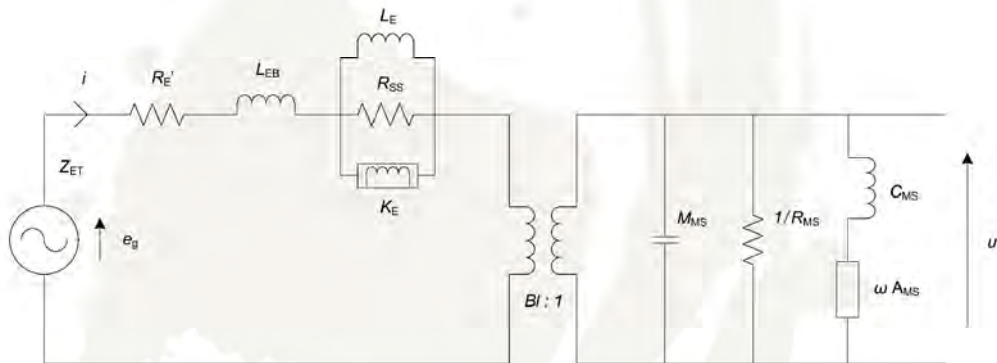


MIDRANGE

11M/4631G05



Advanced Parameters (Preliminary)



Electrical data

Resistance [$R_{E'}$]	- Ω
Free inductance [L_{EB}]	- mH
Bound inductance [L_E]	- mH
Semi-inductance [K_E]	- SH
Shunt resistance [R_{SS}]	- Ω

Mechanical Data

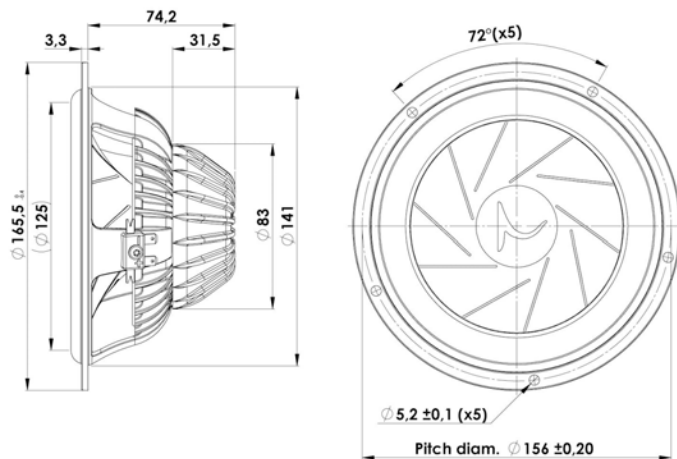
Force Factor [Bl]	- Tm
Moving mass [M_{MS}]	- g
Compliance [C_{MS}]	- mm/N
Mechanical resistance [R_{MS}]	- kg/s
Admittance [A_{MS}]	- mm/N



MIDWOOFER

16W/4538G05

16W/4538G05 features a sandwich cone with a sliced paper membrane combined with a polycarbonate rearside membrane, a brand new technology that are extremely robust, well dampened and suppresses cone breakup modes dramatically. This in combination with low-loss linear suspension and its Symmetrical Drive High-Grade Neodymium magnet offers outstanding sound performance.



KEY FEATURES:

- Sandwich Cone w. Slices
- High Grade Compact Neo magnet System
- Low Damping SBR Rubber Surround
- Low-Loss linear suspension
- Patented Symmetrical Drive Motor Design
- Robust Die cast Alu Chassis

T-S Parameters

Resonance frequency [fs]	36 Hz
Mechanical Q factor [Qms]	3.82
Electrical Q factor [Qes]	0.39
Total Q factor [Qts]	0.35
Force factor [Bl]	5.5 Tm
Mechanical resistance [Rms]	1 kg/s
Moving mass [Mms]	16.9 g
Compliance [Cms]	1.12 mm/N
Effective diaph. diameter [D]	125 mm
Effective piston area [Sd]	123 cm ²
Equivalent volume [Vas]	24 l
Sensitivity (2.83V/1m)	90 dB
Ratio Bl/√Re	3.12 N/√W
Ratio fs/Qts	103 Hz

Notes:

IEC specs. refer to IEC 60268-5 third edition.
All Scan-Speak products are RoHS compliant.
Data are subject to change without notice.
Datasheet updated: March 8, 2017.

Electrical Data

Nominal impedance [Zn]	4 Ω
Minimum impedance [Zmin]	3.5 Ω
Maximum impedance [Zo]	35 Ω
DC resistance [Re]	3.1 Ω
Voice coil inductance [Le]	0.18 mH

Power Handling

100h RMS noise test (IEC 17.1)	70 W
Long-term max power (IEC 17.3)	125 W

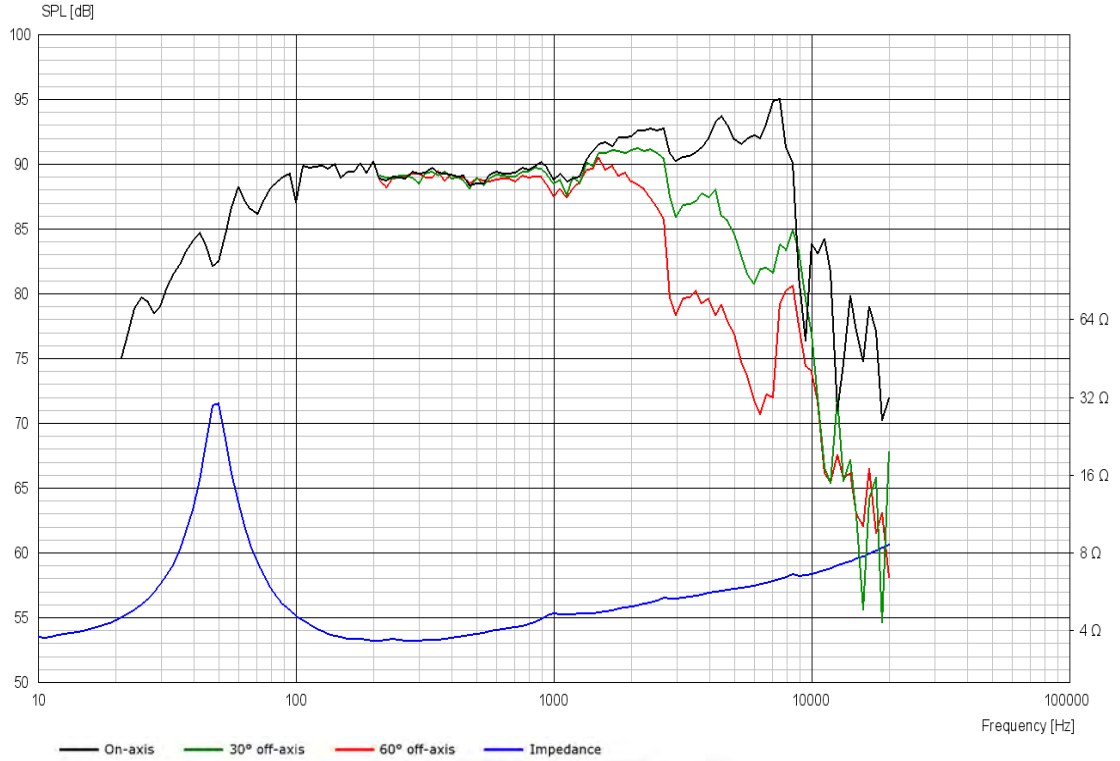
Voice Coil & Magnet Data

Voice coil diameter	38 mm
Voice coil height	17.2 mm
Voice coil layers	2
Height of gap	4 mm
Linear excursion	± 6.6 mm
Max mech. excursion	± 13.5 mm
Unit weight	1 kg

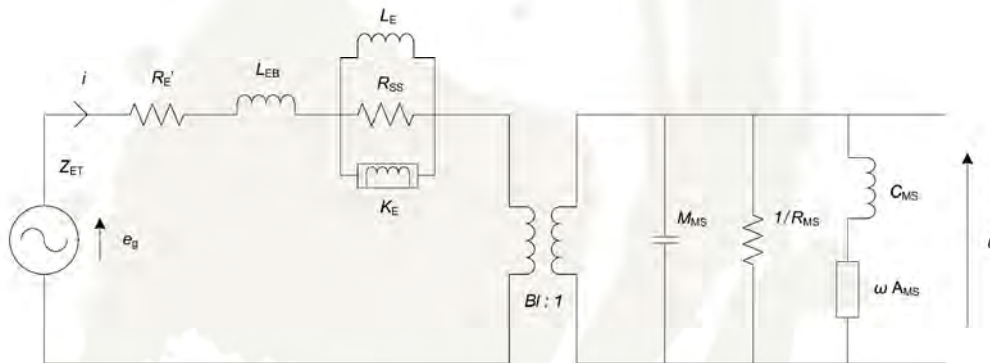


MIDWOOFER

16W/4538G05



Advanced Parameters (Preliminary)



Electrical data

Resistance [$R_{E'}$]	- Ω
Free inductance [L_{EB}]	- mH
Bound inductance [L_E]	- mH
Semi-inductance [K_E]	- SH
Shunt resistance [R_{SS}]	- Ω

Mechanical Data

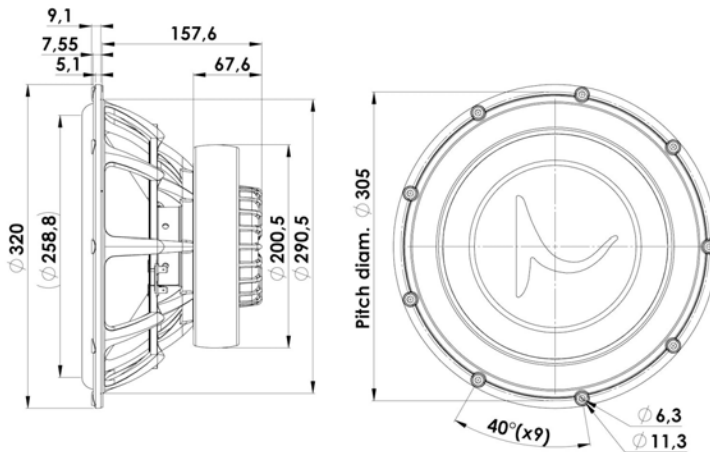
Force Factor [Bl]	- Tm
Moving mass [M_{MS}]	- g
Compliance [C_{MS}]	- mm/N
Mechanical resistance [R_{MS}]	- kg/s
Admittance [A_{MS}]	- mm/N



SUBWOOFER

32W/4878T05

The GOLD SERIES are specially selected units from Scan-Speak's well-known home audio speakers. Which have been upgraded and optimized for automotive use. This series enables audiophiles to experience in their vehicle the - TRUE TO LIVE - that they enjoy from their high-end home audio system.



KEY FEATURES:

- Paper sandwich cone with patented foam filling
- Patented Symmetrical Drive motor
- Large dustcap w. logo
- Extreme long linear excursion (+/-14mm)
- 3" Voice coil, Titanium former, paper reinforced
- Stiff robust die cast alu chassis

T-S Parameters

Resonance frequency [fs]	17 Hz
Mechanical Q factor [Qms]	7
Electrical Q factor [Qes]	0.33
Total Q factor [Qts]	0.32
Force factor [Bl]	12.5 Tm
Mechanical resistance [Rms]	2.42 kg/s
Moving mass [Mms]	165 g
Compliance [Cms]	0.52 mm/N
Effective diaph. diameter [D]	260 mm
Effective piston area [Sd]	526 cm ²
Equivalent volume [Vas]	180 l
Sensitivity (2.83V/1m)	89 dB
Ratio Bl/√Re	7.1 N/√W
Ratio fs/Qts	56.3 Hz

Notes:

IEC specs. refer to IEC 60268-5 third edition.
All Scan-Speak products are RoHS compliant.
Data are subject to change without notice.
Datasheet updated: March 8, 2017.

Electrical Data

Nominal impedance [Zn]	4 Ω
Minimum impedance [Zmin]	4 Ω
Maximum impedance [Zo]	69 Ω
DC resistance [Re]	3.1 Ω
Voice coil inductance [Le]	0.5 mH

Power Handling

100h RMS noise test (IEC 17.1)	200 W
Long-term max power (IEC 17.3)	550 W

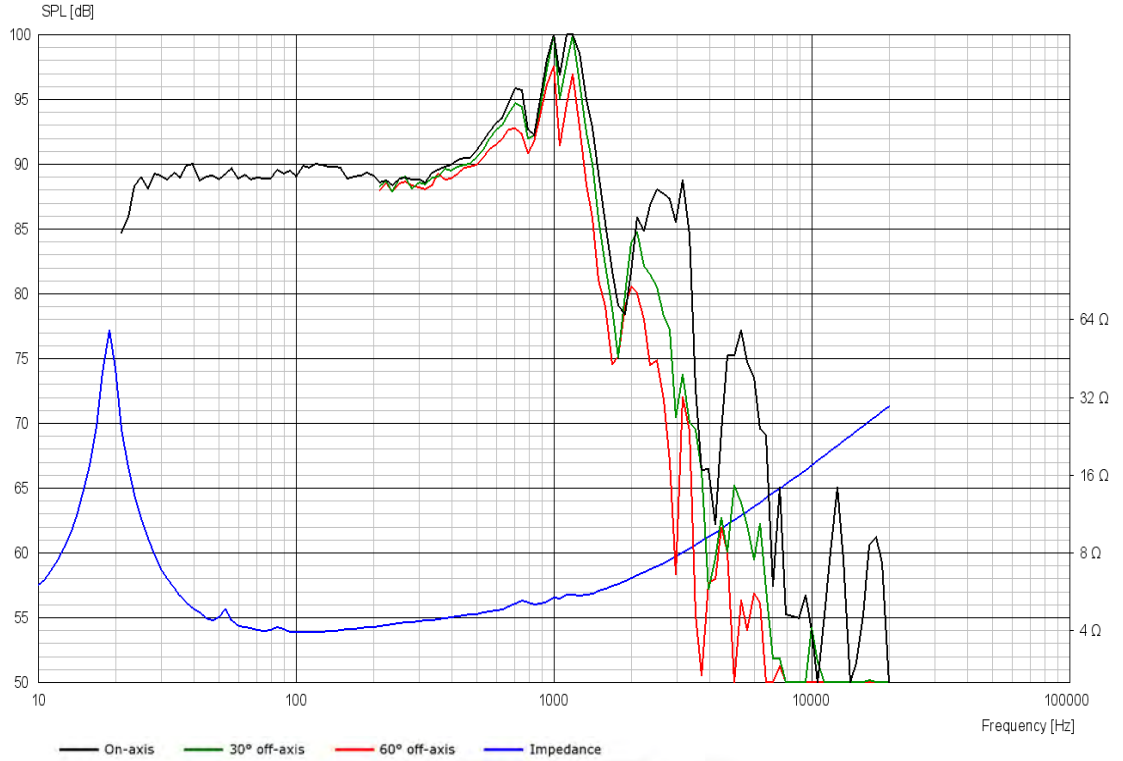
Voice Coil & Magnet Data

Voice coil diameter	75 mm
Voice coil height	36 mm
Voice coil layers	2
Height of gap	8 mm
Linear excursion	± 14 mm
Max mech. excursion	± 28 mm
Unit weight	7.5 kg

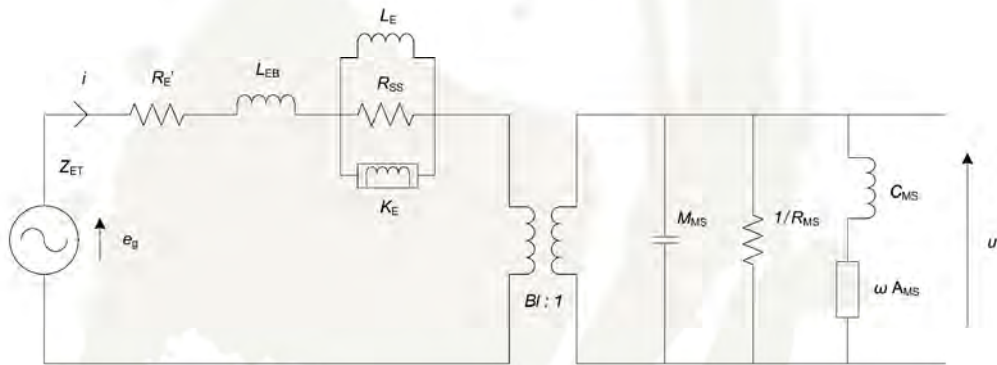


SUBWOOFER

32W/4878T05



Advanced Parameters (Preliminary)



Electrical data

Resistance [$R_{E'}$]	- Ω
Free inductance [L_{EB}]	- mH
Bound inductance [L_E]	- mH
Semi-inductance [K_E]	- SH
Shunt resistance [R_{SS}]	- Ω

Mechanical Data

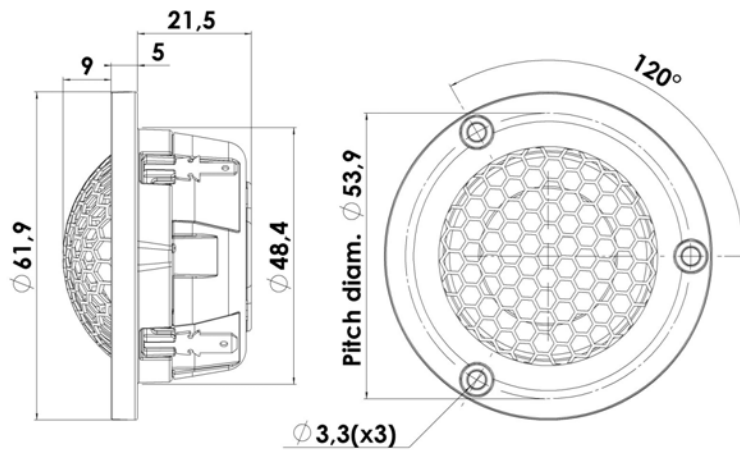
Force Factor [Bl]	- Tm
Moving mass [M_{MS}]	- g
Compliance [C_{MS}]	- mm/N
Mechanical resistance [R_{MS}]	- kg/s
Admittance [A_{MS}]	- mm/N



TWEETER

D3004/602006

Our SILVER SERIES are specially selected units from Scan-Speak's well-known home audio speakers. Which have been optimized for automotive use. This series enables audiophiles to experience in their vehicle the - TRUE TO LIVE - that they enjoy from their high-end home audio system.



KEY FEATURES:

- 1" Textile Dome Diaphragm
- Patented Symmetrical Drive (SD-2) motor
- Non Resonant Alu Rear Chamber
- Large Roll Surround f. Wide Dispersion
- Sound Transparent Protective Grill
- Die Cast Housing & Face Plate

T-S Parameters

Resonance frequency [fs]	700 Hz
Mechanical Q factor [Qms]	4.15
Electrical Q factor [Qes]	1.60
Total Q factor [Qts]	1.15
Force factor [Bl]	1.7 Tm
Mechanical resistance [Rms]	0.4 kg/s
Moving mass [Mms]	0.35 g
Compliance [Cms]	0.15 mm/N
Effective diaph. diameter [D]	30 mm
Effective piston area [Sd]	7 cm ²
Equivalent volume [Vas]	0.01 l
Sensitivity (2.83V/1m)	89 dB
Ratio Bl/√Re	0.98 N/√W
Ratio fs/Qts	606 Hz

Notes:

IEC specs. refer to IEC 60268-5 third edition.
All Scan-Speak products are RoHS compliant.
Data are subject to change without notice.
Datasheet updated: March 15, 2016.

Electrical Data

Nominal impedance [Zn]	4 Ω
Minimum impedance [Zmin]	3.5 Ω
Maximum impedance [Zo]	10.8 Ω
DC resistance [Re]	3 Ω
Voice coil inductance [Le]	0.02 mH

Power Handling

100h RMS noise test (IEC 17.1)*	50 W
Long-term max power (IEC 17.3)*	130 W

*Filter: 2. order HP Butterworth, 2.5 kHz

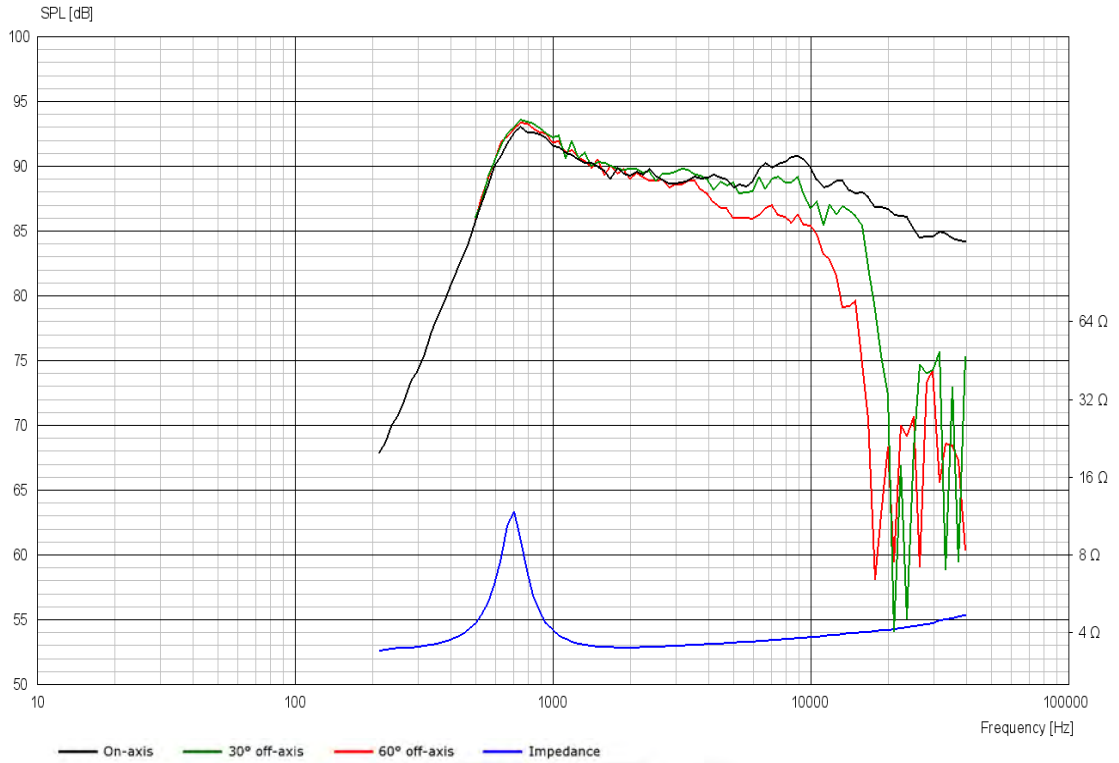
Voice Coil & Magnet Data

Voice coil diameter	26 mm
Voice coil height	2.1 mm
Voice coil layers	2
Height of gap	2.5 mm
Linear excursion	± 0.2 mm
Max mech. excursion	± 1.6 mm
Unit weight	0.15 kg

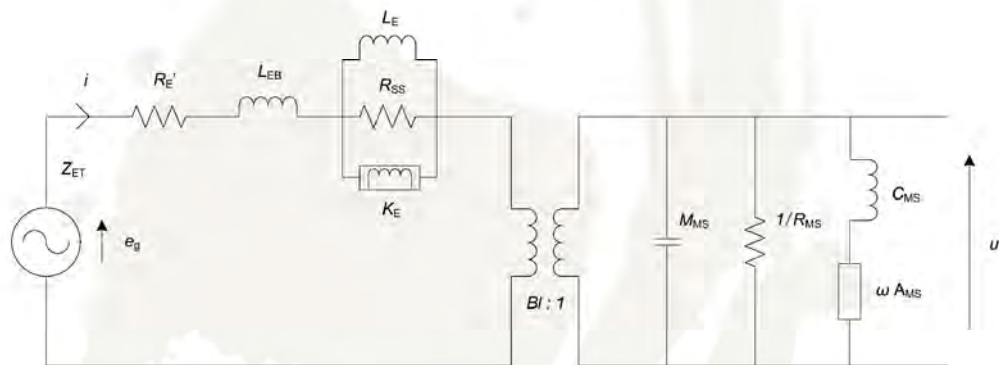


TWEETER

D3004/602006



Advanced Parameters (Preliminary)



Electrical data

Resistance [R _{E'}]	- Ω
Free inductance [L _{EB}]	- mH
Bound inductance [L _E]	- mH
Semi-inductance [K _E]	- SH
Shunt resistance [R _{SS}]	- Ω

Mechanical Data

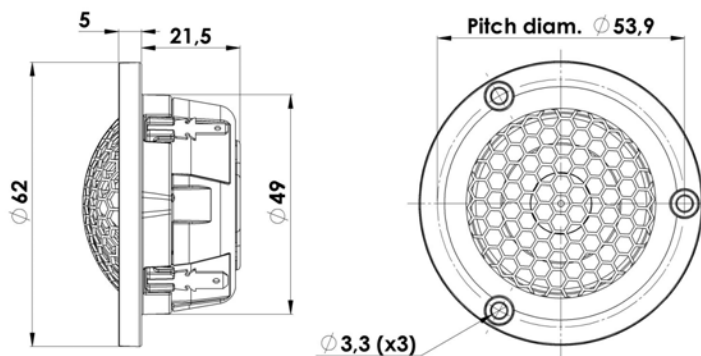
Force Factor [BI]	- Tm
Moving mass [M _{MS}]	- g
Compliance [C _{MS}]	- mm/N
Mechanical resistance [R _{MS}]	- kg/s
Admittance [A _{MS}]	- mm/N



TWEETER

R3004/602006

Our SILVER SERIES are specially selected units from Scan-Speak's well-known home audio speakers. Which have been optimized for automotive use. This series enables audiophiles to experience in their vehicle the - TRUE TO LIVE - that they enjoy from their high-end home audio system.



KEY FEATURES:

- 1" Ring Dome Diaphragm
- Patented Symmetrical Drive (SD-2) motor
- Non Resonant Alu Rear Chamber
- Patented Phase Plug Design
- Sound Transparent Protective Grill
- Die Cast Housing & Face Plate

T-S Parameters

Resonance frequency [fs]	625 Hz
Mechanical Q factor [Qms]	5.73
Electrical Q factor [Qes]	1.43
Total Q factor [Qts]	1.14
Force factor [Bl]	1.7 Tm
Mechanical resistance [Rms]	0.24 kg/s
Moving mass [Mms]	0.35 g
Compliance [Cms]	0.19 mm/N
Effective diaph. diameter [D]	27 mm
Effective piston area [Sd]	5.6 cm ²
Equivalent volume [Vas]	0.01 l
Sensitivity (2.83V/1m)	87.5 dB
Ratio Bl/√Re	0.98 N/√W
Ratio fs/Qts	547 Hz

Notes:

IEC specs. refer to IEC 60268-5 third edition.
All Scan-Speak products are RoHS compliant.
Data are subject to change without notice.
Datasheet updated: March 15, 2016.

Electrical Data

Nominal impedance [Zn]	4 Ω
Minimum impedance [Zmin]	3.8 Ω
Maximum impedance [Zo]	15.0 Ω
DC resistance [Re]	3 Ω
Voice coil inductance [Le]	0.02 mH

Power Handling

100h RMS noise test (IEC 17.1)*	40 W
Long-term max power (IEC 17.3)*	100 W

*Filter: 2. order HP Butterworth, 2.5 kHz

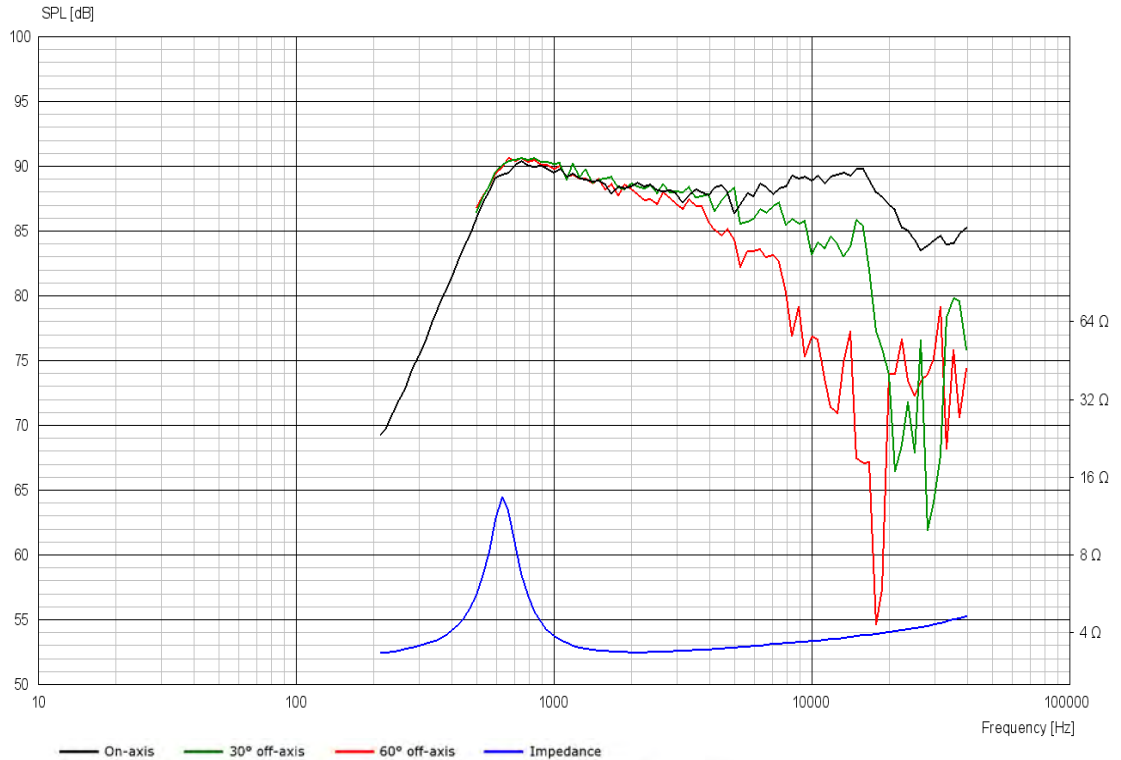
Voice Coil & Magnet Data

Voice coil diameter	26 mm
Voice coil height	2.1 mm
Voice coil layers	2
Height of gap	2.5 mm
Linear excursion	± 0.2 mm
Max mech. excursion	± 1.6 mm
Unit weight	0.15 kg

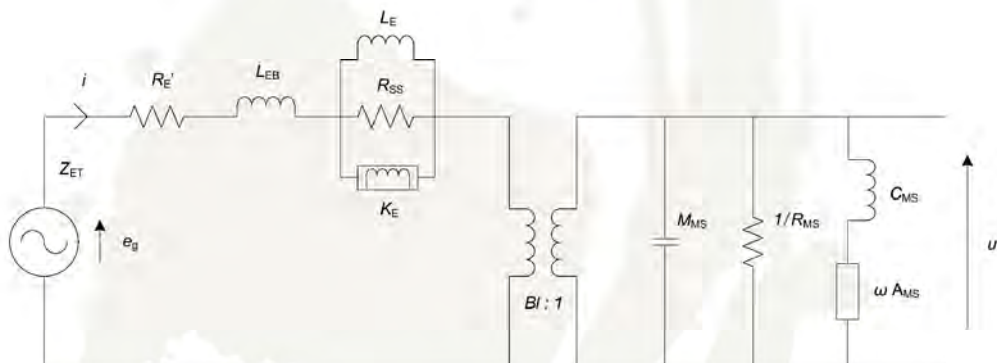


TWEETER

R3004/602006



Advanced Parameters (Preliminary)



Electrical data

Resistance [$R_{E'}$]	- Ω
Free inductance [L_{EB}]	- mH
Bound inductance [L_E]	- mH
Semi-inductance [K_E]	- SH
Shunt resistance [R_{RS}]	- Ω

Mechanical Data

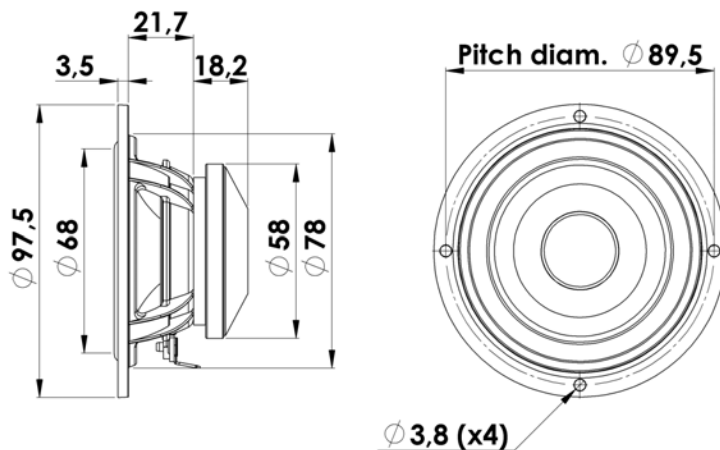
Force Factor [Bl]	- Tm
Moving mass [M_{MS}]	- g
Compliance [C_{MS}]	- mm/N
Mechanical resistance [R_{MS}]	- kg/s
Admittance [A_{MS}]	- mm/N



MIDRANGE

10M/4614G06

Our SILVER SERIES are specially selected units from Scan-Speak's well-known home audio speakers. Which have been optimized for automotive use. This series enables audiophiles to experience in their vehicle the - TRUE TO LIVE - that they enjoy from their high-end home audio system.



KEY FEATURES:

- Very wide Frequency Range
- Coated NRSC Fibre Glass Cone (patent)
- Compact Size, Neo magnet, Alu. Chassis
- High Sensitivity 90dB / 2,83V
- SBR Rubber Surround
- Copper Cap on Pole Piece

T-S Parameters

Resonance frequency [fs]	90 Hz
Mechanical Q factor [Qms]	3.2
Electrical Q factor [Qes]	0.32
Total Q factor [Qts]	0.29
Force factor [Bl]	3.9 Tm
Mechanical resistance [Rms]	0.49 kg/s
Moving mass [Mms]	2.8 g
Compliance [Cms]	1.1 mm/N
Effective diaph. diameter [D]	68 mm
Effective piston area [Sd]	36 cm ²
Equivalent volume [Vas]	2.0 l
Sensitivity (2.83V/1m)	90 dB
Ratio Bl/√Re	2.2 N/√W
Ratio fs/Qts	309 Hz

Notes:

IEC specs. refer to IEC 60268-5 third edition.
All Scan-Speak products are RoHS compliant.
Data are subject to change without notice.
Datasheet updated: March 15, 2016.

Electrical Data

Nominal impedance [Zn]	4 Ω
Minimum impedance [Zmin]	3.8 Ω
Maximum impedance [Zo]	34.5 Ω
DC resistance [Re]	3.2 Ω
Voice coil inductance [Le]	0.1 mH

Power Handling

100h RMS noise test (IEC 17.1)*	- W
Long-term max power (IEC 17.3)*	125 W

*Filter: 2. order HP Butterworth, 200Hz

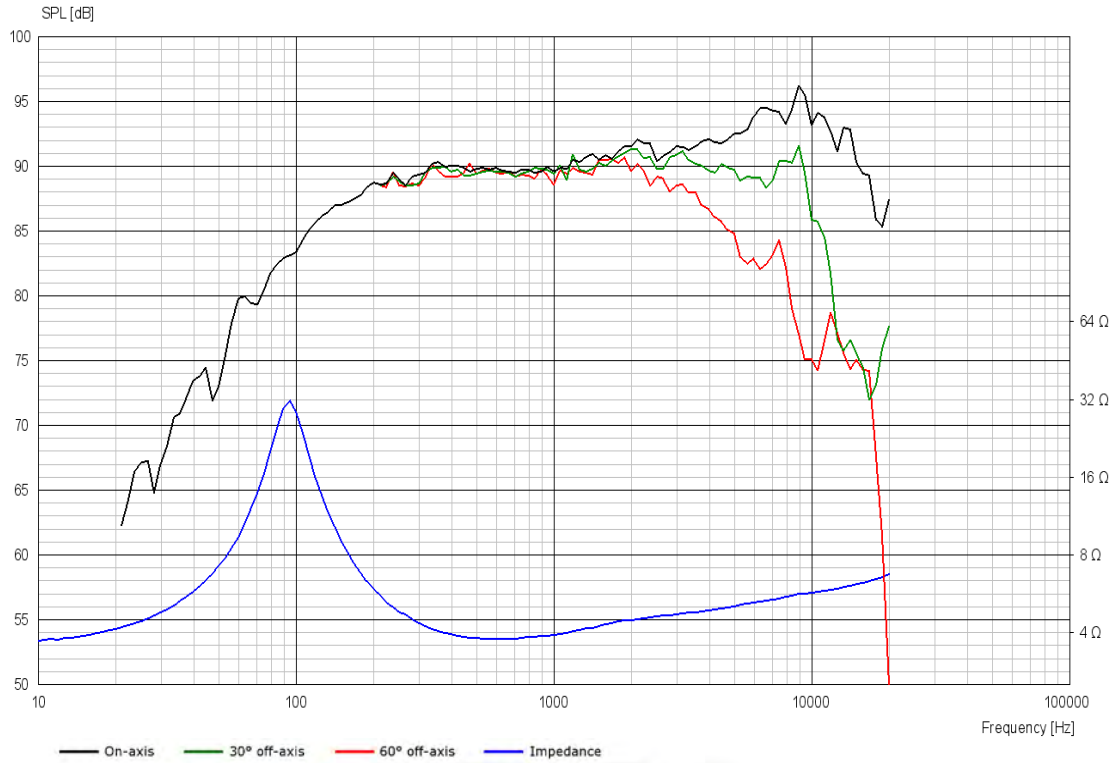
Voice Coil & Magnet Data

Voice coil diameter	20 mm
Voice coil height	9.2 mm
Voice coil layers	2
Height of gap	4 mm
Linear excursion	± 2.6 mm
Max mech. excursion	± 7 mm
Unit weight	0.3 kg

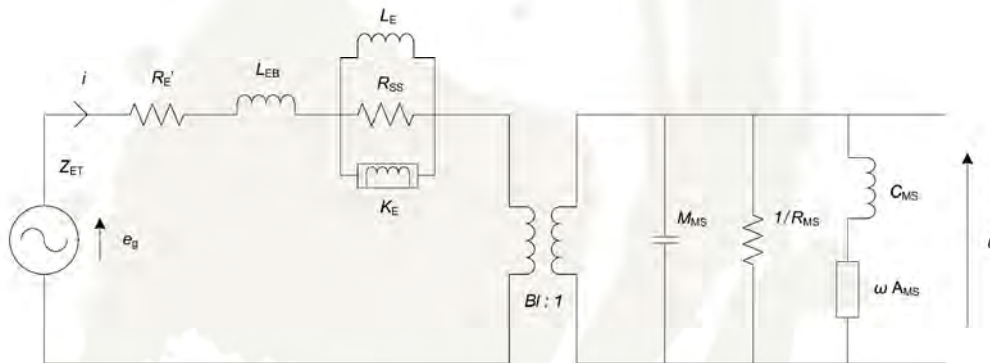


MIDRANGE

10M/4614G06



Advanced Parameters (Preliminary)



Electrical data

Resistance [Re']	3.22 Ω
Free inductance [Leb]	0.020 mH
Bound inductance [Le]	0.22 mH
Semi-inductance [Ke]	0.042 SH
Shunt resistance [Rss]	3 Ω

Mechanical Data

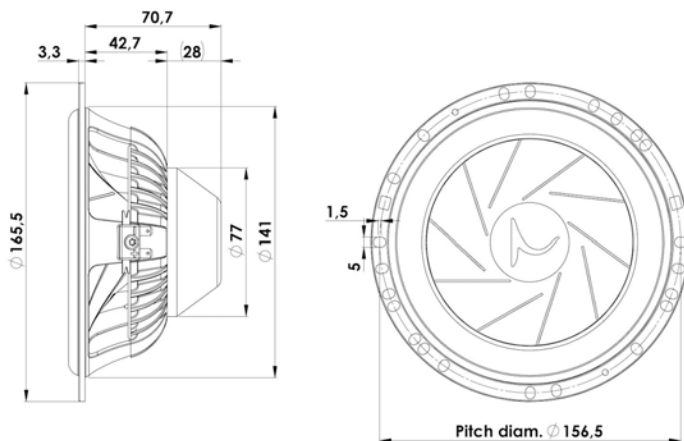
Force Factor [BI]	4.10 Tm
Moving mass [Mms]	3.1 g
Compliance [Cms]	0.72 mm/N
Mechanical resistance [Rms]	0.80 kg/s
Admittance [Ams]	0.12 mm/N



WOOFER

16W/4531G06

Our SILVER SERIES are specially selected units from Scan-Speak's well-known home audio speakers. Which have been optimized for automotive use. This series enables audiophiles to experience in their vehicle the - TRUE TO LIVE - that they enjoy from their high-end home audio system.



KEY FEATURES:

- Patented Symmetrical Drive Motor Design
- Robust Die cast Alu Chassis
- Low Damping SBR Rubber Surround
- Low-Loss linear suspension
- Sliced Cone (Controls Cone Breakups)
- Compact powerful Neo magnet

T-S Parameters

Resonance frequency [fs]	51 Hz
Mechanical Q factor [Qms]	5.08
Electrical Q factor [Qes]	0.66
Total Q factor [Qts]	0.59
Force factor [Bl]	5.18 Tm
Mechanical resistance [Rms]	1.02 kg/s
Moving mass [Mms]	16.3 g
Compliance [Cms]	0.59 mm/N
Effective diaph. diameter [D]	125 mm
Effective piston area [Sd]	123 cm ²
Equivalent volume [Vas]	12.6 l
Sensitivity (2.83V/1m)	88 dB
Ratio Bl/√Re	2.80 N/√W
Ratio fs/Qts	86 Hz

Notes:

IEC specs. refer to IEC 60268-5 third edition.
All Scan-Speak products are RoHS compliant.
Data are subject to change without notice.
Datasheet updated: August 2, 2016.

Electrical Data

Nominal impedance [Zn]	4 Ω
Minimum impedance [Zmin]	3.95 Ω
Maximum impedance [Zo]	32.63 Ω
DC resistance [Re]	3.46 Ω
Voice coil inductance [Le]	0.28 mH

Power Handling

100h RMS noise test (IEC 17.1)	70 W
Long-term max power (IEC 17.3)	125 W

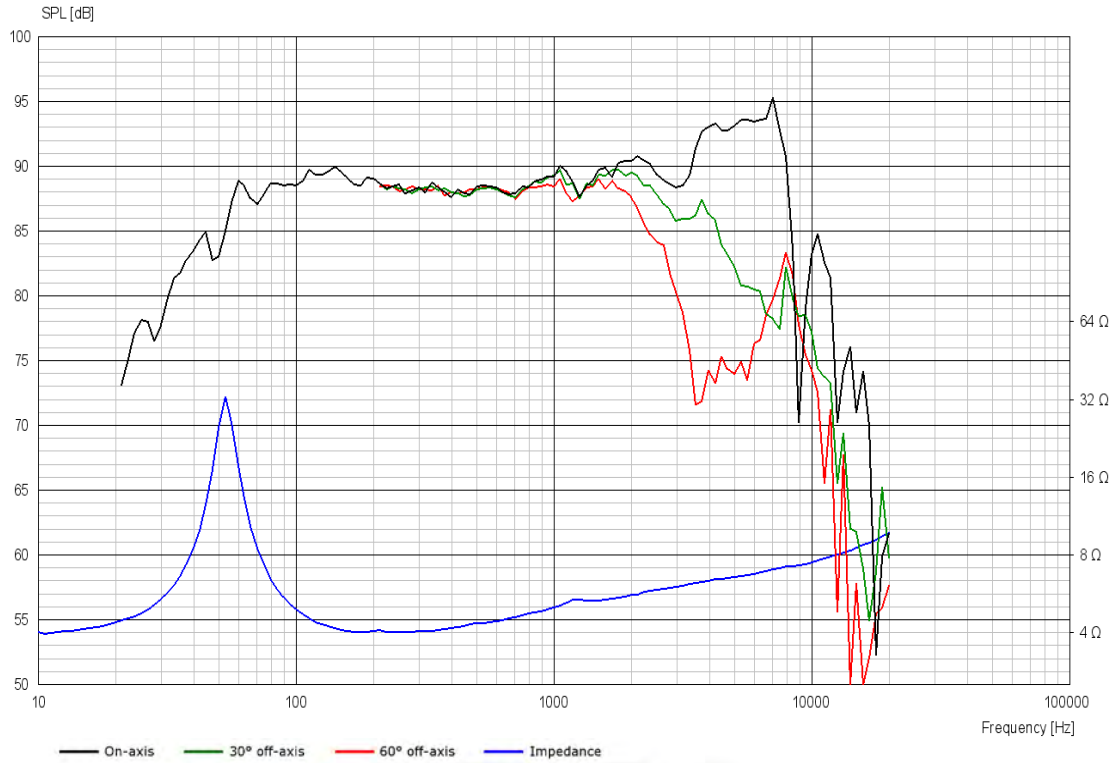
Voice Coil & Magnet Data

Voice coil diameter	38 mm
Voice coil height	17.5 mm
Voice coil layers	2
Height of gap	4 mm
Linear excursion	± 6.5 mm
Max mech. excursion	± 9.5 mm
Unit weight	0.8 kg

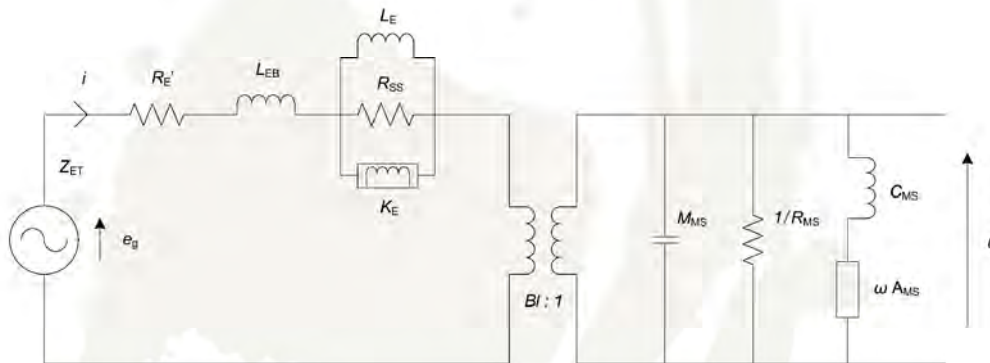


WOOFER

16W/4531G06



Advanced Parameters (Preliminary)



Electrical data

Resistance [$R_{E'}$]	- Ω
Free inductance [L_{EB}]	- mH
Bound inductance [L_E]	- mH
Semi-inductance [K_E]	- SH
Shunt resistance [R_{SS}]	- Ω

Mechanical Data

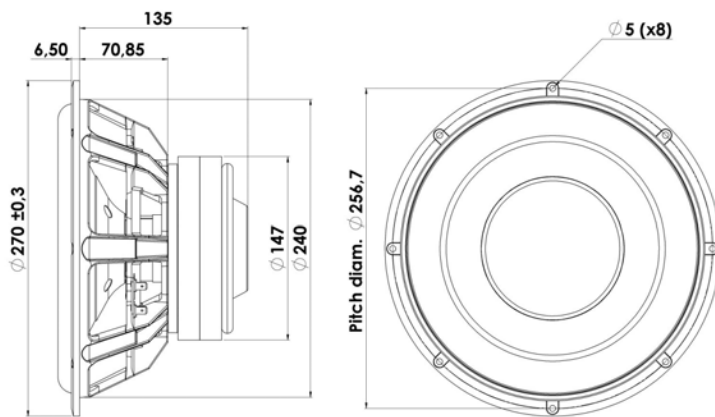
Force Factor [Bl]	- Tm
Moving mass [M_{MS}]	- g
Compliance [C_{MS}]	- mm/N
Mechanical resistance [R_{MS}]	- kg/s
Admittance [A_{MS}]	- mm/N



SUBWOOFER

26W/4558T06

Our SILVER SERIES are specially selected units from Scan-Speak's well-known home audio speakers. Which have been optimized for automotive use. This series enables audiophiles to experience in their vehicle the - TRUE TO LIVE - that they enjoy from their high-end home audio system.



KEY FEATURES:

- 56mm Peak Excursion, 25mm Linear
- Low Resonance Freq. 21Hz
- Magnet System w. Alu Ring
- High Output 88dB @ 2,83V
- Anodized Alu Cone, Fibre Glass Dust Cap
- Die cast Alu Chassis vented below spider

T-S Parameters

Resonance frequency [fs]	21 Hz
Mechanical Q factor [Qms]	5.56
Electrical Q factor [Qes]	0.33
Total Q factor [Qts]	0.31
Force factor [Bl]	10.5 Tm
Mechanical resistance [Rms]	2.49 kg/s
Moving mass [Mms]	105 g
Compliance [Cms]	0.55 mm/N
Effective diaph. diameter [D]	212 mm
Effective piston area [Sd]	352 cm ²
Equivalent volume [Vas]	94.9 l
Sensitivity (2.83V/1m)	88 dB
Ratio Bl/√Re	6.51 N/√W
Ratio fs/Qts	68 Hz

Notes:

IEC specs. refer to IEC 60268-5 third edition.
All Scan-Speak products are RoHS compliant.
Data are subject to change without notice.
Datasheet updated: March 15, 2016.

Electrical Data

Nominal impedance [Zn]	4 Ω
Minimum impedance [Zmin]	3.3 Ω
Maximum impedance [Zo]	46.8 Ω
DC resistance [Re]	2.6 Ω
Voice coil inductance [Le]	0.83 mH

Power Handling

100h RMS noise test (IEC 17.1)	150 W
Long-term max power (IEC 17.3)	350 W

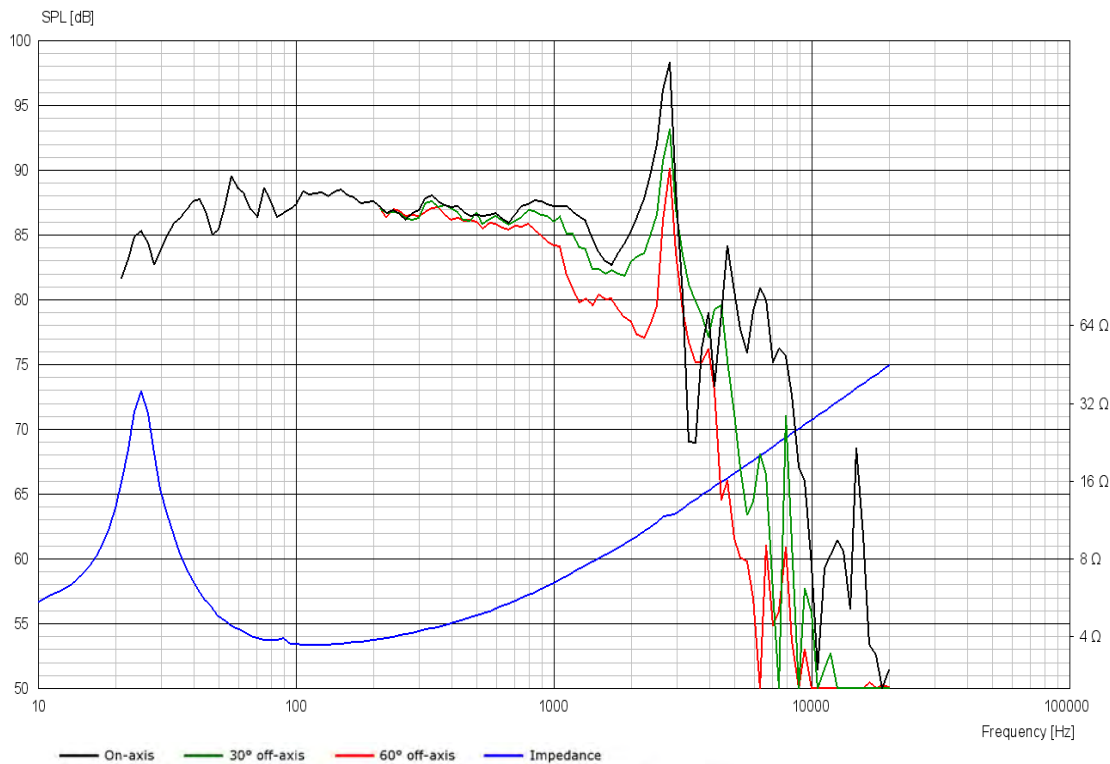
Voice Coil & Magnet Data

Voice coil diameter	51 mm
Voice coil height	33 mm
Voice coil layers	4
Height of gap	8 mm
Linear excursion	± 12.5 mm
Max mech. excursion	± 28 mm
Unit weight	6.2 kg

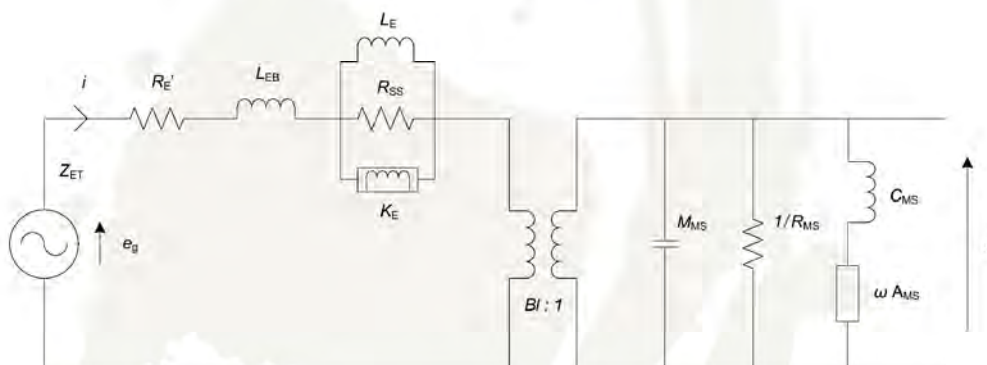


SUBWOOFER

26W/4558T06



Advanced Parameters (Preliminary)



Electrical data

Resistance [Re']	2.70 Ω
Free inductance [Leb]	0.241 mH
Bound inductance [Le]	1.75 mH
Semi-inductance [Ke]	0.063 SH
Shunt resistance [Rss]	252 Ω

Mechanical Data

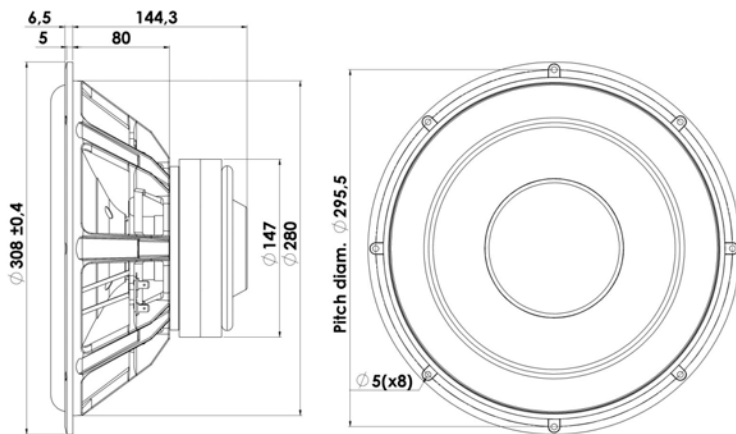
Force Factor [BI]	9.55 Tm
Moving mass [Mms]	102.2 g
Compliance [Cms]	0.71 mm/N
Mechanical resistance [Rms]	1.34 kg/s
Admittance [Ams]	0.06 mm/N



SUBWOOFER

30W/4558T06

Our SILVER SERIES are specially selected units from Scan-Speak's well-known home audio speakers. Which have been optimized for automotive use. This series enables audiophiles to experience in their vehicle the - TRUE TO LIVE - that they enjoy from their high-end home audio system.



KEY FEATURES:

- 56mm Peak Excursion, 25mm Linear
- Low Resonance Freq. 17Hz
- Magnet System w. Alu Ring
- High Output 89dB @ 2,83V
- Anodized Alu Cone, Fibre Glass Dust Cap
- Die cast Alu Chassis vented below spider

T-S Parameters

Resonance frequency [fs]	17 Hz
Mechanical Q factor [Qms]	5.01
Electrical Q factor [Qes]	0.34
Total Q factor [Qts]	0.32
Force factor [Bl]	10.5 Tm
Mechanical resistance [Rms]	2.88 kg/s
Moving mass [Mms]	135 g
Compliance [Cms]	0.65 mm/N
Effective diaph. diameter [D]	244 mm
Effective piston area [Sd]	466 cm ²
Equivalent volume [Vas]	197 l
Sensitivity (2.83V/1m)	89 dB
Ratio Bl/√Re	6.51 N/√W
Ratio fs/Qts	53 Hz

Notes:

IEC specs. refer to IEC 60268-5 third edition.
All Scan-Speak products are RoHS compliant.
Data are subject to change without notice.
Datasheet updated: March 15, 2016.

Electrical Data

Nominal impedance [Zn]	4 Ω
Minimum impedance [Zmin]	3.3 Ω
Maximum impedance [Zo]	40.9 Ω
DC resistance [Re]	2.6 Ω
Voice coil inductance [Le]	0.83 mH

Power Handling

100h RMS noise test (IEC 17.1)	150 W
Long-term max power (IEC 17.3)	350 W

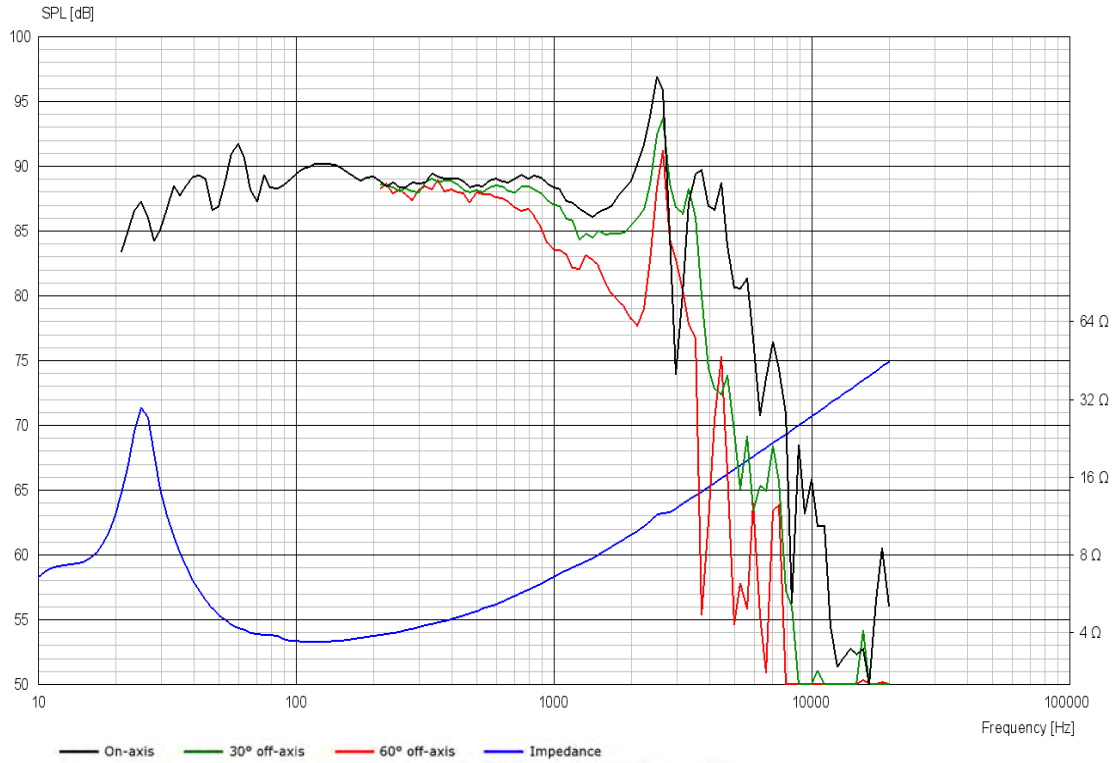
Voice Coil & Magnet Data

Voice coil diameter	51 mm
Voice coil height	33 mm
Voice coil layers	4
Height of gap	8 mm
Linear excursion	± 12.5 mm
Max mech. excursion	± 28 mm
Unit weight	6.3 kg

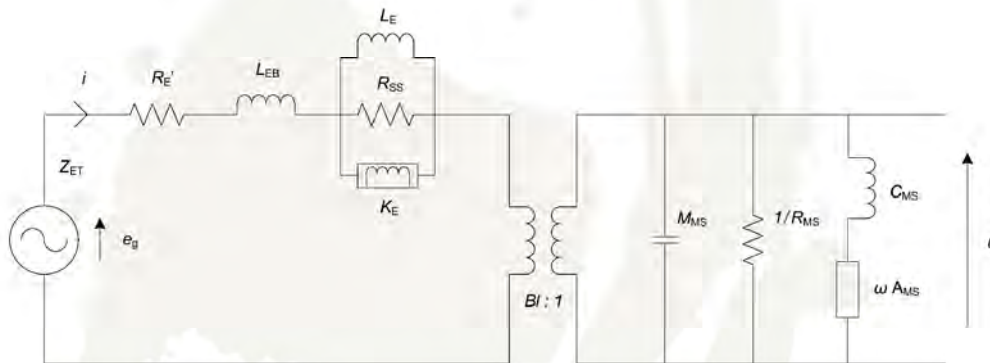


SUBWOOFER

30W/4558T06



Advanced Parameters (Preliminary)



Electrical data

Resistance [Re']	2.72 Ω
Free inductance [Leb]	0.280 mH
Bound inductance [Le]	1.96 mH
Semi-inductance [Ke]	0.054 SH
Shunt resistance [Rss]	260 Ω

Mechanical Data

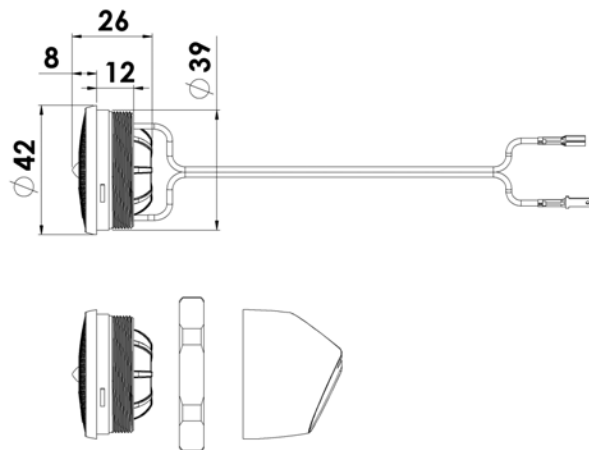
Force Factor [Bl]	10.37 Tm
Moving mass [Mms]	129.3 g
Compliance [Cms]	0.68 mm/N
Mechanical resistance [Rms]	1.80 kg/s
Admittance [Ams]	0.07 mm/N



TWEETER

R1904/613001

The Discovery series offer traditional design, superior sound, a solid construction, and a wide range of variants. Combining these elements - plus a wealth of technical features and finesses - it gives our customers the possibility of acquiring a tailor-made Scan-Speak solution with very good performance at a reasonable low price point!



KEY FEATURES:

- 3/4" Ring Dome tweeter
- Compact mounting dimensions
- Flange and Nut for doorpanel mounting
- Optimized for Car use
- Wedge House for dashboard mounting

T-S Parameters

Resonance frequency [fs]	1000 Hz
Mechanical Q factor [Qms]	8.03
Electrical Q factor [Qes]	2.02
Total Q factor [Qts]	1.61
Force factor [Bl]	1.4 Tm
Mechanical resistance [Rms]	0.18 kg/s
Moving mass [Mms]	0.23 g
Compliance [Cms]	0.11 mm/N
Effective diaph. diameter [D]	1.1 mm
Effective piston area [Sd]	3.8 cm ²
Equivalent volume [Vas]	0.002 l
Sensitivity (2.83V/1m)	87.0 dB
Ratio Bl/√Re	0.85 N/√W
Ratio fs/Qts	620 Hz

Notes:

IEC specs. refer to IEC 60268-5 third edition.
All Scan-Speak products are RoHS compliant.
Data are subject to change without notice.
Datasheet updated: February 22, 2011.

Electrical Data

Nominal impedance [Zn]	4 Ω
Minimum impedance [Zmin]	3.3 Ω
Maximum impedance [Zo]	13.4 Ω
DC resistance [Re]	2.7 Ω
Voice coil inductance [Le]	0.02 mH

Power Handling

100h RMS noise test (IEC 17.1)*	40 W
Long-term max power (IEC 17.3)*	- W

*Filter: 2. order HP Butterworth, 3 kHz

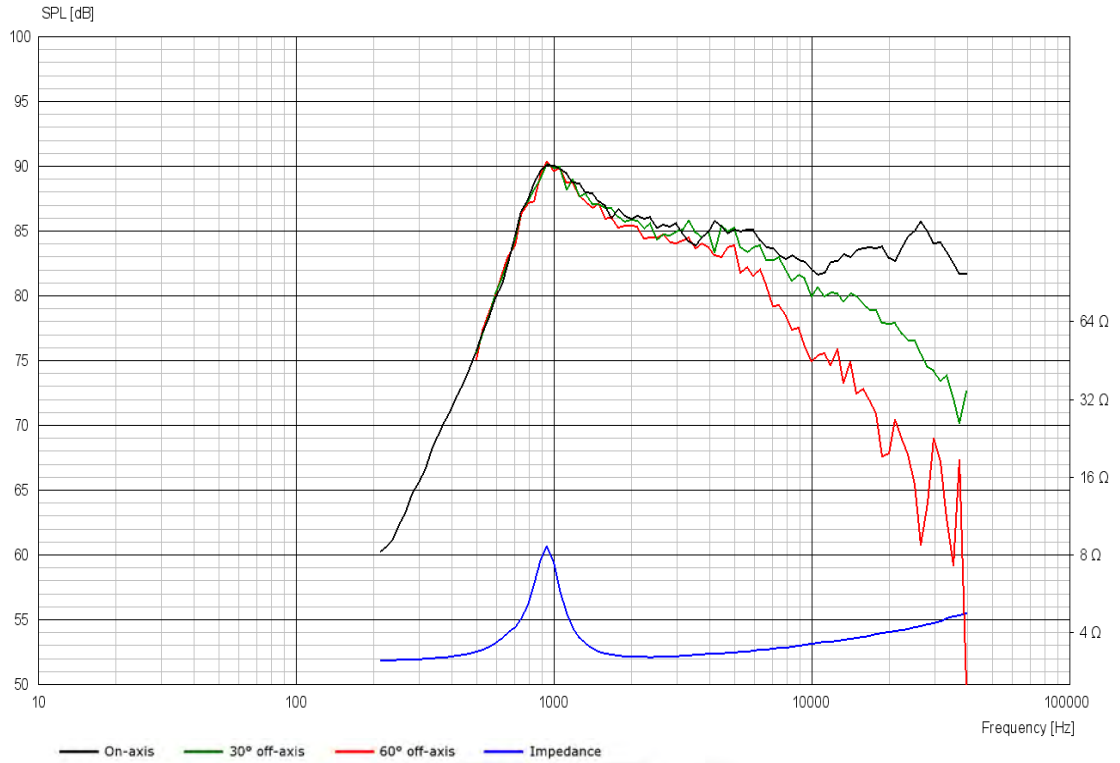
Voice Coil & Magnet Data

Voice coil diameter	19 mm
Voice coil height	1.8 mm
Voice coil layers	2
Height of gap	2 mm
Linear excursion	± 0.1 mm
Max mech. excursion	± 1.6 mm
Unit weight	0.05 kg

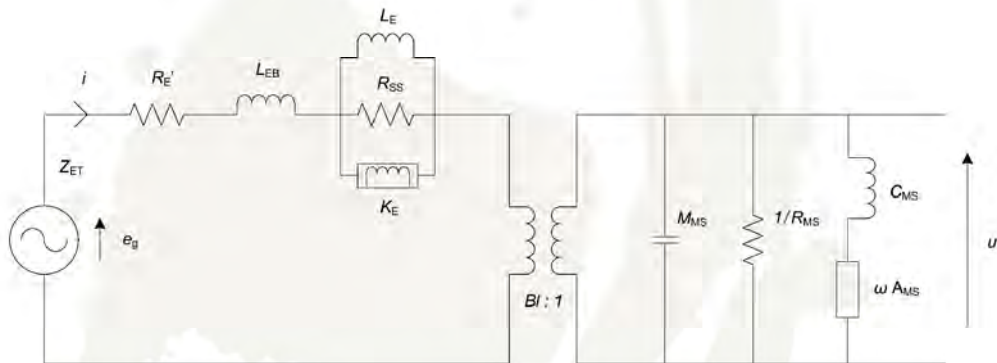


TWEETER

R1904/613001



Advanced Parameters (Preliminary)



Electrical data

Resistance [$R_{E'}$]	- Ω
Free inductance [L_{EB}]	- mH
Bound inductance [L_E]	- mH
Semi-inductance [K_E]	- SH
Shunt resistance [R_{SS}]	- Ω

Mechanical Data

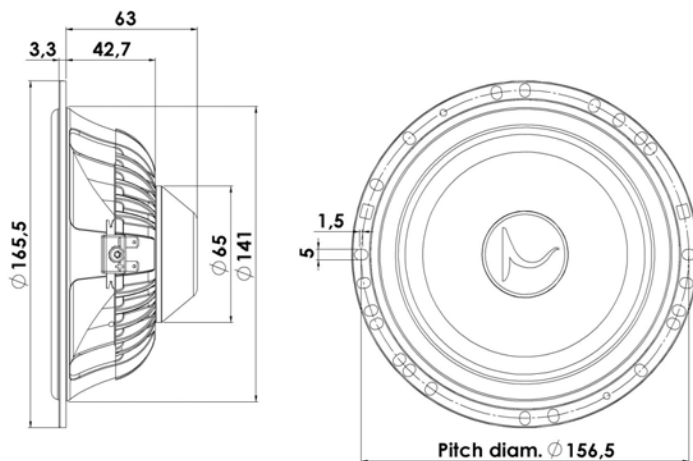
Force Factor [Bl]	- Tm
Moving mass [M_{MS}]	- g
Compliance [C_{MS}]	- mm/N
Mechanical resistance [R_{MS}]	- kg/s
Admittance [A_{MS}]	- mm/N



MIDWOOFER

16W/4434G00

The Discovery series offer traditional design, superior sound, a solid construction, and a wide range of variants. Combining these elements - plus a wealth of technical features and finesses - it gives our customers the possibility of acquiring a tailor-made Scan-Speak solution with very good performance at a reasonable low price point!



KEY FEATURES:

- Optimized for Car Use
- Aluminium Die cast Basket
- Black Coated NRSC Fibre Glass Cone
- EURO-DIN mounting flange
- Shallow mounting dimension
- Low Loss Suspension, with Rubber Surround

T-S Parameters

Resonance frequency [fs]	55 Hz
Mechanical Q factor [Qms]	3.06
Electrical Q factor [Qes]	0.56
Total Q factor [Qts]	0.48
Force factor [Bl]	4.8 Tm
Mechanical resistance [Rms]	1.41 kg/s
Moving mass [Mms]	12.5 g
Compliance [Cms]	0.67 mm/N
Effective diaph. diameter [D]	131 mm
Effective piston area [Sd]	138 cm ²
Equivalent volume [Vas]	17.9 l
Sensitivity (2.83V/1m)	90.5 dB
Ratio Bl/√Re	2.77 N/√W
Ratio fs/Qts	116 Hz

Notes:

IEC specs. refer to IEC 60268-5 third edition.
All Scan-Speak products are RoHS compliant.
Data are subject to change without notice.
Datasheet updated: November 21, 2011.

Electrical Data

Nominal impedance [Zn]	4 Ω
Minimum impedance [Zmin]	3.8 Ω
Maximum impedance [Zo]	19.4 Ω
DC resistance [Re]	3 Ω
Voice coil inductance [Le]	0.35 mH

Power Handling

100h RMS noise test (IEC 17.1)	40 W
Long-term max power (IEC 17.3)	- W

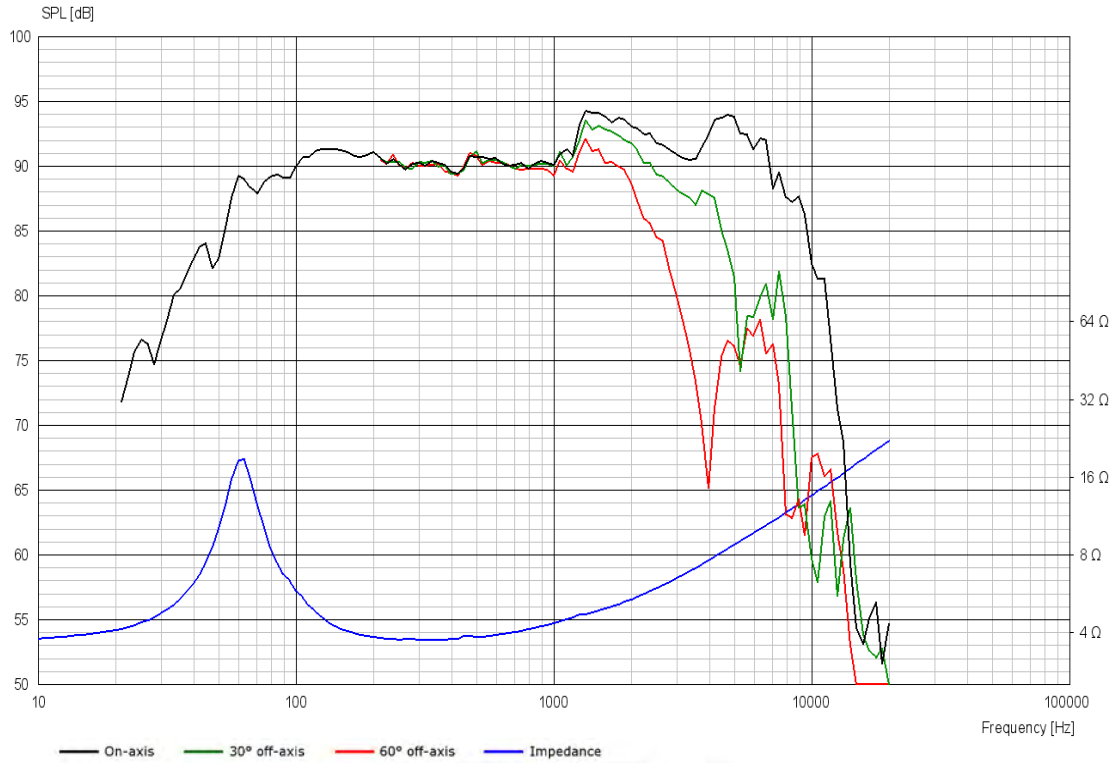
Voice Coil & Magnet Data

Voice coil diameter	32 mm
Voice coil height	12 mm
Voice coil layers	2
Height of gap	4 mm
Linear excursion	\pm 4 mm
Max mech. excursion	\pm 8 mm
Unit weight	0.6 kg

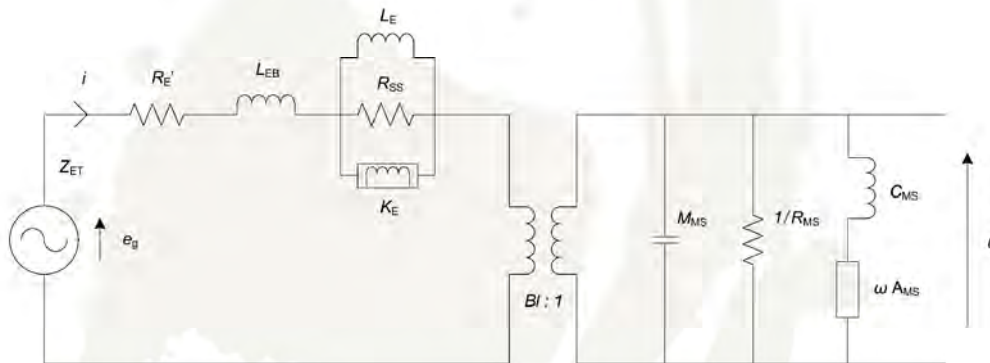


MIDWOOFER

16W/4434G00



Advanced Parameters (Preliminary)



Electrical data

Resistance [$R_{E'}$]	3.18 Ω
Free inductance [L_{EB}]	0.0561 mH
Bound inductance [L_E]	0.340 mH
Semi-inductance [K_E]	0.0516 SH
Shunt resistance [R_{SS}]	1633 Ω

Mechanical Data

Force Factor [Bl]	4.45 Tm
Moving mass [M_{MS}]	12.7 g
Compliance [C_{MS}]	0.519 mm/N
Mechanical resistance [R_{MS}]	0.642 kg/s
Admittance [A_{MS}]	0.0641 mm/N



AUTOMOTIVE

820013

The 6 inch Discovery Car Audio System offers superior sound, tailor-made for car use with outstanding performance, shallow design and a robust construction which will offer you excellent sound in you car for many years! The set contains 2 pcs. of R1904/613001 tweeter (19 mm) and 2 pcs. of 16W/4434G00 woofer (165 mm), 2 cross overs, special cables and grills.



KEY FEATURES:

- Midwoofers with EURO-DIN mounting chassis
- 2-Way Crossovers with tweeter protection
- Shallow Mounting Dimensions
- Very power full Neo magnet motor system
- Alu Die cast Chassis
- Patented NRSC Fibre Glass Cone

T-S Parameters (tweeter/woofer)

Resonance frequency [fs]	1000/55 Hz
Mechanical Q factor [Qms]	8.03/3.06
Electrical Q factor [Qes]	2.02/0.56
Total Q factor [Qts]	1.61/0.48
Force factor [Bl]	1.4/4.8 Tm
Mechanical resistance [Rms]	0.18/1.41 kg/s
Moving mass [Mms]	0.23/12.5 g
Compliance [Cms]	0.11/0.67 mm/N
Effective diaph. diameter [D]	1.1/6.6 mm
Effective piston area [Sd]	3.8/138 cm ²
Equivalent volume [Vas]	0.002/17.9 l
Sensitivity (2.83V/1m)	90 dB
Ratio Bl/√Re	0.85/2.77 N/√W
Ratio fs/Qts	620/116 Hz

Notes:

IEC specs. refer to IEC 60268-5 third edition.
All Scan-Speak products are RoHS compliant.
Data are subject to change without notice.
Datasheet updated: February 26, 2016.

Electrical Data (tweeter/woofer)

Nominal impedance [Zn]	4 Ω
Minimum impedance [Zmin]	3.3/3.8 Ω
Maximum impedance [Zo]	13.4/19.4 Ω
DC resistance [Re]	2.7/3 Ω
Voice coil inductance [Le]	0.02/0.35 mH

Power Handling

100h RMS noise test (IEC 17.1)*	100 W
Long-term max power (IEC 17.3)*	200 W

*Filter: 2nd order - 3000 Hz

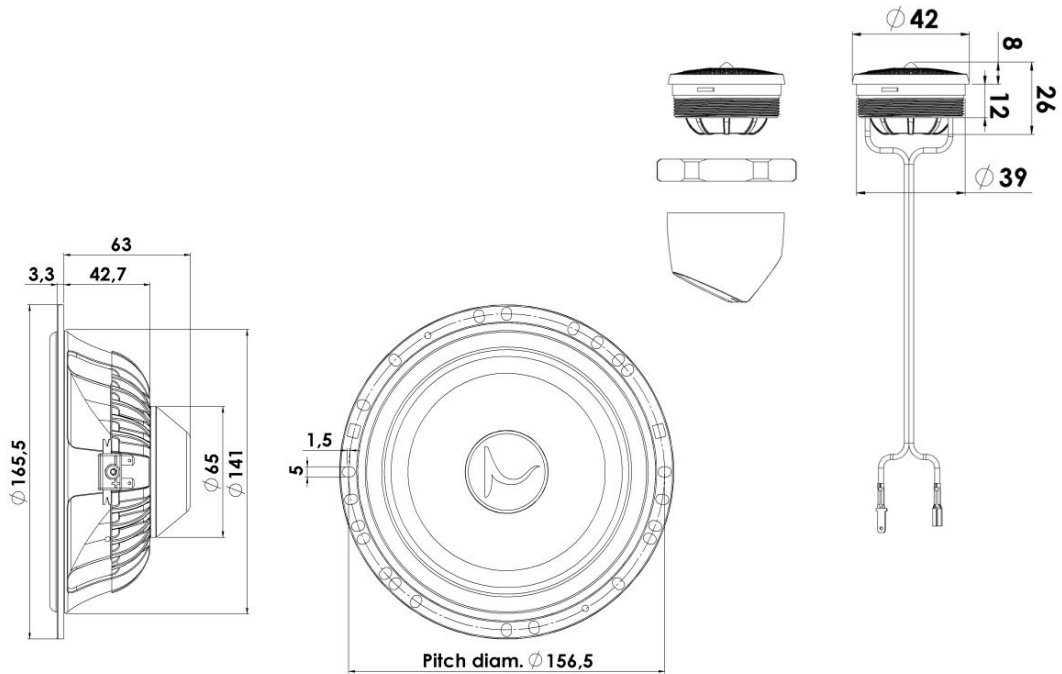
Voice Coil & Magnet Data (tweeter/woofer)

Voice coil diameter	19/32 mm
Voice coil height	1.8/12 mm
Voice coil layers	2/2
Height of gap	2/4 mm
Linear excursion	± 0.1/4 mm
Max mech. excursion	± 1.6/8 mm
Unit weight	0.05/0.6 kg



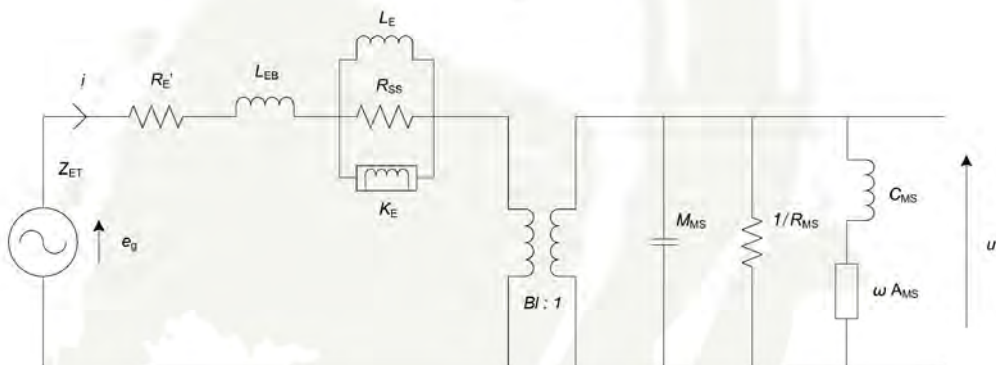
AUTOMOTIVE

820013



— On-axis — 30° off-axis — 60° off-axis — Impedance

Advanced Parameters (Preliminary)



Electrical data (tweeter/woofer)

Resistance [Re']	-/3.18 Ω
Free inductance [Leb]	-/0.0561 mH
Bound inductance [Le]	-/0.340 mH
Semi-inductance [Ke]	-/0.0516 SH
Shunt resistance [Rss]	-/1633 Ω

Mechanical Data (tweeter/woofer)

Force Factor [Bl]	-/4.45 Tm
Moving mass [Mms]	-/12.7 g
Compliance [Cms]	-/0.519 mm/N
Mechanical resistance [Rms]	-/0.642 kg/s
Admittance [Ams]	-/0.0641 mm/N



N.C. Madsensvej 1 · DK-6920 Videbaek · Denmark · Phone: +45 6040 5200 · info@scan-speak.dk