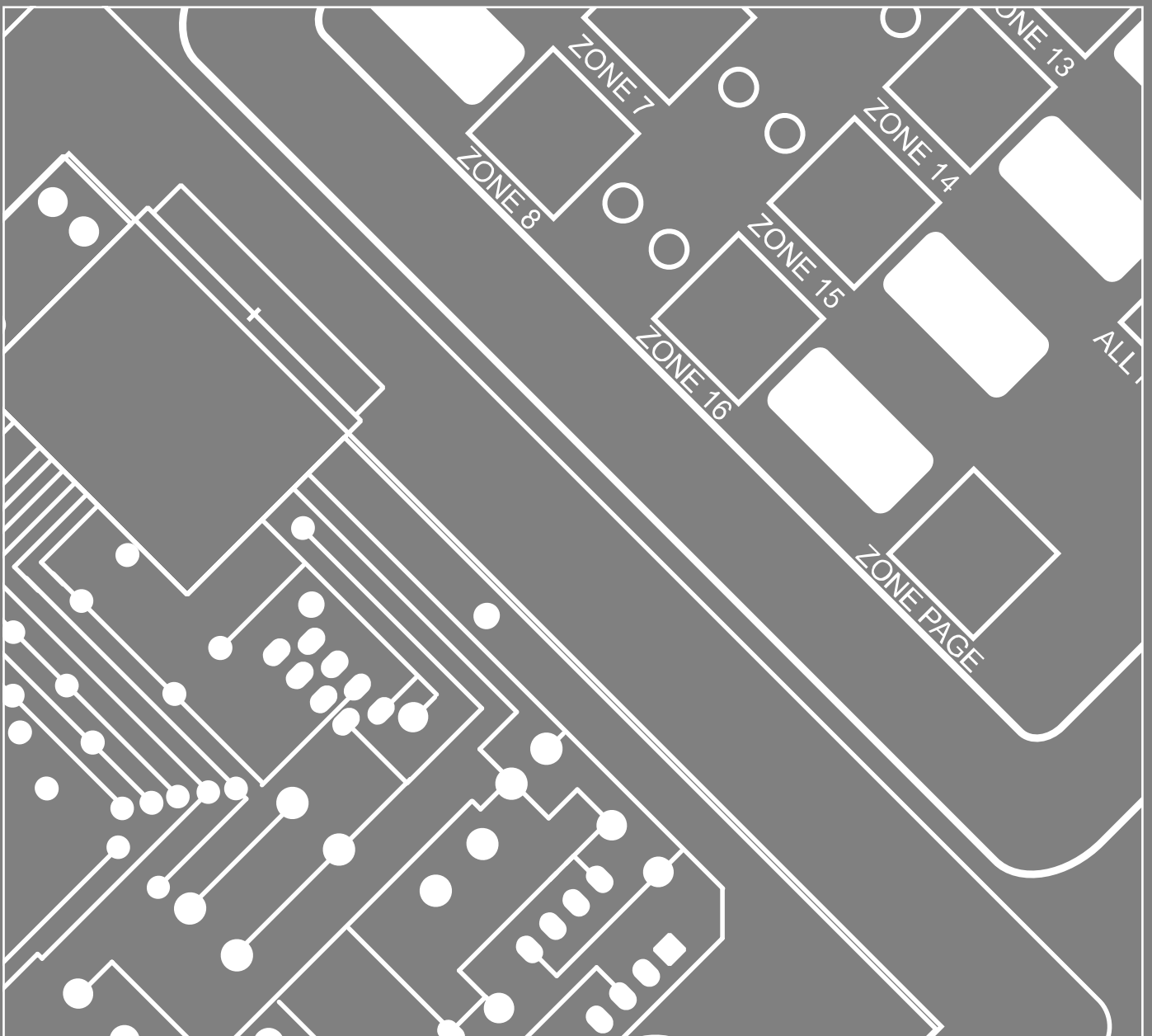




Australian Monitor  
INSTALLATION SERIES

# DigiPage8M DigiPage16M

PAGING STATION  
INSTALLATION AND OPERATION MANUAL





## IMPORTANT SAFETY INFORMATION



1. Save the carton and packing material even if the equipment has arrived in good condition. Should you ever need to ship the unit, use only the original factory packing.
2. Read all documentation before operating your equipment. Retain all documentation for future reference.
3. Follow all instructions printed on unit chassis for proper operation.
4. Do not spill water or other liquids into or on the unit, or operate the unit while standing in liquid.
5. Make sure power outlets conform to the power requirements listed on the back of the unit.
6. Do not use the unit if the electrical power cord is frayed or broken. The power supply cords should be routed so that they are not likely to be walked on or pinched by items placed upon or against them, paying particular attention to cords and plugs, convenience receptacles, and the point where they exit from the appliance.
7. Always operate the unit with the AC ground wire connected to the electrical system ground. Precautions should be taken so that the means of grounding of a piece of equipment is not defeated.
8. Mains voltage must be correct and the same as that printed on the rear of the unit. Damage caused by connection to improper AC voltage is not covered by any warranty.
9. Have gain controls on amplifiers turned down during power-up to prevent speaker damage if there are high signal levels at the inputs.
10. Power down & disconnect units from mains voltage before making connections.
11. Never hold a power switch in the "ON" position if it won't stay there itself!
12. Do not use the unit near stoves, heat registers, radiators, or other heat producing devices
13. Do not block fan intake or exhaust ports. Do not operate equipment on a surface or in an environment which may impede the normal flow of air around the unit, such as a bed, rug, weathersheet, carpet, or completely enclosed rack. If the unit is used in an extremely dusty or smoky environment, the unit should be periodically "blown free" of foreign matter.
14. Do not remove the cover. Removing the cover will expose you to potentially dangerous voltages. There are no user serviceable parts inside.
15. Do not drive the inputs with a signal level greater than that required to drive equipment to full output.
16. Do not connect the inputs / outputs of amplifiers or consoles to any other voltage source, such as a battery, mains source, or power supply, regardless of whether the amplifier or console is turned on or off.
17. Do not run the output of any amplifier channel back into another channel's input. Do not parallel- or series-connect an amplifier output with any other amplifier output.  
  
Australian Monitor Inc is not responsible for damage to loudspeakers for any reason.
18. Do not ground any red ("hot") terminal. Never connect a "hot" (red) output to ground or to another "hot" (red) output!
19. Non-use periods. The power cord of equipment should be unplugged from the outlet when left unused for a long period of time.
20. Service Information Equipment should be serviced by qualified service personnel when:
  - A. The power supply cord or the plug has been damaged.
  - B. Objects have fallen, or liquid has been spilled into the equipment
  - C. The equipment has been exposed to rain
  - D. The equipment does not appear to operate normally, or exhibits a marked change in performance
  - E. The equipment has been dropped, or the enclosure damaged.

THIS SAFETY INFORMATION IS OF A GENERAL NATURE AND MAY BE SUPERSEDED BY INSTRUCTIONS CONTAINED WITHIN THIS MANUAL

# INTRODUCTION AND CONTENTS

The Australian Monitor Installation Series DigiPage8M and DigiPage16MPaging Stations are 8 and 16 zone paging stations complete with a slimline gooseneck paging microphone.

The Paging stations are designed to be used with the DigiPage Zone Paging & Source Selection System and will allow paging into any individual zone, any combination of zones or All Call to all zones.

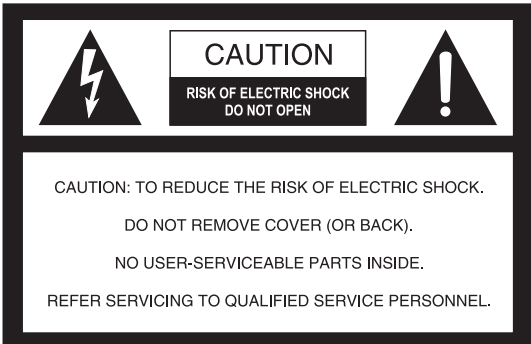


LED indicators provide the user with visual feedback of the zones being paged or if the zone selected is busy.

Ample label space is provided on the Paging Station, which also provides a microphone gain control.

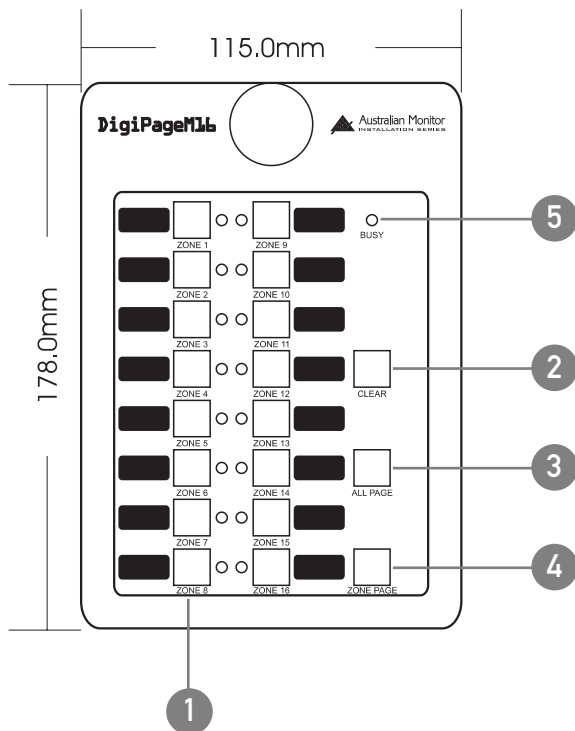
Connection to the DigiPage is via low cost CAT 5 cable and as with all Australian Monitor installation products, the Paging Station provides an elegant solution at a contractor friendly price.

INTRODUCTION	3
CONTROLS	4
INSTALLATION & SETUP	5
NOTES	6

AUS, EUR, USA  
Copyright 31st May 2003  
Rev A: 31st May 2003  
Rev B: 11th Aug 2004

		<p>This symbol is intended to alert the user to the presence of uninsulated “dangerous voltage” within the product’s enclosure that may be of sufficient magnitude to constitute a risk of electric shock to persons.</p>
<p><b>WARNING !</b></p> <p>TO REDUCE THE RISK OF FIRE OR ELECTRIC SHOCK. DO NOT EXPOSE THIS EQUIPMENT TO RAIN OR MOISTURE.</p>		<p>This symbol is intended to alert the user to the presence of important operation and maintenance (servicing) instructions in the literature accompanying the appliance.</p>
	<p>Caution:</p>	<p>To prevent electric shock do not use this (polarised) plug with an extension cord, receptacle or other outlet unless the blades can be fully inserted to prevent blade exposure. To prevent electric shock, match wide blade of plug to wide slot, fully insert.</p>

# CONTROLS



## 1 ZONE SELECT

These buttons allow selection of zones for paging. When selected, the adjacent LED glows green. Pressing the button again deselects the zone. The area next to the button is for labelling the zone. Selecting a zone does not instigate paging. See 4. ZONE PAGE.

## 2 CLEAR

This button clears all the selected zones.

## 3 ALL PAGE

This button pages to all zones. It is momentary so must be held while talking into the microphone. It activates the microphone and mutes the program sources. It does NOT clear the current zone selection configuration so the paging station will return to its previous state (selected zones) once the ALL PAGE button is released.

## 4 ZONE PAGE

This button pages to the current zone selection configuration as indicated by the ZONE select LEDs. The zones being paged have their program sources muted and the microphone becomes active. If no zones are selected the system will still show as busy when this button is pressed.

## 5 BUSY

This LED glows when the network or system is busy. This can be caused by the local paging station (you are making a page), another paging station, or a remote control panel being in use. Paging is not possible while the system is busy, however zone selections can still be made.

# INSTALLATION & SETUP

The CAT5 cable connects to the RJ45 socket on the rear panel of the paging station. This socket is a NEUTRIK™ connector designed to be used with the XLR style housing (model NE8MC) to improve reliability. Normal RJ45 connectors can also be used.

Plugging and unplugging the cable while the system is powered up may result in the system locking up and is not recommended. If this should happen, reset the DigiPage by switching off, then on.

## 6 GAIN

To accommodate different speech levels, there is a gain control on the base of the DigiPageM. This ships set to minimum and may be adjusted to suit. Increasing this control too far may cause the paging station to distort if loud or close speech levels are encountered.

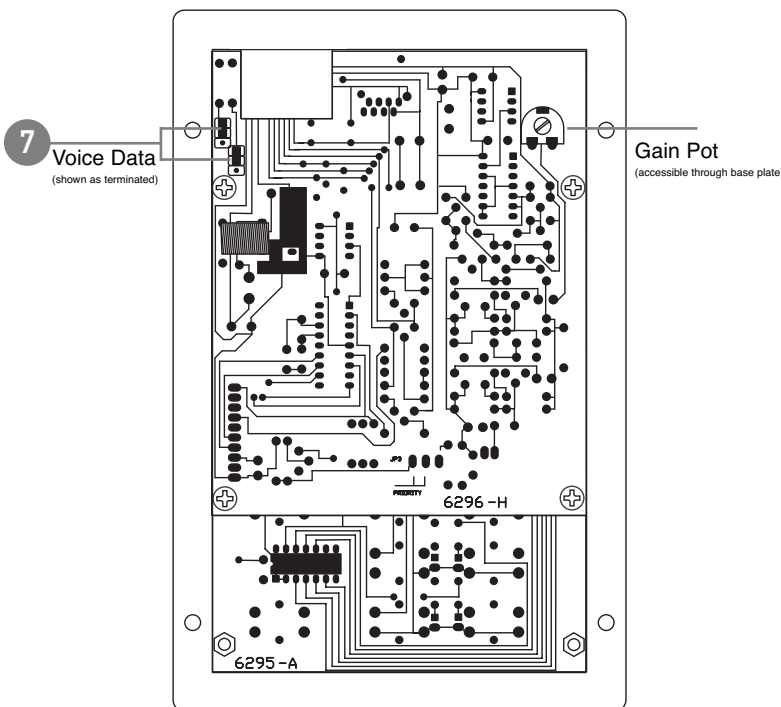
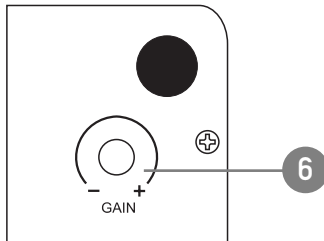
## 7 TERMINATING

In an RS485 network (of which the DigiPage is part of) it is important to terminate the last device in the network CAT5 RUN. Two jumpers are provided for the data transmission and the voice transmission to be terminated if that Paging Station is at the end of a CAT5 RUN (see diagram). Shipped as terminated.

**⚠ When making changes be sure to power off the system and disconnect from the network.**

**👉 NOTE: these stations are not compatible with the DigiPageJr network system.**

BASE PLATE SECTION



# NOTES



**AUSTRALIA AND NEW ZEALAND**  
[www.australianmonitor.com.au](http://www.australianmonitor.com.au)