

LED Linkable Cabinet Light

Linkable LED light available in 13.5W models



Series Highlights

- Easily connect multiple LED linkable lights together.
- Available in cool and warm white colour temperatures.
- Frosted diffuser delivers soft light and removes LED glare.
- LED glare. Up to 10 years LED lifespan, with 8 hours/day use.

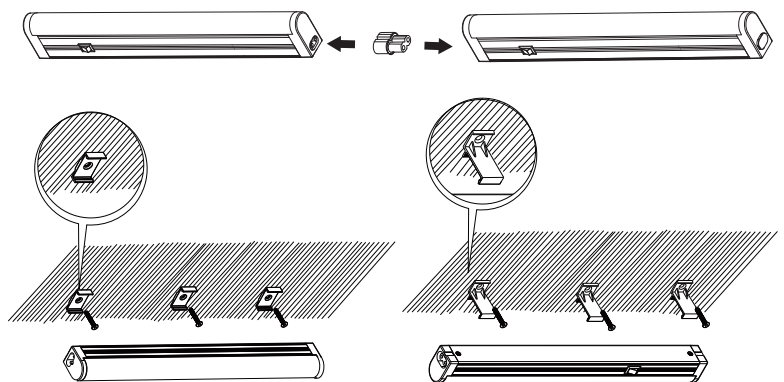
The ENSA™ LED linkable cabinet light range offers LED energy efficiency in a uniquely versatile, slim package. Connect multiple lights together and mount flat or at a right angle. The light is ideal for shelf and cabinet lighting, accent lighting, and strip lighting.

Light Specifications

	Model	LEDBR13WXK
Optical	Luminous Flux	1050 lumens
	Luminous Efficiency	78lm/W
	Colour Temperature	3000K / 6500K
	Colour Rendering Index	Ra >80
	Beam Angle	135°
	Light Decay	<10% after 6,000 hours
	Rated Lifespan	30,000 hours
Electrical	LED Power Consumption	13.5W
	Input Voltage	220-240VAC 50~60Hz
	Dimmable	No
	Plug / Socket / Base	Standard Power Plug
General	Reflector / Diffuser	Frosted
	Housing Adjustments	Surface clips, L-shape clips / Strip connectors
	Operating Environment	-25° ~ +40°C
	Dimensions	1170 x 25 x 35mm
	Equivalent Wattage	50W halogen

Product Diagrams

The ENSA™ LED linkable cabinet light comes standard with light connectors, connector caps and standard shape/L-shape mounting clips, allowing you to implement the linkable light across a wide variety of applications.



* LED lifespan is based on usage of 8 hours per day.



Your local ENSA™ LED lighting professional: