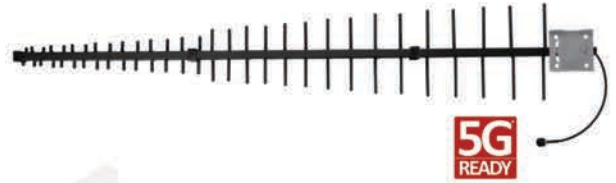


# Blackhawk LPDA Antenna (ANT-BH-YG-LOG-LPDA)

698-4000MHz 12/14dBi

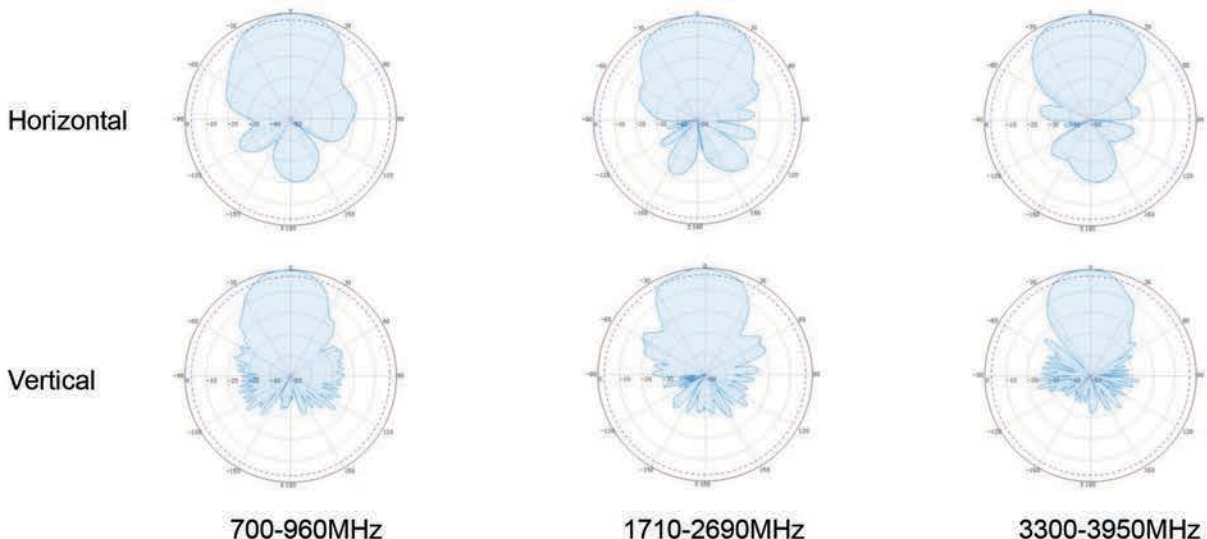


## Electrical Specifications

Frequency Range	698-960 MHz	1710-2700 MHz	3300-4000 MHz
Gain	12 dBi	14 dBi	12 dBi
VSWR	≤2.5	≤2.0	≤2.0
Polarization	Vertical		
Front to Back Ratio	≥24 dB	≥24 dB	≥13 dB
Horizontal Beamwidth	55°	42°	36°
Vertical Beamwidth	46°	34°	32°
Input Impedance	50 Ω		
Max. Input Power	50 W		
Lightning Protection	DC Ground		

## Mechanical Specifications

Connector	N-Female
Dimensions	1280 mm
Weight	1.6 kg
Reflector Material	Aluminum
Rated Wind Velocity	210 km/h
Operating Temperature	-40°C to +65 °C
Mounting Pole	Ø38-Ø52 mm



700-960MHz

1710-2690MHz

3300-3950MHz

ABN: 42 082 948 463

Telephone: 1300 769 378  
Telephone: +61 7 5577 0500

Email: sales@powertec.com.au  
Website: www.powertec.com.au

16/511 Olsen Avenue  
Southport QLD 4215  
Australia