



Contents

• Chogori Mini Series	2
• Chogori 500 Series	3
• Chogori Standard Series	4
• Chogori Middle Series	8
• Chogori Middle Series	12
• Chogori Large Series	14
• Chogori RJ45 Series	17
• Chogori USB Series	18
• Chogori D-Sub Series	18



RJ45 USB D-Sub Series



CHOGORI[®]

Waterproof Connectors

CHOGORI® Waterproof Connectors

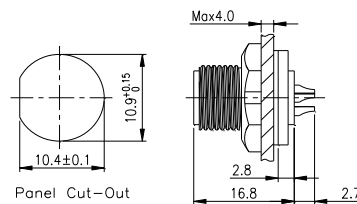


□ Chogori Mini Series

MINI SERIES SOCKET SCREW

FRONT PANEL MOUNT - MALE PINS

Mini series waterproof connector with high quality materials to meet different requirements of various environments. Its plastic material used is high performance PA66. Male pins used is excellent mechanical properties of phosphor bronze assembly with good electrical conductivity brass. Mini series connector has good performance with waterproof rating of IP68.

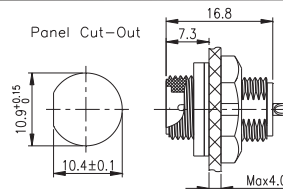


Contact	Wire Gauge	Panel Thickness	Hole	IP	Operating Temperature	Voltage Rating	Rated Current	Chogori Cat Page	Code
3	20AWG	Max. 4.0mm	11mmØ	IP67/IP68	-45 ~ +105	110V	5A	26	21003515-01
4	20AWG	Max. 4.0mm	11mmØ	IP67/IP68	-45 ~ +105	110V	5A	26	21004515-01
5	22AWG	Max. 4.0mm	11mmØ	IP67/IP68	-45 ~ +105	50V	2A	26	21005515-01
6	22AWG	Max. 4.0mm	11mmØ	IP67/IP68	-45 ~ +105	50V	2A	26	21006515-01
2+4	22AWG	Max. 4.0mm	11mmØ	IP67/IP68	-45 ~ +105	50V	5A+2A	26	21204515-01

MINI SERIES SOCKET SCREW

REAR PANEL MOUNT - MALE PINS

Mini series waterproof connector with high quality materials to meet different requirements of various environments. Its plastic material used is high performance PA66. Male pins used is excellent mechanical properties of phosphor bronze assembly with good electrical conductivity brass. Mini series connector has a good performance with waterproof rating of IP68.

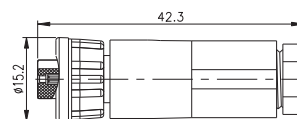


Contact	Wire Gauge	Panel Thickness	Hole	IP	Operating Temperature	Voltage Rating	Rated Current	Chogori Cat Page	Code
2	0.519mm ²	Max. 4.0mm	11mmØ	IP67/68	-45 ~ +105	110V	5A	28	21002515-03
3	0.519mm ²	Max. 4.0mm	11mmØ	IP67/68	-45 ~ +105	110V	5A	28	21003515-03
4	0.519mm ²	Max. 4.0mm	11mmØ	IP67/68	-45 ~ +105	110V	5A	28	21004515-03
5	0.34mm ²	Max. 4.0mm	11mmØ	IP67/68	-45 ~ +105	50V	2A	28	21005515-03
6	0.34mm ²	Max. 4.0mm	11mmØ	IP67/68	-45 ~ +105	50V	2A	28	21006515-03

MINI SERIES PLUG SCREW

MALE SCREW - FEMALE PINS

Mini series waterproof connector with high quality materials to meet different requirements of various environments. Its plastic material used is high performance PA66. Male pins used is excellent mechanical properties of phosphor bronze assembly with good electrical conductivity brass. Its superior mechanical properties ensure long effective application and good performance with 5 seal structure making its waterproof rating reach IP68 standards.



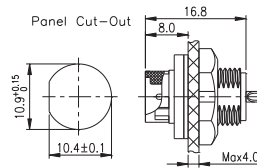
Contact	Wire Gauge	Cable Range	Size	IP	Operating Temperature	Voltage Rating	Rated Current	Chogori Cat Page	Code
2	0.519mm ²	3.5-6.8	42x14mmØ	IP68	-45 ~ +105	110V	5A	29	21002211-01
3	0.519mm ²	3.5-6.8	42x14mmØ	IP68	-45 ~ +105	110V	5A	29	21003211-01
4(5A)	0.519mm ²	3.5-6.8	42x14mmØ	IP68	-45 ~ +105	110V	5A	29	21004211-01
5	0.34mm ²	3.5-6.8	42x14mmØ	IP68	-45 ~ +105	50V	2A	29	21005211-01
6	0.34mm ²	3.5-6.8	42x14mmØ	IP68	-45 ~ +105	50V	2A	29	21006211-01
2+4	0.34mm ²	3.5-6.8	42x14mmØ	IP68	-45 ~ +105	50V	5A+2A	29	21204211-01



MINI SERIES SOCKET BAYONET

REAR PANEL MOUNT - MALE PINS

Mini series waterproof connector with high performance PA66. Male pins use phosphor bronze assembly with high conductivity brass. Mini series connector has a good performance with IP67 waterproof rating, thus it is ideal for indoor and outdoor harsh working environments.

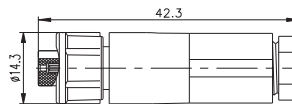


Contact	Wire Gauge	Panel Thickness	Hole	IP	Operating Temperature	Voltage Rating	Rated Current	Chogori Cat Page	Code
2	0.519mm ²	Max. 4.0mm	10.4mmØ	IP67	-45 ~ +105	110V	5A	28	21002525-03
3	0.519mm ²	Max. 4.0mm	10.4mmØ	IP67	-45 ~ +105	110V	5A	28	21003525-03
4(5A)	0.519mm ²	Max. 4.0mm	10.4mmØ	IP67	-45 ~ +105	110V	5A	28	21004525-03
4(2A)	0.34mm ²	Max. 4.0mm	10.4mmØ	IP67	-45 ~ +105	50V	2A	28	21004525-04
5	0.34mm ²	Max. 4.0mm	10.4mmØ	IP67	-45 ~ +105	50V	2A	28	21005525-03
6	0.34mm ²	Max. 4.0mm	10.4mmØ	IP67	-45 ~ +105	50V	2A	28	21006525-03
2+4	0.34mm ²	Max. 4.0mm	10.4mmØ	IP67	-45 ~ +105	50V	5A+2A	28	21204525-03

MINI SERIES PLUG BAYONET

MALE BAYONET - FEMALE PINS

Mini series waterproof connector manufactured with high performance PA66. Contact is lathed and milled of two solid brass rods, reeds are stamped of beryllium copper with surface gold-plated with 4u"-20u". Mini series has a good performance with 5 seal structure making its waterproof rating IP68 making it suitable for harsh environments.



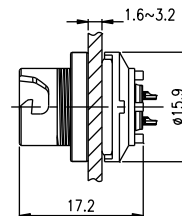
Contact	Wire Gauge	Cable Range	IP	Hole	Operating Temperature	Voltage Rating	Rated Current	Chogori Cat Page	Code
2	0.519mm ²	3.5-6.8	IP67	10.4mmØ	-45 ~ +105	110V	5A	29	21002221-01
3	0.519mm ²	3.5-6.8	IP67	10.4mmØ	-45 ~ +105	110V	5A	29	21003221-01
4(5A)	0.519mm ²	3.5-6.8	IP67	10.4mmØ	-45 ~ +105	110V	5A	29	21004221-01
4(2A)	0.34mm ²	3.5-6.8	IP67	10.4mmØ	-45 ~ +105	50V	2A	29	21004221-02
6	0.34mm ²	3.5-6.8	IP67	10.4mmØ	-45 ~ +105	50V	2A	29	21006221-01
2+4	0.34mm ²	3.5-6.8	IP67	10.4mmØ	-45 ~ +105	50V	5A+2A	29	21204221-01

Chogori 500 Series

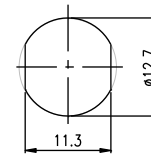
500 SERIES SOCKET - PUSH LOCK

FRONT PANEL MOUNT - FEMALE PINS

500 series waterproof connector is manufactured with high quality materials to meet different requirements of various environments. Its plastic material used is high performance PA66. Female contacts are lathed and milled of two solid brass rods and reeds are stamped of beryllium copper. Terminals' surfaces are gold-plated with 4u"-20u". Superior mechanical properties ensure long effective application with insert and withdraw lifetime up to 3000 times. 500 series connector has a good performance is ideal for harsh working environments.



Panel Cut-Out

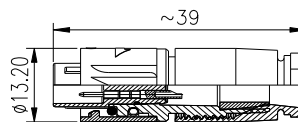


Contact	Wire Gauge	Cable	Panel Thickness	Hole	IP	Operating Temperature	Voltage Rating	Rated Current	Chogori Cat Page	Code
2	0.34mm ²	22AWG	1.6 - 3.2mm	12.7mmØ	IP65/IP67	-45 ~ +105	110V	2A	21	11002635-01
3	0.34mm ²	22AWG	1.6 - 3.2mm	12.7mmØ	IP65/IP67	-45 ~ +105	110V	2A	21	11003635-01
4	0.34mm ²	22AWG	1.6 - 3.2mm	12.7mmØ	IP65/IP67	-45 ~ +105	110V	2A	21	11004635-01
5	0.34mm ²	22AWG	1.6 - 3.2mm	12.7mmØ	IP65/IP67	-45 ~ +105	60V	2A	21	11005635-01
6	0.34mm ²	22AWG	1.6 - 3.2mm	12.7mmØ	IP65/IP67	-45 ~ +105	60V	2A	21	11006635-01

500 SERIES PLUG - PUSH LOCK

MALE PUSH LOCK - MALE PINS

500 series waterproof connector is manufactured with high quality materials to meet different requirements of various environments. Its plastic material is high performance PA66. Male pins are phosphor bronze assembly with good electrical conductivity brass. Terminal surfaces are gold-plated with 4u"-20u". Superior mechanical properties ensure long effective application with insert and withdraw lifetime up to 3000 times. 500 series connector has a good performance with a 5 seal structure making its waterproof rating reach IP68 standard.



Contact	Wire Gauge	Cable	Cable Range	Size	IP	Operating Temperature	Voltage Rating	Rated Current	Chogori Cat Page	Code
2	0.34mm ²	22AWG	2.9-6.3	39x13mmØ	IP65/IP67	-45 ~ +105	110V	2A	22	11002131-01
3	0.34mm ²	22AWG	2.9-6.3	39x13mmØ	IP65/IP67	-45 ~ +105	110V	2A	22	11003131-01
4	0.34mm ²	22AWG	2.9-6.3	39x13mmØ	IP65/IP67	-45 ~ +105	110V	2A	22	11004131-01
5	0.34mm ²	22AWG	2.9-6.3	39x13mmØ	IP65/IP67	-45 ~ +105	60V	2A	22	11005131-01
6	0.34mm ²	22AWG	2.9-6.3	39x13mmØ	IP65/IP67	-45 ~ +105	60V	2A	22	11006131-01

Chogori Standard Series

Field Installable 180° Solder Screw Types

MEDIUM SIZED PLUG & SOCKET SYSTEM

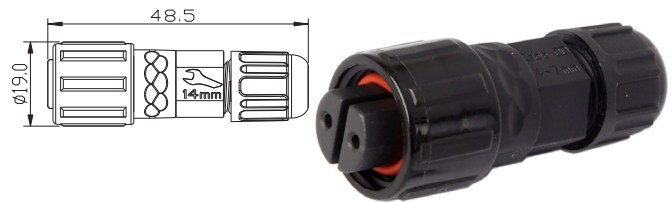
- Standard circular connectors from Chogori. Field installable. Solder pins.
- Designed to withstand harsh industrial and climatic environment, its superior quality ensures reliable connection for the higher standards and reliability of industrial machinery and equipment, marine electronics, LED display of power and signal control components, etc.
- This high quality connector can insert and withdraw simply and quickly. Addition to the lock bayonet and screw type docking type, the push-locking connection can also be simple and fast plug in and out.
- Pins from 2 to 12 can satisfy the various requirements of different customers.
- All the products are manufactured with high quality materials to meet the various requirements of different environments, the plastic material used is high performance PA66. Male pins used is excellent mechanical properties of phosphor bronze assembly with good electrical conductivity brass. The contact surface is gold-plated with 4u"-20u"
- Superior mechanical properties ensure long effective application with insert and extract lifetime up to 3000 times.
- Good performance in waterproof, 5 sealing structure making its ingress rating reach IP68 standards.



STANDARD SERIES PLUG SCREW

MALE SCREW - FEMALE PINS

Standard circular connectors. Field installable. Solder pins. Screw type plug secure system. Designed to withstand harsh industrial and climatic environment, its superior quality ensures reliable connection for the higher standards and reliability of industrial machinery and equipment, marine electronics, LED display of power and signal control components, etc. Gold-plated with 4u"-20u", its superior mechanical properties ensure long effective application with insert and extract lifetime up to 3000 times. Good performance in waterproof, 5 sealing structure making its ingress rating reach IP68 standards.

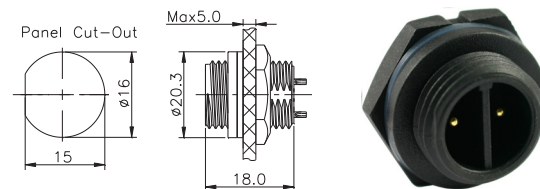


Contact	Wire Gauge	Cable	Cable Range	Size	IP	Operating Temperature	Voltage Rating	Rated Current	Chogori Cat Page	Code
2	0.823mm ²	18AWG	3.5-6.8	48x19mmØ	IP68	-45 ~ +105	300V	10A	44	22002211-01
3	0.823mm ²	18AWG	3.5-6.8	48x19mmØ	IP68	-45 ~ +105	300V	10A	44	22003211-01
5	0.519mm ²	20AWG	3.5-6.8	48x19mmØ	IP68	-45 ~ +105	60V	5A	44	22005211-01
6	0.519mm ²	20AWG	3.5-6.8	48x19mmØ	IP68	-45 ~ +105	60V	5A	44	22006211-01
2+4	0.823mm ² *2C + 0.519mm ² *4C	18AWG*2C + 20AWG*4C	3.5-6.8	48x19mmØ	IP68	-45 ~ +105	60V	10A+5A	44	22204211-01
3+4	0.823mm ² *3C + 0.519mm ² *4C	18AWG*3C + 20AWG*4C	3.5-6.8	48x19mmØ	IP68	-45 ~ +105	60V	10A+2A	44	22304211-01
8	0.519mm ²	20AWG	3.5-6.8	48x19mmØ	IP68	-45 ~ +105	60V	5A	44	22008211-01

STANDARD SERIES SOCKET SCREW

REAR PANEL MOUNT - MALE PINS

Standard circular connectors. Field installable. Solder pins. Screw type plug secure system. Plastic material used is high performance PA66, male pins used is excellent mechanical properties of phosphor bronze assembly with good electrical conductivity brass. The contact surface is gold-plated with 4u"-20u", its superior mechanical properties ensure long effective application with insert and extract lifetime up to 3000 times. Good performance in waterproof, 5 sealing structure making its ingress rating reach IP68 standards.



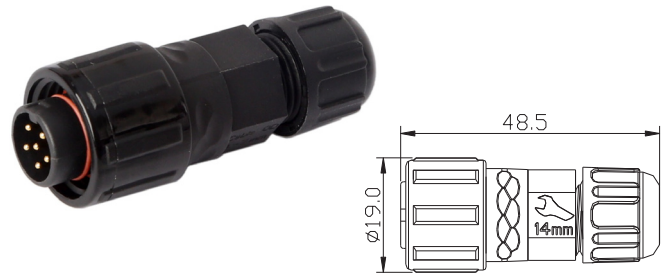
Contact	Wire Gauge	Panel Thickness	Hole	IP	Operating Temperature	Voltage Rating	Rated Current	Chogori Cat Page	Code
2	0.823mm ²	Max. 5.0mm	16mmØ	IP68	-45 ~ +105	300V	10A	43	22002515-03
3	0.823mm ²	Max. 5.0mm	16mmØ	IP68	-45 ~ +105	300V	10A	43	22003515-03
5	0.519mm ²	Max. 5.0mm	16mmØ	IP68	-45 ~ +105	60V	5A	43	22005515-03
6	0.519mm ²	Max. 5.0mm	16mmØ	IP68	-45 ~ +105	60V	5A	43	22006515-03
2+4	0.823mm ² *2C + 0.519mm ² *4C	Max. 5.0mm	16mmØ	IP68	-45 ~ +105	60V	10A+5A	43	22204515-03
3+4	0.823mm ² *3C + 0.519mm ² *4C	Max. 5.0mm	16mmØ	IP68	-45 ~ +105	60V	10A+2A	43	22304515-03
8	0.519mm ²	Max. 5.0mm	16mmØ	IP68	-45 ~ +105	60V	5A	43	22008515-03



STANDARD SERIES PLUG SCREW

MALE SCREW - MALE PINS

Standard circular connectors. Field installable. Solder pins. Screw type plug secure system. Designed to withstand harsh industrial and climatic environment, its superior quality ensures reliable connection for the higher standards and reliability of industrial machinery, marine electronics, power and signal control components, etc. Plastic material used is high performance PA66,. Male pins used is excellent mechanical properties of phosphor bronze assembly with good electrical conductivity brass. The contact surface is gold-plated with 4u"-20u", its superior mechanical properties ensure long effective application with insert and extract lifetime up to 3000 times.

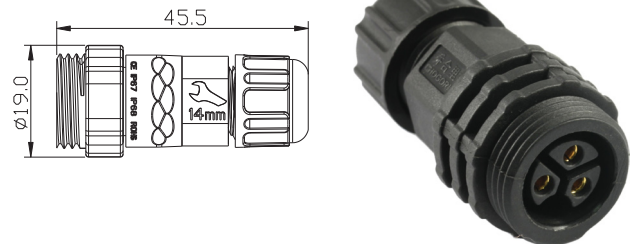


Contact	Wire Gauge	Cable	Cable Range	Size	IP	Operating Temperature	Voltage Rating	Rated Current	Chogori Cat Page	Code
2	0.823mm ²	18AWG	3.5-6.8	48x19mmØ	IP68	-45 ~ +105	300V	10A	50	22002111-01
3	0.823mm ²	18AWG	3.5-6.8	48x19mmØ	IP68	-45 ~ +105	300V	10A	50	22003111-01
4	0.823mm ²	18AWG	3.5-6.8	48x19mmØ	IP68	-45 ~ +105	125V	10A	50	22004111-01
5	0.519mm ²	20AWG	3.5-6.8	48x19mmØ	IP68	-45 ~ +105	60V	5A	50	22005111-01
6	0.519mm ²	20AWG	3.5-6.8	48x19mmØ	IP68	-45 ~ +105	60V	5A	50	22006111-01
2+4	0.823mm ² *2C + 0.519mm ² *4C	18AWG*2C + 20AWG*4C	3.5-6.8	48x19mmØ	IP68	-45 ~ +105	60V	10A+2A	50	22204111-01
2+6	0.519mm ² *2C + 0.34mm ² *6C	20AWG*2C + 22AWG*6C	3.5-6.8	48x19mmØ	IP68	-45 ~ +105	30V	5A+2A	50	22206111-01

STANDARD SERIES INLINE PLUG SCREW

FEMALE SCREW - FEMALE PINS

Standard circular connectors. Field installable. Solder pins. Screw type plug secure system. This high quality connector can insert and withdraw simply and quickly. All the products are manufactured with high quality materials to meet the various requirements of different environments, the plastic material used is high performance PA66. The contact surface is gold-plated with 4u"-20u", its superior mechanical properties ensure long effective application with insert and extract lifetime up to 3000 times. Good performance in waterproof.

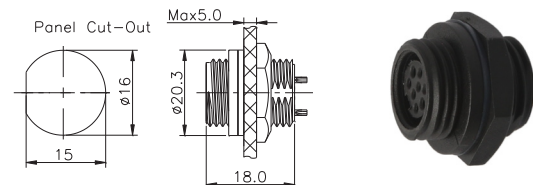


Contact	Wire Gauge	Cable	Cable Range	Size	IP	Operating Temperature	Voltage Rating	Rated Current	Chogori Cat Page	Code
4	0.823mm ²	18AWG	3.5-6.8	46x19mmØ	IP68	-45 ~ +105	125V	10A	55	22004411-01
6	0.519mm ²	20AWG	3.5-6.8	46x19mmØ	IP68	-45 ~ +105	60V	5A	55	22006411-01
2+6	0.519mm ² *2C + 0.34mm ² *6C	20AWG*2C + 22AWG*6C	3.5-6.8	46x19mmØ	IP68	-45 ~ +105	30V	5A+2A	55	22206411-01

STANDARD SERIES SOCKET SCREW

REAR PANEL MOUNT - FEMALE PINS

Standard circular connectors. Field installable. Solder pins. Screw type plug secure system. All the products are manufactured with high quality materials to meet the various requirements of different environments, the plastic material used is high performance PA66. The contact surface is gold-plated with 4u"-20u", its superior mechanical properties ensure long effective application with insert and extract lifetime up to 3000 times. Good performance in waterproof.



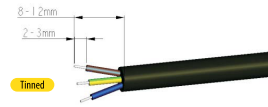
Contact	Wire Gauge	Panel Thickness	Hole	IP	Operating Temperature	Voltage Rating	Rated Current	Chogori Cat Page	Code
2	0.823mm ²	Max. 5.0mm	16mmØ	IP68	-45 ~ +105	300V	10A	49	22002615-03
3	0.823mm ²	Max. 5.0mm	16mmØ	IP68	-45 ~ +105	300V	10A	49	22003615-03
4	0.823mm ²	Max. 5.0mm	16mmØ	IP68	-45 ~ +105	125V	10A	49	22004615-03
5	0.519mm ²	Max. 5.0mm	16mmØ	IP68	-45 ~ +105	60V	5A	49	22005615-03
6	0.519mm ²	Max. 5.0mm	16mmØ	IP68	-45 ~ +105	60V	5A	49	22006615-03
2+4	0.823mm ² *2C + 0.519mm ² *4C	Max. 5.0mm	16mmØ	IP68	-45 ~ +105	60V	10A+2A	49	22204615-03
2+6	0.519mm ² *2C + 0.34mm ² *6C	Max. 5.5mm	16mmØ	IP68	-45 ~ +105	30V	5A+2A	49	22206615-03

STANDARD SERIES PUSH LOCK

PUSH LOCK SYSTEM FOR SECURE AND FAST CONNECTION

- Standard circular connectors from Chogori. Field installable. Solder pins.
- Designed to withstand harsh industrial and climatic environment, its superior quality ensures reliable connection for the higher standards and reliability of industrial machinery and equipment, marine electronics, LED display of power and signal control components, etc.
- This high quality connector can insert and withdraw simply and quickly. Addition to the lock bayonet and screw type docking type, the push-locking connection can also be simple and fast plug in and out.
- Pins from 2 to 12 can satisfy the various requirements of different customers.
- All the products are manufactured with high quality materials to meet the various requirements of different environments, the plastic material used is high performance PA66. Male pins used is excellent mechanical properties of phosphor bronze assembly with good electrical conductivity brass. The contact surface is gold-plated with 4u"-20u"
- Superior mechanical properties ensure long effective application with insert and extract lifetime up to 3000 times.
- Good performance in waterproof, 5 sealing structure making its ingress rating reach IP68 standards.

Strip and prepare Cable.



Thread Seals Nut, Seals Ring, Clamp Ring and Gasket onto the cable.



Solder wire



Put Seals Ring to the end of Clamp Ring



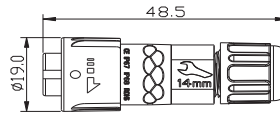
Assemble Seals Nut and Clamp Ring.



STANDARD SERIES PLUG PUSH LOCK

MALE PUSH LOCK - FEMALE PINS

Standard circular connectors. Field installable. Solder pins. Push Lock type plug secure system. Designed to withstand harsh industrial and climatic environment, its superior quality ensures reliable connection for the higher standards and reliability. The plastic material used is high performance PA66. The contact surface is gold-plated. Its superior mechanical properties ensure long effective application with insert and extract lifetime up to 3000 times. Good performance in waterproof ingress rating of up to IP68 standards.

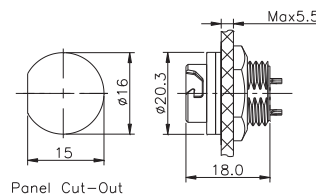


Contact	Wire Gauge	Cable	Cable Range	Size	IP	Operating Temperature	Voltage Rating	Rated Current	Chogori Cat Page	Code
2	0.823mm ²	18AWG	3.5-6.8	48x19mmØ	IP67	-45 ~ +105	300V	10A	44	22002231-01
3	0.823mm ²	18AWG	3.5-6.8	48x19mmØ	IP67	-45 ~ +105	300V	10A	44	22003231-01
4	0.823mm ²	18AWG	3.5-6.8	48x19mmØ	IP67	-45 ~ +105	125V	10A	44	22004231-01
5	0.519mm ²	20AWG	3.5-6.8	48x19mmØ	IP67	-45 ~ +105	60V	5A	44	22005231-01
6	0.519mm ²	20AWG	3.5-6.8	48x19mmØ	IP67	-45 ~ +105	60V	5A	44	22006231-01
2+4	0.823mm ² *2C + 0.519mm ² *4C	18AWG*2C + 20AWG*4C	3.5-6.8	48x19mmØ	IP67	-45 ~ +105	60V	10A+5A	44	22204231-01
3+4	0.823mm ² *3C + 0.519mm ² *4C	18AWG*3C + 20AWG*4C	3.5-6.8	48x19mmØ	IP67	-45 ~ +105	60V	10A+2A	44	22304231-01
8	0.519mm ²	20AWG	3.5-6.8	48x19mmØ	IP67	-45 ~ +105	60V	5A	44	22008231-01

STANDARD SERIES SOCKET PUSH LOCK

REAR PANEL MOUNT - MALE PINS

Standard circular connectors. Field installable. Solder pins. Push Lock type plug secure system. This high quality connector can insert and withdraw simply and quickly. All the products are manufactured with high quality materials to meet the various requirements of different environments, the plastic material used is high performance PA66. Male pins used is excellent mechanical properties of phosphor bronze assembly with good electrical conductivity brass. The contact surface is gold-plated with 4u"-20u". Good performance in waterproof.



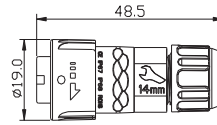
Contact	Wire Gauge	Cable	Panel Thickness	Hole	IP	Operating Temperature	Voltage Rating	Rated Current	Chogori Cat Page	Code
2	0.823mm ²	18AWG	Max. 5.0mm	16mmØ	IP67	-45 ~ +105	300V	10A	43	22002535-03
3	0.823mm ²	18AWG	Max. 5.0mm	16mmØ	IP67	-45 ~ +105	300V	10A	43	22003535-03
4	0.823mm ²	18AWG	Max. 5.0mm	16mmØ	IP67	-45 ~ +105	125V	10A	43	22004535-03
5	0.519mm ²	20AWG	Max. 5.0mm	16mmØ	IP67	-45 ~ +105	60V	5A	43	22005535-03
6	0.519mm ²	20AWG	Max. 5.0mm	16mmØ	IP67	-45 ~ +105	60V	5A	43	22006535-03
2+4	0.823mm ² *2C + 0.519mm ² *4C	18AWG*2C + 20AWG*4C	Max. 5.0mm	16mmØ	IP67	-45 ~ +105	60V	10A+5A	43	22204535-03
8	0.519mm ²	20AWG	Max. 5.5mm	16mmØ	IP67	-45 ~ +105	60V	5A	43	22008535-03



STANDARD SERIES PLUG PUSH LOCK

MALE PUSH LOCK - MALE PINS

Blue capped indicates Push Lock gender not compatible with yellow. Standard circular connectors. Field installable. Solder pins. Push Lock type plug secure system. Designed to withstand harsh industrial and climatic environment. This high quality connector can insert and withdraw simply and quickly. All the products are manufactured with high quality materials to meet the various requirements of different environments, the plastic material used is high performance PA66, male pins used is excellent mechanical properties of phosphor bronze assembly with good electrical conductivity brass. The contact surface is gold-plated with 4u"-20u".

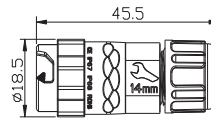


Contact	Wire Gauge	Cable	Cable Range	Size	IP	Operating Temperature	Voltage Rating	Rated Current	Chogori Cat Page	Code
2	0.823mm ²	18AWG	3.5-6.8	48x19mmØ	IP67	-45 ~ +105	300V	10A	50	22002131-01
3	0.823mm ²	18AWG	3.5-6.8	48x19mmØ	IP67	-45 ~ +105	300V	10A	50	22003131-01
4	0.823mm ²	18AWG	3.5-6.8	48x19mmØ	IP67	-45 ~ +105	125V	10A	50	22004131-01
5	0.519mm ²	20AWG	3.5-6.8	48x19mmØ	IP67	-45 ~ +105	60V	5A	50	22005131-01
6	0.519mm ²	20AWG	3.5-6.8	48x19mmØ	IP67	-45 ~ +105	60V	5A	50	22006131-01
2+4	0.823mm ² *2C + 0.519mm ² *4C	18AWG*2C + 20AWG*4C	3.5-6.8	48x19mmØ	IP67	-45 ~ +105	60V	10A+2A	50	22204131-01
2+6	0.519mm ² *2C + 0.34mm ² *6C	20AWG*2C + 22AWG*6C	3.5-6.8	48x19mmØ	IP67	-45 ~ +105	30V	5A+2A	50	22206131-01

STANDARD SERIES INLINE PLUG PUSH LOCK

FEMALE PUSH LOCK - FEMALE PINS

Standard circular connectors. Field installable. Solder pins. Push Lock type plug secure system. All the products are manufactured with high quality materials to meet the various requirements of different environments, the plastic material used is high performance PA66. The contact surface is gold-plated with 4u"-20u", its superior mechanical properties ensure long effective application with insert and extract lifetime up to 3000 times. Good performance in waterproof sealing structure making its ingress rating reach up to IP67 standards.

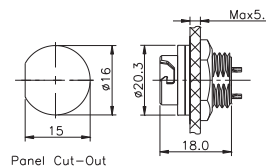


Contact	Wire Gauge	Cable	Cable Range	Size	IP	Operating Temperature	Voltage Rating	Rated Current	Chogori Cat Page	Code
2	0.823mm ²	18AWG	3.5-6.8	46x19mmØ	IP67	-45 ~ +105	300V	10A	55	22002431-01
4	0.823mm ²	18AWG	3.5-6.8	46x19mmØ	IP67	-45 ~ +105	125V	10A	55	22004431-01
5	0.519mm ²	20AWG	3.5-6.8	46x19mmØ	IP67	-45 ~ +105	60V	5A	55	22005431-01
2+6	0.519mm ² *2C + 0.34mm ² *6C	20AWG*2C + 22AWG*6C	3.5-6.8	46x19mmØ	IP67	-45 ~ +105	30V	5A+2A	55	22206431-01

STANDARD SERIES SOCKET PUSH LOCK

REAR PANEL MOUNT - FEMALE PINS

Blue capped indicates Push Lock gender not compatible with yellow. Standard circular connectors. Field installable. Solder pins. Push Lock type plug secure system. Designed to withstand harsh industrial and climatic environment. This high quality connector can insert and withdraw simply and quickly. The plastic material used is high performance PA66. The contact surface is gold-plated with 4u"-20u", its superior mechanical properties ensure long effective application with insert and extract lifetime up to 3000 times. Good performance in waterproof, 5 sealing structure making its ingress rating reach up to IP67 standards.



Contact	Wire Gauge	Panel Thickness	Hole	IP	Operating Temperature	Voltage Rating	Rated Current	Chogori Cat Page	Code
2	0.823mm ²	Max. 5.0mm	16mmØ	IP67	-45 ~ +105	300V	10A	49	22002635-03
3	0.823mm ²	Max. 5.0mm	16mmØ	IP67	-45 ~ +105	300V	10A	49	22003635-03
4	0.823mm ²	Max. 5.0mm	16mmØ	IP67	-45 ~ +105	125V	10A	49	22004635-03
5	0.519mm ²	Max. 5.0mm	16mmØ	IP67	-45 ~ +105	60V	5A	49	22005635-03
6	0.519mm ²	Max. 5.0mm	16mmØ	IP67	-45 ~ +105	60V	5A	49	22006635-03
2+4	0.823mm ² *2C + 0.519mm ² *4C	Max. 5.5mm	16mmØ	IP67	-45 ~ +105	60V	10A+2A	49	22204635-03



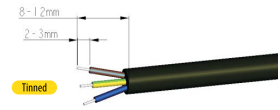
Chogori Middle Series

MIDDLE SERIES SCREW

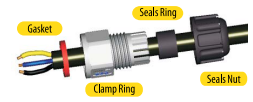
SCREW TYPE FOR EXCELLENT WEATHER PROOFING

- The Middle Series Connector is designed for application in harsh industrial and climatic environments. Its superior quality can ensure a reliable connection for industrial machinery and equipment, marine electronics, power and signal control elements, etc.
- The Middle Series Connector products are manufactured with high quality materials to meet the various requirements of different environments. The plastic material used is high performance PA66. Copper pins used have the excellent mechanical properties of a phosphor bronze assembly with the good electrical conductivity of brass. The connector can insert and extract up to 3000 times or more.
- The Middle Series Connectors have good performance in waterproofing, their rating can reach IP67 and IP68 standards, thus are ideal for indoor and outdoor harsh working environments.
- The Middle Series Connectors are a professional, neat and functional solution available in screw plug or quick push lock types.
- Larger plugs allow higher wattage transfer up to 20A x 300V.
- Larger plugs give positive action when in outdoor environments.

Strip and prepare Cable.



Thread Seals Nut, Seals Ring, Clamp Ring and Gasket onto the cable.



Solder wire.



Put Seals Ring to the end of Clamp Ring.



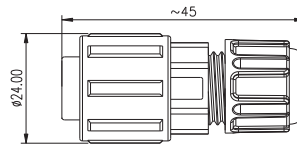
Assemble Seals Nut and Clamp Ring.



MIDDLE SERIES PLUG SCREW

FEMALE SOCKET

Middle connector is designed to apply in harsh industrial and climatic environment, its superior quality can ensure a reliable connection for industrial machinery and equipment, marine electronics, LED screen power and signal control elements. Manufactured with high quality materials to meet the various requirements of different environments, the plastic material used is high performance PA66. Middle type connector has a good performance in waterproof, its waterproof rating can reach IP68 standards, thus it is ideal for indoor and outdoor harsh working environments.

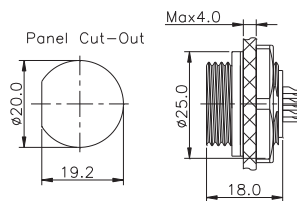


Contact	Wire Gauge	Cable	Cable Range	Size	IP	Operating Temperature	Voltage Rating	Rated Current	Chogori Cat Page	Code
2	2.5mm ²	14AWG	6.5-9.5	45x24mmØ	IP68	-45 ~ +105	300V	20A	63	23002211-02
3	2.5mm ²	14AWG	6.5-9.5	45x24mmØ	IP68	-45 ~ +105	300V	20A	63	23003211-02
4	1.0mm ²	17AWG	6.5-9.5	45x24mmØ	IP68	-45 ~ +105	300V	15A	63	23004211-02
5	0.75mm ²	18AWG	6.5-9.5	45x24mmØ	IP68	-45 ~ +105	125V	10A	63	23005211-02
6	0.75mm ²	18AWG	6.5-9.5	45x24mmØ	IP68	-45 ~ +105	125V	10A	63	23006211-02
8	0.34mm ²	22AWG	6.5-9.5	45x24mmØ	IP68	-45 ~ +105	60V	5A	63	23008211-02
3+5	1.00mm ² *3C + 0.25mm ² *5C	17AWG *3C + 24AWG *5C	6.5-9.5	45x24mmØ	IP68	-45 ~ +105	125+30V	15A+2A	63	23305211-02

MIDDLE SERIES SOCKET SCREW

FEMALE SCREW TYPE REAR PANEL MOUNT - FEMALE PINS

Mounting screw is attached to the back of the chassis panel. Middle connector has superior quality to ensure a reliable connection. These products are manufactured with high quality materials to meet the various requirements of different environments, the plastic material used is high performance PA66, copper needles used have the excellent mechanical properties of phosphor bronze assembly with good electrical conductivity brass. Waterproof rating can reach IP68 standards, thus it is ideal for harsh working environments.



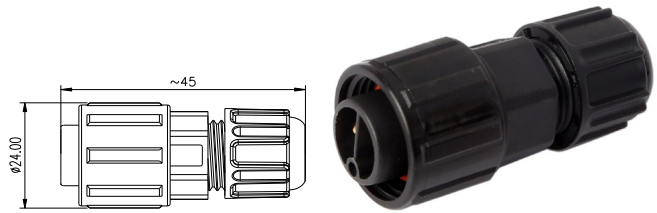
Contact	Wire Gauge	Cable	Panel Thickness	Hole	IP	Operating Temperature	Voltage Rating	Rated Current	Chogori Cat Page	Code
2	2.5mm ²	14AWG	Max. 4.0mm	20mmØ	IP68	-45 ~ +105	300V	20A	68	23002615-03
3	2.5mm ²	14AWG	Max. 4.0mm	20mmØ	IP68	-45 ~ +105	300V	20A	68	23003615-03
4	1.0mm ²	17AWG	Max. 4.0mm	20mmØ	IP68	-45 ~ +105	300V	15A	68	23004615-03
5	0.75mm ²	18AWG	Max. 4.0mm	20mmØ	IP68	-45 ~ +105	125V	10A	68	23005615-03
6	0.75mm ²	18AWG	Max. 4.0mm	20mmØ	IP68	-45 ~ +105	125V	10A	68	23006615-03
7	0.34mm ²	22AWG	Max. 4.0mm	20mmØ	IP68	-45 ~ +105	60V	5A	68	23007615-03
8	0.34mm ²	22AWG	Max. 4.0mm	20mmØ	IP68	-45 ~ +105	60V	5A	68	23008615-03
3+5	1.00mm ² *3C + 0.25mm ² *5C	17AWG *3C + 24AWG *5C	Max. 4.0mm	20mmØ	IP68	-45 ~ +105	125 + 30V	15A + 2A	68	23305615-03



MIDDLE SERIES PLUG SCREW

MALE PINS

All the Middle products are manufactured with high quality materials to meet the various requirements of different environments, the plastic material used is high performance PA66, copper needles used is excellent mechanical properties of phosphor bronze assembly with good electrical conductivity brass. Middle type connector has a good performance in waterproof, its waterproof rating can reach IP68 and IP68 standards, thus it is ideal for indoor and outdoor harsh working environments. The connector can insert / extract 3000 times or more.

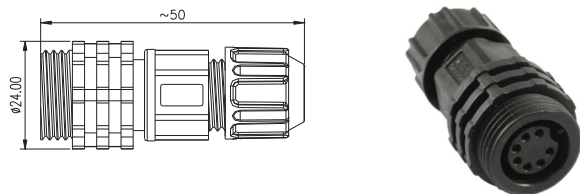


Contact	Wire Gauge	Cable	Cable Range	Size	IP	Operating Temperature	Voltage Rating	Rated Current	Chogori Cat Page	Code
2	2.5mm ²	14AWG	6.5-9.5	45x24mmØ	IP68	-45 ~ +105	300V	20A	69	23002111-02
3	2.5mm ²	14AWG	6.5-9.5	45x24mmØ	IP68	-45 ~ +105	300V	20A	69	23003111-02
4	1.0mm ²	17AWG	6.5-9.5	45x24mmØ	IP68	-45 ~ +105	300V	15A	69	23004111-02
5	0.75mm ²	18AWG	6.5-9.5	45x24mmØ	IP68	-45 ~ +105	125V	10A	69	23005111-02
6	0.75mm ²	18AWG	6.5-9.5	45x24mmØ	IP68	-45 ~ +105	125V	10A	69	23006111-02
7	0.34mm ²	22AWG	6.5-9.5	45x24mmØ	IP68	-45 ~ +105	60V	5A	69	23007111-02
8	0.34mm ²	22AWG	6.5-9.5	45x24mmØ	IP68	-45 ~ +105	60V	5A	69	23008111-02
3+5	1.00mm ² *3C + 0.25mm ² *5C	17AWG *3C + 24AWG *5C	6.5-9.5	45x24mmØ	IP68	-45 ~ +105	125 + 30V	15A + 2A	69	23305111-02

MIDDLE SERIES INLINE PLUG SCREW

FEMALE SCREW - FEMALE PINS

Middle connector is designed to apply in harsh industrial and climatic environment, its superior quality can ensure a reliable connection for industrial machinery and equipment, marine electronics, power and signal control elements, etc. All the Middle products are manufactured with high quality materials to meet the various requirements of different environments, the plastic material used is high performance PA66. Waterproof rating can reach IP68 standards, thus it is ideal for indoor and outdoor harsh working environments. The connector can insert and extract up to 3000 times or more.

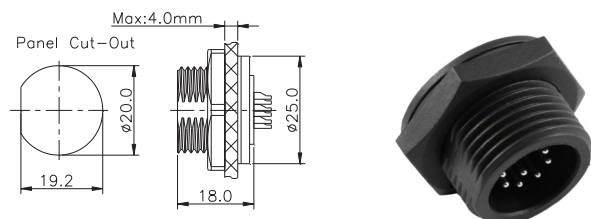


Contact	Wire Gauge	Cable	Cable Range	Size	IP	Operating Temperature	Voltage Rating	Rated Current	Chogori Cat Page	Code
2	2.5mm ²	14AWG	6.5-9.5	50x24mmØ	IP68	-45 ~ +105	300V	20A	74	23002411-02
3	2.5mm ²	14AWG	6.5-9.5	50x24mmØ	IP68	-45 ~ +105	300V	20A	74	23003411-02
4	1.0mm ²	17AWG	6.5-9.5	50x24mmØ	IP68	-45 ~ +105	300V	15A	74	23004411-02
5	0.75mm ²	18AWG	6.5-9.5	50x24mmØ	IP68	-45 ~ +105	125V	10A	74	23005411-02
6	0.75mm ²	18AWG	6.5-9.5	50x24mmØ	IP68	-45 ~ +105	125V	10A	74	23006411-02
7	0.34mm ²	22AWG	6.5-9.5	50x24mmØ	IP68	-45 ~ +105	60V	5A	74	23007411-02
3+5	1.00mm ² *3C + 0.25mm ² *5C	17AWG *3C + 24AWG *5C	6.5-9.5	50x24mmØ	IP68	-45 ~ +105	125 + 30V	15A + 2A	74	23305411-02

MIDDLE SERIES SOCKET SCREW

FRONT PANEL MOUNT - MALE PINS

Mounting screw is attached to the front of the chassis panel. All the Middle series products are manufactured with high quality materials to meet the various requirements of different environments, the plastic material used is high performance PA66, copper needles used is excellent mechanical properties of phosphor bronze assembly with good electrical conductivity brass. Middle type connector has a good performance in waterproofing, can reach IP68 standards, thus it is ideal for indoor and outdoor harsh working environments. The connector can insert / extract 3000 times or more.

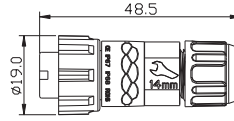


Contact	Wire Gauge	Panel Thickness	Hole	IP	Operating Temperature	Voltage Rating	Rated Current	Chogori Cat Page	Code
2	2.5mm ²	Max 4.0mm	20mmØ	IP68	-45 ~ +105	300V	20A	63	23002515-01
3	2.5mm ²	Max 4.0mm	20mmØ	IP68	-45 ~ +105	300V	20A	63	23003515-01
4	1.0mm ²	Max 4.0mm	20mmØ	IP68	-45 ~ +105	300V	15A	63	23004515-01
5	0.75mm ²	Max 4.0mm	20mmØ	IP68	-45 ~ +105	125V	10A	63	23005515-01
6	0.75mm ²	Max 4.0mm	20mmØ	IP68	-45 ~ +105	125V	10A	63	23006515-01
8	0.34mm ²	Max 4.0mm	20mmØ	IP68	-45 ~ +105	60V	5A	63	23008515-01

STANDARD SERIES PLUG LOCK BAYONET

MALE PINS

Standard circular connectors. Field installable. Solder pins. Lock bayonet type plug secure system. Designed to withstand harsh industrial and climatic environment, its superior quality ensures reliable connection for the higher standards and reliability of industrial machinery, marine electronics, power and signal control components, etc. Plastic material used is high performance PA66. Male pins used is excellent mechanical properties of phosphor bronze assembly with good electrical conductivity brass. The contact surface is gold-plated with 4u"-20u", its superior mechanical properties ensure long effective application with insert and extract lifetime up to 3000 times.

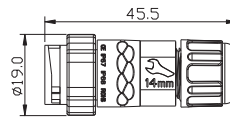


Contact	Wire Gauge	Cable	Cable Range	Size	IP	Operating Temperature	Voltage Rating	Rated Current	Chogori Cat Page	Code
2	0.823mm ²	18AWG	3.5mm-6.8mm	48x19mmØ	IP67	-45 ~ +105	300V	10A	50	22002121-01
3	0.823mm ²	18AWG	3.5mm-6.8mm	48x19mmØ	IP67	-45 ~ +105	300V	10A	50	22003121-01
4	0.823mm ²	18AWG	3.5mm-6.8mm	48x19mmØ	IP67	-45 ~ +105	125V	10A	50	22004121-01
5	0.519mm ²	20AWG	3.5mm-6.8mm	48x19mmØ	IP67	-45 ~ +105	60V	5A	50	22005121-01
6	0.519mm ²	20AWG	3.5mm-6.8mm	48x19mmØ	IP67	-45 ~ +105	60V	5A	50	22006121-01
2+4	0.823mm ² *2C + 0.519mm ² *4C	18AWG*2C + 20AWG*4C	3.5mm-6.8mm	48x19mmØ	IP67	-45 ~ +105	60V	10A+2A	50	22204121-01
2+6	0.519mm ² *2C + 0.34mm ² *6C	20AWG*2C + 22AWG*6C	3.5mm-6.8mm	48x19mmØ	IP67	-45 ~ +105	30V	5A+2A	50	22206121-01

STANDARD SERIES INLINE PLUG LOCK BAYONET

FEMALE SOCKET

Standard circular connectors. Field installable. Solder pins. Lock bayonet type plug secure system. Designed to withstand harsh industrial and climatic environment, its superior quality ensures reliable connection for the higher standards and reliability of industrial machinery, marine electronics, power and signal control components, etc. Plastic material used is high performance PA66. Male pins used is excellent mechanical properties of phosphor bronze assembly with good electrical conductivity brass. The contact surface is gold-plated with 4u"-20u", its superior mechanical properties ensure long effective application with insert and extract lifetime up to 3000 times.

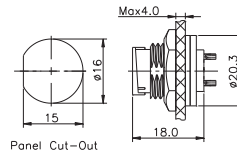


Contact	Wire Gauge	Cable	Cable Range	Size	IP	Operating Temperature	Voltage Rating	Rated Current	Chogori Cat Page	Code
2	0.823mm ²	18AWG	3.5-6.8mm	46x19mmØ	IP67	-45 ~ +105	300V	10A	55	22002421-01
3	0.823mm ²	18AWG	3.5-6.8mm	46x19mmØ	IP67	-45 ~ +105	300V	10A	55	22003421-01
4	0.823mm ²	18AWG	3.5-6.8mm	46x19mmØ	IP67	-45 ~ +105	125V	10A	55	22004421-01
5	0.519mm ²	20AWG	3.5-6.8mm	46x19mmØ	IP67	-45 ~ +105	60V	5A	55	22005421-01
6	0.519mm ²	20AWG	3.5-6.8mm	46x19mmØ	IP67	-45 ~ +105	60V	5A	55	22006421-01
2+4	0.823mm ² *2C + 0.519mm ²	18AWG*2C + 20AWG*4C	3.5-6.8mm	46x19mmØ	IP67	-45 ~ +105	60V	10A+2A	55	22204421-01
2+6	0.519mm ² *2C + 0.34mm ² *6C	20AWG*2C + 22AWG*6C	3.5-6.8mm	46x19mmØ	IP67	-45 ~ +105	30V	5A+2A	55	22206421-01

STANDARD SERIES FRONT PANEL LOCK BAYONET

FRONT PANEL MOUNT - FEMALE SOCKET

Standard circular connectors. Field installable. Solder pins. Lock bayonet type plug secure system. Designed to withstand harsh industrial and climatic environment, its superior quality ensures reliable connection for the higher standards and reliability of industrial machinery, marine electronics, power and signal control components, etc. Plastic material used is high performance PA66,. Male pins used is excellent mechanical properties of phosphor bronze assembly with good electrical conductivity brass. The contact surface is gold-plated with 4u"-20u", its superior mechanical properties ensure long effective application with insert and extract lifetime up to 3000 times.



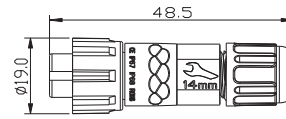
Contact	Wire Gauge	Panel Thickness	Hole	IP	Operating Temperature	Voltage Rating	Rated Current	Chogori Cat Page	Code
2	0.823mm ²	Max. 4.0mm	16mmØ	IP67	-45 ~ +105	300V	10A	47	22002625-01
3	0.823mm ²	Max. 4.0mm	16mmØ	IP67	-45 ~ +105	300V	10A	47	22003625-01
4	0.823mm ²	Max. 4.0mm	16mmØ	IP67	-45 ~ +105	125V	10A	47	22004625-01
5	0.519mm ²	Max. 4.0mm	16mmØ	IP67	-45 ~ +105	60V	5A	47	22005625-01
6	0.519mm ²	Max. 4.0mm	16mmØ	IP67	-45 ~ +105	60V	5A	47	22006625-01
2+4	0.823mm ² *2C + 0.519mm ² *4C	Max. 3.0mm	16mmØ	IP67	-45 ~ +105	60V	10A+2A	47	22204625-01
2+6	0.823mm ² *3C + 0.519mm ² *4C	Max. 3.0mm	16mmØ	IP67	-45 ~ +105	30V	5A+2A	47	22206625-01



STANDARD SERIES PLUG LOCK BAYONET

FEMALE SOCKET

Twist-on to lock bayonet plug Standard series 19mmØ
3.5-6.8mm Cable Entry Field installable version.

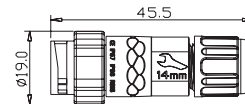


Contact	Wire Gauge	Cable	Cable Range	Size	IP	Operating Temperature	Voltage Rating	Rated Current	Chogori Cat Page	Code
2	0.823mm ²	18AWG	3.5-6.8mm	49x19mmØ	IP67	-45 to 105	300V	10A	44	22002221-01
3	0.823mm ²	18AWG	3.5-6.8mm	49x19mmØ	IP67	-45 to 105	300V	10A	44	22003221-01
4	0.823mm ²	18AWG	3.5-6.8mm	49x19mmØ	IP67	-45 to 105	125V	10A	44	22004221-01
5	0.519mm ²	20AWG	3.5-6.8mm	49x19mmØ	IP67	-45 to 105	60V	5A	44	22005221-01
6	0.519mm ²	20AWG	3.5-6.8mm	49x19mmØ	IP67	-45 to 105	60V	5A	44	22006221-01
8	0.519mm ²	20AWG	3.5-6.8mm	49x19mmØ	IP67	-45 to 105	60V	5A	44	22008221-01
10	0.33mm ²	22AWG	3.5-6.8mm	49x19mmØ	IP67	-45 to 105	60V	2A	44	22010221-01
12	0.33mm ²	22AWG	3.5-6.8mm	49x19mmØ	IP67	-45 to 105	60V	2A	44	22012221-01
2+4	0.823mm ² *2C + 0.519mm ² *4C	18AWG*2C + 20AWG*4C	3.5-6.8mm	49x19mmØ	IP67	-45 to 105	30V	10A+5A	44	22204221-01
3+4	0.823mm ² *3C + 0.519mm ² *4C	18AWG*3C + 20AWG*4C	3.5-6.8mm	49x19mmØ	IP67	-45 to 105	30V	10A+2A	44	22304221-01

STANDARD SERIES INLINE PLUG LOCK BAYONET

MALE PINS

Twist-on to lock bayonet plug Standard series 19mmØ
3.5-6.8mm Cable Entry Field installable version.

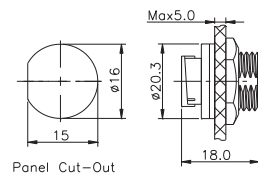


Contact	Wire Gauge	Cable	Cable Range	Size	IP	Operating Temperature	Voltage Rating	Rated Current	Chogori Cat Page	Code
2	0.823mm ²	18AWG	3.5-6.8	3.5-6.8	IP67	-45 ~ +105	300V	10A	53	22002321-01
3	0.823mm ²	18AWG	3.5-6.8	3.5-6.8	IP67	-45 ~ +105	300V	10A	53	22003321-01
4	0.823mm ²	18AWG	3.5-6.8	3.5-6.8	IP67	-45 ~ +105	125V	10A	53	22004321-01
5	0.519mm ²	20AWG	3.5-6.8	3.5-6.8	IP67	-45 ~ +105	60V	5A	53	22005321-01
6	0.519mm ²	20AWG	3.5-6.8	3.5-6.8	IP67	-45 ~ +105	60V	5A	53	22006321-01
8	0.519mm ²	20AWG	3.5-6.8	3.5-6.8	IP67	-45 ~ +105	60V	5A	53	22008321-01
10	0.33mm ²	22AWG	3.5-6.8	3.5-6.8	IP67	-45 ~ +105	60V	2A	53	22010321-01
12	0.33mm ²	22AWG	3.5-6.8	3.5-6.8	IP67	-45 ~ +105	60V	2A	53	22012321-01
2+4	0.823mm ² *2C + 0.519mm ² *4C	18AWG*2C + 20AWG*4C	3.5-6.8	3.5-6.8	IP67	-45 ~ +105	30V	10A+5A	53	22204321-01
3+4	0.823mm ² *3C + 0.519mm ² *4C	18AWG*3C + 20AWG*4C	3.5-6.8	3.5-6.8	IP67	-45 ~ +105	30V	10A+2A	53	22304321-01

STANDARD SERIES REAR PANEL LOCK BAYONET

REAR PANEL MOUNT - MALE PINS

Twist-on to lock bayonet chassis mount Standard series
Screw fixing behind panel with rubber grommet. Solder back.



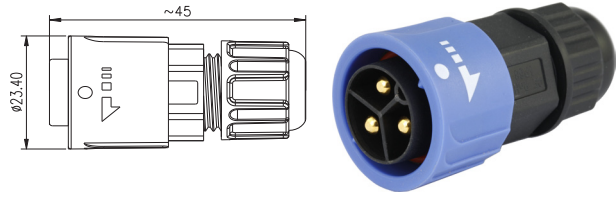
Contact	Wire Gauge	Panel Thickness	Hole	IP	Operating Temperature	Voltage Rating	Rated Current	Chogori Cat Page	Code
2	0.823mm ²	Max. 5.0mm	16mmØ	IP67	-45 ~ +105	300V	10A	43	22002525-03
3	0.823mm ²	Max. 5.0mm	16mmØ	IP67	-45 ~ +105	300V	10A	43	22003525-03
4	0.823mm ²	Max. 5.0mm	16mmØ	IP67	-45 ~ +105	125V	10A	43	22004525-03
5	0.519mm ²	Max. 5.0mm	16mmØ	IP67	-45 ~ +105	60V	5A	43	22005525-03
6	0.519mm ²	Max. 5.0mm	16mmØ	IP67	-45 ~ +105	60V	5A	43	22006525-03
8	0.519mm ²	Max. 5.0mm	16mmØ	IP67	-45 ~ +105	60V	5A	43	22008525-03
10	0.3319mm ²	Max. 5.5mm	16mmØ	IP67	-45 ~ +105	30V	2A	43	22010525-03
12	0.3319mm ²	Max. 5.5mm	16mmØ	IP67	-45 ~ +105	30V	2A	43	22012525-03
2+4	0.823mm ² *2C + 0.519mm ² *4C	Max. 5.0mm	16mmØ	IP67	-45 ~ +105	60V	10A+5A	43	22204525-03
3+4	0.823mm ² *3C + 0.519mm ² *4C	Max. 5.0mm	16mmØ	IP67	-45 ~ +105	60V	10A+2A	43	22304525-03

Chogori Middle Series

MIDDLE SERIES PLUG PUSH LOCK

MALE PUSH LOCK - MALE PINS

Simple push to lock plug insertion, then twist and pull to release. The mounting screw is attached to the front of the chassis panel. Middle connector is designed to apply in harsh industrial and climatic environment, its superior quality can ensure a reliable connection. This high-quality connector is self-locking when plugged into its mate, making insertion and extraction simple and quick. The plastic material used is high performance PA66, copper needles used is excellent mechanical properties of phosphor bronze assembly with good electrical conductivity brass.

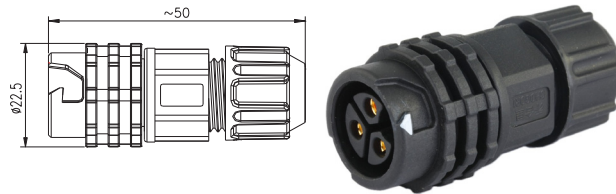


Contact	Wire Gauge	Cable	Cable Range	Size	IP	Operating Temperature	Voltage Rating	Rated Current	Chogori Cat Page	Code
2	2.5mm ²	14AWG	6.5-9.5	45x24mmØ	IP67	-45 ~ +105	300V	20A	69	23002131-02
3	2.5mm ²	14AWG	6.5-9.5	45x24mmØ	IP67	-45 ~ +105	300V	20A	69	23003131-02
4	1.0mm ²	17AWG	6.5-9.5	45x24mmØ	IP67	-45 ~ +105	300V	15A	69	23004131-02
5	0.75mm ²	18AWG	6.5-9.5	45x24mmØ	IP67	-45 ~ +105	125V	10A	69	23005131-02
6	0.75mm ²	18AWG	6.5-9.5	45x24mmØ	IP67	-45 ~ +105	125V	10A	69	23006131-02
7	0.34mm ²	22AWG	6.5-9.5	45x24mmØ	IP67	-45 ~ +105	60V	5A	69	23007131-02
8	0.34mm ²	22AWG	6.5-9.5	45x24mmØ	IP67	-45 ~ +105	60V	5A	69	23008131-02
3+5	1.00mm ² *3C + 0.25mm ² *5C	17AWG *3C + 24AWG *5C	6.5-9.5	45x24mmØ	IP67	-45 ~ +105	125 + 30V	15A + 2A	69	23305131-02

MIDDLE SERIES INLINE PLUG PUSH LOCK

FEMALE PUSH LOCK - FEMALE SOCKET

In-line socket solution with push to lock action for cable extension. This high-quality connector can self-locking when they plug into its mate, making insertion and extraction quick so other industrial machinery input and output devices can be easily replaced. All the Middle products are manufactured with high quality materials, the plastic material used is high performance PA66, copper needles used is excellent mechanical properties of phosphor bronze assembly with good electrical conductivity brass. The connector can insert and extract up to 3000 times or more.

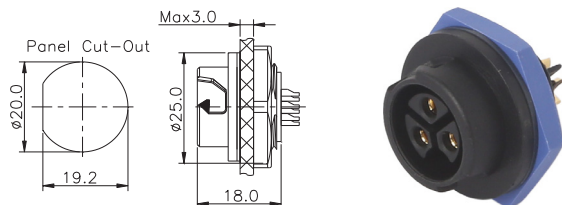


Contact	Wire Gauge	Cable	Cable Range	Size	IP	Operating Temperature	Voltage Rating	Rated Current	Chogori Cat Page	Code
2	2.5mm ²	14AWG	6.5-9.5	50x23mmØ	IP67	-45 ~ +105	300V	20A	74	23002431-02
3	2.5mm ²	14AWG	6.5-9.5	50x23mmØ	IP67	-45 ~ +105	300V	20A	74	23003431-02
4	1.0mm ²	17AWG	6.5-9.5	50x23mmØ	IP67	-45 ~ +105	300V	15A	74	23004431-02
6	0.75mm ²	18AWG	6.5-9.5	50x23mmØ	IP67	-45 ~ +105	125V	10A	74	23006431-02
8	0.34mm ²	22AWG	6.5-9.5	50x23mmØ	IP67	-45 ~ +105	60V	5A	74	23008431-02

MIDDLE SERIES SOCKET PUSH LOCK

REAR PANEL MOUNT - FEMALE SOCKET

Simple push to lock plug insertion, then twist and pull to release. Mounting screw is attached to the front of the chassis panel. This high-quality connector can self-locking when they plug into its mate, making insertion and extraction simple and quick. All the Middle products are manufactured with high quality materials to meet the various requirements of different environments, the plastic material used is high performance PA66, copper needles used is excellent mechanical properties of phosphor bronze assembly with good electrical conductivity brass.



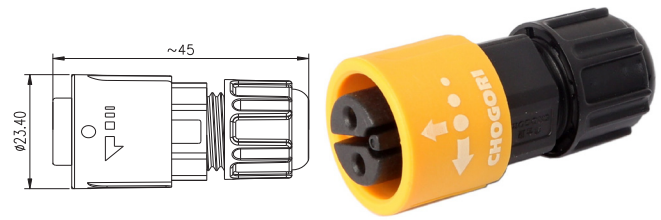
Contact	Wire Gauge	Cable	Panel Thickness	Hole	IP	Operating Temperature	Voltage Rating	Rated Current	Chogori Cat Page	Code
2	2.5mm ²	14AWG	Max. 4.0mm	20mmØ	IP67	-45 ~ +105	300V	20A	68	23002635-03
3	2.5mm ²	14AWG	Max. 4.0mm	20mmØ	IP67	-45 ~ +105	300V	20A	68	23003635-03
4	1.0mm ²	17AWG	Max. 4.0mm	20mmØ	IP67	-45 ~ +105	300V	15A	68	23004635-03
5	0.75mm ²	18AWG	Max. 4.0mm	20mmØ	IP67	-45 ~ +105	125V	10A	68	23005635-03
6	0.75mm ²	18AWG	Max. 4.0mm	20mmØ	IP67	-45 ~ +105	125V	10A	68	23006635-03
7	0.34mm ²	22AWG	Max. 4.0mm	20mmØ	IP67	-45 ~ +105	60V	5A	68	23007635-03
8	0.34mm ²	22AWG	Max. 4.0mm	20mmØ	IP67	-45 ~ +105	60V	5A	68	23008635-03



MIDDLE SERIES PLUG PUSH LOCK

MALE PUSH LOCK - FEMALE PINS

Reversed pins for active signal, power or control configurations. Simple push to lock plug insertion, then twist and pull to release. Middle connector is designed to apply in harsh industrial and climatic environment, its superior quality can ensure a reliable connection for industrial machinery and equipment, marine electronics, power and signal control systems. This high-quality connector is self-locking when they plug into its mate. All the Middle products are manufactured with high quality materials to meet the various requirements of different environments. The connector can insert and extract up to 3000 times.

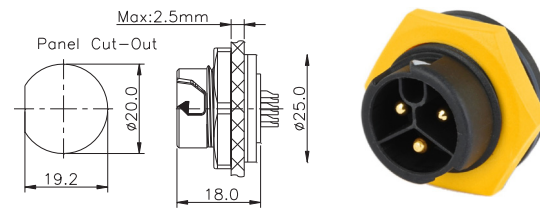


Contact	Wire Gauge	Cable	Cable Range	Size	IP	Operating Temperature	Voltage Rating	Rated Current	Chogori Cat Page	Code
2	2.5mm ²	14AWG	6.5-9.5	45x24mmØ	IP67	-45 ~ +105	300V	20A	63	23002231-02
3	2.5mm ²	14AWG	6.5-9.5	45x24mmØ	IP67	-45 ~ +105	300V	20A	63	23003231-02
4	1.0mm ²	17AWG	6.5-9.5	45x24mmØ	IP67	-45 ~ +105	300V	15A	63	23004231-02
5	0.75mm ²	18AWG	6.5-9.5	45x24mmØ	IP67	-45 ~ +105	125V	10A	63	23005231-02
6	0.75mm ²	18AWG	6.5-9.5	45x24mmØ	IP67	-45 ~ +105	125V	10A	63	23006231-02
8	0.34mm ²	22AWG	6.5-9.5	45x24mmØ	IP67	-45 ~ +105	60V	5A	63	23008231-02

MIDDLE SERIES SOCKET PUSH LOCK

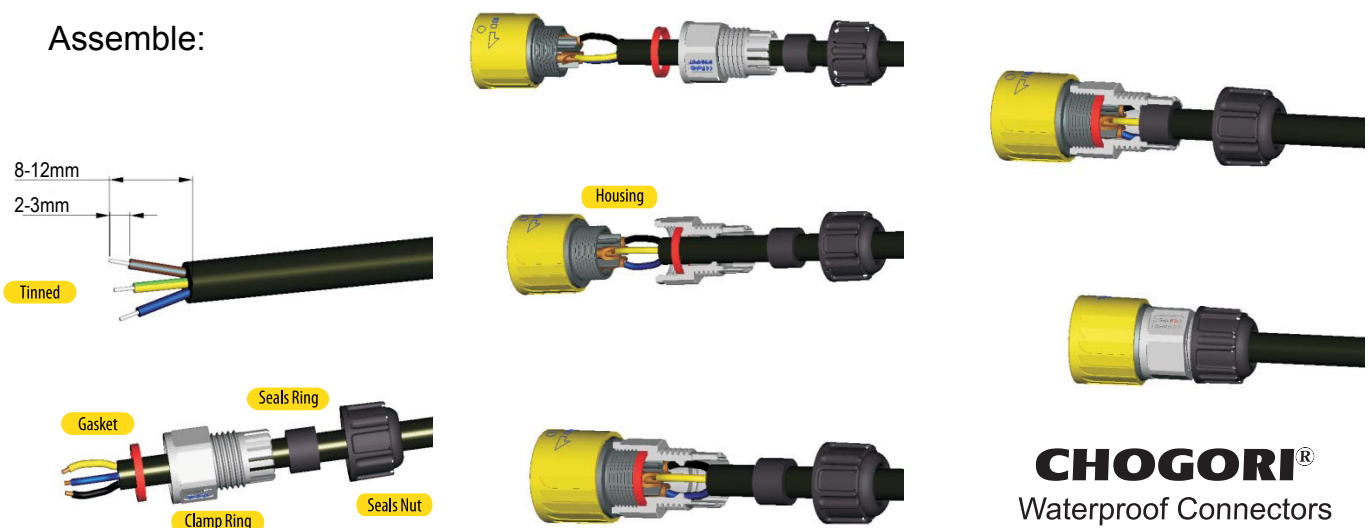
FEMALE PUSH LOCK - MALE PIN

Reversed pins for input signal, power or control configurations. Simple push to lock plug insertion, then twist and pull to release. Mounting screw is attached to the front of the chassis panel. This high-quality connector can self-locking when they plug into its mate, making insertion and extraction simply and quickly, so industrial machinery input and output devices can be quickly and easily replaced. All the Middle products are manufactured with high quality materials to meet the various requirements of different environments, copper needles used are phosphor bronze with low corrosion brass plating.



Contact	Wire Gauge	Cable	Panel Thickness	Hole	IP	Operating Temperature	Voltage Rating	Rated Current	Chogori Cat Page	Code
2	2.5mm ²	14AWG	Max 4.0mm	20mmØ	IP67	-45 ~ +105	300V	20A	59	23002535-01
3	2.5mm ²	14AWG	Max 4.0mm	20mmØ	IP67	-45 ~ +105	300V	20A	59	23003535-01
4	1.0mm ²	17AWG	Max 4.0mm	20mmØ	IP67	-45 ~ +105	300V	15A	59	23004535-01
5	0.75mm ²	18AWG	Max 4.0mm	20mmØ	IP67	-45 ~ +105	125V	10A	59	23005535-01
6	0.75mm ²	18AWG	Max 4.0mm	20mmØ	IP67	-45 ~ +105	125V	10A	59	23006535-01
8	0.34mm ²	22AWG	Max 4.0mm	20mmØ	IP67	-45 ~ +105	60V	5A	59	23008535-01
3+5	1.00mm ² *3C + 0.25mm ² *5C	17AWG *3C + 24AWG *5C	Max 4.0mm	20mmØ	IP67	-45 ~ +105	125+30V	15A+2A	59	23305535-01

Assemble:



CHOGORI®
Waterproof Connectors

Chogori Large Series

LARGE SERIES PUSH LOCK

WEATHER PROOF IP67

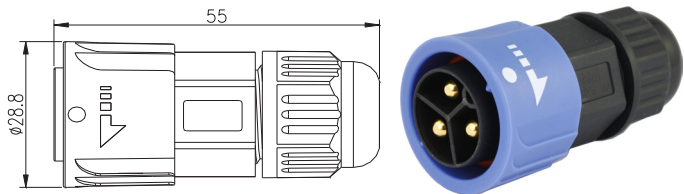
- The push-locking connector is simple and fast to plug in and out. Pins from 2 to 9, and additional 3+9 & 3+11. Installation type has nut, square flange and rhombus flange. What's more, the square flange is compatible with standard Amphenol® / Neutrik® installation holes.
- All the products are manufactured with high quality materials to meet the various requirements of different environments. The plastic material used is high performance PA66. Male pin used have excellent mechanical properties of phosphor bronze assembly with good electrical conductivity brass. Products have certificate by CE, UL, TUV and ROHS environmental protection requirements.
- Large series connector has good performance in waterproofing. Its waterproof rating can reach to IP67 standards. Thus it is ideal for indoor and outdoor harsh working environments. The connector can insert and withdraw to 3000 times or more, and ensure a reliable contact every time.



LARGE SERIES PLUG PUSH LOCK

MALE PUSH LOCK - MALE PINS

This Large series connector is blue capped to indicate a different pin gender for use where the signal is in another direction to the yellow capped versions. The push-locking connector is simple and fast to plug in and out. Pins from 2 to 9, and additional 3+9 & 3+11. The plastic material used is high performance PA66. Male pins uses the excellent mechanical properties of a phosphor bronze assembly with good electrical conductivity brass. Products have certificate by CE, UL, TUV and ROHS environmental protection requirements. Large series connector has good performance in waterproofing.

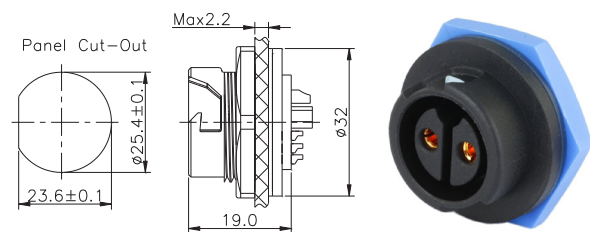


Contact	Wire Gauge	Cable	Cable Range	Size	IP	Operating Temperature	Voltage Rating	Rated Current	Chogori Cat Page	Code
2	4.0mm ²	12AWG	6.5-10.5	55x29mmØ	IP67	-45 ~ +105	300V	20A	92	24002131-02
3(20A)	4.0mm ²	12AWG	6.5-10.5	55x29mmØ	IP67	-45 ~ +105	300V	20A	92	24003131-02
3(50A)	8.4mm ²	8AWG	6.5-10.5	55x29mmØ	IP67	-45 ~ +105	300V	50A	92	24003131-04
9	0.75mm ²	18AWG	6.5-10.5	55x29mmØ	IP67	-45 ~ +105	125V	5A	92	24009131-02
3+9(FM)	2.5mm ² *3C + 0.2mm ² *9C	12AWG *3C + 24AWG *9C	6.5-10.5	55x29mmØ	IP67	-45 ~ +105	300V	20A+5A	92	24309131-02
3+11(FM)	2.5mm ² *3C + 0.2mm ² *11C	12AWG *3C + 24AWG *11C	6.5-10.5	55x29mmØ	IP67	-45 ~ +105	300V	20A+5A	92	24311131-02

LARGE SERIES SOCKET PUSH LOCK

FRONT PANEL MOUNT - FEMALE PINS

This Large series connector is blue capped to indicate a different pin gender for use where the signal is in another direction to the yellow capped versions. Simple push to lock plug insertion, then twist and pull to release. Mounting screw is attached to the front of the chassis panel. Excellent mechanical properties of phosphor bronze assembly with good electrical conductivity brass. It is ideal for indoor and outdoor harsh working environments. The connector can insert and withdraw to 3000 times or more, ensure a reliable contact every time.

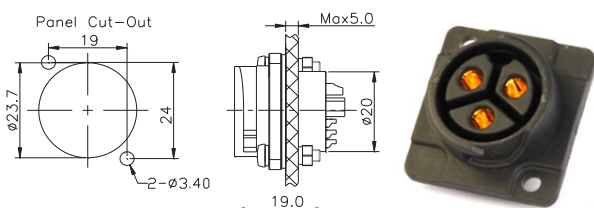


Contact	Wire Gauge	Cable	Panel Thickness	Hole	IP	Operating Temperature	Voltage Rating	Rated Current	Chogori Cat Page	Code
18	0.3mm ²	22AWG	Max 5.0mm	25mmØ	IP67	-45 ~ +105	125V	5A	85	24018635-01

LARGE SERIES SOCKET PUSH LOCK

SQUARE PANEL MOUNT - FEMALE PIN

Blue capped compatible. The push-locking connector is simple and fast to plug in and out. Pins from 2 to 9, and additional 3+9 & 3+11. The square flange is compatible with Amphenol® and Neutrik® installation holes. All the products are manufactured with high quality materials to meet the various requirements of different environments. The plastic material used is high performance PA66. Male pins used have excellent mechanical properties of phosphor bronze assembly with good electrical conductivity brass. Products have certificate by CE, UL, TUV and ROHS environmental protection requirements. The connector can insert and withdraw to 3000 times or more, ensure a reliable contact every time.



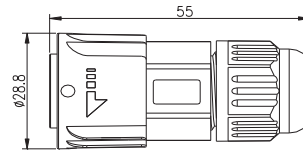
Contact	Wire Gauge	Cable	Panel Thickness	Hole	IP	Operating Temperature	Voltage Rating	Rated Current	Chogori Cat Page	Code
2	4.0mm ²	12AWG	Max 5.0mm	XLR	IP67	-45 ~ +105	300V	20A	86	24002636-01
3(20A)	4.0mm ²	12AWG	Max 5.0mm	XLR	IP67	-45 ~ +105	300V	20A	86	24003636-01



LARGE SERIES PLUG PUSH LOCK

MALE PUSH LOCK - FEMALE PINS

The push-locking connector is simple and fast to plug in and out. Simply align and push to connect with weatherproof IP67 security. Twist and pull to release for quick and easy swapping of plugs. All the products are manufactured with high quality materials to meet the various requirements of different environments, the plastic material used is high performance PA66, male pin used is excellent mechanical properties of phosphor bronze assembly with good electrical conductivity brass. Products have certificate by CE, UL, TUV and ROHS environmental protection requirements.

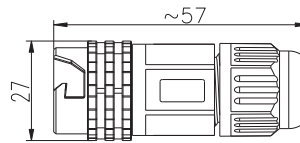


Contact	Wire Gauge	Cable	Cable Range	Size	IP	Operating Temperature	Voltage Rating	Rated Current	Chogori Cat Page	Code
2	4.0mm ²	12AWG	6.5-10.5	55x29mmØ	IP67	-45 ~ +105	300V	20A	87	24002231-02
3(20A)	4.0mm ²	12AWG	6.5-10.5	55x29mmØ	IP67	-45 ~ +105	300V	20A	87	24003231-02
3(50A)	8.4mm ²	8AWG	6.5-10.5	55x29mmØ	IP67	-45 ~ +105	300V	50A	87	24003231-04
9	0.75mm ²	18AWG	6.5-10.5	55x29mmØ	IP67	-45 ~ +105	125V	5A	87	24009231-02
3+9(FM)	2.5mm ² *3C + 0.2mm ² *9C	12AWG *3C + 24AWG *9C	6.5-10.5	55x29mmØ	IP67	-45 ~ +105	300V	20A+5A	87	24309231-02
3+11(FM)	2.5mm ² *3C + 0.2mm ² *11C	12AWG *3C + 24AWG *11C	6.5-10.5	55x29mmØ	IP67	-45 ~ +105	300V	20A+5A	87	24311231-02

LARGE SERIES INLINE PLUG PUSH LOCK

FEMALE PUSH LOCK - MALE PINS

Series inline connector for extending Large Series Connectors. The push-locking connector is simple and fast to plug in and out. Pins from 2 to 9, and additional 3+9 & 3+11. All the products are manufactured with high quality materials, the plastic material used is high performance PA66, male pin used is excellent mechanical properties of phosphor bronze assembly with good electrical conductivity brass. Products have certificate by CE, UL, TUV and ROHS environmental protection requirements. Large series connector has good performance in waterproofing. IP67.

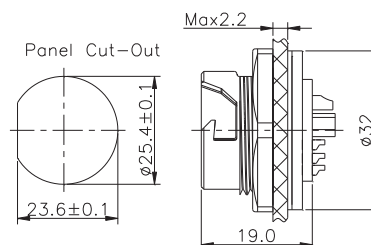


Contact	Wire Gauge	Cable	Cable Range	Size	IP	Operating Temperature	Voltage Rating	Rated Current	Chogori Cat Page	Code
3(20A)	4.0mm ²	12AWG	6.5-10.5	57x27mmØ	IP67	-45 ~ +105	300V	20A	94	24003331-02
3(50A)	8.4mm ²	8AWG	6.5-10.5	57x27mmØ	IP67	-45 ~ +105	300V	50A	94	24003331-04
3+11(FM)	2.5mm ² *3C + 0.2mm ² *11C	12AWG *3C + 24AWG *11C	6.5-10.5	57x27mmØ	IP67	-45 ~ +105	300V	20A+5A	94	24311331-02

LARGE SERIES SOCKET PUSH LOCK

FRONT PANEL MOUNT - MALE PINS

Receptacle for accepting Push Lock Large Connector Plugs. Simple push to lock plug insertion, then twist and pull to release. Mounting screw is attached to the front of the chassis panel. This high-quality connector is self-locking when plugged into its mate, making insertion and extraction simply and quickly, so input and output devices can be quickly and easily replaced. All the Large Series products are manufactured with high quality materials to meet the various requirements of different environments, copper needles used are phosphor bronze with low corrosion high conductivity brass plating.



Contact	Wire Gauge	Cable	Panel Thickness	Hole	IP	Operating Temperature	Voltage Rating	Rated Current	Chogori Cat Page	Code
2	4.0mm ²	12AWG	Max 5.0mm	25mmØ	IP67	-45 ~ +105	300V	20A	84	24002535-01
3(20A)	4.0mm ²	12AWG	Max 5.0mm	25mmØ	IP67	-45 ~ +105	300V	20A	84	24003535-01
3(50A)	8.4mm ²	8AWG	Max 5.0mm	25mmØ	IP67	-45 ~ +105	300V	50A	84	24003535-02



Chogori RJ45 Series

RJ45 PLUG JACKET SCREW

FITS OVER RJ45 & 24AWG

Jacket plug that fits over a standard RJ45 CAT5e/6 type plug and lead combination. Suits most cables with 24AWG wiring, 6.5 to 2.5mm Diameter. Compatible with Screw type Jacks. Weather proof to IP67 standards. Quality PA66 plastic materials. Up to CAT6 compatible.

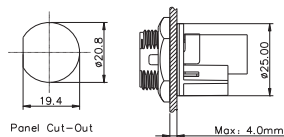
Cable	Cable Range	IP	Chogori Cat Page	Code
24AWG	4.0-7.0	IP67	106	33000000-03



RJ45 JACK 180° SCREW

RJ45 IN AND OUT

Panel Mount 20mm hole with front mounting screw. Compatible with the Screw plug. Rear is a RJ45 Jack. All pins gold plated. Weather proof to IP67 standards. Quality PA66 plastic materials. Up to CAT6 compatible.

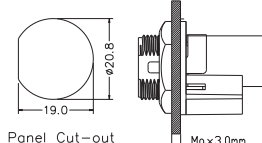


Contact	Suits	IP	Chogori Cat Page	Code
8	33000000-03	IP67	106	33000000-01
8	Different thread	IP67	109	33000000-10

RJ45 JACK METAL 180° SCREW

RJ45 IN AND OUT

Panel Mount 20mm hole with front mounting screw. Compatible with the Screw plug. Rear is a RJ45 Jack. All pins gold plated. Weather proof to IP67 standards. Quality All-Metal construction. Up to CAT6 compatible.

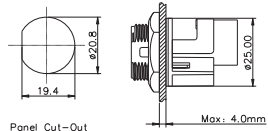


Contact	Panel Thickness	IP	Chogori Cat Page	Code
8	Max. 4.0mm	IP67	109	33000000-12

RJ45 JACK 90° SCREW

REAR RJ45 IS ANGLED

Panel Mount 20mm hole with front mounting screw. Compatible with the Screw plug. Rear is a RJ45 Jack. All pins gold plated. Weather proof to IP67 standards. Quality PA66 plastic materials. Up to CAT6 compatible.

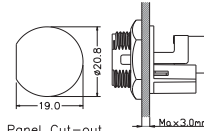


Contact	Suits	IP	Chogori Cat Page	Code
8	33000000-03	IP67	106	33000000-02

RJ45 JACK METAL 90° SCREW

REAR RJ45 JACK IS ANGLED

Panel Mount 20mm hole with front mounting screw. Compatible with the Screw plug. Rear is a RJ45 Jack. All pins gold plated. Weather proof to IP67 standards. Quality PA66 plastic materials. Up to CAT6 compatible.



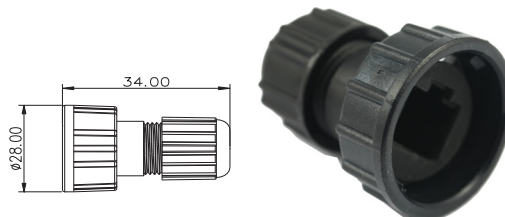
Contact	Panel Thickness	IP	Chogori Cat Page	Code
8	Max. 4.0mm	IP67	110	33000000-15

RJ45 PLUG JACKET BAYONET

FITS OVER RJ45 & 24AWG

Jacket plug that fits over a standard RJ45 CAT5e/6 type plug and lead combination. Suits most cables with 24AWG wiring, 6.5 to 2.5mm Diameter. Compatible with Bayonet type Jacks. Weather proof to IP67 standards. Quality PA66 plastic materials. Up to CAT6 compatible.

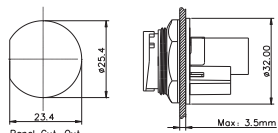
Cable	Cable Range	IP	Chogori Cat Page	Code
24AWG	4.0-7.0	IP67	107	33000000-06



RJ45 JACK 180° BAYONET

RJ45 IN AND OUT

Panel Mount 20mm hole with front mounting screw. Compatible with the Bayonet plug. Rear is a RJ45 Jack. All pins gold plated. Weather proof to IP67 standards. Quality PA66 plastic materials. Up to CAT6 compatible.

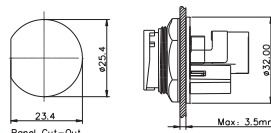


Contact	Thread	Suits	Chogori Cat Page	Code
8	Narrow	33000000-06	107	33000000-04

RJ45 JACK 90° BAYONET

REAR RJ45 IS ANGLED

Panel Mount 20mm hole with front mounting screw. Compatible with the Bayonet plug. Rear is a RJ45 Jack. All pins gold plated. Weather proof to IP67 standards. Quality PA66 plastic materials. Up to CAT6 compatible.



Contact	Thread	Suits	Chogori Cat Page	Code
8	Narrow	33000000-06	107	33000000-05



Chogori USB Series

USB 2.0 PLUG SCREW

SOLDER BACK

USB 2.0 Type "B" Plug with solder back 4 pins plus earth. Quality PA66 plastics rated to IP68 weatherproofing connection. Compatible with USB Screw jacks.



Contact	Cable Range	Speed	Rated Current	Chogori Cat Page	Code
4	3.5-6.8	480Mbps	1.5A	112	34000000-01

USB 2.0 JACK SCREW

SOLDER PINS REAR

Circle Panel Mount
Screw front mount
Solder pins back.
480Mbps
IP68



Contact	Speed	Rated Current	Chogori Cat Page	Code
4	480Mbps	1.5A	113	34000000-03

USB 2.0 PLUG BAYONET

SOLDER BACK

USB 2.0 Type "B" Plug with solder back 4 pins plus earth. Quality PA66 plastics rated to IP67 weatherproofing connection. Compatible with USB Screw jacks.



Contact	Cable Range	Speed	Rated Current	Chogori Cat Page	Code
4	3.5-6.8	480Mbps	1.5A	112	34000000-02

USB 2.0 JACK BAYONET

SOLDER PINS REAR

Circle Panel Mount
Screw front mount
Solder pins back.
480Mbps
IP68
Bayonet



Contact	Speed	Rated Current	Chogori Cat Page	Code
4	480Mbps	1.5A	114	34000000-04

USB 2.0 JACK BAYONET & CAP

SPRING CLOSE DUST CAP

Rhombus Panel Mount with IP67 weather sealed dust cap. USB 2.0 to 5 pins solder back. Bayonet.



Contact	Speed	Rated Current	Chogori Cat Page	Code
4	480Mbps	1.5A	115	34000000-05

Chogori D-Sub Series

D PLUG FEMALE

SOLDER BACK RS232

IP 67 Suit cable 4.5-6.5mm



Pins	Cable Range	Voltage Rating	Rated Current	Chogori Cat Page	Code
9	4.5-6.5	90V	5A	120	31009211-01
15	4.5-6.5	90V	2A	120	31015211-01

D PLUG MALE

SOLDER BACK RS232

IP 67 Suit cable 4.5-6.5mm



Pins	Cable Range	Voltage Rating	Rated Current	Chogori Cat Page	Code
9	4.5-6.5	90V	5A	119	31009111-01
15	4.5-6.5	90V	2A	108	31015111-01

D JACK FEMALE

SOLDER BACK RS232

2.0mm Max. Panel Depth.



Pins	Voltage Rating	Rated Current	Chogori Cat Page	Code
15	90V	2A	120	31015516-01

HDMI FRONT PANEL MOUNT LOCK TYPE

MALE TO HDMI FEMALE PANEL MOUNT

0.3M HDMI Female front panel mount to HDMI male connector. IP67 water resistance. Swinging lock arms are included to prevent water getting inside the joint. Suitable to use with Chogori IC02415030401 lead.



Length	Code
0.3M	IC02415030402

HDMI FRONT PANEL JOINT LOCK TYPE

MALE TO MALE

1.5M HDMI Male to HDMI Male front panel joint cable. Compatible with lock type HDMI Female Front Panel Socket IC02415030402



Length	Code
1.5M	IC02415030401



CHOGORI® Waterproof Connectors

