

CEMENT FIXED RESISTORS

SQP (STANDARD TYPE)

SQM (RADIAL TYPE)

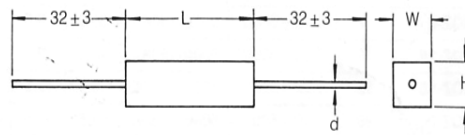
SQZ (PCB MOUNTING TYPE)

SQH SQS (CLAMP MOUNTING TYPE)

FEATURE

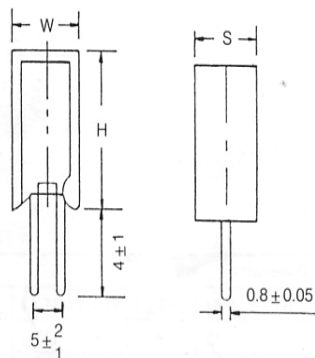
- Heat and flame resistant!
- Completely insulated character suitable for printed circuit board.
- For high resistance value, the winding core will be replaced by metal oxide film cutting core (RS type).
- Non-inductive type are available on request!

SQP

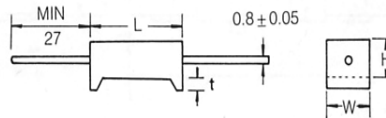


SQP	DIMENSIONS (mm)				Resistance Range (Ω)		Max Working Voltage
	L±0.5	W±0.5	H±0.5	d±0.03	SQP	M0 + SQP	
2W	18.0	7.0	7.0	0.65	0.1Ω ~ 50Ω	50 ~ 20KΩ	15V
3W	22.0	8.0	8.0	0.8	0.1Ω ~ 50Ω	50 ~ 33KΩ	350V
5W	22.0	9.5	9.0	0.8	0.1Ω ~ 50Ω	50 ~ 50KΩ	350V
7W	35.0	9.5	9.0	0.8	0.1Ω ~ 500Ω	500 ~ 50KΩ	500V
10W	48.0	9.5	9.0	0.8	0.1Ω ~ 500Ω	500 ~ 50KΩ	750V
15W	48.0	12.5	12.0	0.9	0.1Ω ~ 500Ω	500 ~ 150KΩ	1000V
20W	60.0	14.0	13.0	0.9	0.1Ω ~ 500Ω	500 ~ 150KΩ	1000V

SQM

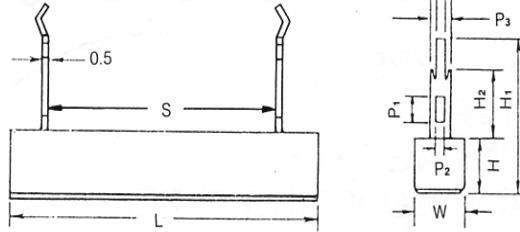


SQT



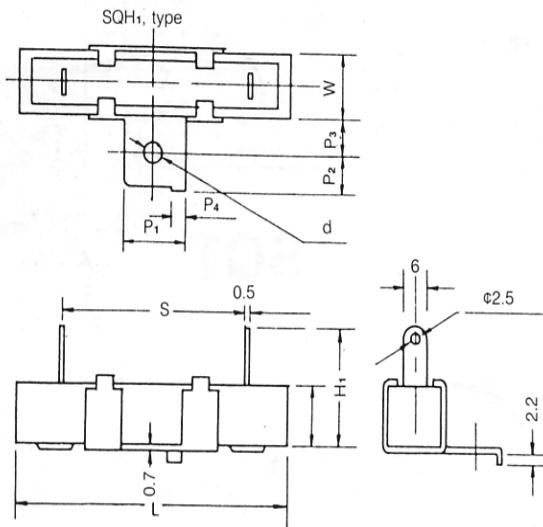
Type	Dimension(mm)			Resistance Range (Ω)		Type	Dimension(mm)				Resistance Range (Ω)	
	H±1.5	W±1	S±1	SQM	M0 + SQM		SQT	W±1	H±1	L±1.5	1±0.5	SQT
5W	25	13	9	0.1-50Ω	50-50KΩ	5W	10	9	22	1.5	0.1 ~ 50Ω	50 ~ 50KΩ
7W	39	13	9	0.1-500Ω	500-47KΩ	7W	10	9	35	3.0	0.1 ~ 500Ω	500 ~ 47KΩ
10W	51	13	9	0.1-500Ω	500-47KΩ	10W	10	9	48	3.0	0.1 ~ 500Ω	500 ~ 47KΩ

SQZ

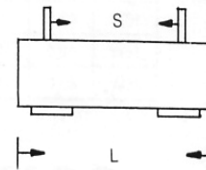


Description	Power Rating (W)	Resistance Range (Ω)		Dimensions (mm)									
		SQE	MO+SQZ	L	H	W	S	H1	H2	P1	P2	P3	P4
SQZ-5	5	0.1 Ω ~ 100 Ω	100 Ω ~ 50K Ω	27.0	9.5	9.5	15.0	24.0	9.5	4.0	2.0	5.0	1.4
SQZ-7	7	0.1 Ω ~ 500 Ω	500 Ω ~ 50K Ω	35.0	9.5	9.5	22.5	24.0	9.5	4.0	2.0	5.0	1.4
SQZ-10	10	0.2 Ω ~ 500 Ω	500 Ω ~ 50K Ω	48.0	9.5	9.5	35.0	24.0	9.5	4.0	2.0	5.0	1.4
SQZ-15	15	0.5 Ω ~ 500 Ω	500 Ω ~ 150K Ω	48.0	12.5	12.5	32.5	34.5	15.0	7.0	6.0	10.0	2.7
SQZ-20	20	1 Ω ~ 50 Ω	500 Ω ~ 150K Ω	63.5	12.5	12.5	42.2	34.5	15.0	7.0	6.0	10.0	2.7
SQZ-3S	3	0.1 Ω ~ 50 Ω	50 Ω ~ 33K Ω	22.0	8.0	8.0	10.0	23.0	12.0	4.0	2.0	5.0	1.4
SQZ-5S	5	0.1 Ω ~ 50 Ω	50 Ω ~ 50K Ω	22.0	9.5	9.5	10.0	24.0	12.0	4.0	2.0	5.0	1.4

SQHG



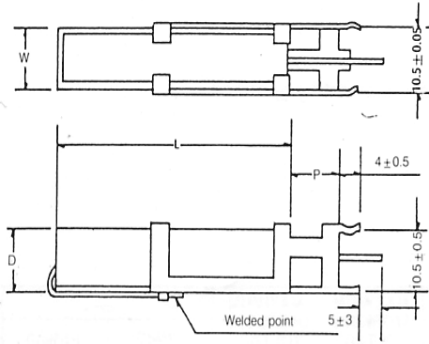
SQH



Type	Power Rating (W)	Resistance Range (Ω)		Dimensions (mm)									
		SQH	MO-SQH	L \pm 2	H \pm 1	W \pm 1	S \pm 1	H1 \pm 1	P1 \pm 1	P2 \pm 1	P3 \pm 1	P4 \pm 1	d
SQH-10	10	0.5 Ω ~ 500 Ω	500 Ω ~ 50K Ω	48.0	10.0	10.0	33	21	12	6	8.0	3.0	4
SQH-15	15	1 Ω ~ 500 Ω	500 Ω ~ 150K Ω	48.0	12.0	12.0	33	21	12	6	8.0	3.0	4
SQH-20	20	1 Ω ~ 500 Ω	500 Ω ~ 150K Ω	63.7	12.0	12.0	42	24	12	6	8.0	3.0	4
SQH-30	30	1 Ω ~ 500 Ω		75.0	19.0	18.0	56	30	17	8	10.0	3.0	4
SQH-40	40	1 Ω ~ 500 Ω		90.0	19.0	18.0	68	30	17	8	10.0	3.0	4

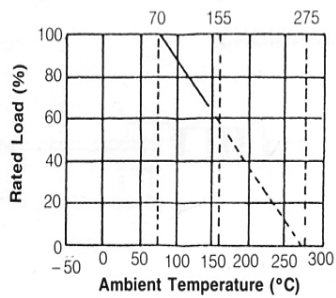


SQS

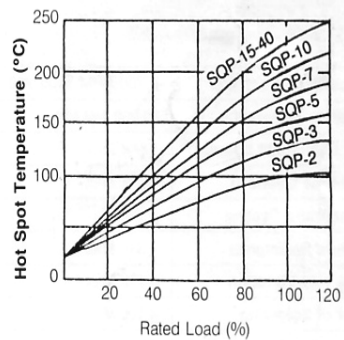


Style	Dimension (mm ± 1mm)				Resistance Range	
	W	D	L	P	Wirewound	RS
SQS-5	10	9	22	5	0.1Ω ~ 200Ω	200Ω ~ 50KΩ
SQS-7	10	9	35	10	0.1Ω ~ 300Ω	300Ω ~ 50KΩ
SQS-10	10	9	48	10	0.1Ω ~ 500Ω	500Ω ~ 50KΩ

DERATING CURVE



TEMPERATURE RISE



CHARACTERISTICS

REQUIREMENTS	CHARACTERISTICS
Temperature Coefficient	±300PPM/°C, <20Ω ±400PPM/°C
Insulation Resistance	> 100MΩ
Load Life (1,000 hours)	± (2% + 0.05Ω)
Short-time Overload	± (2% + 0.05Ω)
Dielectric Withstanding Voltage	± (1% + 0.05Ω)
Moisture Resistance	± (3% + 0.05Ω)
Shock and Vibration	± (1% + 0.05Ω)
Soldering Heat	± (1% + 0.05Ω)
Incombustibility	EX16 Times V., 5 min.

HEAT RISE CHART

