



# Fitting Guide for ½ round D-Line

## Measuring up

Plan your cable path. Check that you have all parts required.  
Next consider the space that will be needed for any accessories needed.

**Clip-Over** accessories allow a tolerance for imprecise measurements and untidy cuts.

**Smooth Fit** accessories give a smooth flush-alignment for perfect finish, but require precise measurements and straight cuts.

For Smooth fit use the accessory part as a template; pencil mark the surface at the shoulder points of the accessory.

These pencil marks indicate the point that the D-Line length needs to measure up to.

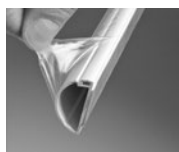
### Clip-Over example...



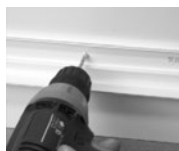
### Smooth fit example...



## Cutting & Installing Lengths



- Measure length(s). Pencil mark where cut is required.
- Use a mitre block and junior hacksaw to cut at the outer edge of the pencil mark.
- Remove the protective film cover.
- To peel & stick... Make sure the surface is clean & dry. Alternatively lengths can be drilled and screw fixed; as recommended for profiles with bases wider than 35mm.
- For easier installation we recommend that horizontal runs are fixed with the click lock at the top and the hinge at the base.
- Take care when positioning lengths, as a strong bond will be created with the surface.

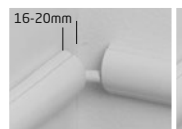


## Installing cables & accessories

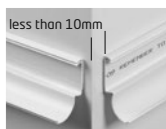
### Clip-Over

Lay cables into lengths, close the lid ensuring it snaps shut, then clip the accessory in place. The tabs clip over the top of the lengths.

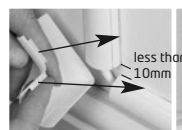
#### Internal Bend



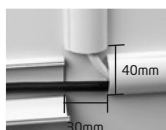
#### External Bend



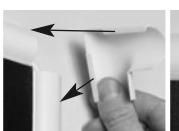
#### Flat Bend



#### Equal Tee



#### Door Top Bend



NOTE: some Clip-Over accessories have a section of self adhesive tape applied to the reverse. This helps secure the piece in place, please use if necessary.

## After Care



D-Line can accept gloss or emulsion paints... For best results use fine sandpaper to key the surface prior to painting.

### Smooth Fit

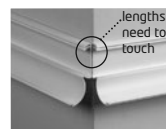
Lay cables into lengths, place the required accessory over the cables, then close the lid ensuring it snaps shut.

The lengths hold the accessories in position.

#### Internal Bend



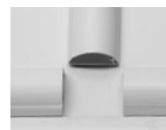
#### External Bend



#### Flat Bend



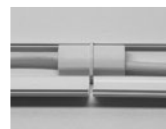
#### Equal Tee



#### Cable Inlet/Outlet



#### Connector



#### End Cap



It may be necessary to shape some accessories to allow for imperfections on walls.

**Important:** If using D-Line for 240v mains cables it is recommended you leave 45%+ of internal capacity for air circulation.