

battery type: Lithium - Iron Disulfide
battery size: IEC: FR03; ANSI: AAA; L92; Micro
chemical system: Li-FeS₂

Conditions

nominal voltage: 1.5 V
open circuit voltage: 1.75...1.85 V new battery
 1.70...1.85 V after 1 year storage at 20°C

capacity rated: 1200 mAh all measurements at 20°C ambient
 discharge at 75ohms load; 24hours/day
 End Voltage (EV): 0.9V

minimum: 1150 mAh discharge at 20mA constant current
 End Voltage (EV): 0.8V
 1075 mAh discharge at 500mA constant current
 End Voltage (EV): 0.8V

typical service output (new batteries)

- ≥ 670 cycles load resistor 3.6ohms; EV: 0.9V
discharge 15s/m 24h/d
- ≥ 220 min load resistor: 5.1ohms; EV: 0.9V
discharge 4min/h 8h/d
- ≥ 460 min load resistor: 10ohms; EV: 0.9V
discharge 1h/d
- ≥ 15 h load resistor: 20ohms; EV: 0.9V
discharge 24h/d
- ≥ 60 h load resistor: 75ohms; EV: 0.9V
discharge 4h/d

internal resistance: ≤ 400 mΩ at 1kHz, sine wave measurement
full battery

max. discharge current: 1500 mA continuous
 2000 mA pulse

shelf life: 10 years under proper storage conditions

leakage resistance over discharge: no leakage 20ohms continuous discharge
for 48h; ta: 20°C; RH: 60±15%
high temperature: no leakage store 20days at ta: 60°C; RH:90±5%

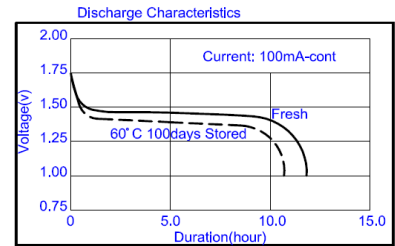
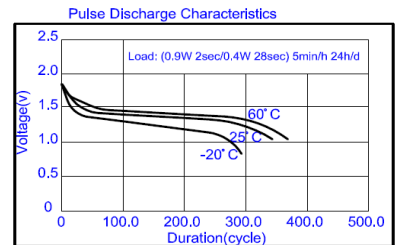
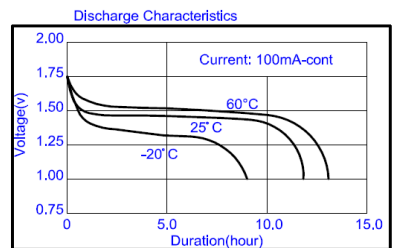
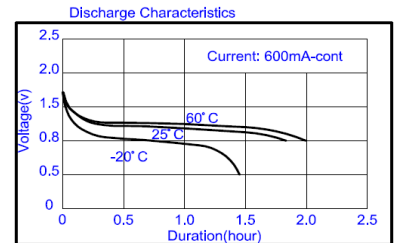
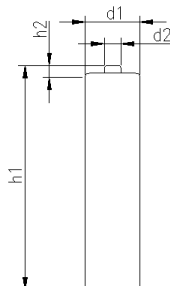
ambient temperature range: - 40...60 °C

recommended storage conditions: -20....40 °C ambient temperature
 45...75 % rel. humidity

mechanical specifications

washer: yes, with white washer

cell dimensions
 diameter d1: 10.35 - 0.4 mm
 diameter d2: 3.8 - 0.4 mm
 height h1: 44.5 - 0.4 mm
 height h2: 1.2 - 0.35 mm
 weight: 7.5 ± 1 g



	ANSMANN Specifications for model:	Ansmann Lithium Industrial Battery AAA - size 10pcs box
	data sheet no. / part no.	1501-0010
	supplier no.	703331
	author / date	AC / 12.01.2015