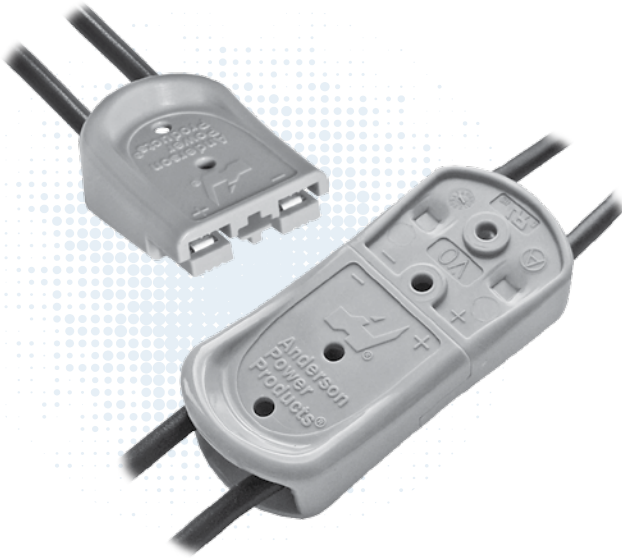


SBS® Mini Connectors - up to 52 amps



SBS® Mini Connector series is our smallest DC power connector in the SB® group. The SBS® Mini securely holds two crimp and poke contacts with sacrificial tips to enable hot swap capabilities on DC circuits. The low resistance contacts accept 20 to 10 AWG (0.75 to 4.0 mm²) wires allowing up to 52 amps of UL rated performance per position.

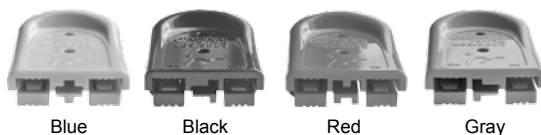
- **Touch Safe Housing**
Minimizes potential contact with live circuits
- **Color-Coded Mechanical Key**
Prevents accidental mating of connectors operating at different voltage levels
- **Compact & Ergonomic Housing**
Is “user friendly” during connection and disconnection of the system
- **UL Hot Plug Rated to 45 Amps @ 72 Volts**
Good for applications where the ability to interrupt circuits is required

| SBS® MINI ORDERING INFORMATION |

SBS® Mini Housing

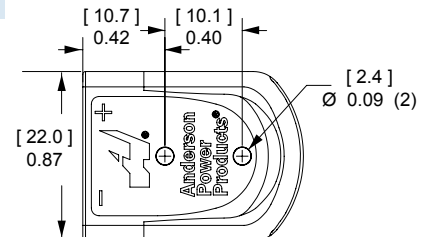
The smallest SBS® connector has 2 finger proof positions in a polycarbonate housing with an ergonomic grip. The housing securely holds crimp and poke contacts from the popular Powerpole® 15-45 series connectors.

| Description | - Part Numbers - |
|----------------------|------------------|
| Minimum Quantity ... | 100 |
| Red | B02265G1 |
| Gray | B02265G4 |
| Blue | B02265G3 |
| Black | B02265G2 |

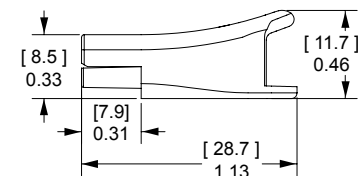


Actual Size

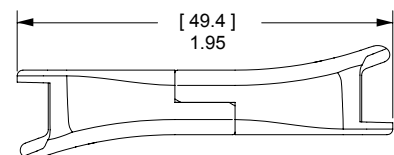
Top View



Side View



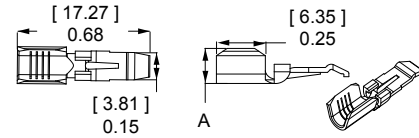
Mated Side View



PP15-45 Tin Plated Power Contacts

Offer cost effective performance up to 200 mating cycles. See specifications and temperature charts for amperage ratings by wire size.

| Barrel | AWG | mm ² | Loose Piece ----- Part Numbers ----- | Reeled | Dimensions - A - | |
|------------------|-------------|-----------------|---|--------|---------------------|------|
| | | | | | inches | mm |
| Minimum Quantity | | | 200 | 5,000 | | |
| Open | 14 to 10 K* | 2.1 to 5.3 | 261G2-LPBK | 261G2 | 0.20 | 5.08 |
| Open | 16 to 12 | 1.3 to 3.3 | 261G1-LPBK | 261G1 | 0.18 | 4.57 |
| Open | 20 to 16 | 0.52 to 1.3 | 262G1-LPBK | 262G1 | 0.16 | 4.06 |



K* - For #10 AWG class K stranded wire or smaller.

PP15-45 Silver Plated Power Contacts

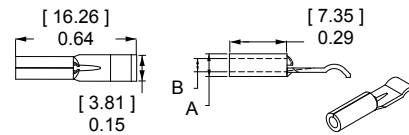
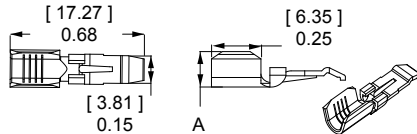
Maximize performance by offering up to 1,500 mating cycles. Recommended for circuit interrupt or hot plug applications. See specifications and temperature charts for amperage ratings by wire size. Only closed barrel contacts are suitable for soldering.

| Barrel | AWG | mm ² | Loose Piece ----- Part Numbers ----- | Reeled - Part Numbers - | Dimensions | | | | |
|------------------|-------------|-----------------|---|----------------------------|------------|------|--------|------|------|
| | | | | | - A - | | - B - | | |
| | | | | | inches | mm | inches | mm | |
| Minimum Quantity | | | 5,000 | 200 | 5,000 | | | | |
| Open | 14 to 10 K* | 2.1 to 5.3 | - | 261G3-LPBK | 261G3 | 0.20 | 5.08 | - | - |
| Open | 20 to 16 | 0.52 to 1.3 | - | 262G2-LPBK | 262G2 | 0.16 | 4.06 | - | - |
| Closed | 16 to 12 | 1.3 to 3.3 | 1331-BK | 1331 | - | 0.15 | 3.81 | 0.10 | 2.54 |
| Closed | 20 to 16 | 0.52 to 1.3 | 1332-BK | 1332 | - | 0.12 | 3.05 | 0.07 | 1.78 |

K* - For #10 AWG class K stranded wire or smaller.

Open Barrel Contact

Closed Barrel Contact



SBS® Mini - Tooling Information

| Wire Size | | Loose Piece Part Numbers | | | Reeled Part Numbers | | Reeled Contact Crimp Tools | | | | |
|-----------|-----------------|--------------------------|----------------|------------------------|---------------------|----------------|----------------------------|--------------------------------|----------------|-----------|---------------|
| AWG | mm ² | Tin Plating | Silver Plating | Hand Tool or | Tin Plating | Silver Plating | APP Applicator | APP Press | ATS Applicator | ATS Press | Air Feed Kit* |
| 16 / 20 | 1.3 / 0.52 | N/A | 1332 | 1309G2 or 1309G8 | N/A | N/A | N/A | N/A | N/A | N/A | N/A |
| 12 / 16 | 3.3 / 1.3 | N/A | 1331 | | N/A | N/A | N/A | N/A | N/A | N/A | N/A |
| 16 / 20 | 1.3 / 0.52 | 262G1-LPBK | 262G2-LPBK | 1309G3 or 1309G8 | 262G1 | 262G2 | TD0101 | 115V = TE0101 230V = TE0102 | 1385519-1 | 1725900-2 | 1424266-1 |
| 12 / 16 | 3.3 / 1.3 | 261G1-LPBK | N/A | | 261G1 | N/A | | | 1385520-1 | | |
| 10 / 14 | 5.3 / 2.1 | 261G2-LPBK | 261G3-LPBK | | 261G2 | 261G3 | | | 1385458-1 | | |

Need More Than 2 Positions?

See the stackable Powerpole® 15 to 45 connectors. These single position connectors use the same contact system as SBS® Mini and can be stacked together to create custom multiple position configurations.



SBS® MINI SPECIFICATIONS |

| Electrical | | |
|---|----------------|------------|
| Current Rating Amperes ¹ | UL 1977 | CSA |
| 10 AWG | 52 | 35 |
| 12 AWG | 41 | 28 |
| 14 AWG | 31 | 23 |
| 16 AWG | 24 | 16 |
| 18 AWG | 20 | 15 |
| Voltage Rating AC/DC | | |
| UL 1977 | 600 | |
| Dielectric Withstanding Voltage | | |
| Volts AC | 2,200 | |
| Avg. Mated Contact Resistance Milliohms ² | | |
| Wire Contact with 5/8" of #16 AWG | 0.875 | |
| Wire Contact with 5/8" of #12 AWG | 0.600 | |
| Wire Contact with 5/8" of #10 AWG | 0.525 | |
| UL Hot Plug Current Rating Amperes ³ | | |
| 250 cycles at 72V DC | 45A | |

| Materials | |
|------------------------------------|-----------------------------|
| Housing | |
| Plastic Resin | Polycarbonate |
| Contact Retention Spring | Stainless Steel |
| Housing Flammability Rating | |
| UL94 | V-0 |
| Glow Wire | 960°C (GWFI) / 800°C (GWIT) |
| Contact | |
| Base | Copper Alloy |
| Plating | Tin or Silver |
| Contact Termination Methods | |
| Crimp ³ | Wire Contacts |
| Hand Solder | 1331 & 1332 |

| Mechanical | | |
|--|--------------------|-----------------------|
| Wire Size Range | AWG | mm² |
| | 20 to 10 | 0.75 to 4.0 |
| Max. Wire Insulation Diameter | in. | mm |
| | 0.183 | 4.65 |
| Operating Temperature | °F | °C |
| | -4° to 221° | -20° to 105° |
| Mating Cycles No Load by Plating | Silver (Ag) | Tin (Sn) |
| 10 - 12 AWG | 1,500 | 200 |
| 14 - 18 AWG | 8,000 | 200 |
| Avg. Mating / Unmating Force ⁴ | Lbf. | N |
| 10 AWG | 10 to 11 | 45 to 49 |
| 12 to 18 AWG | 4 to 7 | 17 to 31 |
| Min Contact / Spring Retention Force | Lbf. | N |
| | 20 | 90 |

NOTE 1: See IEC 60664-1 for working voltage.

¹ Based on: 105°C rated or better cable of the largest size, Properly calibrated APP recommended tooling, and a 25°C ambient temperature. UL rating not to exceed the maximum operating temperature. CSA rating below a 30°C temperature rise.

² Use APP recommended tooling only. Alternate tools may adversely affect the performance of our connectors along with UL and CSA recognition.

³ Based on 261G3 with 10 AWG wire.

⁴ Contact customer service for contacts with a higher disconnect force.



Inquire with Customer Service for IEC / EN Approvals

| IEC INFORMATION |

| Connector Series | Configurations | Creepage/Clearance per IEC 60950-1 | Material Group |
|------------------|----------------|------------------------------------|----------------|
| SBS®Mini | Unmated | 1.47 mm | IIIa |
| | Mated | 2.40 mm | |

| Protection | |
|---------------------|------|
| Touch Safety | |
| UL 1977 Sec. 10.2 | Pass |
| IEC 60950 | Pass |
| IEC 60529 | IP20 |

NOTE 2: Refer to the Constructional Data form for additional information on our website., www.andersonpower.com



TEMPERATURE CHARTS | Temperature rise charts are based on a 25°C ambient temperature.

For Temperature Rise Above 60°C, Consult the Extended Temperature Rise Charts in the Appropriate Product Section on the Website.

Current - Temperature Derating per IEC 60512-5-2 Test 5B

