

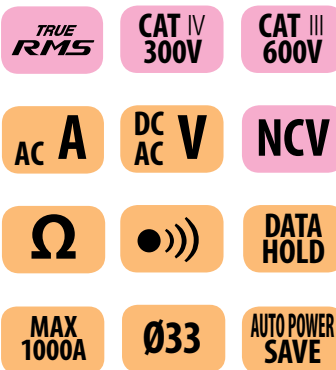


Kyoritsu 2117R TRMS clamp meter

The Kyoritsu 2117R is ideal for measuring current loads up to 1000 A AC, and is suitable for verification and trouble shooting in areas such as industrial plants, commercial buildings and schools.

Features at a glance

- Tear drop jaw design to allow easy access in crowded cable areas
- Integrated non contact voltage detection
- Large easy-to-read display with 0.01 A resolution
- Accurate reading with True RMS 60/600/1000A auto-ranging
- Long battery life with 170 hrs continuous measuring time
- CAT IV 300V / CAT III 600V safety ratings



Quality and reliability is our tradition

KYORITSU

Specifications

AC A	60.00/600.0/1000A (Auto-ranging) ±1.5%rdg±4dgt [45 - 65Hz] ±2.0%rdg±5dgt [40 - 1kHz]
AC V	60.00/600.0V (Auto-ranging) ±1.0%rdg±2dgt [45 - 65Hz] (600V) ±1.5%rdg±4dgt [40 - 1kHz] (60/600V)
DC V	60.00/600.0V (Auto-ranging) ±1.0%rdg±3dgt (60V) ±1.2%rdg±3dgt (600V)
Ω	600.0Ω/6.000/60.00/600.0kΩ (Auto-ranging) ±1.0%rdg±5dgt (600Ω) ±2.0%rdg±3dgt (6/60/600kΩ)
Continuity buzzer	600Ω (Buzzer sounds below 90Ω)
Conductor size	φ 33mm max.
Applicable standards	IEC 61010-1 CAT IV 300V, CAT III 600V Pollution degree 2 IEC 61010-031, IEC 61010-2-032, IEC 61010-2-033, IEC 61326-2-2, IEC 60529, EN 50581(RoHS)
Power source	R03/LR03(AAA)(1.5V)x2
Continuous measuring time	Approx.170 hours (Auto power save : approx.10 minutes)
Dimensions /Weight	204(L)x81(W)x36(D)mm / 220g Approx. (including batteries)
Accessories	7066A (Test leads), 9079 (Carrying case), R03(AAA)x2, Instruction manual
Optional	8008 (Multi-tran)

Included accessories



7066A
Test leads



9079
Carrying case

Optional accessories

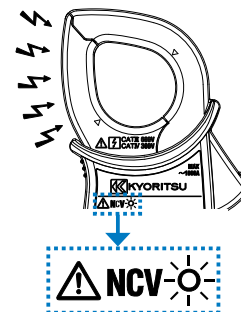


8008
Multi-tran
For measurement
up to 3000A AC

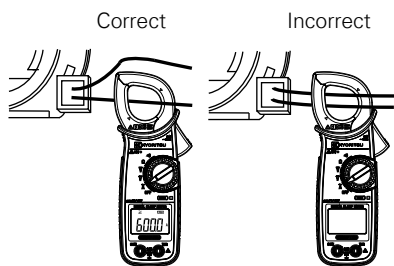


NCV Function

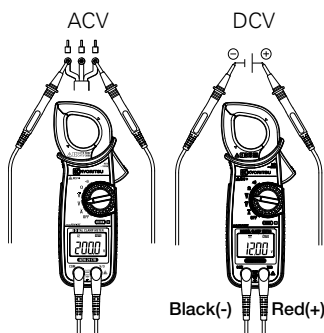
Red LED for NCV lights up at all functions except for OFF when an electric field exceeding AC70V is detected by the sensor



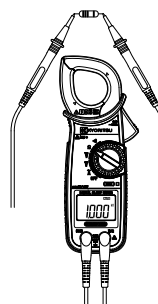
A Current Measurement



V Voltage Measurement



Ω Resistance Measurement



Continuity Measurement

