

Distribution Board: DBB324E / DBB312E

AC/DC Distribution: 19" 3RU - 24 pole (DBB324E) / 12 pole (DBB312E)



- ~ Supplied empty or with MCB's to site requirements.
- ~ Manufactured from 1.2mm mild steel to the high standard demanded in the IT industry.
- ~ Finished in black satin ripple powder-coat, with other colours/finish available to order.
- ~ Optional: Brass isolated busbars, 12-way numbered, double M5 screw, 1x M8 stud 165A
- ~ Optional: 12 way comb busbar's
- ~ Optional: MCB's

Product Components

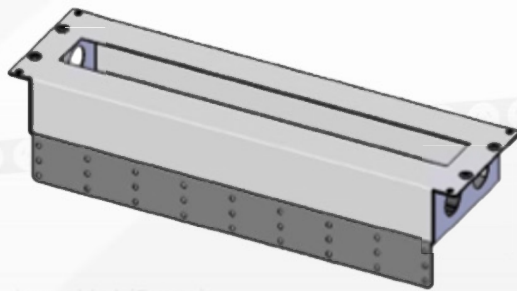
- 1x 19" 3RU Front Panel - Removable
- 1x 19" 3RU Rear Panel - remains fixed to 19" angles when front panel removed
- 1x Din Rail full width - fitted
- 8x Cable entry protect grommets - polythene
- 3x Pole fillers 7.5 way
- 8x M6x12 Pan Pozi MT Zinc-plated screws
- 8x M6 Cage Nuts ZP for 0.71-1.63 panel thickness 19" angles

Manufactured in Australia & New Zealand to comply with AS/NZS 3100:2009.

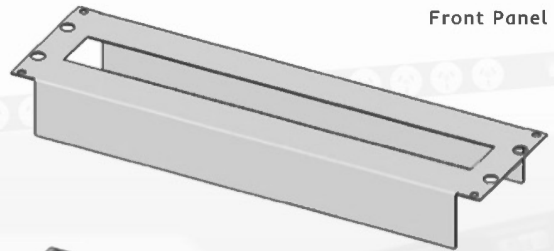
Designed to be installed in a 19" rack enclosure.

Distribution Board: DBB324E / DBB312E

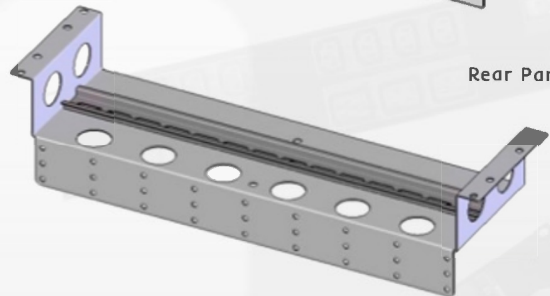
AC/DC Distribution: 19" 3RU - 24 pole (DBB324E) / 12 pole (DBB312E)



Assembled (Empty)

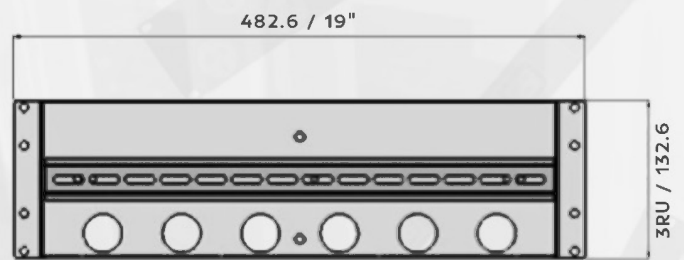
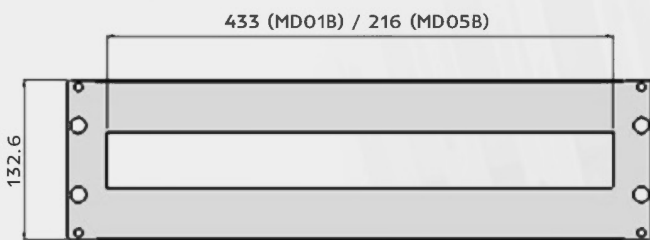


Front Panel



Rear Panel

Dimensions



Pre-punched cable management area