

Features

Heavy load up to 7,500VA
 Panel mount
 Heavy duty, switching current up to 30A
 High inrush current 65A and high surge voltage 10,000V
 Meet with associated requirement for "UL508 industrial control equipment"
 Use with air conditioner, electrical heater, remote-controlled TV, automatic control and household electric device
 CEus: E139468



Ordering information

FRA4 - DC12V		
1	2	
1 Relay model	Note: RoHS : RoHS compliant relay	
2 Rated voltage	RoHS-N: AgSnO ₂ contact	

Coil rating

Rated voltage	Coil resistance	Rated current	Must operate voltage	Must dropout voltage	Maximum voltage	Power consumption (W)	Operate time	Release time
(V)	Ω/+10%	(mA)	% of rated voltage (at 20°C)			Approx.	(ms)	(ms)
5	21	238	70 Max.	10 Min.	130 Max.	1.2	<20	<5
6	30	200						
9	67	134						
12	120	100						
18	270	66						
24	480	50						
48	1920	25						

CAUTION: 1. The use of any coil voltage less than the rated coil voltage will compromise the operation of the relay.
 2. Pickup and release voltage are for test purposes only and are not to be used as design criteria.

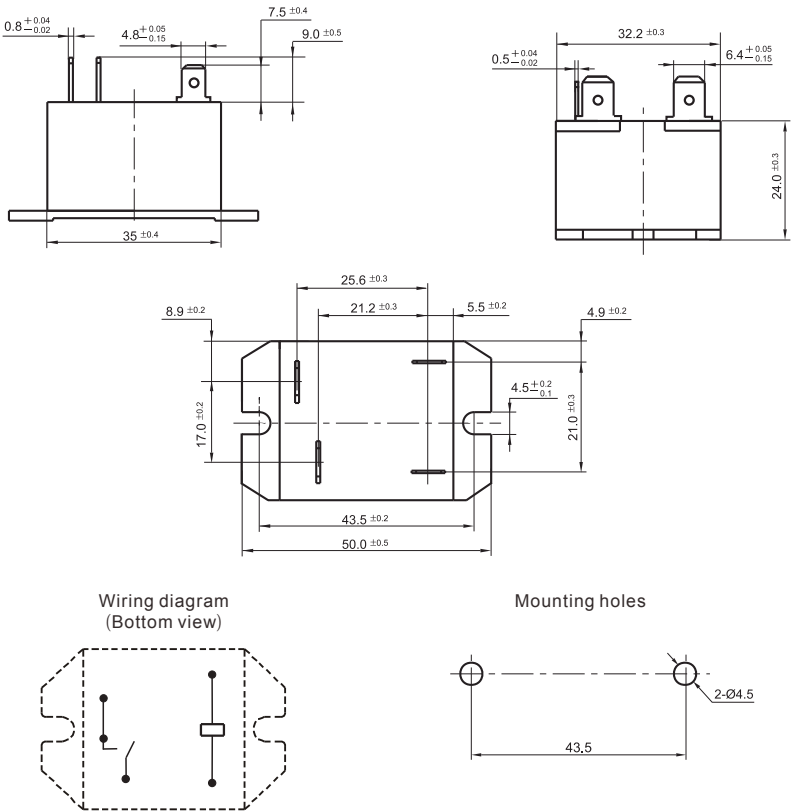
Characteristics

Contact arrangement		SPST (1 Form A)
Contact material		Silver alloy
Contact resistance		100mΩ Max. (at 1A 6VDC)
Contact rating (resistive)		30A/250VAC; 2HP 250VAC
Switching power		7,500VA Max.
Switching voltage		AC 277V Max.
Insulation resistance		1,000MΩ Min. (500VDC)
Dielectric strength		1,200VAC (50Hz/min) Between open contacts 4,000VAC (50Hz/min) Between coil and contact
Shock resistance		Functional : 196m/s ² Destructive: 980m/s ²
Vibration resistance		1.5mm Double amplitude 10-55Hz
Ambient temperature		-40°C to +70°C
Humidity		85% RH, 40°C
Operation life	Mechanical	5 x 10 ⁶
	Electrical	1 x 10 ⁶ (at rated load)
Weight		55g Approx.

(Specifications are subject to change without notices.)

Dimensions

mm



Reference data

