



Smart Wireless Peephole Network Camera IC-6220DC



Wireless Camera

Stable signal for the home security



2-way Audio

Real-time listen and talk



PIR Sensor

Heat-based for precise motion detection



Night Vision

Best support for night time surveillance



Live Video

See what's happening immediately



Free Cloud Storage

Recordings are saved for long-term safekeeping



Easy Installation

Quickly self-installed in a few steps



Universal Design

High door compatibility



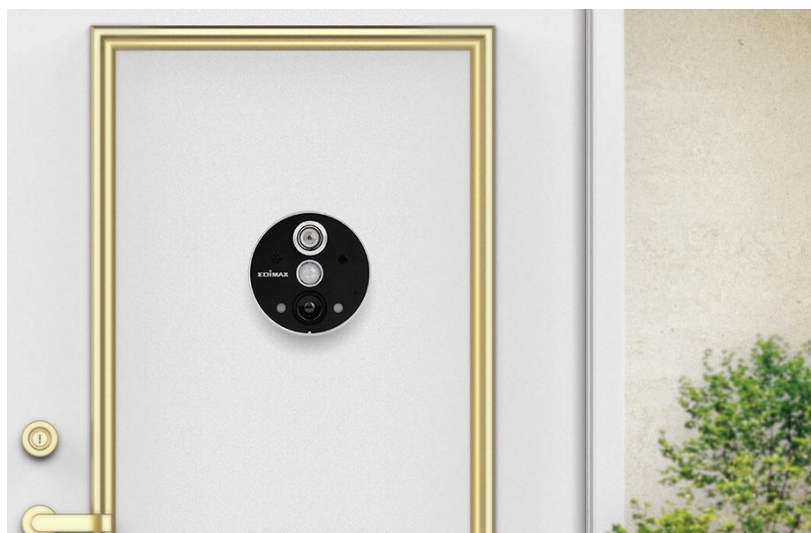
Smart Wireless Peephole Network Camera

Introduction

The IC-6220DC is a wireless peephole door camera that enables you to see, listen, and answer the door from your smartphone whether you are at home, in the office or on the road. Get your convenient and secure smart-life started at home with Edimax.

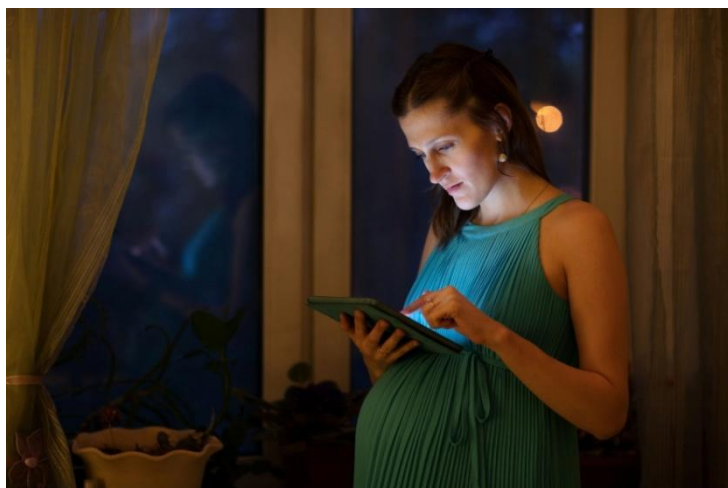
Wireless Peephole Camera

The battery-powered peephole camera installs onto your door and works completely wire-free. There's no cable to your router required thanks to the included separate gateway unit which connects to your router instead, and communicates with your camera. This unique design enables fully wireless operation at your door and ensures that a reliable wireless signal is always available to your camera, as well as keeping inside your house neat, tidy and cable-free with only a few quick minutes needed for easy installation.



Convenient

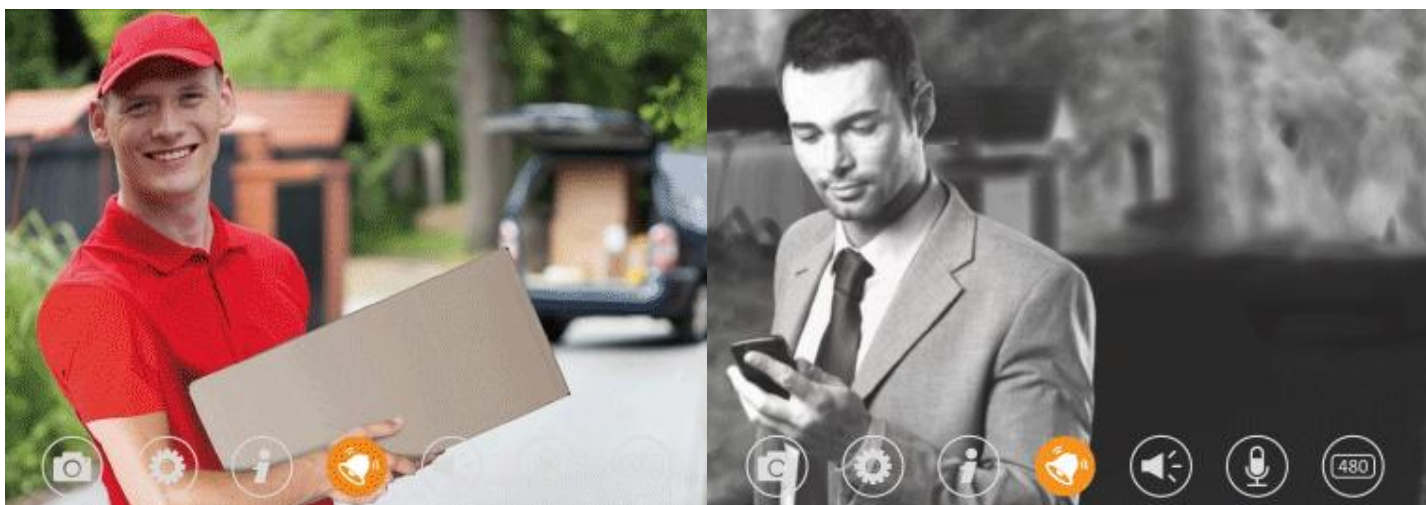
With the IC-6220DC there's no need to be afraid when home alone. Especially reassuring for the elderly or pregnant women, you can see what's happening from a mobile device and decide to answer the door or not. Receive important deliveries or notifications, or filter uninvited people or salesmen who visit.



Safety and Security

Home security begins at the front door. The IC-6220DC is just like your security guard, preventing home invasions and taking care of your home security day and night.

- 24/7 remotely monitor who's at the door
- Offers peace-of-mind and keeps burglars out of your house
- Quickly starts recording when any motions is detected



PIR Sensor For Automatic Detection

Designed to avoid false alerts from movement such as shadows, street lights or branches swaying in the breeze, the IC-6220DC's motion detection system adopts infrared heat-source sensing technology. Its PIR sensor can precisely detect objects that move across sensors with a heat differential such as humans or animals, and then send push notifications to the mobile device.



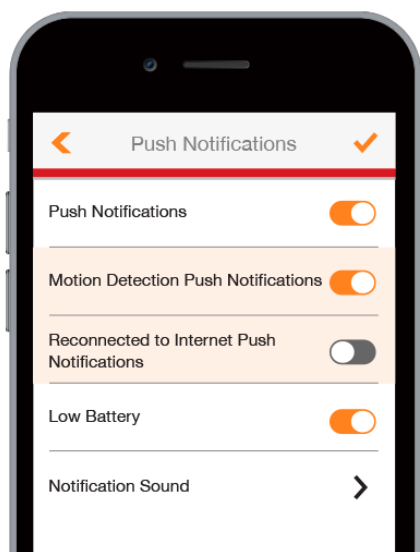
2-Way Audio For Listening and Talking

Listen and talk to someone who's at the door with the IC-6220DC 2-Way audio feature. Always keep eyes on your gateway environment and build up immediately communication from anywhere. No worries to miss any important packages or notifications.



Smart EdiLife

Say goodbye to inconvenient and complicated setting procedures. Only a couple of taps on your smartphone and the free EdiLife app allows you to view live videos, receive push notifications, and listen or talk to someone at your door. In addition, you can connect some of compatible Edimax smart products such as network cameras or smart plugs in a few simple steps, to access them remotely with mobile devices all of the time.



Receive video alerts or push notification while detecting motion



Listen to exterior sounds



Talk to someone who's at the door



Setup for connecting IC-6220DC

Free Cloud Storage

Recorded videos can be saved, maintained, managed and backed up in the cloud for free and accessed from anywhere on the Internet. Just select your favorite cloud storage such as Google Drive or Dropbox and keep your video recordings safe for as long as you like, with support for NAS too.

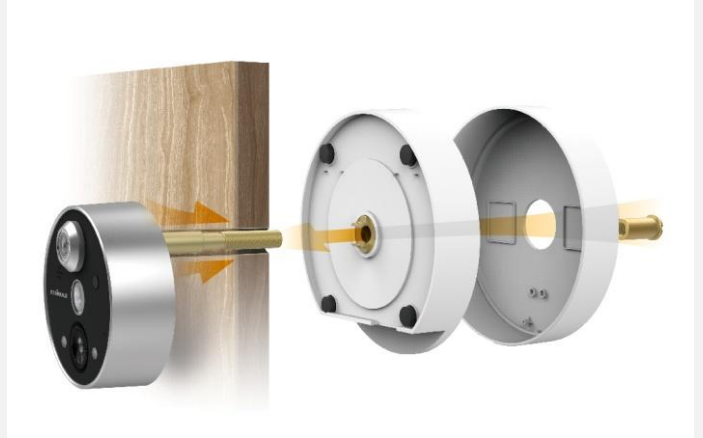


Easy Installation

There's no worries about door compatibility, since the IC-6220DC's unique design fits the vast majority of door peepholes and still maintains the original peephole functionality. Easily install it by yourself with a few quick steps. It's just that friendly.

Quickly Self-Installed Tips

1. Take out the existing peephole viewer
2. Install the outdoor unit through your peephole
3. Attach the indoor unit on the other side

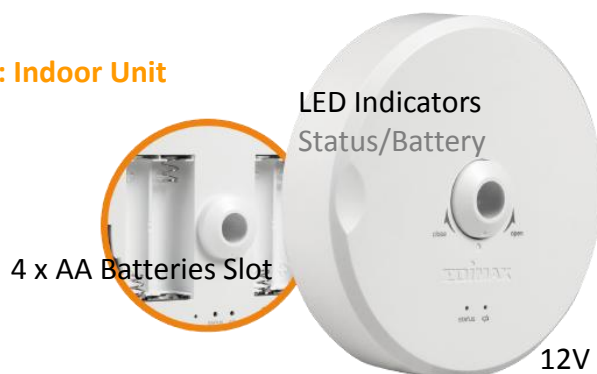


Interface Diagram

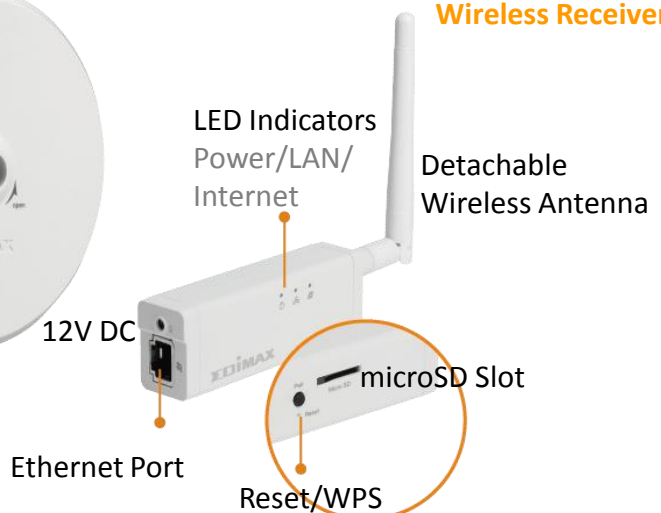
Camera : Outdoor Unit



Camera : Indoor Unit



Wireless Receiver



Specifications

IC-6220DC Smart Wireless Peephole Network Camera

Dimensions	<ul style="list-style-type: none"> • Camera Viewer : Φ75 x 25.5mm(D), the bolt excluded. • Camera Battery Unit: Φ120 x 32.5mm(D) • Wireless Receiver: 105mm(H) x 30.5mm(W)x 21mm (D)
Camera	<ul style="list-style-type: none"> • Min Illumination: Daylight < 5 Lux to turn on IR light, 0 Lux when IR on • Sensor: 1/6.5" CMOS • Lens: 2.59mm / F2.8 • Viewing Angle: Digital 90° / Peephole 150° • Night View: IR LED * 2, up to 3 meters (1.5M for clear image)
Connectivity	<ul style="list-style-type: none"> • IEEE 802.3/802.3u • 2.4G FHSS / 1 detachable antenna
Video	<ul style="list-style-type: none"> • MJPEG video compression • 640 x 480 up to 15 fps / 320 x 240 up to 30 fps • Resolution: VGA (640 x 480), QVGA (320 x 240), • Frame rate: 5, 10, 15, 20, 24 or 30 fps
Audio	<ul style="list-style-type: none"> • Built-in microphone & speaker • Two-way audio
Management	<ul style="list-style-type: none"> • EdiLife: free mobile app for iPhone, iPad & Android • EdiView Finder: web management interface for Windows/Mac • Firmware upgradable
Features	<ul style="list-style-type: none"> • PIR sensor, motion/sound detection triggered recording and alerts to MicroSD/SDHC card, email and FTP • Supports 64G microSD/SDHC card slot for local storage • Extend free cloud storage to personal accounts or other 3rd party storage options
Power	<ul style="list-style-type: none"> • Wireless Receiver- 12VDC/1A • Camera: AA Battery x 4
Operating Conditions	<ul style="list-style-type: none"> • 0–40°C, Humidity: 20–80% RH (non-condensing)



*Free cloud storage to personal Google Drive, Dropbox or other 3rd party accounts. Edimax reserves the right to extend or change 3rd party list.

*Actual viewing resolution and frame rate of network cameras depend on connection speed.

*Maximum performance, actual data rates, and coverage will vary depending on network conditions and environmental factors. Product specifications and design are subject to change without notice.

Copyright © 2016 Edimax Technology Co. Ltd. All rights reserved.