



IEC  
**LOCK**

## IEC Appliance Outlet



### Features & Benefits

- Snap-in mounting from front
- Solder terminal or quick connect from single terminal
- Class 1 Protection
- Integral plug retention feature

## IEC209 - IEC Lock Appliance Outlet



Unique patented lockable female C19 IEC connectors and outlets guard against accidental disconnection of any standard C20 Inlet.

Protects appliances that are vulnerable to vibration by preventing accidental removal.

**WES Australiasia, 84-90 Parramatta Road, Summer Hill, NSW 2130, Australia**

Telephone: (02) 9797 9866  
E-mail: [sales@wes.net.au](mailto:sales@wes.net.au)

Fax: (02) 9716 6015  
Website: [www.wes.com.au](http://www.wes.com.au)



**IEC  
LOCK™**

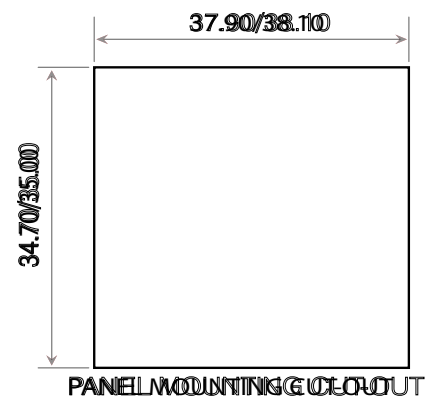
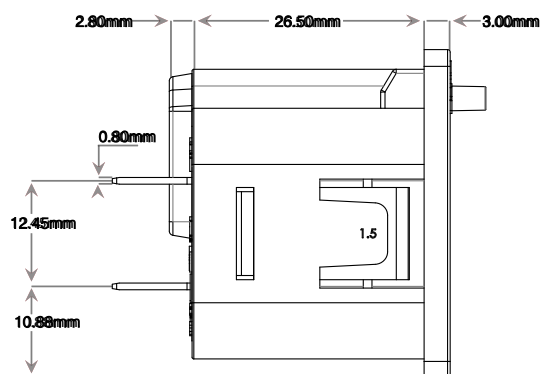
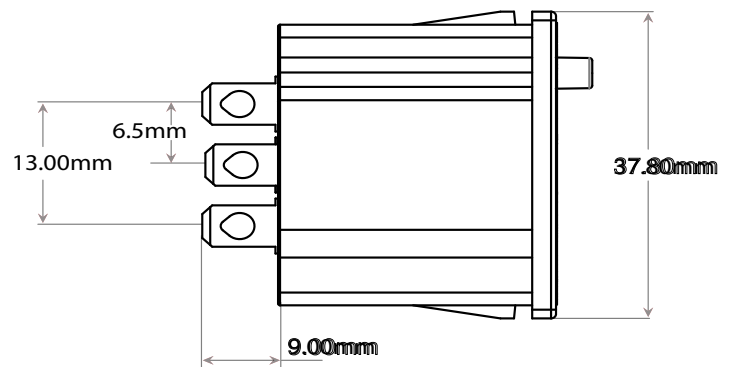
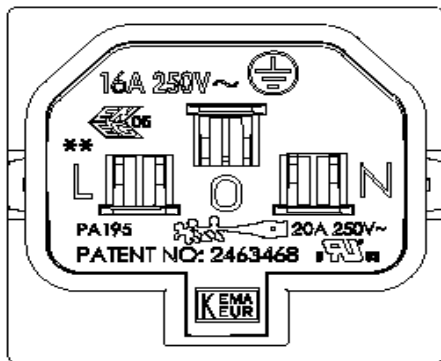
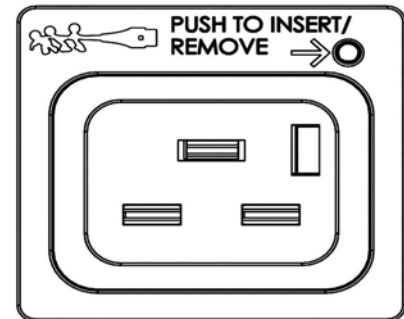
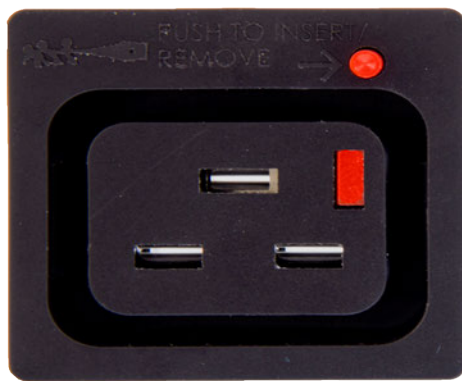
## IEC Appliance Outlet

### Product Range

6.3mm Wide Terminal Type

IEC209

C19 Appliance Outlet, 6.3 Terminal, 1.5mm Panel Thickness



\*\* Denotes outlet finish, either Black (BK) or White (WH). Errors & Omissions excluded. Specification is subject to change without notice.

V2.0

**WES Australiasia, 84-90 Parramatta Road, Summer Hill, NSW 2130, Australia**

Telephone: (02) 9797 9866  
E-mail: sales@wes.net.au

Fax: (02) 9716 6015  
Website: www.wes.com.au



## IEC Appliance Outlet

### Technical Specification

#### IEC Appliance Outlets

Rating	16A/250V AC	
Insulation Resistance	10Ω (500V DC, 1 Min)	
Dielectric Strength	2KV (50Hz 1Min) to accessible surfaces	
Lock Retention	>100N	
Materials	Face	Polyamide 66 (PA66) - To RAL Colour 9004 (Signal Black) Gloss Finish
	Back Cover	Polyamide 66 (PA66) - To RAL Colour 9004 (Signal Black) Gloss Finish
	Contacts	Tin Plated Copper Alloy (CuSn5 PB102 1/2 Hard Phosphor Bronze )
	Push Button	Polyamide 6 - To Ral Colour 3020 (Traffic Red)
	Spring	Steel (Zinc Plated, Clear Passivate and de-embrittle)
	Locking Tab	Plated Steel (CS70 harden to vickers 430/500) Nickel Plate 2-4 Microns

#### Patent

UK Number	2463468
EU Number	09787171.9
Russian Federation	2474020
Canadian Number	2,734,113
HK Number	HK1141901
Chinese Number	CN 102150330 A

#### Standards & Approvals

Standards	IEC / EN 60320-1:2001 + A1: 2007, IEC / EN 60320-2-2:1998
	UL 498
	CSA C22.2 No 182.3-M1987

#### Approvals

16A



20A

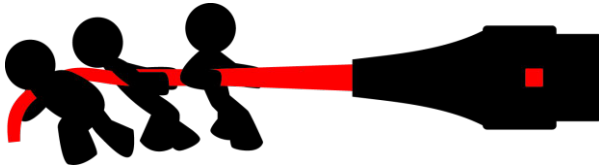


Errors & Omissions excluded. Specification is subject to change without notice.

**WES Australiasia, 84-90 Parramatta Road, Summer Hill, NSW 2130, Australia**

Telephone: (02) 9797 9866  
E-mail: [sales@wes.net.au](mailto:sales@wes.net.au)

Fax: (02) 9716 6015  
Website: [www.wes.com.au](http://www.wes.com.au)



**Scolmore International Ltd**

1 Scolmore Park; Landsberg  
Lichfield Road Industrial Estate  
Tamworth, Staffordshire B79 7XB

t: 01827 63454  
f: 01827 63362  
e: sales@scolmore.com  
w: www.scolmore.com

**DECLARATION OF CONFORMITY**

1. *Issuer Name:* Scolmore International Limited
2. *Issuer Address:* 1 Scolmore Park, Landsberg,  
Lichfield Road Industrial Estate,  
Tamworth, Staffordshire, B79 7XB
3. *Object(s) of Declaration:* C19
  - a. *Group* IEC Lock Socket
  - b. *Model(s) Number* Nomenclature – PA195, followed by 0, 2, or 3, followed by 10, 12, or 15, followed by BK or WH, END OR followed by 1, or A.

4. *In accordance with the following legislation:*

Document No	Title
2006/95/EC	Low Voltage Directive

5. *All products contained within the aforementioned, comply with the relevant standards and/or requirements listed below:*

IEC / EN 60320-1:2001 + A1: 2007

IEC / EN 60320-2-2:1998

UL498

The declaration of conformity is made in relation to the associated tests carried out and verified by our suppliers and their authorised test facilities:

In conjunction with the above all manufacture and process controls are in accordance with ISO 9001:2008

Signed at, for and on behalf of: Scolmore International Limited

Steven Bettson BSc - Senior Technical Support Engineer

**C € 13**