



AC1200 High Speed
Max. speed up to 300Mbps (2.4GHz) & 867Mbps (5GHz)



Dual-Band
Flexible Concurrent Dual-Band Wi-Fi Connectivity



Multi-Function USB Port
Storage & FTP file or printer sharing



Multiple SSID with VLAN
Group and manage users and network resources



Plug & Play
Zero configuration setup, no CD required

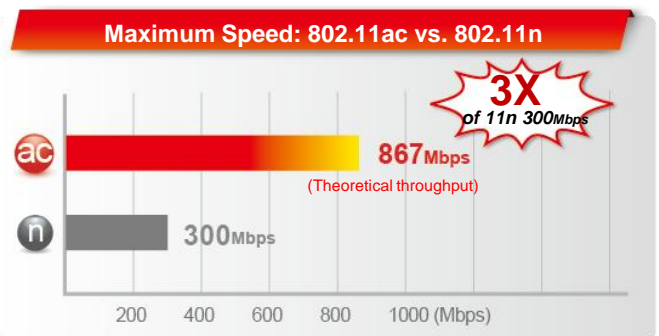
AC1200 Gigabit Dual-Band Access Point with USB Port

Overview

Modern homes and businesses need high-performance, reliable and secure Wi-Fi. The EW-7478APC features the latest 11ac standard to upgrade your existing 11n to better, faster Wi-Fi and a USB port for file & printer-sharing on your network. Attach a USB hard-drive for central NAS (Network Attached Storage) access on any device and stream content at lightning fast lag-free 11ac speeds. It's a 5-in-1 device that can function as an access point, range extender, Wi-Fi router, Wi-Fi bridge or WISP and you can easily switch mode for your network environment with the smart iQ Setup wizard.

AC1200 High Speed Wi-Fi

Supports the IEEE 802.11ac wireless standard, meaning much higher data rates on the 5GHz band. With 300Mbps speeds at 2.4GHz and 867Mbps at 5GHz, the EW-7478APC is ideal for HD video streaming and large file transfers.



Concurrent Dual-Band Wi-Fi Connectivity

The Edimax EW-7478APC router provides simultaneous 2.4GHz (802.11n) and 5GHz (802.11ac) wireless network connectivity for maximum flexibility of use.

5GHz (Up to 867Mbps)
Interference-Free
HD Video and Gaming

Online Gaming HD Video Streaming VoIP Calling

Gigabit 1000 Mbps
10X Faster

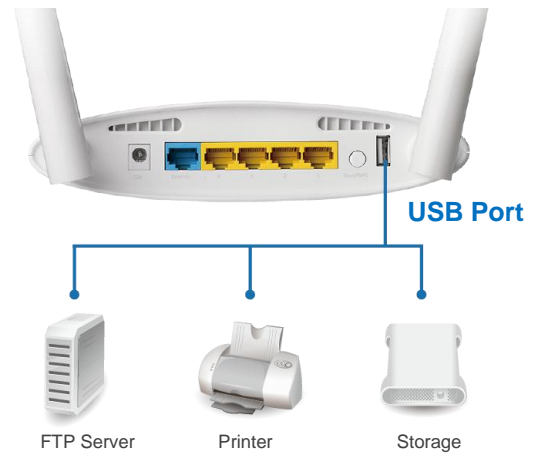
Concurrent Dual-Band

2.4GHz (Up to 300Mbps)
More Supported Devices
Basic Internet Applications

Web Browsing Online Chat Email and Downloading

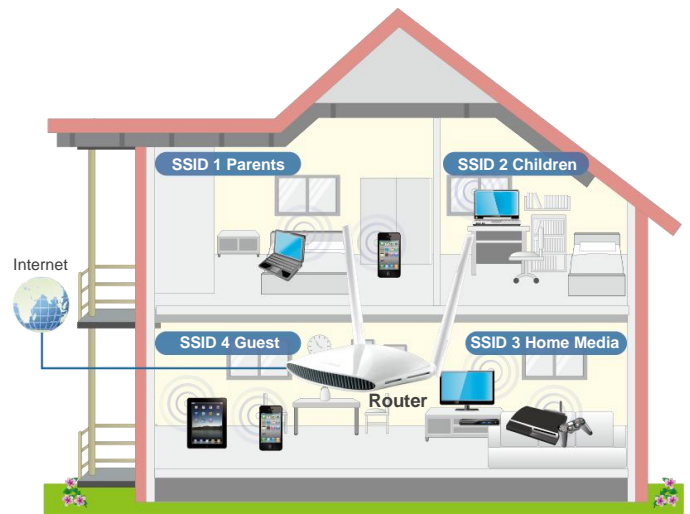
Multi-Function USB Port

Connect a USB hard-drive and enjoy your own private cloud storage. Keep content on your central storage and access it from any device on your network. Including movie and TV streaming to PCs or smart TVs, or regular backups of vital data. And with the built-in VPN function you can even access your network remotely when you're away from home. It can also be used with an FTP server or printer, so any devices on your network can print over your Wi-Fi.



Multi-SSID with VLAN Support*

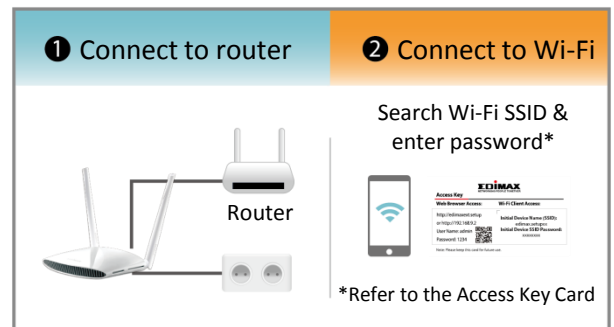
Multi-SSID enables users to configure up to eight separate SSIDs (2.4GHz x 4 and 5GHz x 4) in order to group and manage users according to your requirements. In addition, each SSID can be assigned a different VLAN ID, so users with multiple VLANs can manage the network access level of each SSID – ensuring security and protecting confidential or critical network resources. (*Access point mode only)



Plug & Play

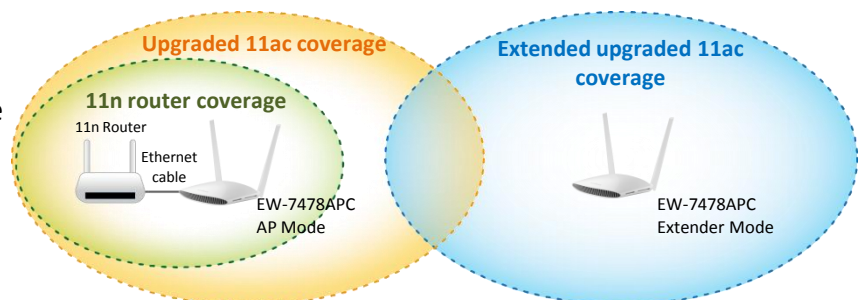
Just connect the EW-7478APC to your router with an Ethernet (RJ45) cable. There's zero configuration and no CD required. (*Access point mode only.)

Just Plug and Play



Easy Upgrade for Your 11n Home Router to 11ac

Just plug in the Edimax EW-7478APC to upgrade your single-band 2.4GHz Wi-Fi to dual-band Wi-Fi with better coverage. Without replacing your router and with zero configuration required. (*Access point mode only.)



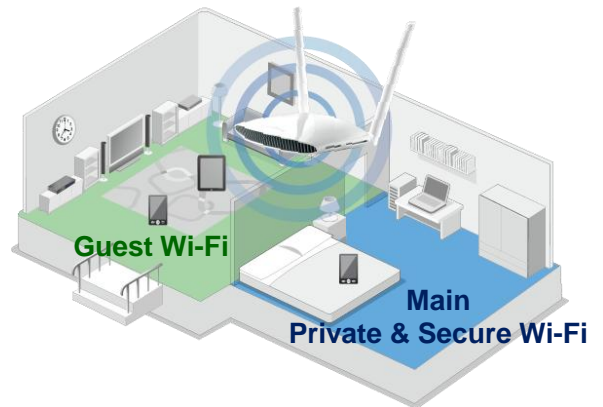
5-in-1 Access Point, Range Extender, Wi-Fi Router, Wireless Bridge and WISP

The EW-7478APC can work as access point, range extender, Wi-Fi router, Wi-Fi bridge or WISP. Just configure the mode you need for your network environment using the smart iQ Setup wizard.



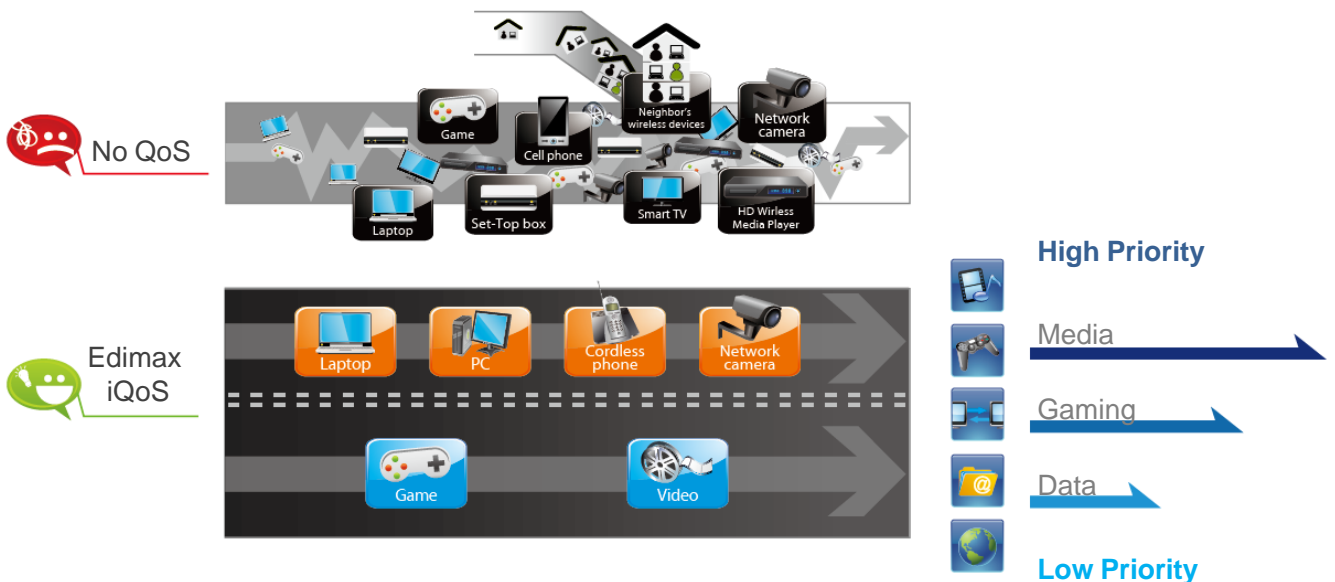
Guest Network*

Supports a guest network to provide connectivity while isolating guests from your primary network. (*Wi-Fi router/range extender/WISP mode only)



Edimax's Revolutionary iQoS

iQoS is Edimax's solution for a quicker, easier, and more effective way to manage Internet bandwidth. While Quality of Service (QoS) functionality is a common feature in routers across the market, typically only advanced users have the knowledge required to set up the complex parameters. Edimax though has redesigned QoS with user-friendliness and accessibility in mind. A simple and intuitive user interface allows users to arrange bandwidth priority settings in just a few clicks. With iQoS, you can enjoy gaming, video streaming, VoIP applications and BT clients at the same time without the usual nightmare of lag and interruptions. An original, efficient and effective means of managing your Internet bandwidth.



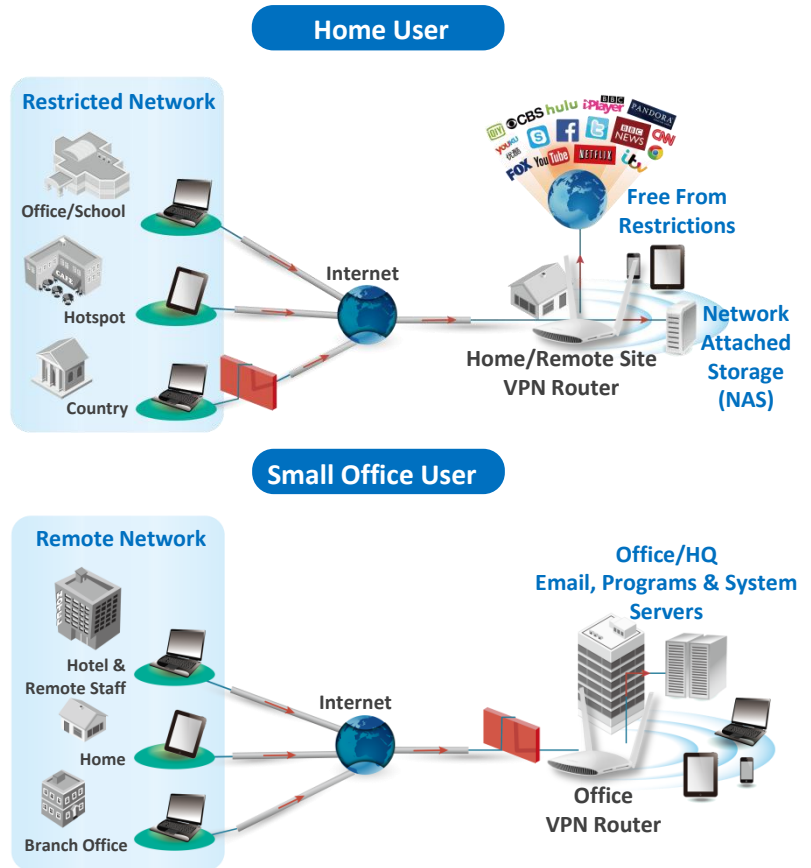
VPN Remote Network Access for Privacy & Security

Built-in Virtual Private Network* (VPN) support for easy VPN access on all your devices. VPNs enable you to access secure, remote networks from anywhere and can offer privacy and security online. Log in to your work/school network remotely or avoid geoblocking, protect privacy on public Wi-Fi and bypass Internet censorship.

Home Users: Avoid regional restrictions and access geoblocked content such as Netflix or iPlayer from anywhere. Ensure your privacy and anonymity online and defeat censorship and other location-based content restrictions. You can also remotely access your home network when you're away, and use your encrypted VPN for security when out and about using potentially unsafe public Wi-Fi hotspots.

Small Office Users: Enable your employees to access company resources remotely such as email, documents saved on the company server and any programs/systems when they are outside the office.

(*Wi-Fi router mode only)



FEATURES

- **AC1200 High-Speed Concurrent Dual-Band:** Max speed up to 300Mbps (2.4GHz) and 867Mbps (5GHz) with 802.11ac Wi-Fi standard and backward compatible with 802.11a/b/g/n standards.
- **Multi-Function USB Port:** Storage & FTP file or printer sharing as your own private, secure cloud.
- **Multiple SSIDs with VLAN:** Supports up to 8 SSIDs (2.4GHz x 4 & 5GHz x 4) and provides security to protect confidential or critical network resources (Access point mode only).
- **Plug and Play:** Zero configuration setup with no CD required. Just connect the EW-7478APC to your router with an Ethernet cable.
- **Easy 11ac Upgrade:** Upgrade your single-band 2.4GHz Wi-Fi to 11ac dual-band Wi-Fi for better coverage and faster Wi-Fi speed with zero configuration.
- **5 Modes in 1:** Access point, range extender, Wi-Fi router, Wi-Fi bridge or WISP.
- **Guest Network:** Provides secure, private connectivity while isolating guests from your primary network (Wi-Fi router/range extender/WISP mode only).
- **iQoS Bandwidth Management:** Efficient Internet bandwidth management.
- **VPN (Virtual Private Network):** Access secure remote networks from anywhere, protect privacy on public Wi-Fi and bypass Internet censorship (Wi-Fi router mode only).

SPECIFICATIONS

EW-7478APC AC1200 Gigabit Dual-Band Access Point with USB Port

HARDWARE

Port	<ul style="list-style-type: none"> • 1 x RJ-45 10/100/1000Mbps WAN port • 4 x RJ-45 10/100/1000Mbps LAN port • 1 x USB 2.0 port
Button	<ul style="list-style-type: none"> • WPS/Reset buttons
LED Indicator	<ul style="list-style-type: none"> • Power, Internet, WLAN, USB
Antenna	<ul style="list-style-type: none"> • 2 x Dual-band fixed antennas
Memory	<ul style="list-style-type: none"> • 8MB NOR Flash • 64MB RAM
Power Adapter	<ul style="list-style-type: none"> • DC 12V, 1.5A
Dimensions (W x D x H)	<ul style="list-style-type: none"> • 190.2mm x 172mm x 42mm
Weight	<ul style="list-style-type: none"> • 322g

WIRELESS

Standards	<ul style="list-style-type: none"> • 802.11 a/b/g/n/ac
Frequency	<ul style="list-style-type: none"> • 5GHz and 2.4GHz concurrent dual-band
Maximum Data Speed	<ul style="list-style-type: none"> • 5GHz: 867Mbps • 2.4GHz: 300Mbps
Receive Sensitivity	<ul style="list-style-type: none"> • 5GHz: <ul style="list-style-type: none"> - 11a(6Mbps): -90±2dBm - 11a(54Mbps): -71±2dBm - 11n(20MHz, MCS7): -69±2dBm - 11n(40MHz, MCS7): -65±2dBm - 11ac(80MHz, MCS9): -55±2dBm • 2.4GHz: <ul style="list-style-type: none"> - 11b(1Mbps): -91±2dBm - 11b(11Mbps): -87±2dBm - 11g(54Mbps): -71±2dBm - 11n(20MHz, MCS7): -68±2dBm - 11n(40MHz, MCS7): -65±2dBm
Output Power	<ul style="list-style-type: none"> • 5GHz: <ul style="list-style-type: none"> - 11a(6Mbps): 18±1.5dBm - 11a(54Mbps): 14±1.5dBm - 11n(20MHz, MCS7): 13±1.5dBm - 11n(40MHz, MCS7): 13±1.5dBm - 11ac(80MHz, MCS9): 13±1.5dBm • 2.4GHz: <ul style="list-style-type: none"> - 11b(1Mbps): 18±1.5dBm - 11b(11Mbps): 16±1.5dBm - 11g(54Mbps): 14±1.5dBm - 11n(20MHz, MCS7): 13±1.5dBm - 11n(40MHz, MCS7): 13±1.5dBm
Guest Network	<ul style="list-style-type: none"> • 5GHz guest network x 1 • 2.4GHz guest network x 1
Security	<ul style="list-style-type: none"> • 64/128-bit WEP, WPA and WPA2 security • Hardware & software WPS configuration • QoS for critical operations, SPI anti-DoS firewall

SPECIFICATIONS

EW-7478APC AC1200 Gigabit Dual-Band Access Point with USB Port

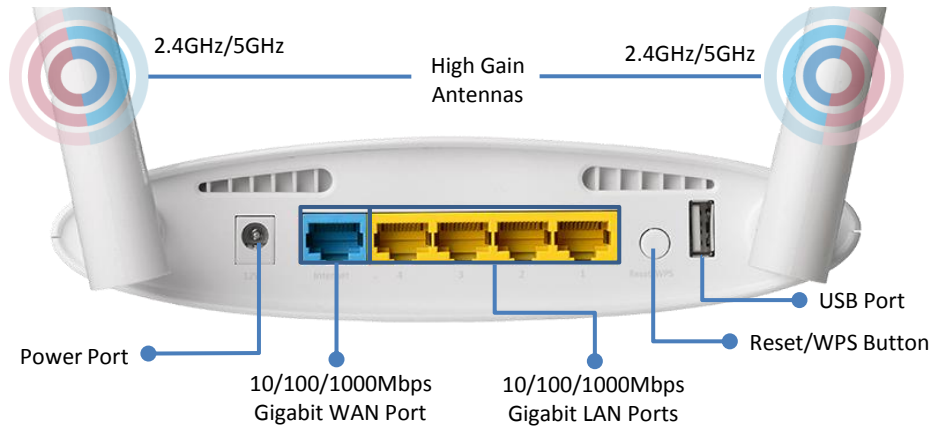
SOFTWARE FEATURES

Management	<ul style="list-style-type: none"> • Multi-language user interface • Remote management, access control • System status and security log • Firmware upgradable (Fault tolerance firmware upgrade) • Smart iQ Setup, no CD required
WAN	<ul style="list-style-type: none"> • Protocol: PPPoE, Static IP, Dynamic IP, PPTP and L2TP • Supports WISP connection mode • Supports RJ-45 cable/xDSL modem
iQoS	<ul style="list-style-type: none"> • Intelligent Quality of Service for smart bandwidth management, WMM
VPN Pass-Through	<ul style="list-style-type: none"> • IPSec, PPTP
Port Forwarding	<ul style="list-style-type: none"> • Virtual Server, IGMP Proxy, UPnP, DMZ
DHCP	<ul style="list-style-type: none"> • Server, Client, DHCP Client List, Address Reservation
Dynamic DNS	<ul style="list-style-type: none"> • DynDns, DHS, Zoneedit
Access Control	<ul style="list-style-type: none"> • IP/Mac Filter
Firewall Security	<ul style="list-style-type: none"> • DoS, SPI Firewall, IP Address Filter
Protocols	<ul style="list-style-type: none"> • Supports IPv4
Guest Network	<ul style="list-style-type: none"> • 5GHz guest network x 1, 2.4GHz guest network x 1 (Wi-Fi router/range extender/WISP mode only)
SSID	<ul style="list-style-type: none"> • Up to 10 SSIDs (2.4GHz x 5 and 5GHz x 5) in access point mode (Each band with 1 main SSID and 4 multiple SSIDs) • Up to 4 SSIDs (2.4GHz x 2 and 5GHz x 2) in Wi-Fi router/range extender/WISP mode (Each band with 1 main SSID and 1 guest SSID)
Schedule	<ul style="list-style-type: none"> • SSID schedule control
Operation Mode	<ul style="list-style-type: none"> • Access point, range extender, Wi-Fi router, Wi-Fi bridge or WISP

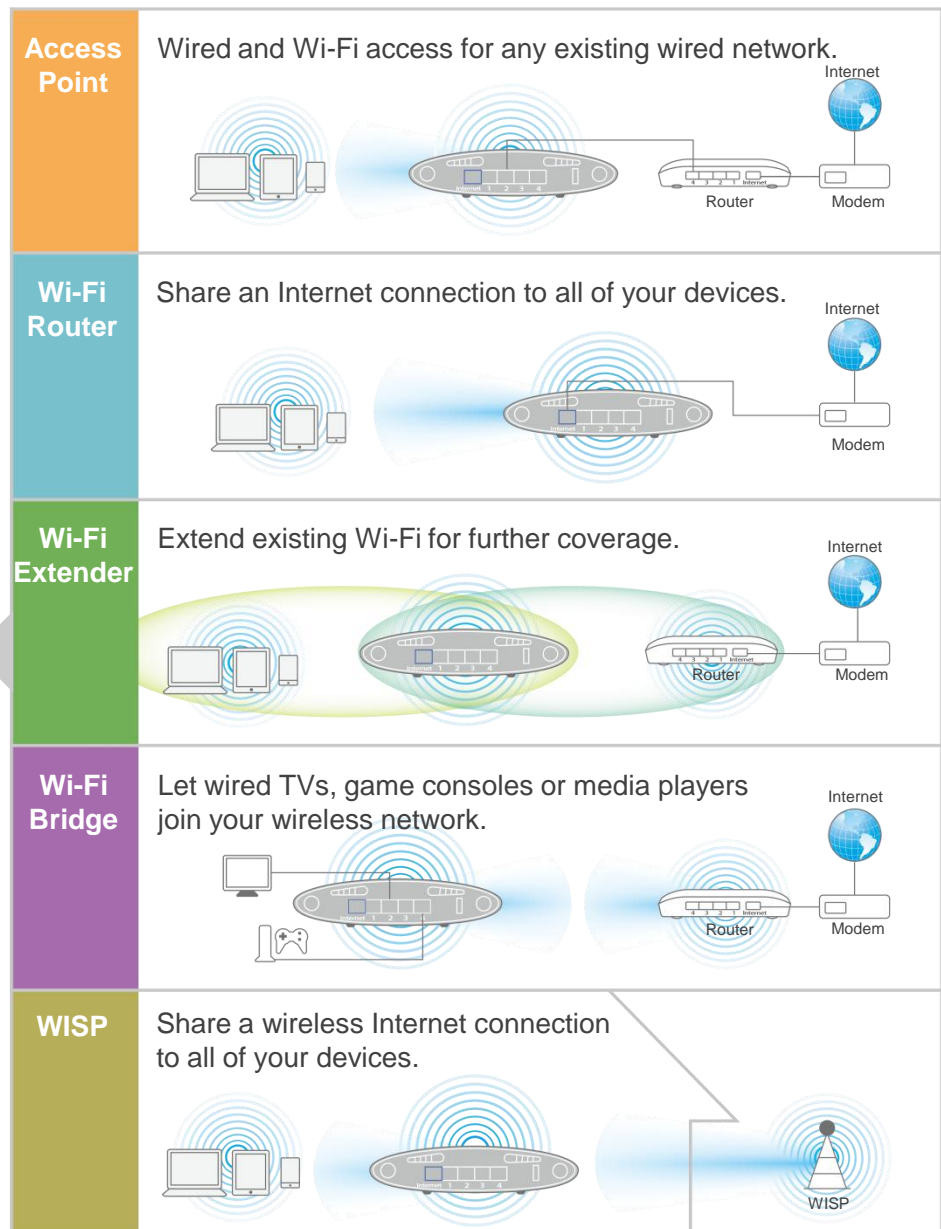
OTHERS

Certification	<ul style="list-style-type: none"> • CE, FCC, RoHS
Environmental Condition	<ul style="list-style-type: none"> • Operating humidity: 10-90% (non-condensing) • Operating temperature: 32 - 104°F (0 - 40°C)
System Requirement	<ul style="list-style-type: none"> • Cable or xDSL Internet connection (RJ-45 cable modem or RJ-45 ADSL modem) • Computer (with Fast Ethernet adapter or wireless adapter) running Windows, Mac OS or Linux • Smartphone, tablet or laptop running iOS 4 or Android 4 and above • Web browser (Internet Explorer, Google Chrome, Firefox, Opera or Safari)
Package Content	<ul style="list-style-type: none"> • EW-7478APC Access Point • Quick installation guide • CD-ROM (including setup wizard, multi-language quick installation guide and user manual) • Power adapter • Ethernet cable

HARDWARE INTERFACE



APPLICATION DIAGRAM



*Maximum performance, actual data rates, and coverage will vary depending on network conditions and environmental factors. Product specifications and design are subject to change without notice.

Copyright © 2016 Edimax Technology Co. Ltd. All rights reserved.