






Gemini RG21S



- 
**AC2600**  
Max. speed up to 800Mbps (2.4GHz) & 1733Mbps (5GHz)
- 
**MU-MIMO**  
Simultaneous data to multiple devices
- 
**Smart Roaming**  
Always connected Wi-Fi with add-on Edimax extender
- 
**VPN**  
Remote network access with security & privacy
- 
**Easy Setup**  
Use a smart phone/tablet, no CD required

# AC2600 Home Roaming Wi-Fi Router

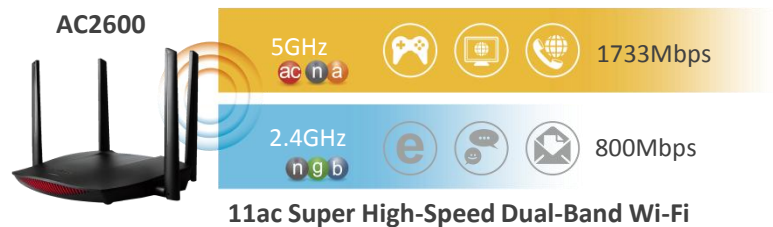
## Introduction

For anyone who's experienced video streaming interruptions or online gaming lag, the Edimax Gemini RG21S is designed to ensure games and movies run smooth and fast. With the latest MU-MIMO technology and a host of other features the RG21S offers enormous improvements in Wi-Fi speed, quality and reliability. Featuring AC2600 high speed Wi-Fi and MU-MIMO technology for simultaneous connections to multiple devices, as well as smart-roaming support – the Gemini RG21S brings better performance, lower latency and super dependable high-speed Wi-Fi for your movies and games.

It's an ultra-fast 802.11ac Wi-Fi router with dual-band data rates of 1733Mbps at 5GHz and 800Mbps at 2.4GHz perfect for smooth 4K streaming and lightning fast file transfers. MU-MIMO (Multiple User - Multiple Input Multiple Output) technology serves multiple devices simultaneously and is ideal for busy networks, providing better efficiency and less buffering. And with Edimax add-on roaming devices, RE11S range extender, the RG21S's smart roaming function automatically detects and switches your device to the best available Wi-Fi signal – for a seamless Wi-Fi experience as you move around your home.

## AC2600 Super High-Speed Wi-Fi

Next generation Wi-Fi router with 802.11a/b/g/n/ac standards and speeds of up to 800Mbps at 2.4GHz and 1733Mbps at 5GHz. Upgrade your home Wi-Fi to super high-speed 802.11ac and enjoy faster video streaming, online gaming and data transfers.



## Multi-Device Efficiency

MU-MIMO (Multiple User - Multiple Input Multiple Output) technology serves multiple devices simultaneously instead of one at a time, for better performance and efficiency on networks with multiple devices.



Traditional SU-MIMO  
Single device at a time

Multiple devices at the same time

**Smarter Wi-Fi Roaming**

A seamless connection while you move around your home without hassle of switching SSIDs (network name). Your extender and router use the same SSID for seamless roaming\* that automatically switches your Wi-Fi device to the best signal. (\*Use with an Edimax Gemini RE11S add-on extender for always-connected Wi-Fi.)

RE11S Roaming Extender  
Network SSID = Edimax



RG21S Roaming Router  
Network SSID = Edimax

**Flexible Concurrent Dual-Band Connectivity**

Providing simultaneous 2.4GHz (802.11n) and 5GHz (802.11ac) wireless network connectivity for maximum flexibility of use and the best of both worlds.

**5GHz (Up to 1733Mbps)**  
Interference-Free  
HD Video and Gaming

Online Gaming    HD Video Streaming    VoIP Calling

**Concurrent  
Dual-Band**

**2.4GHz (Up to 800Mbps)**  
More Supported Devices  
Basic Internet Applications

Web Browsing    Online Chat    Email and Downloading

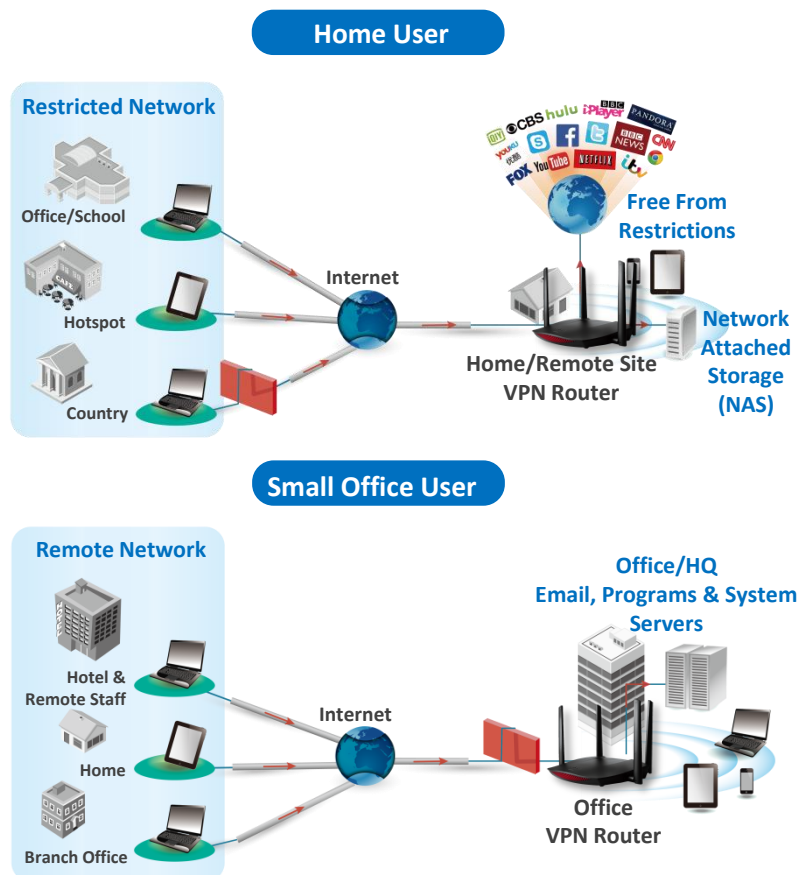
**AC2600: 1733Mbps (5GHz) + 800Mbps (2.4GHz)**

**VPN Remote Network Access for Privacy & Security**

Built-in Virtual Private Network (VPN) support for easy VPN access on all your devices. VPNs enable you to access secure, remote networks from anywhere and can offer privacy and security online. Log in to your work/school network remotely or avoid geoblocking, protect privacy on public Wi-Fi and bypass Internet censorship.

**Home Users:** Avoid regional restrictions and access geoblocked content such as Netflix or iPlayer from anywhere. Ensure your privacy and anonymity online and defeat censorship and other location-based content restrictions. You can also remotely access your home network when you're away, and use your encrypted VPN for security when out and about using potentially unsafe public Wi-Fi hotspots.

**Small Office Users:** Enable your employees to access company resources remotely such as email, documents saved on the company server and any programs/systems when they are outside the office.



### Guest Network

Supports a guest network to provide connectivity while isolating guests from your primary network. (Wi-Fi router mode only)



### Smart iQ Setup

Features iQ Setup for smart, automatic and quick installation with no CD required.



## FEATURES

- **AC2600 High-Speed Concurrent Dual-Band:** Max speed up to 800Mbps (2.4GHz) and 1733Mbps (5GHz) with 802.11ac Wi-Fi standard and backward compatible with 802.11a/b/g/n standards
- **Multi-Device (MU-MIMO):** Efficient MU-MIMO (Multiple User - Multiple Input Multiple Output) technology serves multiple devices simultaneously
- **Smart Roaming:** Always-connected Wi-Fi using an add-on Edimax Gemini RE11S extender for seamless, fast roaming Wi-Fi
- **IPv6 Supported:** Ready for the next Internet Protocol version set for global adoption, with more available IP addresses, easy management and stronger security for better network usability and user experiences
- **Multiple SSIDs:** Supports up to 10 SSIDs (2.4GHz x 5 & 5GHz x 5) and provides security to protect confidential or critical network resources (access point mode only)
- **Guest Network:** Provides secure, private connectivity while isolating guests from your primary network (Wi-Fi router mode only)
- **Smart iQ Setup:** Quick, smart and automatic web-based installation using a smartphone, tablet or computer with no CD required
- **Beamforming Technology:** Improved Wi-Fi performance with better range, reliability and coverage thanks to targeted, directional signals
- **2 Modes in 1:** Functions as either a Wi-Fi router or access point

## SPECIFICATIONS

### RG21S AC2600 Home Roaming Wi-Fi Router

#### HARDWARE

Interface	<ul style="list-style-type: none"> <li>• 1 x RJ-45 10/100/1000Mbps WAN port</li> <li>• 4 x RJ-45 10/100/1000Mbps LAN port</li> </ul>
Button	<ul style="list-style-type: none"> <li>• WPS/Reset buttons</li> </ul>
LED Indicator	<ul style="list-style-type: none"> <li>• Power</li> </ul>
Antenna	<ul style="list-style-type: none"> <li>• 8 x antennas (4 x detachable antennas: 2 x 2.4GHz and 2 x 5GHz &amp; 4 x internal antennas: 2 x 2.4GHz and 2 x 5GHz )</li> </ul>
Memory	<ul style="list-style-type: none"> <li>• 16MB NOR Flash</li> <li>• 256MB RAM</li> </ul>
Power Adapter	<ul style="list-style-type: none"> <li>• DC 12V, 1.5A</li> </ul>
Dimensions	<ul style="list-style-type: none"> <li>• 160(W)mm x 115(D)mm x 31(H)mm</li> </ul>
Weight	<ul style="list-style-type: none"> <li>• 170g</li> </ul>

#### WIRELESS

Standards	<ul style="list-style-type: none"> <li>• 802.11 a/b/g/n/ac</li> </ul>
Frequency	<ul style="list-style-type: none"> <li>• 5GHz and 2.4GHz concurrent dual-band</li> </ul>
Maximum Data Speed	<ul style="list-style-type: none"> <li>• 5GHz: 1733Mbps</li> <li>• 2.4GHz: 800Mbps</li> </ul>
Receive Sensitivity	<ul style="list-style-type: none"> <li>• 5GHz: <ul style="list-style-type: none"> <li>- 11a(6Mbps): -89±2dBm</li> <li>- 11a(54Mbps): -72±2dBm</li> <li>- 11n(20MHz, MCS7): -70±2dBm</li> <li>- 11n(40MHz, MCS7): -68±2dBm</li> <li>- 11ac(80MHz, MCS9): -56±2dBm</li> </ul> </li> <li>• 2.4GHz: <ul style="list-style-type: none"> <li>- 11b(1Mbps): -93±2dBm</li> <li>- 11b(11Mbps): -82±2dBm</li> <li>- 11g (6Mbps): -90±2dBm</li> <li>- 11g (54Mbps): -72±2dBm</li> <li>- 11n(20MHz, MCS7): -70±2dBm</li> <li>- 11n(40MHz, MCS7): -68±2dBm</li> </ul> </li> </ul>
Output Power	<ul style="list-style-type: none"> <li>• 5GHz: <ul style="list-style-type: none"> <li>- 11a(6Mbps): 17±1.5dBm</li> <li>- 11a(54Mbps): 15±1.5dBm</li> <li>- 11n(20MHz, MCS7): 15±1.5dBm</li> <li>- 11n(40MHz, MCS7): 15±1.5dBm</li> <li>- 11ac(80MHz, MCS9): 14±1.5dBm</li> </ul> </li> <li>• 2.4GHz: <ul style="list-style-type: none"> <li>- 11b (1Mbps): 17±1.5dBm</li> <li>- 11b (11Mbps): 17±1.5dBm</li> <li>- 11g (6Mbps): 17±1.5dBm</li> <li>- 11g (54Mbps): 15±1.5dBm</li> <li>- 11n (20MHz, MCS7): 15±1.5dBm</li> <li>- 11n (40MHz, MCS7): 15±1.5dBm</li> </ul> </li> </ul>
Guest Network	<ul style="list-style-type: none"> <li>• 5GHz guest network × 1</li> <li>• 2.4GHz guest network × 1</li> </ul>
Security	<ul style="list-style-type: none"> <li>• 64/128-bit WEP, WPA and WPA2 security</li> <li>• Hardware &amp; software WPS configuration</li> <li>• QoS for critical operations, SPI anti-DoS firewall</li> </ul>

## SPECIFICATIONS

### RG21S AC2600 Home Roaming Wi-Fi Router

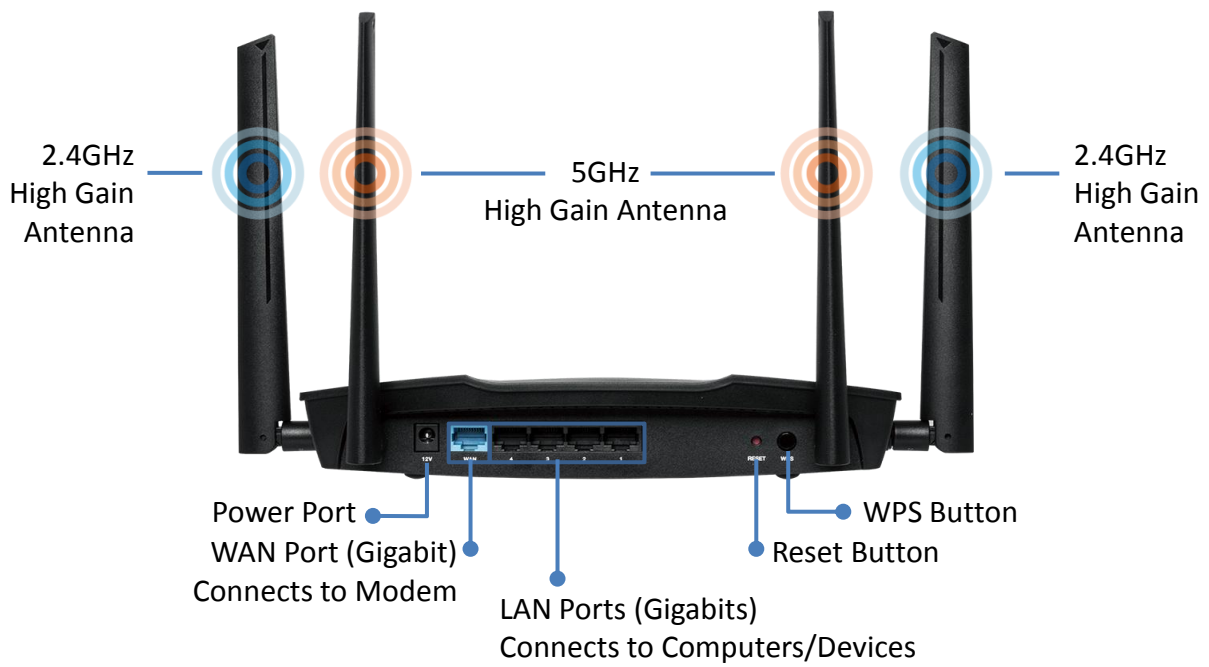
#### SOFTWARE FEATURES

Management	<ul style="list-style-type: none"> <li>• Multi-language user interface</li> <li>• Remote management, access control</li> <li>• System status and security log</li> <li>• Firmware upgradable</li> <li>• Smart iQ Setup, no CD required</li> </ul>
WAN	<ul style="list-style-type: none"> <li>• Protocol: PPPoE, Static IP, Dynamic IP, PPTP and L2TP</li> <li>• Supports RJ-45 cable</li> </ul>
VPN Pass-Through	<ul style="list-style-type: none"> <li>• IPSec, PPTP</li> </ul>
Port Forwarding	<ul style="list-style-type: none"> <li>• Virtual Server, IGMP Proxy, UPnP, DMZ</li> </ul>
DHCP	<ul style="list-style-type: none"> <li>• Server, Client, DHCP Client List, Address Reservation</li> </ul>
Dynamic DNS	<ul style="list-style-type: none"> <li>• DynDns, DHS, Zoneedit</li> </ul>
Access Control	<ul style="list-style-type: none"> <li>• IP/Mac Filter</li> </ul>
Firewall Security	<ul style="list-style-type: none"> <li>• DoS, SPI Firewall, IP Address Filter</li> </ul>
Protocols	<ul style="list-style-type: none"> <li>• Supports IPv4 and IPv6</li> </ul>
Guest Network	<ul style="list-style-type: none"> <li>• 5GHz guest network x 1, 2.4GHz guest network x 1</li> </ul>
SSID	<ul style="list-style-type: none"> <li>• Up to 4 SSIDs (2.4GHz x 2 and 5GHz x 2) in Wi-Fi router mode (Each band with 1 main SSID and 1 guest SSID)</li> <li>• Up to 10 SSIDs (2.4GHz x 5 and 5GHz x 5) in access point mode (Each band with 1 main SSID and 4 multiple SSIDs)</li> </ul>
Schedule	<ul style="list-style-type: none"> <li>• Wi-Fi scheduling</li> </ul>
Operation Mode	<ul style="list-style-type: none"> <li>• Wi-Fi router and access point</li> </ul>

#### OTHERS

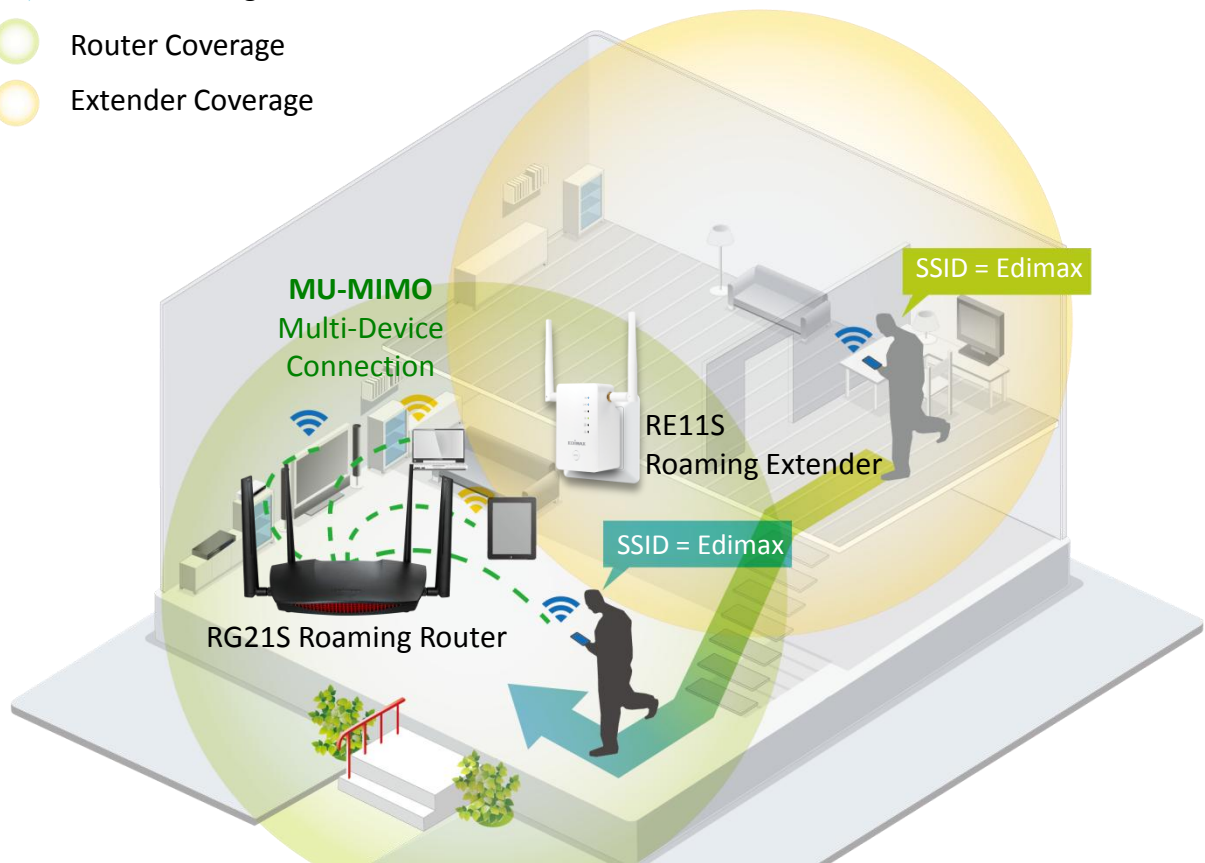
Certification	<ul style="list-style-type: none"> <li>• CE, FCC, RoHS</li> </ul>
Environmental Condition	<ul style="list-style-type: none"> <li>• Operating humidity: 10 - 90% (non-condensing)</li> <li>• Operating temperature: 32 - 104°F (0 - 40°C)</li> </ul>
System Requirement	<ul style="list-style-type: none"> <li>• Cable or xDSL Internet connection (RJ-45 cable modem or RJ-45 ADSL modem)</li> <li>• Computer (with Fast Ethernet adapter or wireless adapter) running Windows, Mac OS or Linux</li> <li>• Smartphone, tablet or laptop running iOS 4 or Android 4 and above</li> <li>• Web browser (Internet Explorer, Google Chrome, Firefox, Opera or Safari)</li> </ul>
Package Content	<ul style="list-style-type: none"> <li>• RG21S Wi-Fi router</li> <li>• Quick installation guide</li> <li>• CD-ROM (including setup wizard, multi-language quick installation guide and user manual)</li> <li>• Power adapter</li> <li>• Ethernet cable</li> </ul>

**HARDWARE INTERFACE**



**APPLICATION DIAGRAM**

- MU-MIMO, Multi-Device Connected Simultaneously
- ➔ Wi-Fi Roaming
- Router Coverage
- Extender Coverage



\*Maximum performance, actual data rates, and coverage will vary depending on network conditions and environmental factors. Product specifications and design are subject to change without notice.