



pluto



PLUTO satisfies a demand for power and data connectivity, in informal spaces, in a way that no other module has done before. Perfectly suited to breakout areas, smaller meeting rooms and coffee tables - PLUTO makes sharing power a pleasure. Studies show that people work far more effectively in small groups and indeed new ideas come from people working in pairs. With over 25 years experience in the market, and as leaders in terms of design and practicality, Elsafe have developed Pluto to match our customers' desire for a solution that fits these new ways of working.

With 3 outlet positions, PLUTO is perfect for a small team to power/charge their devices using conventional mains plugs.



pluto^o
because life isn't one sided



1300elsafe

sales@elsafe.com.au

www.elsafe.com.au

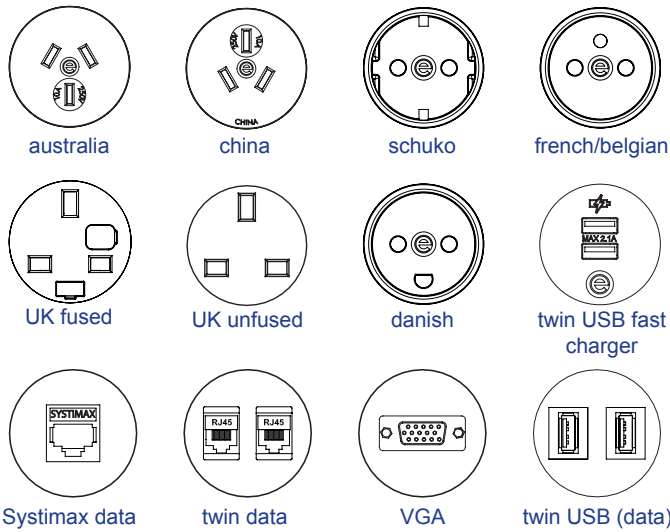
Elsafe Australia Pty Ltd

always innovating



Australia - New Zealand - United Kingdom - Europe - Middle East - Asia

Modular components for PLUTO⁺



Features

Configuration:

Power only / Data only / Combined (Power & Data/AV)
Internal segregation between Power and Data/AV in combined PLUTOs

Insulation:

Re-inforced insulation

Testing:

100% testing - continuity, polarity, insulation & earth

Rating

PLUTO with Wieland GST entry are rated to 20Amp

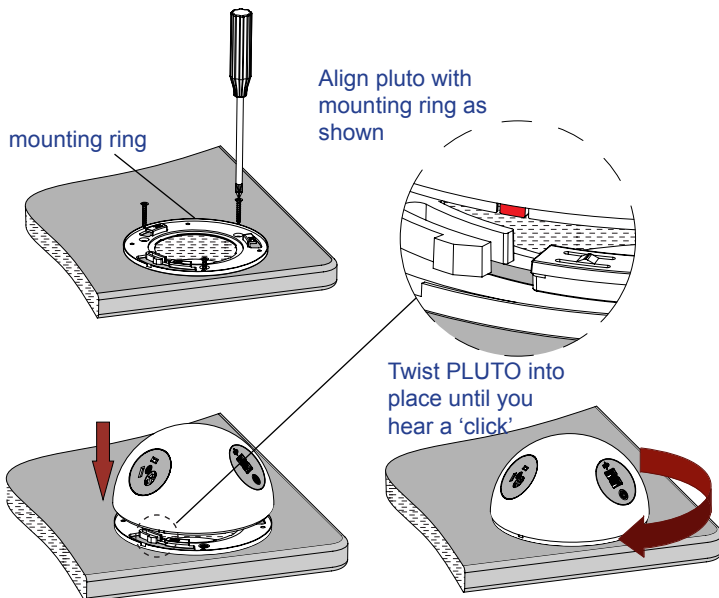
Soft Wiring (power)

Power wired to Wieland GST connector allows starter cables to be changed to suit requirements, especially useful during moves and changes (CHURN)

Fixing methods

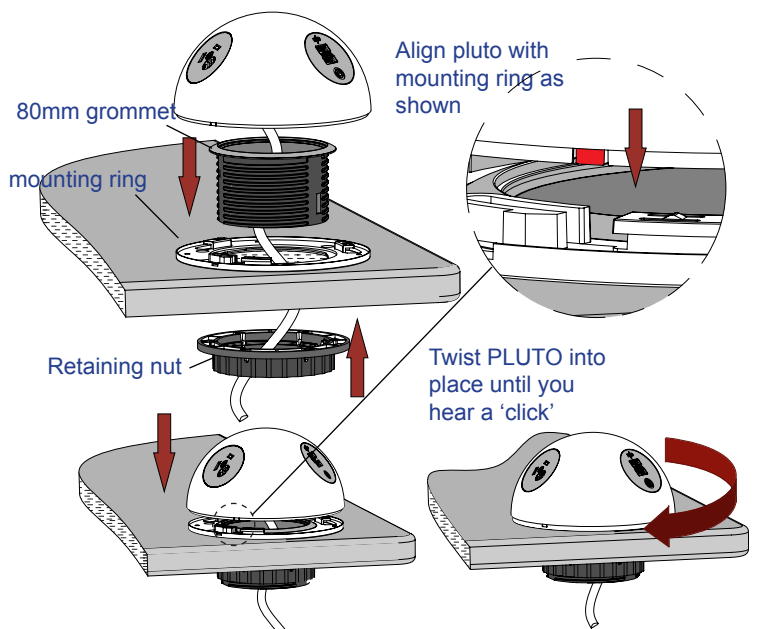
PLUTO mounting adaptor ring screw fixing

Place mounting ring over 50-80mm hole.
Screw mounting ring in place.



PLUTO mounting adaptor ring with grommet fixing

Place mounting ring over 80mm hole.
Place 80mm grommet into mounting ring and screw up retaining nut until firmly in place.



16.05.2014