

Assembling Keystone Data into QF5 Keystone Data Tile

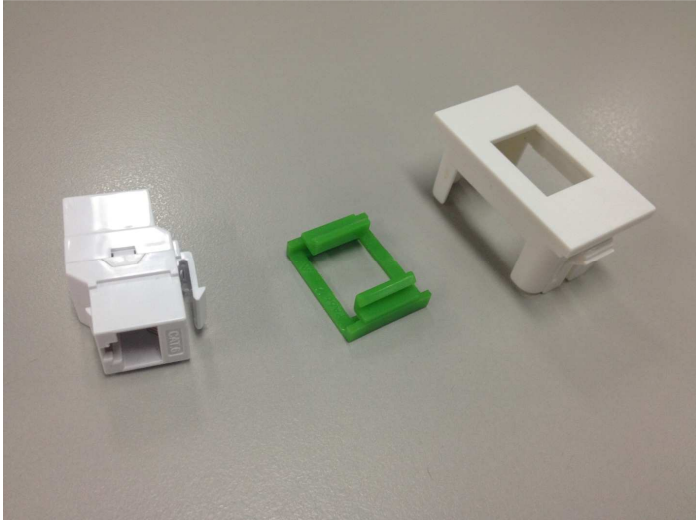


Image 1: Keystone Data Coupler, Keystone Adaptor, QF5 Keystone Data Tile

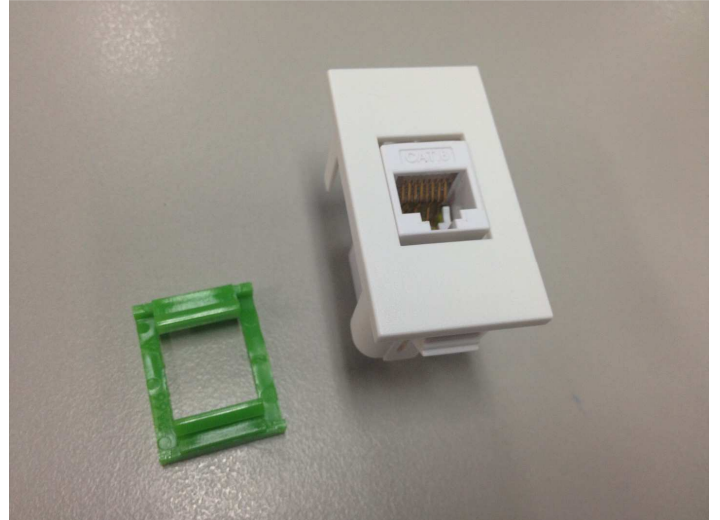


Image 2: Coupler cannot be securely engaged into the QF5 Keystone Data Tile without the Keystone Adaptor



Image 3: Assemble Keystone Adaptor into QF5 Keystone Data Tile



Image 4: Assembled Adaptor

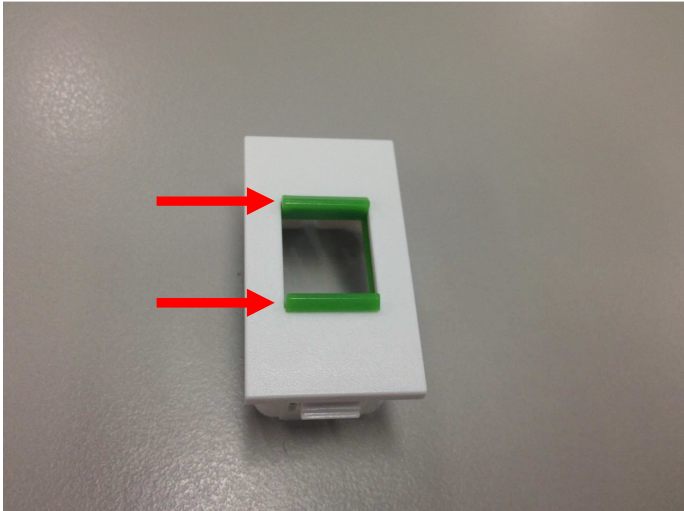


Image 5: Ensure Adaptor wings are fully engaged into the cut out in the QF5 Keystone Data tile

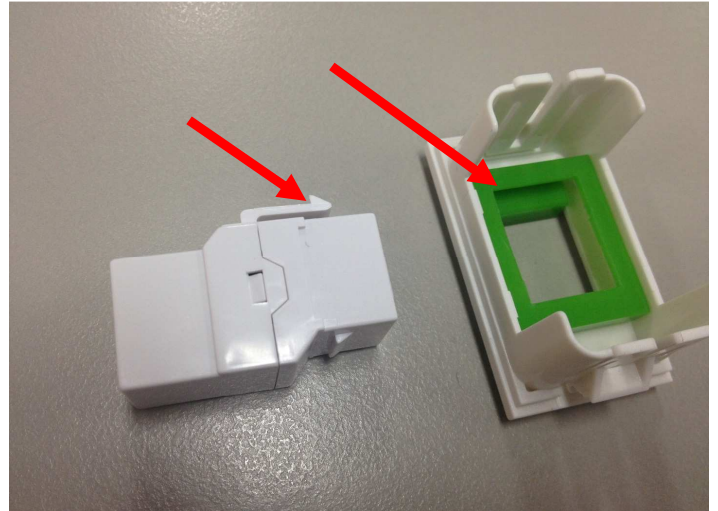


Image 6: Align Data Coupler with Keystone Adaptor.

Note: The orientation of the clip on the top of the Coupler must align with the Step in the Adaptor

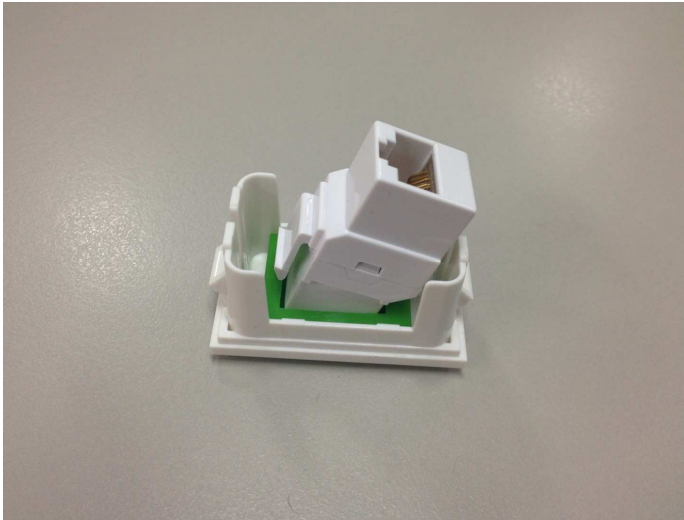


Image 7: Assembled Coupler into the adaptor

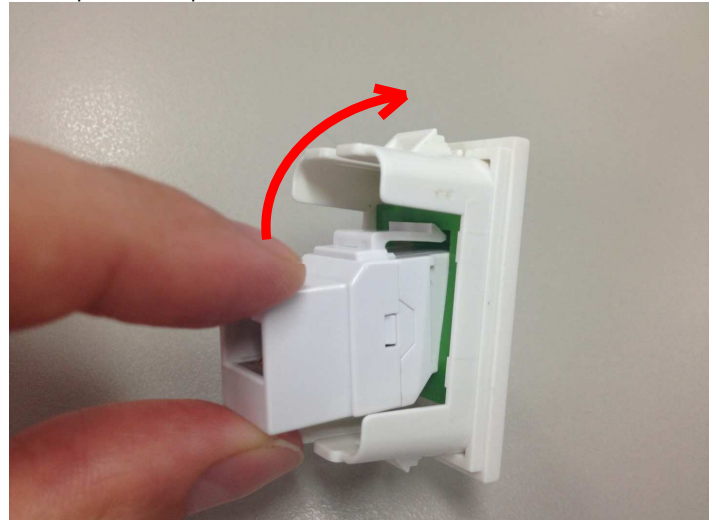


Image 8: Pivot the Coupler forward till the clip on the Coupler engages



Image 9: Coupler fully engaged