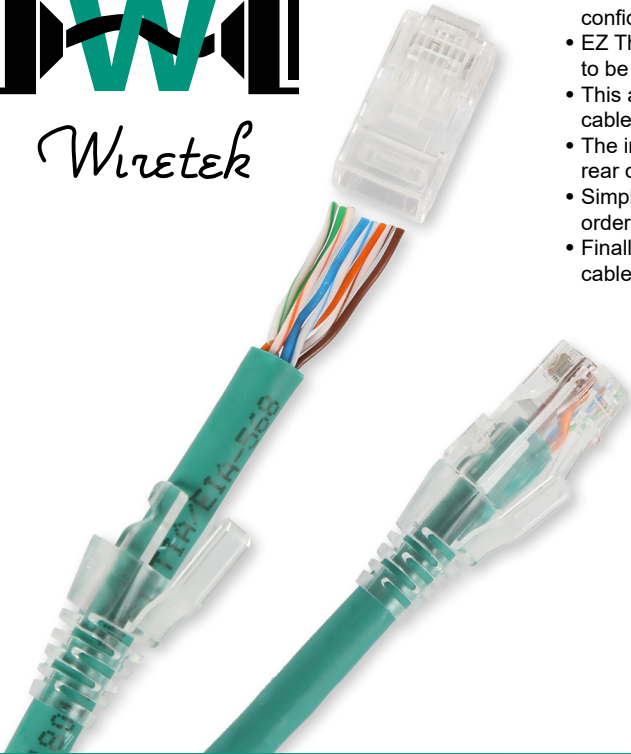


EZ THROUGH TYPE RJ45 CAT5E/CAT6 CRIMPING SYSTEM



- EZ Through Type RJ45 CAT5e & CAT6 connectors offer an easier, faster and confident termination action with an improved electrical connection.
- EZ Through Type connectors simplify twisted pair terminations by allowing the wires to be inserted straight through the connector and out the front.
- This allows easy identification of the wiring order and confirm correct and affirmative cable wire positioning prior to crimping for a secure and confident work flow.
- The improved connection is achieved through the cable jacket sitting tightly in the rear of the connector, meaning a better contact and the twist rate is maximised.
- Simply strip the cable using the HT346 specific EZ crimping tool, sort the wires into order and insert through the RJ45 CAT5e or CAT6 EZ connector.
- Finally crimp down for a perfect connection every time. Crimps the Jacket for secure cable hold. Optional cable strain boots are now available.



How Does the EZ Through Crimp System Work?



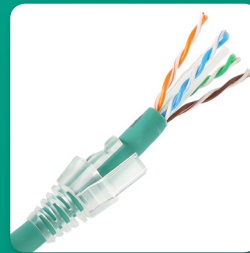
Start EZ Through plug and cable preparation by inserting the OPTIONAL cable boot.



Using the HT346 crimp tool for EZ Through Type plugs.



Strip off cable jacket using a wire stripper.



Cut and remove the spine and draw cord leaving the wires FLAT and in correct order.



Un-twist and place wires FLAT and in correct order.



Push the cable through as far as possible so the wires protrude and the cable jacket is well within the shell for clamping.



Insert the OPTIONAL cable strain relief boot prior to crimping.



Insert the now assembled plug into the HT346 firmly.



Close the tool crimping the plug and cable until the excess wires are cut and ejected.

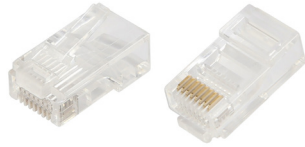


Inspect that all connectors are crimped and that the cable jacket is secured by the internal plug clamp.

Discover a New Way To Crimp Faster and Securely with EZ-Through type Crimp Plugs

CAT5e EZ THROUGH TYPE CRIMP PLUG

8P8C UTP RJ45 3 blade EZ-Through type CAT5e crimp plug. 30u gold plated. To suit stranded and solid core cables. Requires EZ-Through type compatible crimper for installation. Fast and secure.

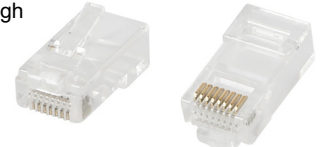


Type	Gold	QTY	Code
CAT5e	30µ	10	MOD939
CAT5e	30µ	100	MOD9390



CAT6 EZ THROUGH TYPE CRIMP PLUG

8P8C UTP RJ45 3 blade EZ-Through type CAT6 crimp plug. 30u gold plated. To suit stranded and solid core cables. Requires EZ-Through type compatible crimper for installation. New reliable system.

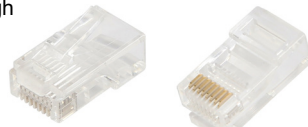


Type	Gold	QTY	Code
CAT6	30µ	10	MOD941
CAT6	30µ	100	MOD9410



CAT5e EZ THROUGH TYPE ECONOMY CRIMP PLUG

8P8C UTP RJ45 3 blade EZ-Through type CAT5e crimp plug. 3u gold plated. To suit stranded and solid core cables. Each jar has 100 plugs. Requires EZ-Through type compatible crimper for installation. Secure crimp.



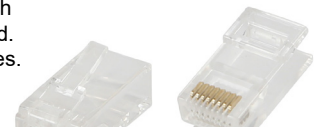
Type	Gold	QTY	Code
CAT5e	3µ	100	MOD9380



Photo shows plug before being crimped and wires trimmed

CAT6 EZ THROUGH TYPE ECONOMY CRIMP PLUG

8P8C UTP RJ45 3 blade EZ-Through type CAT6 crimp plug. 3u gold plated. To suit stranded and solid core cables. Each jar has 100 plugs. Requires EZ-Through compatible crimper like HT346 for installation. Saves time and energy for installers.



Type	Gold	QTY	Code
CAT6	3µ	100	MOD9400



Photo shows plug before being crimped and wires trimmed

CAT5e EZ THROUGH TYPE CRIMP PLUG & BOOT

8P8C UTP RJ45 3 blade EZ-Through type Cat5e crimp plug with clear plastic strain relief boot. Each package includes 50 sets. RJ45 plugs are 3u gold plated. To suit stranded and solid core cables. Requires EZ-Through type compatible crimpers for installation. Secures cable, boot & plug.



Type	Gold	QTY	Code
CAT5e	3µ	50 sets	MOD9381



Photo shows plug before being crimped and wires trimmed

CAT6 EZ THROUGH TYPE CRIMP PLUG & BOOT

8P8C UTP RJ45 3 blade EZ-Through type Cat6 crimp plug with clear plastic strain relief boot. Each package includes 50 sets. RJ45 plugs are 3u gold plated. To suit stranded and solid core cables. Requires EZ-Through type compatible crimpers for installation. Boot and plug become one.



Type	Gold	QTY	Code
CAT6	3µ	50 sets	MOD9401



Photo shows plug before being crimped and wires trimmed

CAT5e EZ THROUGH TYPE STRAIN RELIEF BOOTS

Clear plastic EZ-Through type strain relief boots to suit CAT5e EZ through type RJ45 plugs. The strain relief boot is crimped with the connector and locked permanently. 10 per bag.



Type	QTY	Code
CAT5e	10	RJB104CL



Photo shows boot is crimped with plug and cable, locked as one piece.

CAT6 EZ THROUGH TYPE STRAIN RELIEF BOOTS

Clear plastic EZ-Through type strain relief boots to suit CAT6 EZ through type RJ45 plugs. The strain relief boot is crimped with the connector and locked permanently. 10 per bag.



Type	QTY	Code
CAT6	10	RJB106CL



Photo shows boot is crimped with plug and cable, locked as one piece.

EZ THROUGH TYPE CRIMPING TOOL

SUITS NEW EZ MODULAR CRIMP PLUGS

This ratchet crimping tool is designed to cut, strip and terminate extended copper wires with precision from EZ-RJ45 and EZ-RJ11/12 connectors. Perfect to use with CAT5 and CAT6 STP and UTP cables. The ratchet mechanism allows you to make clean, consistent and repeatable terminations. You can also use this crimping tool to cut and strip wires, giving you essentially 3 tools in one.

- Crimping size:
- 8P8C/RJ45
- 6P6C/6P4C/6P2C RJ11/RJ12

Code
HT346

