



FCS-3056 Version: 1

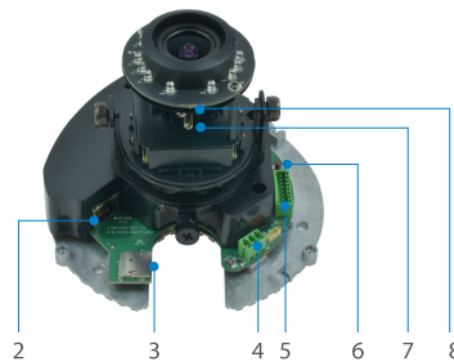
! Power supply unit is to be ordered separately.

Fixed Dome IP Network Camera, Varifocal Lens, 3-Megapixel, 802.3af PoE, IR LEDs, Vandalproof, two-way audio



1

1. Lens
2. Ethernet Port
3. Memory Card Slot



2

3

4

5

6

7

8

4. Power Input
5. Digital Input/Output and Audio-In / Audio-out

6. Reset Button
7. Focal Length Adjustment
8. Monitor Distance Adjustment

Key Features

- 2.8-12 mm adjustable Vari-focal length for wide angle surveillance
- Built-in Micro SDHC/SDXC card slot for local storage
- 3-Megapixel high-definition resolution
- Vandal-proof IK09-rated housing
- Built-in infrared LEDs for night viewing up to 30m
- Removable IR-cut filter for day and night surveillance
- Video compression: H.264/MJPEG
- Power support: PoE (IEEE 802.3af)
- Free surveillance and CMS (Central Management System) software packages with 64-channel license



Specifications

System Specifications

Standards & Protocols:

IEEE 802.3 10-BASE-T, Ethernet
IEEE 802.3u 100-BASE-TX, Fast Ethernet
IEEE 802.3af Power over Ethernet (PoE)
IEEE 802.1X Network Access Control
TCP, UDP, HTTP, HTTPS, DHCP, PPPoE, RTP, RTSP, IPv6, DNS, DDNS, NTP, ICMP, ARP, IGMP, SMTP, FTP, UPnP, SNMP, Bonjour

Image Sensor:

3-Megapixel 1/3.2" Progressive Scan CMOS

Lens:

Vari-focal, Manual focus, f2.8-12mm, F1.4

Port:

1 x RJ-45 10/100 Mbps PoE port
1 x terminal block Line in/out
I/O terminal block (1 DI/1 DO)
1 x MicroSDHC/ MicroSDXC card slot

Button/Knob:

Reset Button

Indicator:

Power

IR Cut Filter:

Removable infrared-cut filter for day & night function

IR LED:

15 IR LEDs for illumination up to 30m

Shutter Time:

1/5 ~ 1/10,000 sec

Angle of View:

70.5°-28.2°

Pan/Tilt/Zoom:

Digital Zoom to very high detail available on Software

Video Compression:

H.264 / MJPEG

Resolution:

3M(2048 x 1536)

Video Format:

RAW

Audio Compression:

G.711

Power Input:

802.3af PoE

Power Consumption:

PoE Class 2 (IEEE802.3af) / 6.49 W (IR on)

Data Transfer Rate:

10/100Mbps

Features

General:

Backup: MicroSDHC /MicroSDXC card slot for local storage

Video:

Image Setting: - Adjustable image size, quality and bit rate

- Configurable brightness, sharpness, contrast, saturation, white balance and exposure

- AGC/AWB/AES

- Back Light Compensation (BLC)

- 2D Noise Reduction (2DNR)

Streaming: Up to 2 video streams

Audio:

Streaming: 2-way audio

Input/Output: line input, line output

Performance

Storage Capacity:

SD/MicroSD memory card of up to 64GB

Frame Rate (fps):

15 fps at 2048 x 1536; 30 fps at 1920 x 1080; 30 fps at 1280 x 720; 30 fps at 640 x 480; 15 fps at 320 x 240

Minimum illumination:

Color: 0.1 lux at F1.4

B/W: 0 lux (IR LED on)

Environment

Temperature (°C):

Operating: -10°C ~ 50°C

Humidity (Non-condensing):

Operating: 10% ~ 85%

Installation:

Wall/Ceiling Mount

Physical Specifications

Dimensions (W x D x H mm):

146 x 114 x 146

Weight (g):

538 g

Approval and Compliance

EMI/EMS:

CE, RoHS, FCC, ONVIF, IK09

Environmental Test:

Vandal Resistant IK09-rated

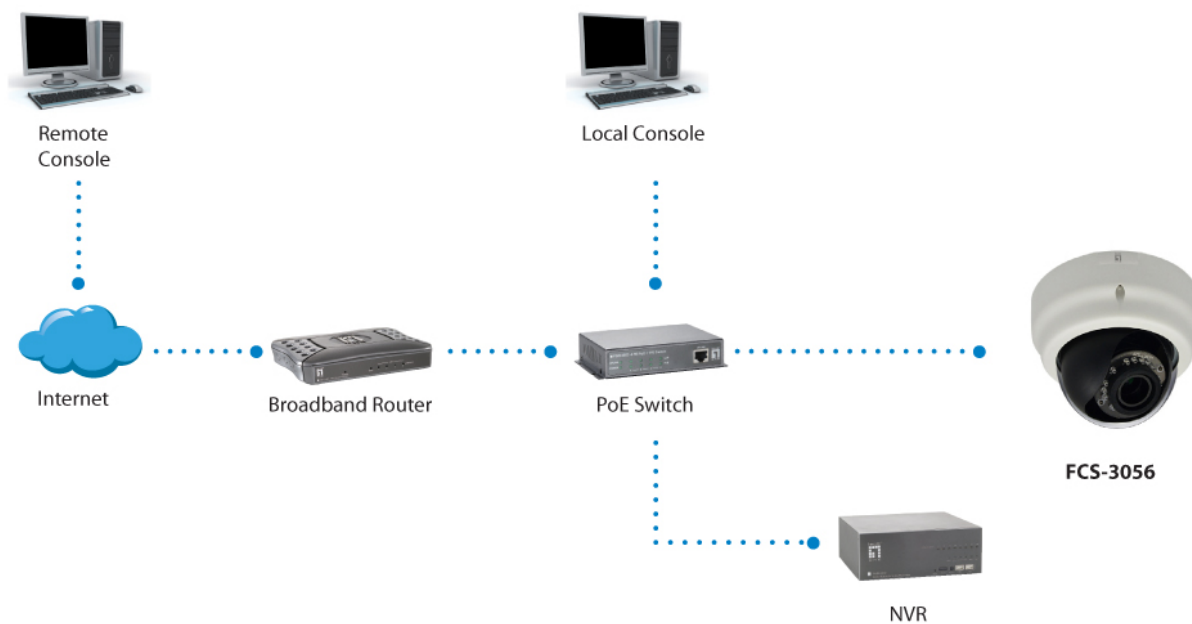
Others

Viewing Systems:

Microsoft Windows 8/7/Vista/XP



Diagram



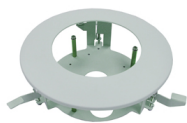
Order Information

FCS-3056

Package Contents

FCS-3056
Screw Kit
Quick Installation Guide
Resource CD (User Manual, Utility, QIG)

Optional Accessory



CAS-3003
Flush Mount Bracket

No liability or responsibility for any errors or omissions in the content.
Specifications are subject to change without notice.
All mentioned brand names are registered trademarks and property of their owners.
Copyright © Digital Data Communications GmbH, Germany. All Rights Reserved.