



FCS-4051 Version: 1

! Mounting kits are to be ordered separately.

PTZ IP Network Camera, 2-Megapixel, 20X Optical Zoom, Indoor/Outdoor, IR LEDs, two-way audio, 802.3at PoE

The LevelOne FCS-4051 is a PTZ IP surveillance camera designed for use outdoors, boasting 2-Megapixel resolution and a 20X optical zoom. The camera features motorized Pan and Tilt features as well, enabling it to focus in a variety of directions and zoom in on a specific viewing area. The camera is also PoE, enabling it to run both power and data on the one Cat.5 cable, making deployments easy and efficient. An IP66-rated weatherproof casing allows for safe, reliable operation in outdoor conditions such as rain, heat, dust, snow and humidity.

Key Features

- 2-Megapixel (1920 x 1080) high-definition resolution
- Video compression: H.264/MJPEG
- Built-in infrared LEDs for night viewing up to 100m
- Built-in Micro SD/SDHC card slot for local storage
- Supports 20X optical zoom
- Dual power support: 12V DC/PoE (IEEE 802.3at)
- Weatherproof IP66-rated housing
- 360° pan and 105° tilt movements allow for a wide range of monitoring angles

Specifications

System Specifications

Standards & Protocols:

TCP/IP, UDP, ICMP, HTTP, HTTPS, FTP, DHCP, DNS, DDNS, RTP, RTSP, RTCP, PPPoE, NTP, UPnP, SMTP, SNMP, IGMP, 802.1X, QoS, IPv6, IPv4

Image Sensor:

1/2.8" Progressive Scan CMOS

Lens:

4.7-94mm ,20X Zoom, F1.6~F3.5,
16X Digital Zoom

Port:

1 x RJ-45 10/100 Mbps PoE port
1 x Power Connector
1 x MicroSDHC/ MicroSDXC card slot
1 x Line in/Out terminal block

**Button/Knob:**

Reset Button

Indicator:

Power

IR Cut Filter:

Removable infrared-cut filter for day & night function

IR LED:

100 Meter/Smart IR mode

Shutter Time:

1-1/10,000s

Angle of View:

58.3°-3.2°

Pan/Tilt/Zoom:

Pan:360° endless; Tilt: -15°~90°(Auto Flip)

Pan Manual Speed: 0.1°~80°/s, Pan Preset Speed: 80°/s

Tilt Manual Speed: 0.1°~80°/s, Tilt Preset Speed: 80°/s

Number of preset point : 300

Video Compression:

H.264/ MJPEG

Resolution:

50Hz:25fps (1920×1080,1280×960,1280×720), 50fps (1280×960,1280×720) ;

60Hz: 30fps(1920×1080,1280×960,1280×720), 60fps (1280×960,1280×720)

Video Format:

AVI

Audio Compression:

G.711/G.722/G.726/MP2L2

Power Input:

12 VDC or PoE(802.3at, class4), Max.20W

Power Consumption:

Max.20W

Data Transfer Rate:

32 Kbps to 16 Mbps

Features

General:

Digital Wide Dynamic Range (DWDR),rotate mode. Brightness, contrast, saturation, and sharpness are adjustable via web browser.Dual Stream,SDK

PoE:

802.3at, class4

Security:

One-key Reset, Anti-Flicker, Heartbeat, Mirror, Password Protection, Privacy Mask, Watermark,IP Address Filter ,Motion Detection

Video:

Auto scan / Frame scan / Random scan / Patrol / Pattern / Preset / Panorama scan / Tilt scan /Dome reboot / Dome adjust

8 patrols, up to 32 presets per patrol Number of Preset/ROI Support 4 areas with adjustable levels

/Intrusion detection, Line crossing detection

Performance

Number of Clients:

Up to 32 users,3 Levels: Administrator, Operator and User

Storage Capacity:

Support up to 128GB Micro SD/SDHC/SDXC card

Frame Rate (fps):

50Hz:25fps (1920×1080,1280×960,1280×720), 50fps (1280×960,1280×720) ;

60Hz: 30fps(1920×1080,1280×960,1280×720), 60fps (1280×960,1280×720)

Minimum illumination:

F1.6, AGC On: Color: 0.05 lux, B/W : 0.01 lux, 0 lux with IR

Environment

Temperature (°C):

-30°C ~ 65°C (-22°F ~ 149°F)

Humidity (Non-condensing):

90% or less

Physical Specifications

Dimensions (W x D x H mm):

164.5 × 295

Weight (g):

2kg (4.41lbs)

Color:

White/Black

Approval and Compliance

EMI/EMS:

CE/FCC

Safety:

UL

Environmental Test:

IP66

Others:

RoHS

Others

Viewing Systems:

WIN 7/8/10 Internet Explorer 9 or above

Compatibility:

Onvif,ISO-9001 certified factory

Order Information

FCS-4051

Package Contents

FCS-4051

Resource CD (User Manual, Utility, 64-CH Monitoring Software)

Power adapter with power cord



Optional Accessory



CAS-7331
Wall Mount Bracket



CAS-7332
Pole Mount Bracket



CAS-7333
Corner Mount Bracket



CAS-7334
Wall mount bracket with Junction Box



CAS-7335
Pole Mount Bracket with Junction Box



CAS-7336
Corner Mount Bracket with Junction Box



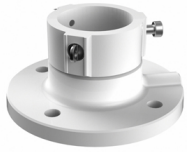
CAS-7337
Gooseneck surface mount bracket



CAS-7338
Pendant Mount Bracket



CAS-7339
Pendant Mount Bracket



CAS-7340
Ceiling Mount Bracket



CAS-7341
Parapet Mount Bracket