

FGU-5021 Version: 1



50-Port Fast Ethernet Switch, 2 x Gigabit SFP/RJ45 Combo

Fast connections and fiber distancesFGU-5021 is a 48-port Fast Ethernet Switch (10/100 Mbps) that gives you a h

Key Features

- 48 Fast Ethernet ports and 2 Gigabit RJ45/SFP combo ports
- 9K jumbo frames to increase data transfer rates
- Supports 8K MAC address auto-learning and auto-aging
- 19-inch metal housing
- Quick and easy installation

Specifications

System Specifications

Standards & Protocols:

IEEE802.3(10BASE-T)

IEEE802.3u(100BASE-T)

IEEE802.3az Energy Efficient Ethernet

Memory:

16Mbit

Buffer Memory:

4Mbit

Port:

48 x 10/100BASE-TX RJ45 ports

2 x 100/1000/1000Base-X SFP Slots

2 x 100/1000/1000Base-T RJ45 ports

Indicator:

Power, LINK/ACT,1000M

Transmission Method:

Store- forward

Power Input:

100-240V/AC?50-60Hz



Power Consumption:

28.6W

Backplane (Gbps):

13.6Gbps

MAC Address Table:

8K

Performance

Packet Forwarding Rate:

148800pps

Jumbo Frame (K):

9KB

Environment

Power Saving:

Yes

Temperature (°C):

Operating: 0°C ~ 40°C

Storage: -40°C ~ 70°C

Humidity (Non-condensing):

Operate:10-90% non-condensing

Storage:5-90% non-condensing

Physical Specifications

Dimensions (W x D x H mm):

440*230*44

Weight (g):

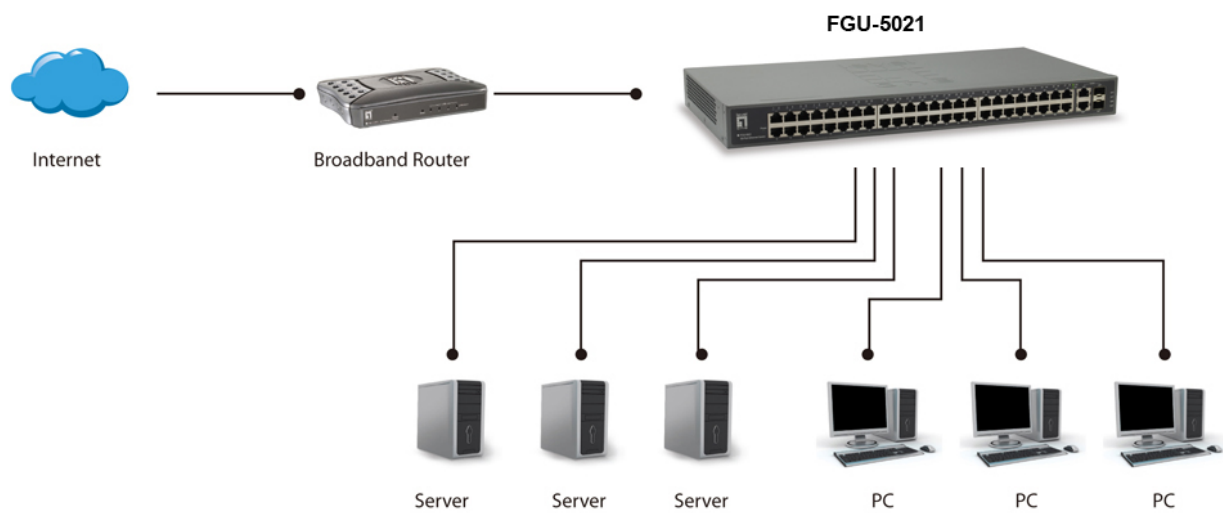
3.03

Approval and Compliance

EMI/EMS:

CE/FCC

Diagram



Order Information

FGU-5021

Package Contents

FGU-5021
Power Cord
19" Rack Mount Kit
Quick Installation Guide

No liability or responsibility for any errors or omissions in the content.
Specifications are subject to change without notice.
All mentioned brand names are registered trademarks and property of their owners.
Copyright © Digital Data Communications GmbH, Germany. All Rights Reserved.