



FSW-1650 Version: 5



16-Port Fast Ethernet Switch

Product OverviewThe FSW-1650 switch provides an ideal solution for small businesses that demand a reliable network switch that provides a high bandwidth interface between file servers and workgroups, departments and offices.
Advanced Networking FeaturesThe LevelOne FSW-1650 is a wire-speed, nonblocking 16 port Fast Ethernet Unmanaged Switch with an internal power supply. It provides a network with an 8K MAC address table, 3.2Gbps backplane throughput, asymmetrical flow-control support for full-duplex network connectivity, auto-negotiation and Auto-MDIX. The 16-port Fast Ethernet Switch utilizes packetstore- and forwarding switching for error-free data transmissions and IEEE802.3x backpressure flow control to control data flow between the sending and receiving nodes as well as to prevent any data packet loss.

Compact DesignThe FSW-1650 is a compact designed network switch. Users can place the switch on any desktop area or mount it in a 19-inch server rack or cabinet by using the included rack-mounting accessory kit.
Quick Configuration and Easy MaintenanceThe LevelOne FSW-1650 does not require any software configuration. It is Plug-and-Play enabled for quick set-up and immediate use within the Local Area Network. The 16 port Faster Ethernet Switch is equipped with a full range of LEDs for instant error detection, networking monitoring and networktroubleshooting.

Key Features

- Provides flexibility of 16 x 10/100BASE-TX ports
- 10/100Mbps, full/half-duplex, auto-negotiation, auto-MDI/MDIX
- Supports 8K MAC address auto-learning and auto-aging
- IEEE 802.3x Flow Control protects against lost packets for reliable data transmission
- Minimize carbon footprint with advanced energy efficient technology (IEEE 802.3az)

Specifications

System Specifications

Standards & Protocols:

IEEE802.3(10BASE-T),
IEEE802.3u(100BASE-T),
IEEE802.3az Energy Efficient Ethernet

Buffer Memory:

2MB

Port:

Full Shielded

Indicator:

Power, LINK/ACT,100M

Transmission Method:

Store- forward

Power Input:

100-240V/AC

Power Consumption:

6.6W

Backplane (Gbps):

3.2Gbps

MAC Address Table:

8K

Features

General:

16port10/100Mbps

Performance

Packet Forwarding Rate:

14880pps

Jumbo Frame (K):

2KB

Environment

Operating Temperature (°C):

0-40°C

Operating Humidity (Non-condensing):

10%~90%

Physical Specifications

Dimensions (W x D x H mm):

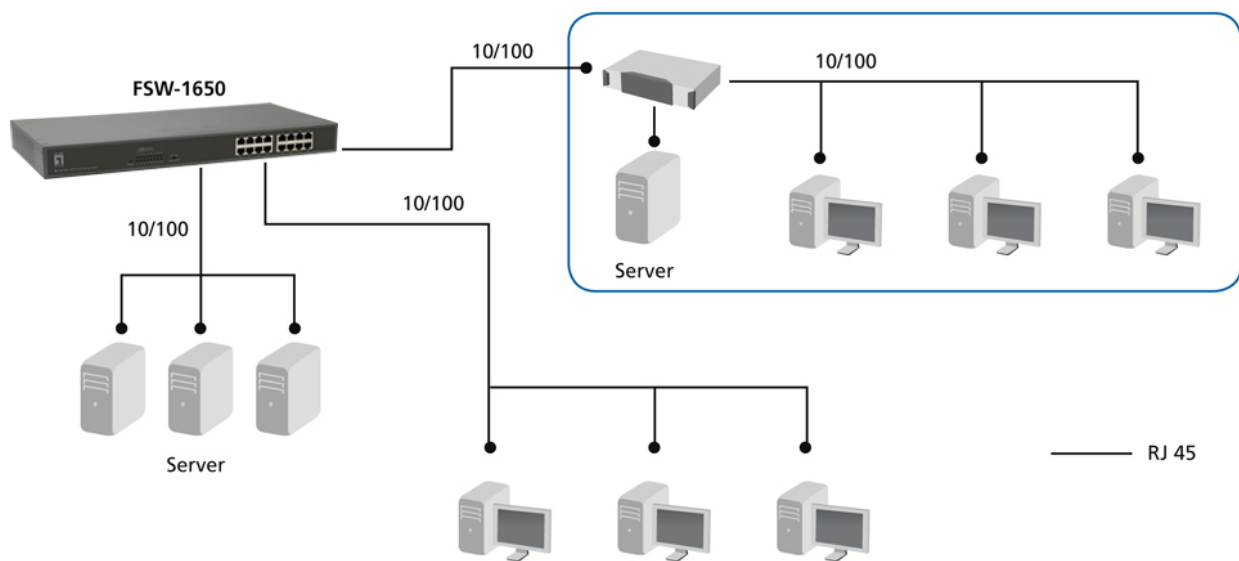
440 x 208 x 44

Approval and Compliance

EMI/EMS:

CE/FCC

Diagram



Order Information

FSW-1650

Package Contents

FSW-1650
Power Cord
19" Rack Mount Kit

No liability or responsibility for any errors or omissions in the content.
Specifications are subject to change without notice.
All mentioned brand names are registered trademarks and property of their owners.
Copyright © Digital Data Communications GmbH, Germany. All Rights Reserved.