



GEL-5261 Version: 1

52-Port L2 Managed Gigabit Switch, 4 x SFP

The LevelOne GEL-5261 is an intelligent L2 Managed Gigabit Switch with 48 RJ45 ports and 4 SFP fiber slots, designed for enterprise or large workgroups connectivity applications with the non-blocking, wire-speed switching performance and advanced networking management functions.

The switch supports a flexible web-based management interface for both IPv4 and IPv6 as well as console, SNMP and Telnet management access. Despite its affordable pricing, the GEL-5261 is equipped with many advanced features such as Internet Group Management Protocol (IGMP) snooping, port-/MAC-/tag-based VLAN, IEEE 802.1D/w/s Spanning Tree, Access Control List (ACL), IEEE 802.3az Energy Efficient Ethernet, Link Aggregation Control Protocol (LACP), IEEE 802.1p QoS, Storm Control for protecting against broadcast/multicast/unknown unicast and much more.

An ideal network solution for anyone looking for an affordable and efficient way to expand their network.

Key Features

- 48 Gigabit Ethernet ports and 4 Gigabit SFP slots
- IEEE 802.1d/w/s Spanning Tree Protocol (STP) and port mirroring
- IEEE 802.3ad LACP for auto port aggregation
- Supports Access Control List (ACL) authentication of up to 512 entries and port-based security with IEEE802.1X
- IP Multicast Filtering through IGMP Snooping V1 / V2 / V3
- Supports port-based VLAN, IEEE 802.1Q VLAN Tagging
- Supports IPv4/IPv6 network operation
- IEEE 802.1p QoS with 8 priority queues

Specifications

System Specifications

Standards & Protocols:

IEEE 802.3 10-BASE-T, Ethernet
 IEEE 802.3u 100-BASE-TX, Fast Ethernet
 IEEE 802.3ab 1000BASE-T, Gigabit Ethernet
 IEEE 802.3z 1000BASE-X, Gigabit Ethernet
 IEEE 802.1p Quality of Service (QoS)
 IEEE 802.1Q Virtual LANs (VLANs)
 IEEE 802.1D MAC Bridges
 IEEE 802.1d Standard Spanning Tree Protocol
 IEEE 802.1s Multiple Spanning Tree (MSTP)
 IEEE 802.1w Rapid Spanning Tree Protocol (RSTP)
 IEEE 802.3x Flow Control
 IEEE 802.3ad Link Aggregation Control Protocol (LACP)
 IEEE 802.3af Power over Ethernet (PoE)
 IEEE 802.3at Power over Ethernet Plus (PoE+)



IEEE 802.3az Energy-Efficient Ethernet
Link Layer Discovery Protocol (LLDP)
Universal Plug and Play (UPnP)

Memory:

32MB

Buffer Memory:

12Mbits

Port:

48x RJ-45 10/100/1000BASE-T ports
4 x 100/1000Base-X SFP Slots

Button/Knob:

Reset / Factory Default Button

Indicator:

Power; Link/Active

Transmission Method:

Store-and-Forward

Power Input:

Power Input: 100-240V AC, 50-60 Hz, Internal Power Supply

Power Consumption:

20W

Backplane (Gbps):

104Gbps

MAC Address Table:

16K

Data Transfer Rate:

10/100/1000Mbps

Features

General:

Quality of Service (QoS):

8 hardware Priority Queues per port

Traffic classification based on IEEE 802.1p CoS

IPv4/IPv6 precedence/ type of service (ToS) / DSCP based

Rate Limiting - Ingress policer egress shaping and rate control

Spanning Tree:

Bridge Protocol Data Units (BPDU)

IEEE 802.1D MAC Bridges

IEEE 802.1d Spanning Tree Protocol (STP)

IEEE 802.1w Rapid Spanning Tree Protocol (RSTP)

IEEE 802.1s Multiple Spanning Tree Protocol (MSTP)

Virtual Local Area Network (VLAN):

802.1Q tag-based VLAN - up to 4K VLANs and 4K VLAN IDs

Port-based VLAN

MAC-based VLAN

DHCP: DHCP Client; DHCP Relay (Layer 2)

IPv6:

IPv6 Ping / Trace /Telnet / Syslog / TFTP

IGMP:

IGMP v1/v2/v3 snooping; IGMP groups: 511, IGMP Queried; IGMP Filtering /Throtting

Port Mirroring:

One to One /One to Many

IEEE 802.3ad LACP Trunk

Security:

DDOS Protection
CPU Guard
Port Isolation
Port Mirror /Remote Mirror
Broadcast / Multicast / Unknown Storm Control
802.1X
ACL
Port Security
MAC Filter / MAC Authentication
AAA
IP Source Guard
SSH
G.8032
IP clustering

Management:

NTP/SNTP
Dual Image /Configuration
Firmware upgrade /download (HTTP/TFTP/FTP)
RMON/ SNMP
Management Access (Console / SNMP/ Web / Telnet / SSH)
Memory Flash Log
Event /Error Log
DHCP v4/v6 Snooping
DHCP Snooping Option82

L3:

Static Routing

Ease of Use:

Dashboard

Performance**Packet Forwarding Rate:**

77.4 Mpps

Jumbo Frame (K):

10K

Environment**Power Saving:**

IEEE 802.3az Energy Efficient Ethernet:

- Automatically turns power off on RJ-45 port when detecting link down or Idle of client
- Cable length detection: Adjusts the signal strength based on the cable length
- Reduces the power consumption for cables shorter

Acoustic Noise:

54.2 dB (A)

Heat Dissipation:

136.48 (Btu/H)

Temperature (°C):

0-50°C

Humidity (Non-condensing):

10-90%



Installation:
desktop & 19-inch rack-mountable

Physical Specifications

Dimensions (W x D x H mm):
440*220*44mm

Weight (g):
2500g without box

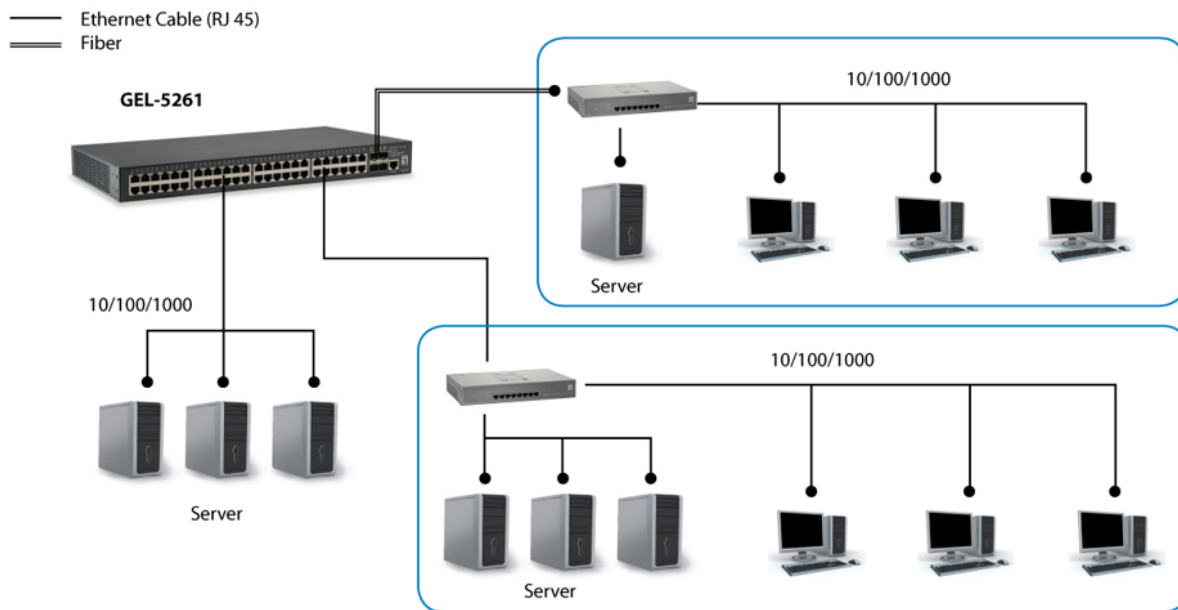
Reliability

MTBF:
25 degreeC: 534,057 hrs
45 degreeC: 154,383 hrs

Approval and Compliance

EMI/EMS:
CE classA, FCC, UL, VCCI, BSMI

Diagram



Order Information

GEL-5261

Package Contents

GEL-5261
Power Cord
19" Rack Mount Kit
Quick Installation Guide
Resource CD (User Manual, QIG)
Console Cable

No liability or responsibility for any errors or omissions in the content.
Specifications are subject to change without notice.
All mentioned brand names are registered trademarks and property of their owners.
Copyright © Digital Data Communications GmbH, Germany. All Rights Reserved.