



GSW-2457 Version: 4



24-Port Gigabit Switch

Gigabit Speeds: Take Your Data to the Next Level GSW-2457 is a 24-port Gigabit Ethernet Switch that gives you a high-performance, low-cost, easy-to-use, seamless upgrade to boost your network to 1000Mbps. Increase the speed of your network backbone to a massive 48Gbps and bring lightning fast Gigabit connections to all your computers.

Bandwidth hungry? Not a problem. What happens when you have several users accessing multimedia applications all at the same time? No need to worry as GSW-2457 allows you to move large files faster and easier. Transfer your CGI, CAD, video, or other large multimedia files over the network instantly and without lag.

Plug and Play, Flexible and Easy GSW-2457 is plug-and-play so no configuration is required. Providing auto MDI/MDI-X cable detection on all ports eliminates the need for crossover cables or Uplink ports. Each port can be used as general ports or Uplink ports, and any port can be simply plugged into a server, a hub, a router or a switch, using a straight cable or crossover cable.

Key Features

- 24 Gigabit Ethernet ports
- 10/100/1000Mbps wire speed transmission and reception
- 9K jumbo frames to increase data transfer rates
- Supports 8K MAC address auto-learning and auto-aging
- QoS control for traffic prioritization and bandwidth management
- Minimize carbon footprint with advanced energy efficient technology (IEEE 802.3az)
- 19-inch metal housing
- Fanless Design

Specifications

System Specifications

Standards & Protocols:

IEEE802.3(10BASE-T)


IEEE802.3u(100BASE-T)

IEEE802.3ab(1000BASE-T)

IEEE802.3az Energy Efficient Ethernet

Memory:

4Mbit



Buffer Memory:
4.1Mbit

Port:
Full Shielded

Indicator:
Power, LINK/ACT,1000M

Transmission Method:
Store- forward

Power Input:
100-240V/AV 50Hz

Power Consumption:
15W

Backplane (Gbps):
48Gbps

MAC Address Table:
8K

Features

General:
24 x 10/100/1000Mbps

Performance

Packet Forwarding Rate:
1488000pps

Jumbo Frame (K):
9KB

Environment

Power Saving:
IEEE802.3az Energy Efficient Ethernet

Operating Temperature (°C):
0-40°C

Operating Humidity (Non-condensing):
10%~90%

Physical Specifications

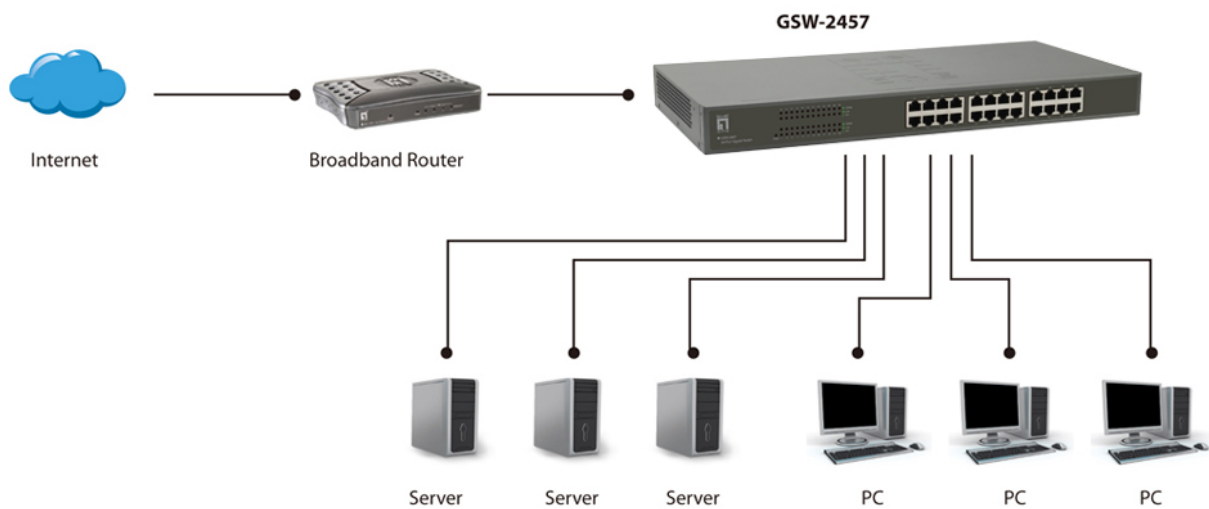
Dimensions (W x D x H mm):
440x220x44mm

Weight (g):
2kg

Approval and Compliance

EMI/EMS:
CE,FCC

Diagram



Order Information

GSW-2457

Package Contents

GSW-2457
Power Cord
19" Rack Mount Kit
Quick Installation Guide

No liability or responsibility for any errors or omissions in the content.
Specifications are subject to change without notice.
All mentioned brand names are registered trademarks and property of their owners.
Copyright © Digital Data Communications GmbH, Germany. All Rights Reserved.