



## Ethernet over VDSL2 Converter (Sender)



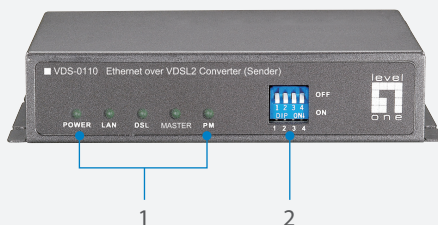
VDS-0110

H/W Version: 1

The VDS-0110 and VDS-0111, a line power pair of VDSL2 (Very high-bit-rate Digital Subscriber Line) converters, providing a broadband transmission up to 100/60Mbps downstream/upstream data rate over single pair copper line for point-to-point Ethernet connectivity. With 100/60Mbps data rate, VDS-0110/-0111 supports transmission distance up to 350m for line power connections.

The VDS-0110/-0111 conforms to the ITU-T G.993.1 and G.993.2 to meet VDSL/VDSL2 and SG15Q4 DMT for network requirements. A pair of VDS-0110/-0111 offers a cost effective line power solution for bandwidth-hungry applications such as LAN-to-LAN connectivity, Video Streaming, FTTB, and MDU/MTU over single twisted pair telephone line.

The line power is supplied from the VDS-0110 to VDS-0111 and conforms to the Safety-Extra-Low-Voltage (SELV) standards. With plug-and-play features and minimum installation time, VDS-0110 is always configured as master mode for central side, and VDS-0111 as slave mode for remote side.



1. LEDs
2. Dip Switch
3. Power Port
4. VDSL2 Interface
5. 10/100Mbps Port

### Key Features

- Compliant with ITU-T G.993.1, G.993.2 VDSL/VDSL2 and SG15Q4 DMT
- 100/60Mbps Downstream/Upstream for distance up to 350m
- Supports Line Powered VDSL2 connection
- Conforms Safety-Extra-Low-Voltage (SELV) standard
- RJ11 for DSL interfaces + RJ45 for Ethernet LAN port
- 5 LED Indicators for VDS-0110(Master)
- 4 LED indicators for VDS-0111(Slave)
- 4 Dip Switches for Configuration Settings
- Trellis Coding supports up to 1024 Discrete Multi-Tone (DMT) bins
- Auto MDIX for 10/100 BaseT Ethernet LAN Ports
- Low-Latency for Video/Voice/Data applications
- Line Surge Protection
- Selectable Fast and Interleaved modes
- Selectable fixed data rate and fixed SNR margin

### Works Well With



**VOI-7100**  
PoE IP Phone



**FCS-1081**  
PoE IP Camera



## Technical Specification

### VDSL Transmission

ITU-T G.993.1/2, SG15Q4 DMT Compliance  
 Trellis Code with 1024 DMT bins  
 Data Rate: 40/40 or 20/20Mbps  
 RJ-11 Connector x 1

### LAN Interface

Auto-Detection for 10/100 Base and Half/Full duplex  
 Fully compatible with IEEE802.3/IEEE802.3u  
 Automatic MDIX Function  
 RJ-45 Connector x 1

### LEDs

Power,LAN,DSL, MASTER, PM

### Power Supply

12VDC 2.5A

### Dimension

120x90x 28(mm)

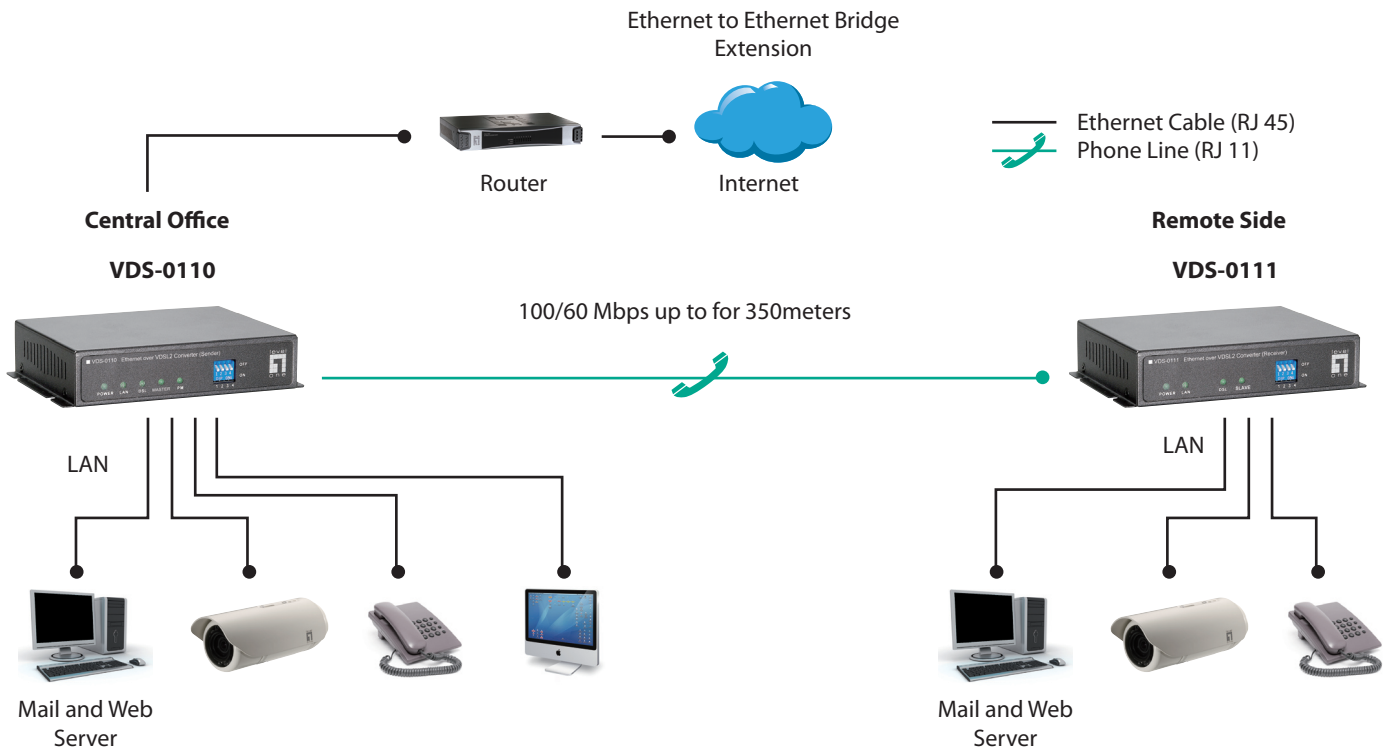
### Operating Environment

Humidity: 5% to 95% non-condensing  
 Temperature: 0 ~ 50 degree C

### EMI Certifications

FCC Rules Part 15 Class B  
 CE

## Product Diagram



**Order Information**

**VDS-0110:** Ethernet over VDSL2 Converter (Sender)

**Package Contents**

VDSL2 Converter

Power Adapter

User Manual

Telephone line