



WAN-4201 Version: 1

20dBi 5GHz Directional Panel Antenna

The LevelOne WAN-4201 is a directional antenna for increased performance and reduced interference, operating on the 5 GHz frequency. WAN-4201 can be mounted either indoors or outdoors. The antenna's gain value is 20dBi, and if mounted outdoors the weatherproof housing can withstand temperatures from minus 30°C up to 60°C, as well as rain, snow, dust and other harsh conditions.

Key Features

- Provides 20dBi directional operation
- Directional operation provides extended point to point coverage
- For IEEE 802.11a/n Wireless applications in 5 GHz frequency range
- Low wind loading
- -30°C to 60°C operating temperature range

Specifications

System Specifications

Connector:

N Female

Impedance (Ohms):

50 Ohms

HPBW / Horizontal:

15.9°

HPBW / Vertical:

14.9°

VSWR:

≤ 2.0

Polarization:

Vertical

Wireless

Frequency Band:

5.1~5.835GHz

Performance



Return Loss:

>=-10

Environment

Temperature (°C):

-30°C ~ +60°C

Humidity (Non-condensing):

95%@55°C

Physical Specifications

Dimensions (W x D x H mm):

330*295*35 mm

Weight (g):

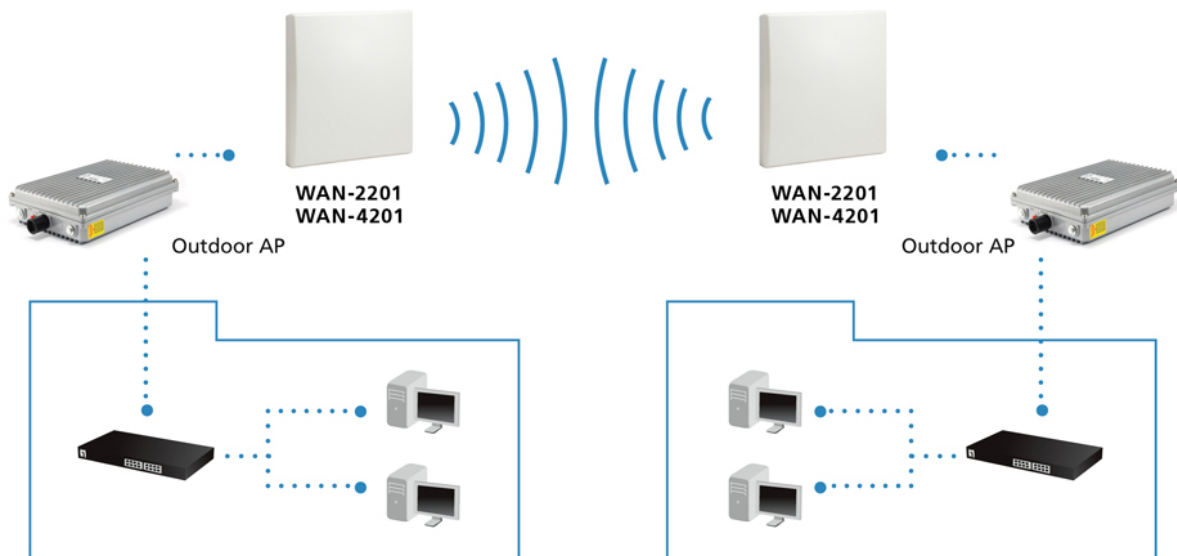
1044 g

Reliability

Survival Wind Speed:

50 m/s

Diagram



Order Information

WAN-4201

Package Contents

WAN-4201

Pole Mount Kit

Quick Installation Guide

Optional Accessory



ANC-4110

1m Antenna Cable, CFD-400, N Male Plug to N Male Plug, Indoor/Outdoor



ANC-4130

3m Antenna Cable, N Male Plug to N Female Jack



ANC-4150

5m Antenna Cable, CFD-400, N Male Plug to N Male Plug, Indoor/Outdoor



ANC-4160

6m Antenna Cable, N Male Plug to N Female Jack