



WAN-9151 Version: 1

15dBi 5GHz Directional Dual-Polarization Panel Antenna

The LevelOne WAN-9151 is a directional, dual-polarization antenna that can be mounted either indoors or outside. Dual-polarization offers the flexibility of two different communication channels receiving simultaneously, while a high gain of 15dBi offers better range and signal strength. If mounted outdoors the IP65-rated weatherproof housing can withstand temperatures from minus 30°C up to 60°C, as well as rain, snow, dust and other harsh conditions.

Key Features

- Provides 15dBi directional operation
- Directional operation provides extended point to point coverage
- For IEEE 802.11a/n Wireless applications in 5 GHz frequency range
- Dual-Polarization to avoid interference
- Low wind loading

Specifications

System Specifications

Connector:

2 x N Female

Impedance (Ohms):

50 Ohms

HPBW / Horizontal:

22°

HPBW / Vertical:

15°

VSWR:

≤2.0

Polarization:

Linear Vertical and Horizontal (±90°)

Wireless

Frequency Band:

5.1~5.9 GHz

Performance

Return Loss:

≤ -10

Environment

Temperature (°C):

-30°C ~ +60°C

Humidity (Non-condensing):

95%@55°C

Physical Specifications

Dimensions (W x D x H mm):

162.5*137.5*16 mm

Weight (g):

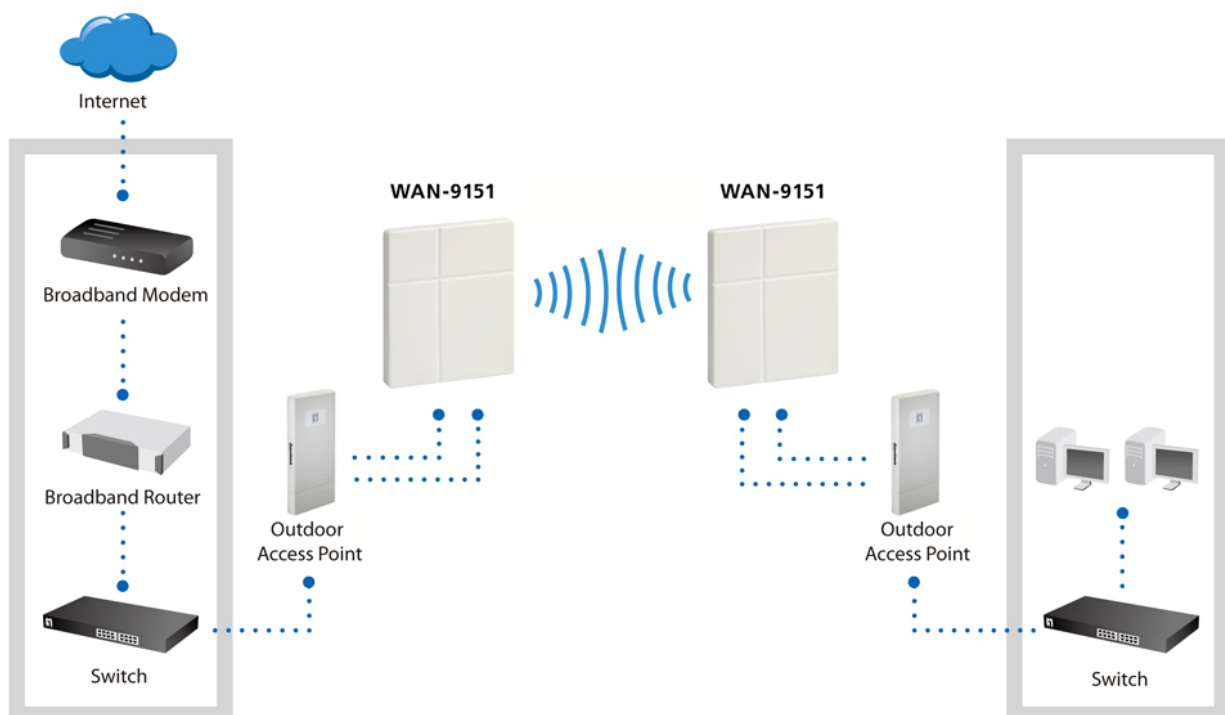
208 g

Reliability

Survival Wind Speed:

50 m/s

Diagram



Order Information

WAN-9151

Package Contents

WAN-9151
Pole Mount Kit
Quick Installation Guide

Optional Accessory



ANC-4110

1m Antenna Cable, CFD-400, N Male Plug to N Male Plug, Indoor/Outdoor



ANC-4130

3m Antenna Cable, N Male Plug to N Female Jack



ANC-4150

5m Antenna Cable, CFD-400, N Male Plug to N Male Plug, Indoor/Outdoor



ANC-4160

6m Antenna Cable, N Male Plug to N Female Jack