

- 3-CCT (3000K/4000K/5700K) selectable
- Deep recessed diffuser to reduce glare
- Switch on the back to select CCT
- 13W, 1000-1250lm
- Equipped with 2-pin Australia AS3112 plug, ready to plug-in
- Triac dimmable
- IC-4 insulation rated, can be covered by insulating material during insulation
- 90° beam angle
- Lifetime 40,000 hrs



Order Code 66325

### General Data

Lamp Socket Integrated downlight  
Design Deep Recessed diffuser

### Geometric Data

Height (mm) 97.3mm (including LED driver)  
Diameter (mm) 145mm  
Weight (g) TBC

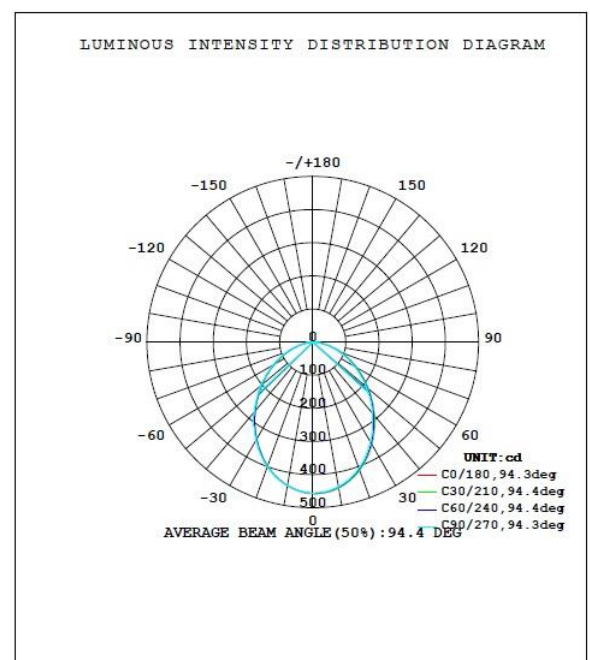
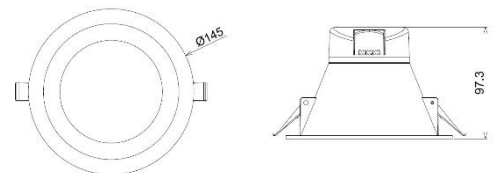
### Electric Data

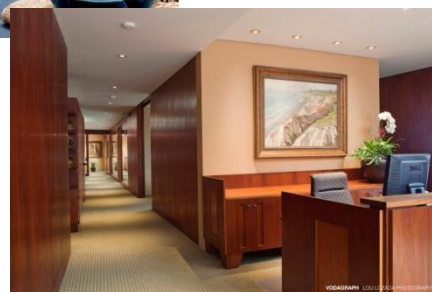
Wattage 13W  
Voltage 220-240 V AC  
Power Factor  $\geq 0.9$   
Operating Frequency 50/60 Hz

### Photometric Data

Total Luminous Flux (lm) 1000-1250lm  
90° cone Luminous Flux (lm) N/A  
CRI  $\geq 80$   
CCT 3000K/4000K/5700K  
Luminous Intensity (cd) TBC (measured at 4000K)  
Beam Angle (°) 90°  
Lifetime 40,000 hrs

### Equivalent to (W)





**Order Code**

66325

**Product Description**

Verbatim LED recessed downlight (deep recessed) 13W  
CCT selectable 1000-1250lm with AU plug (125/145mm)

**Technical Packaging Details**

Giftbox Barcode	6943760263251
Inner Carton Barcode	N/A
Outer Carton Barcode	26943760263255
Pack Dimensions (LxWxH)	155 mm x 155 mm x 107 mm
Pack Weight	TBC
Carton Qty (Shipping Unit)	24
Carton Dimensions (LxWxH)	480 mm x 325 mm x 450 mm
Cartons/Layer	6
Layers/Pallet	2
Units/Pallet	288