

- 3-CCT (3000K/4000K/5700K) selectable
- Deep recessed diffuser to reduce glare
- Switch on the back to select CCT
- 16W, 1500-1750lm
- Equipped with 2-pin Australia AS3112 plug, ready to plug-in
- Triac dimmable
- IC-4 insulation rated, can be covered by insulating material during insulation
- 90° beam angle
- Lifetime 40,000 hrs



Order Code 66326

General Data

Lamp Socket Integrated downlight
Design Deep Recessed diffuser

Geometric Data

Height (mm) 115.3mm (including LED driver)
Diameter (mm) 190mm
Weight (g) TBC

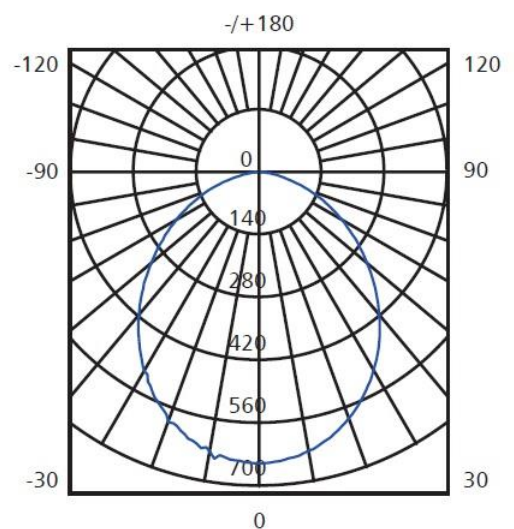
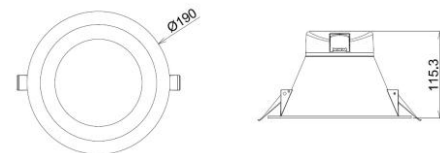
Electric Data

Wattage 16W
Voltage 220-240 V AC
Power Factor ≥ 0.9
Operating Frequency 50/60 Hz

Photometric Data

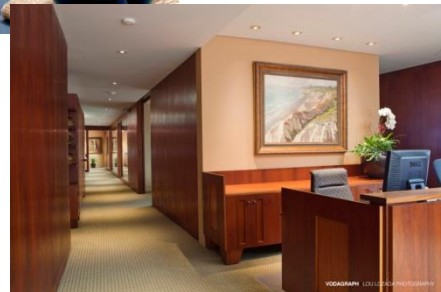
Total Luminous Flux (lm) 1500-1750lm
90° cone Luminous Flux (lm) N/A
CRI ≥ 80
CCT 3000K/4000K/5700K
Luminous Intensity (cd) TBC (measured at 4000K)
Beam Angle (°) 90°
Lifetime 40,000 hrs

Equivalent to (W)



UNIT: cd
AVERAGE BEAM ANGLE(50%): 97.9 DEG





Order Code

66326

Product Description

Verbatim LED recessed downlight (deep recessed) 16W
CCT selectable 1500-1750lm with AU plug (165/190mm)

Technical Packaging Details

Giftbox Barcode	6943760263268
Inner Carton Barcode	N/A
Outer Carton Barcode	26943760263262
Pack Dimensions (LxWxH)	200 mm x 200 mm x 126 mm
Pack Weight	TBC
Carton Qty (Shipping Unit)	12
Carton Dimensions (LxWxH)	415 mm x 415 mm x 400 mm
Cartons/Layer	4
Layers/Pallet	3
Units/Pallet	144