

Product Information

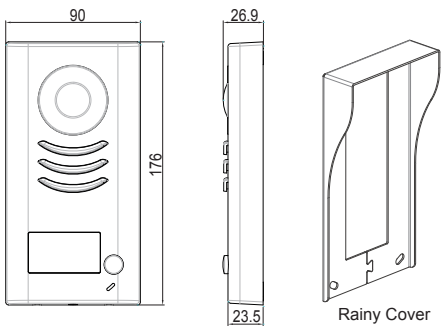
VT591&592 Series 4-Wire Outdoor Station



DESCRIPTION

4-wire system color outdoor station with rainy cover

DIMENSION



FEATURES

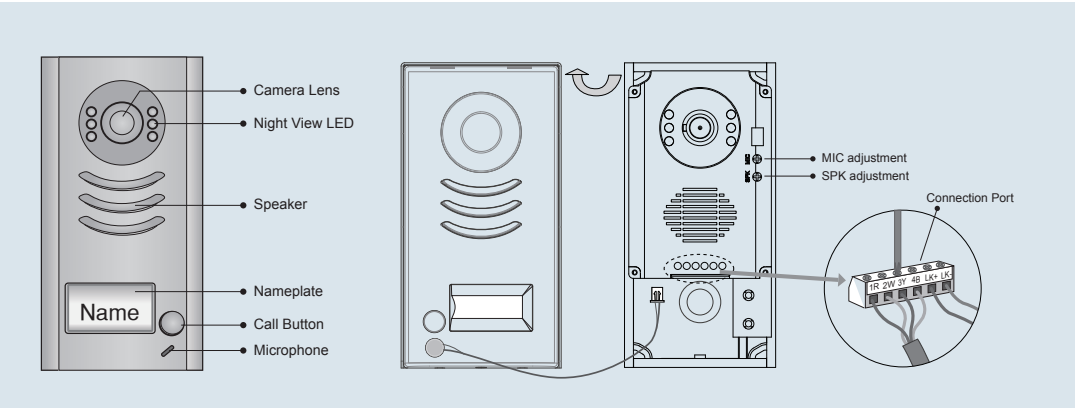
- ▶ Pinhole-lens camera;
- ▶ Zinc alloy housing;
- ▶ Strong waterproof;
- ▶ Camera's angle is adjustable;
- ▶ Name plate display with white led background
- ▶ Surface wall mounting by a rain cover;
- ▶ IP 55 waterproof protection;
- ▶ Compatible with all VT devices

*1 VT592 is for two families with two call buttons

*1 depends on model

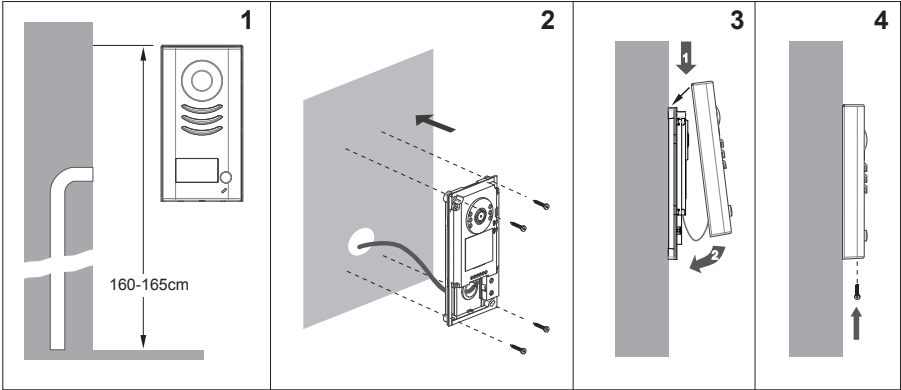
Note:VT592 has two call buttons

1. Parts and Functions

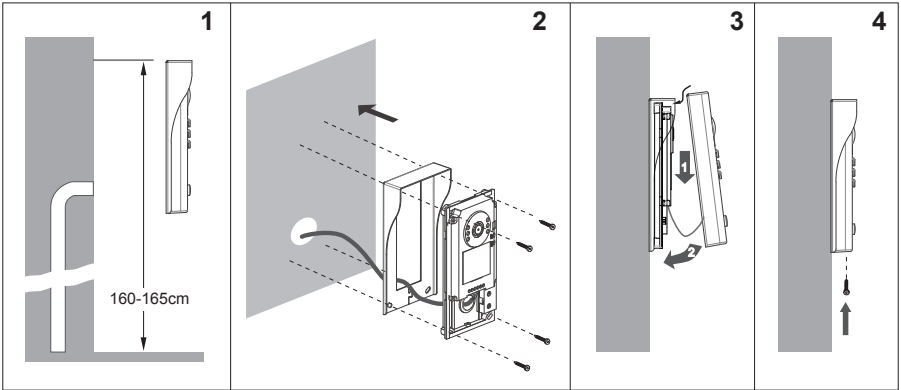


2. Door Station Mounting

Mounting without rainy cover



Mounting with rainy cover



3. Specification

- * Power Supply : DC 12V (supplied by indoor monitor)
- * Power Consumption: Standby 50mA; Working status 200mA;
- * Camera: 1/4" Pinhole Sharp Color CCD; 420 TV Lines;
- * Unlocking time: 1-9S, set by monitor;
- * Talk Time: 90S;
- * Lock Power supply: 12Vdc, 300mA(Internal Power)
- * Temperature: -10°C~+45°C
- * Wiring: 4 wires (Polarity)
- * Dimension: 176(H)×90(W)×24(D)mm

4. Ordering Information for Door Station

Model No.	Brief Description	Remark
VT591/C/RH	Color CCD outdoor station with rain cover	NSTC,PAL must be specified
VT592/C/RH	Color CCD outdoor station for two family with rain cover	NSTC, PAL must be specified

5. Packing Information



Dimensions: 202(H)×100(W)×60(D)mm
Gross Weight: 0.75Kg



Carton: 415 (H)×360 (W)×265 (D)mm
Quanlity: 28PCS