

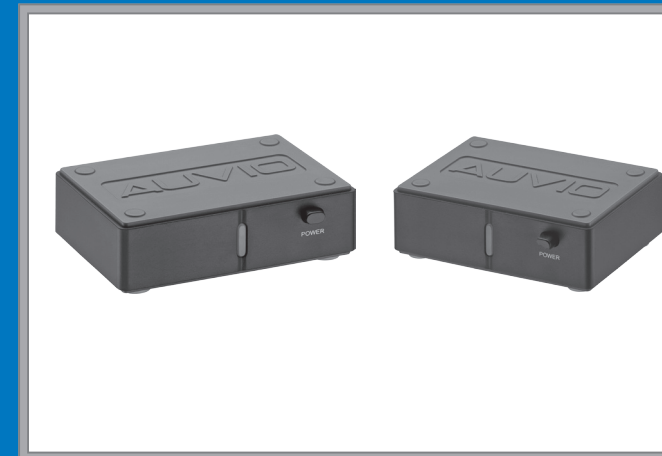
# AUVIO®

THE PERFORMANCE YOU NEED™

## Wireless Subwoofer Kit

Please read this user's guide before using your new subwoofer kit.

User's Guide 1500492



- ### Package Contents
- Transmitter
  - Receiver
  - 9V AC Adapter (2)
  - User's Guide
- ### Features
- 2.4GHz digital wireless link provides crystal clear audio.
  - 34-channel selection.
  - Up to 100 feet (30.5m) operation distance between transmitter and receiver (line of sight).

### Specifications

Audio Output Level .....	2 V
Frequency Response .....	20-200Hz
Audio Distortion .....	<1%
Signal to Noise Ratio .....	>80dB

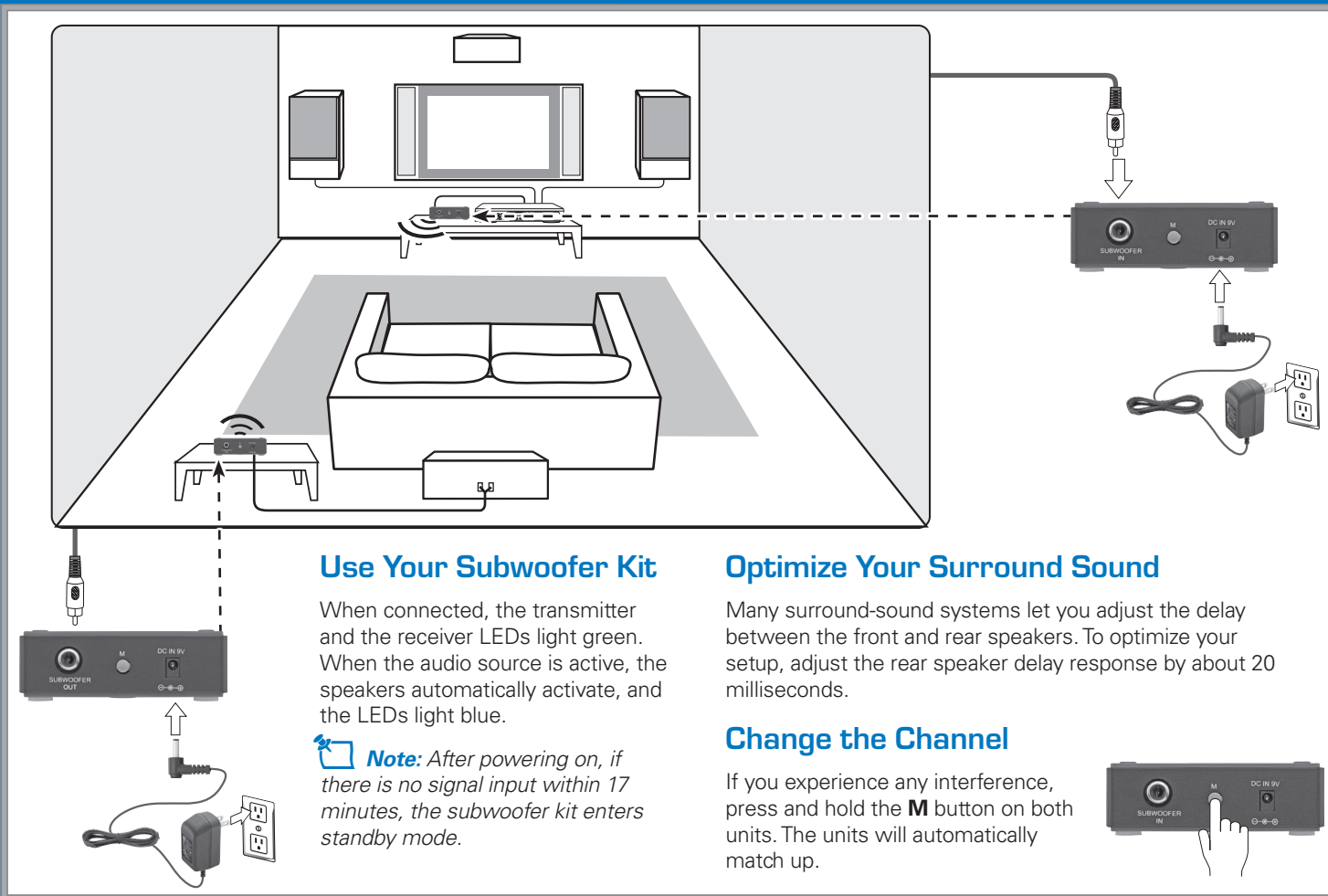
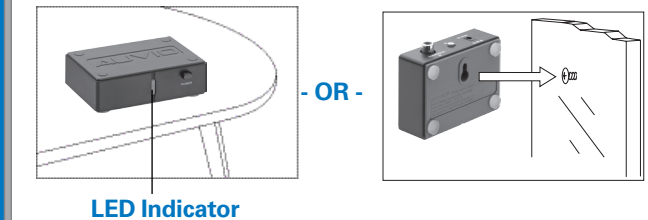
Specifications are subject to change and improvement without notice. Actual product may vary from the images found in this document.

### Set up the Transmitter and Receiver

Place the transmitter and receiver within 100 feet of each other, on a flat surface or mounted on a wall.

- With the audio source off, connect the transmitter to the subwoofer jack with an RCA cable (not included).
- Connect the supplied AC adapter (9V, 200mA) to the transmitter **DC IN 9V** jack, and then plug it into a standard household outlet.
- Connect the receiver to your subwoofer with an RCA cable (not included).
- Connect the supplied AC adapter (9V, 200 mA) to the receiver **DC IN 9V** jack, and then plug it into a standard household outlet.

- Note:**
- Use only the supplied AC adapters. Using adapters not designed for this product may cause damage.
  - If you mount the receiver on a wall, do not block the ventilation slots.
  - Unplug the AC adapters from the AC outlet before disconnecting from the transmitter or receiver.



### Use Your Subwoofer Kit

When connected, the transmitter and the receiver LEDs light green. When the audio source is active, the speakers automatically activate, and the LEDs light blue.

**Note:** After powering on, if there is no signal input within 17 minutes, the subwoofer kit enters standby mode.

### Optimize Your Surround Sound

Many surround-sound systems let you adjust the delay between the front and rear speakers. To optimize your setup, adjust the rear speaker delay response by about 20 milliseconds.

### Change the Channel

If you experience any interference, press and hold the **M** button on both units. The units will automatically match up.



### FCC Information

This equipment has been tested and found to comply with the limits for a Class B digital device, pursuant to Part 15 of the FCC Rules. These limits are designed to provide reasonable protection against harmful interference in a residential installation. This equipment generates, uses and can radiate radio frequency energy and, if not installed and used in accordance with the instructions, may cause harmful interference to radio communications. However, there is no guarantee that interference will not occur in a particular installation. If this equipment does cause harmful interference to radio or television reception, which can be determined by turning the equipment off and on, the user is encouraged to try to correct the interference by one or more of the following measures:

- Reorient or relocate the receiving antenna.
- Increase the separation between the equipment and receiver.
- Connect the equipment into an outlet on a circuit different from that to which the receiver is connected.
- Consult the dealer or an experienced radio/TV technician for help.

If you cannot eliminate the interference, the FCC requires that you stop using your product. Changes or modifications not expressly by the party responsible for compliance could void the user's authority to operate the equipment.

This device complies with Part 15 of the FCC Rules. Operation is subject to the following two conditions: (1) This device may not cause harmful interference, and (2) this device must accept any interference received, including interference that may cause undesired operation.

### Limited Warranty

Ignition L.P. warrants this product against defects in materials and workmanship under normal use by the original purchaser for **ninety (90) days** after the date of purchase. IGNITION L.P. MAKES NO OTHER EXPRESS WARRANTIES.

This warranty does not cover: (a) damage or failure caused by or attributable to abuse, misuse, failure to follow instructions, improper installation or maintenance, alteration, accident, Acts of God (such as floods or lightning), or excess voltage or current; (b) improper or incorrectly performed repairs by persons who are not a Ignition L.P. Authorized Service Facility; (c) consumables such as fuses or batteries; (d) ordinary wear and tear or cosmetic damage; (e) transportation, shipping or insurance costs; (f) costs of product removal, installation, set-up service, adjustment or reinstallation; and (g) claims by persons other than the original purchaser.

Should a problem occur that is covered by this warranty, take the product and the sales receipt as proof of purchase date to the place of purchase. Ignition L.P. will, at its option, unless otherwise provided by law: (a) repair the product without charge for parts and labor; (b) replace the product with the same or a comparable product; or (c) refund the purchase price. All replaced parts and products, and products on which a refund is made, become the property of Ignition L.P. New or reconditioned parts and products may be used in the performance of warranty service. Repaired or replaced parts and products are warranted for the remainder of the original warranty period. You will be charged for repair or replacement of the product made after the expiration of the warranty period.

IGNITION L.P. EXPRESSLY DISCLAIMS ALL WARRANTIES AND CONDITIONS NOT STATED IN THIS LIMITED WARRANTY. ANY IMPLIED WARRANTIES THAT MAY BE IMPOSED BY LAW, INCLUDING THE IMPLIED WARRANTY OF MERCHANTABILITY AND, IF APPLICABLE, THE IMPLIED WARRANTY OF FITNESS FOR A PARTICULAR PURPOSE, SHALL EXPIRE ON THE EXPIRATION OF THE STATED WARRANTY PERIOD.

EXCEPT AS DESCRIBED ABOVE, IGNITION L.P. SHALL HAVE NO LIABILITY OR RESPONSIBILITY TO THE PURCHASER OF THE PRODUCT OR ANY OTHER PERSON OR ENTITY WITH RESPECT TO ANY LIABILITY, LOSS OR DAMAGE CAUSED DIRECTLY OR INDIRECTLY BY USE OR PERFORMANCE OF THE PRODUCT OR ARISING OUT OF ANY BREACH OF THIS WARRANTY, INCLUDING, BUT NOT LIMITED TO, ANY DAMAGES RESULTING FROM INCONVENIENCE AND ANY LOSS OF TIME, DATA, PROPERTY, REVENUE, OR PROFIT AND ANY INDIRECT, SPECIAL, INCIDENTAL, OR CONSEQUENTIAL DAMAGES, EVEN IF IGNITION L.P. HAS BEEN ADVISED OF THE POSSIBILITY OF SUCH DAMAGES.

Some states do not allow limitations on how long an implied warranty lasts or the exclusion or limitation of incidental or consequential damages, so the above limitations or exclusions may not apply to you. This warranty gives you specific legal rights, and you may also have other rights which vary from state to state. You may contact Ignition L.P. at:

Ignition L.P.  
3102 Maple Ave. Suite 450  
Dallas, TX 75201

For product support, call  
**1-866-315-0426**

Complies with the European Union's "Restriction of Hazardous Substances Directive," which protects the environment by restricting specific hazardous materials and products.

© 2013, Ignition L.P. All rights reserved. Auvio is a registered trademark used by Ignition L.P.  
Package and user documentation are recyclable. User documentation contains recycled material.

