

Wireless Display Transmitter & Receiver

Model Name: HXT-9906



Version 1.0

Revision History

Rev	Date	Reason for Changes
x.00	2025/0x/xx	□ 1 st first release

ii
Contents

1.0 INTRODUCTION..... 1

 1.1 BRIEF 1

 1.2 PRODUCT FEATURE 1

 1.3 INSTALLATION 2

 1.4 MANUALLY PAIR (IF NEEDED)..... 3

2.0 REQUIREMENTS 4

 2.1 HARDWARE SPECIFICATION 4

 2.1.1 Main Component 4

 2.1.2 Hardware Interface..... 4

 2.1.3 LED Indicator for..... 5

 2.1.4 Electrical Characteristic 5

 2.2 MECHANICAL REQUIREMENTS 6

 2.2.1 Dimension..... 6

 2.3 ENVIRONMENTAL REQUIREMENTS 7

1.0 Introduction

1.1 Brief

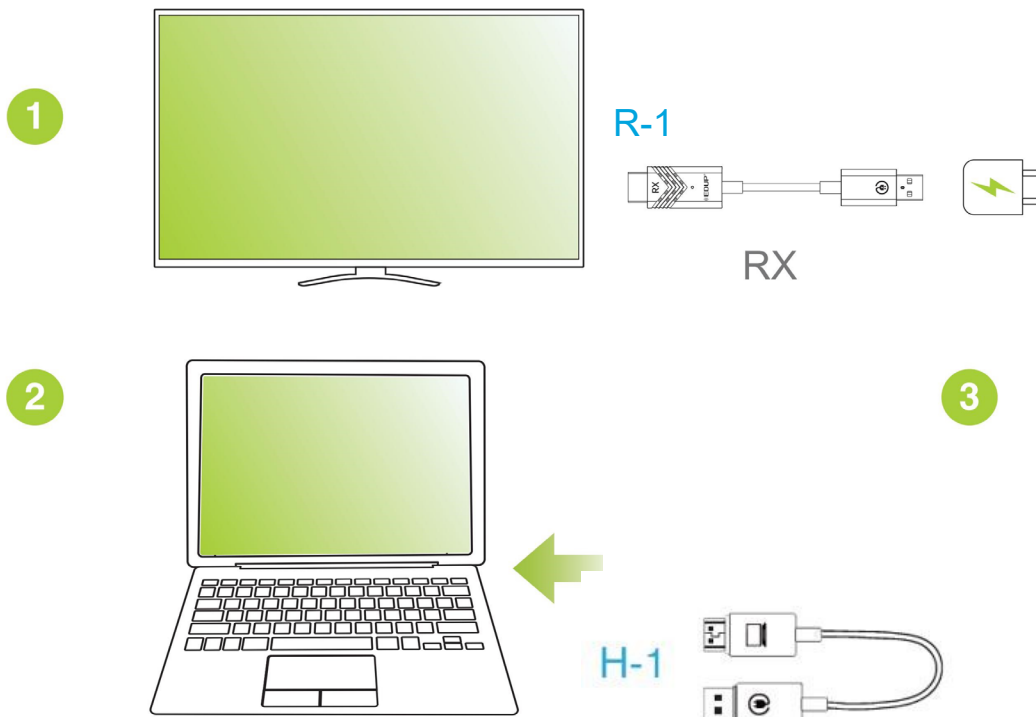
This document provides an overview of the requirements for the HXT-9906. HXT-9906 is a pair of Full HD wireless display transmitter & receiver. It integrates a high-performance video encoder/decoder and a 5GHz Wi-Fi module with high-sensitivity antennas to provide screen mirroring and extended display functions.

Transmitter	
Main Chip	AM8360D
Model	HXT-9906 Transmitter
Network	IEEE 802.11n 5GHz 1T1R
Interface	HDMI
Max. Resolution	1920x1080
Function	Screen Mirror/Extend
Colour	White
Power	DC5V/0.5A
Receiver	
Model	HXT-9906 Receiver
Main Chip	AM8268D
Network	IEEE 802.11n 5GHz 1T1R
Interface	HDMI
Max. Resolution	1920x1080
Function	Screen Mirror/Extend
Colour	White
Power	DC5V/0.5A

1.2 Product Feature

- **Wi-Fi:**
 - IEEE 802.11n 5GHz 1T1R
- **Full HD Output**
- **Screen Mirror**
- **Screen Extend (Windows/macOS)**
- **Netflix App support (The standalone receiver cannot display DRM streaming)**
- **Proprietary Protocol**
- **Long Distance**
- **Low Power Consumption**
- **Low Latency**
- **CSA (Channel switch announcement) supported, auto channel switch if current channel jamming.**

1.3 Installation



Installation procedure:

1. Connect the HDMI and USB ports of the receiver to the display device such as the TV or projector.
2. Connect the HDMI and USB ports of the transmitter of the wireless transmitter to the source device such as laptops, desktops, set-top box cameras, and camcorders.
3. After the connection is complete, the blue light of the transmitter will blink first, and becomes steady. When the connection is successful, the screen will show the video.

Note:

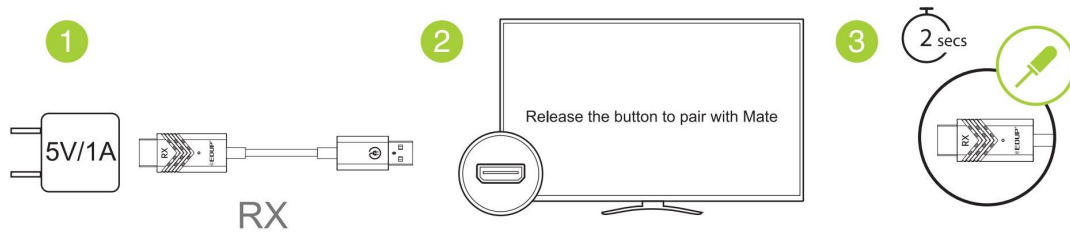
1. Equipment operating temperature: About 50 degrees ,but it is normal temperature which does not affect the use.
2. The device has been paired before leaving the factory, and the user does not need to re-pair.
3. The RX light at the receiving end will not flash and only serves as a power indicator light

1.4 Manually Pair (If needed)

Pairing Steps

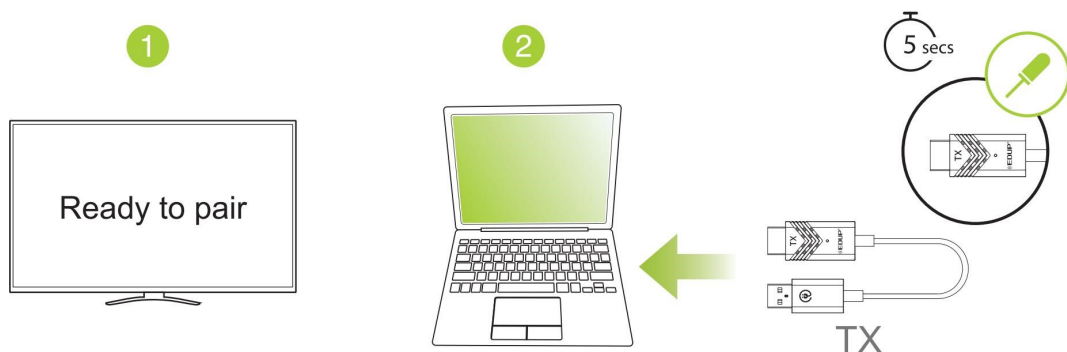
1 Receiver side

- (1) Connect the receiver USB port to the USB power supply or device with USB port
- (2) Connect the receiver HDMI port to the display device
- (3) use a paperclip to press the reset button on HDMI side of the receiver for about 2 seconds (not so long), wait for the screen to display "Release the button to pair with Mate" then immediately release the button



2 Transmitter side

- (1) Connect the transmitter USB port to a USB-powered device, and wait for the screen to display "Ready to pair".
- (2) Use a paperclip to insert the pairing/reset hole at the HDMI end and press the pairing button for 5 seconds, wait until the signal light goes off and release the button.
- (3) Then wait for the screen to show "√" to indicate successful pairing.



Attention:

The reset hole on the receiver side of the wireless transmission has two setting modes depending on the pressing time.

(1) Press and hold for 2 seconds: open the pairing mode of the receiver for pairing with the transmitter, so the pairing button can not be pressed for too long

(2) long press 10 seconds: the receiver back to the original factory settings.

2.0 Requirements

The following sections is to identify the detailed requirements of the HXT-9906 Transmitter and HXT-9906 Receiver.

2.1 Hardware Specification

2.1.1 Main Component

HXT-9906 Transmitter	Hardware Component	Detailed Description
2.1.1.1	Main Chip	<ul style="list-style-type: none"> AM8360D
2.1.1.2	Wi-Fi	<ul style="list-style-type: none"> AM9421
2.1.1.3	Flash	<ul style="list-style-type: none"> SNOR 8 MB
HXT-9906 Receiver		
2.1.1.4	Main Chip	<ul style="list-style-type: none"> AM8268D
2.1.1.5	Wi-Fi	<ul style="list-style-type: none"> AM9421
2.1.1.6	Flash	<ul style="list-style-type: none"> SNOR 8 MB

2.1.2 Hardware Interface

HXT-9906 Transmitter	Feature	Detailed Description
2.1.2.1	HDMI Interface	<ul style="list-style-type: none"> HDMI 1.4a with HDCP 1.4
2.1.2.2	USB Interface	<ul style="list-style-type: none"> Only for power input (5V/1A USB adapter)
2.1.2.3	Button (Pin hole)	<ul style="list-style-type: none"> Press 5s for paring the HXT-9906 Receiver as the display device shows” Ready to pair”
HXT-9906 Receiver		
2.1.2.4	HDMI Interface	<ul style="list-style-type: none"> HDMI 1.4a with HDCP 1.4
2.1.2.5	USB Interface	<ul style="list-style-type: none"> Only for power input (5V/1A USB adapter)
2.1.2.6	Button (Pin hole)	<ul style="list-style-type: none"> Press 5s to start the pairing process

2.1.3 LED Indicator for

HXT-9906 Transmitter	Status	Detailed Description
LED Light	Solid	<ul style="list-style-type: none"> Device is connected to RX successfully and is able to be operated properly.
	Blinking (Slow)	<ul style="list-style-type: none"> The device is ready and trying to connect to RX as Receiver is being connected up.
	Blinking (Fast)	<ul style="list-style-type: none"> The device is processing to pair with RX.
	Light off	<ul style="list-style-type: none"> The device has malfunctioned, OR no power input.
HXT-9906 Receiver		
LED Light	Solid	<ul style="list-style-type: none"> Device is connected to 5V/1A power successfully.

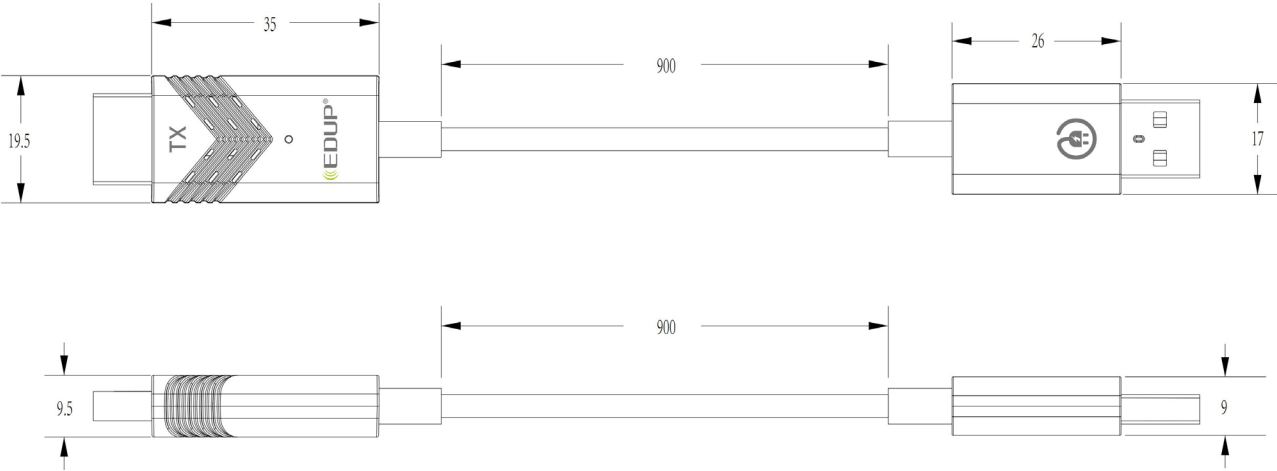
2.1.4 Electrical Characteristic

HXT-9906 Transmitter	Feature	Detailed Description
2.1.4.1	Power Input	<ul style="list-style-type: none"> 5V/0.5A
2.1.4.2	Power Consumption	<ul style="list-style-type: none"> 1.5 W
HXT-9906 Receiver		
2.1.4.3	Power Input	<ul style="list-style-type: none"> DC 5V/0.5A
2.1.4.4	Power Consumption	<ul style="list-style-type: none"> 1.5W

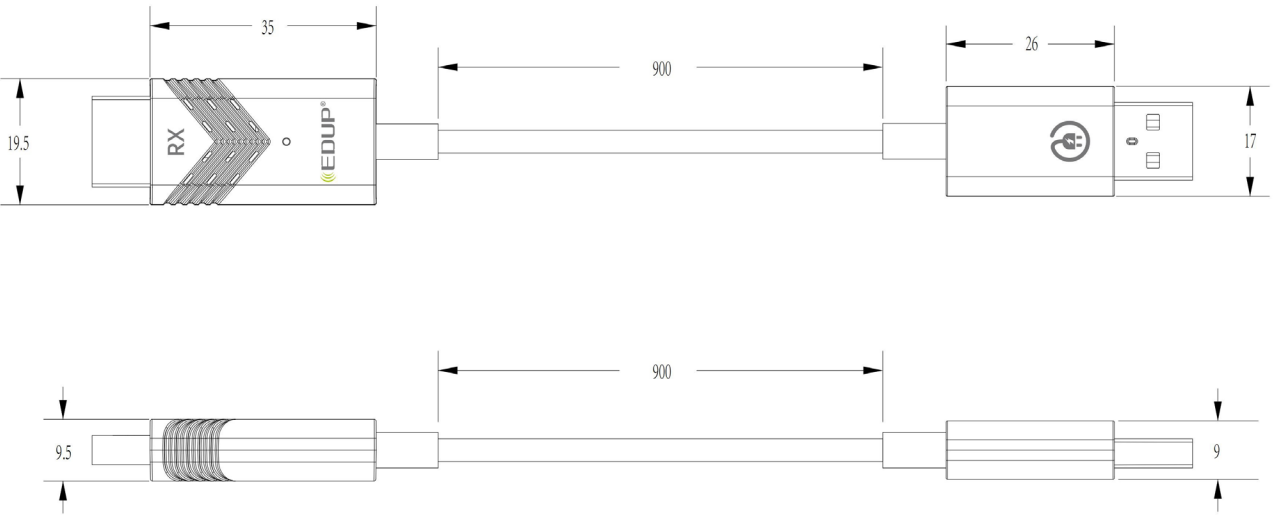
2.2 Mechanical Requirements

2.2.1 Dimension

2.2.1.1 HXT-9906 Transmitter



2.2.1.2 HXT-9906 Receiver



2.3 Environmental Requirements

	Feature	Detailed Description
2.3.1	Operating Temperature Conditions	<ul style="list-style-type: none">• The product is capable of continuous reliable operation when operating in ambient temperature of 0 °C to +35°C.
2.3.2	Non-Operating Temperature Conditions	<ul style="list-style-type: none">• Neither subassemblies are damaged nor the operational performance be degraded when restored to the operating temperature after exposing to storage temperature in the range of -20 °C to +70 °C.
2.3.3	Operating Humidity conditions	<ul style="list-style-type: none">• The product is capable of continuous reliable operation when subjected to relative humidity in the range of 10% and 90% non-condensing.
2.3.4	Non-Operating Humidity Conditions	<ul style="list-style-type: none">• The product is not damaged, nor the performance be degraded after exposure to relative humidity ranging from 5% to 90% noncondensing.