



# Kasa Smart Light Bulb

Multicolor

KL130B



Remote Control



Scheduling



No Hub Required

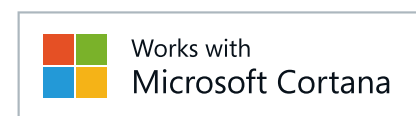


Voice Control

# Highlights

## Multicolor

With a wide range of colors and adjustable brightness, the Kasa bulb offers endless lighting possibilities to fit any environment and mood. You can choose a light for everything from a dinner party to a late-night study session.



## Multi-scene

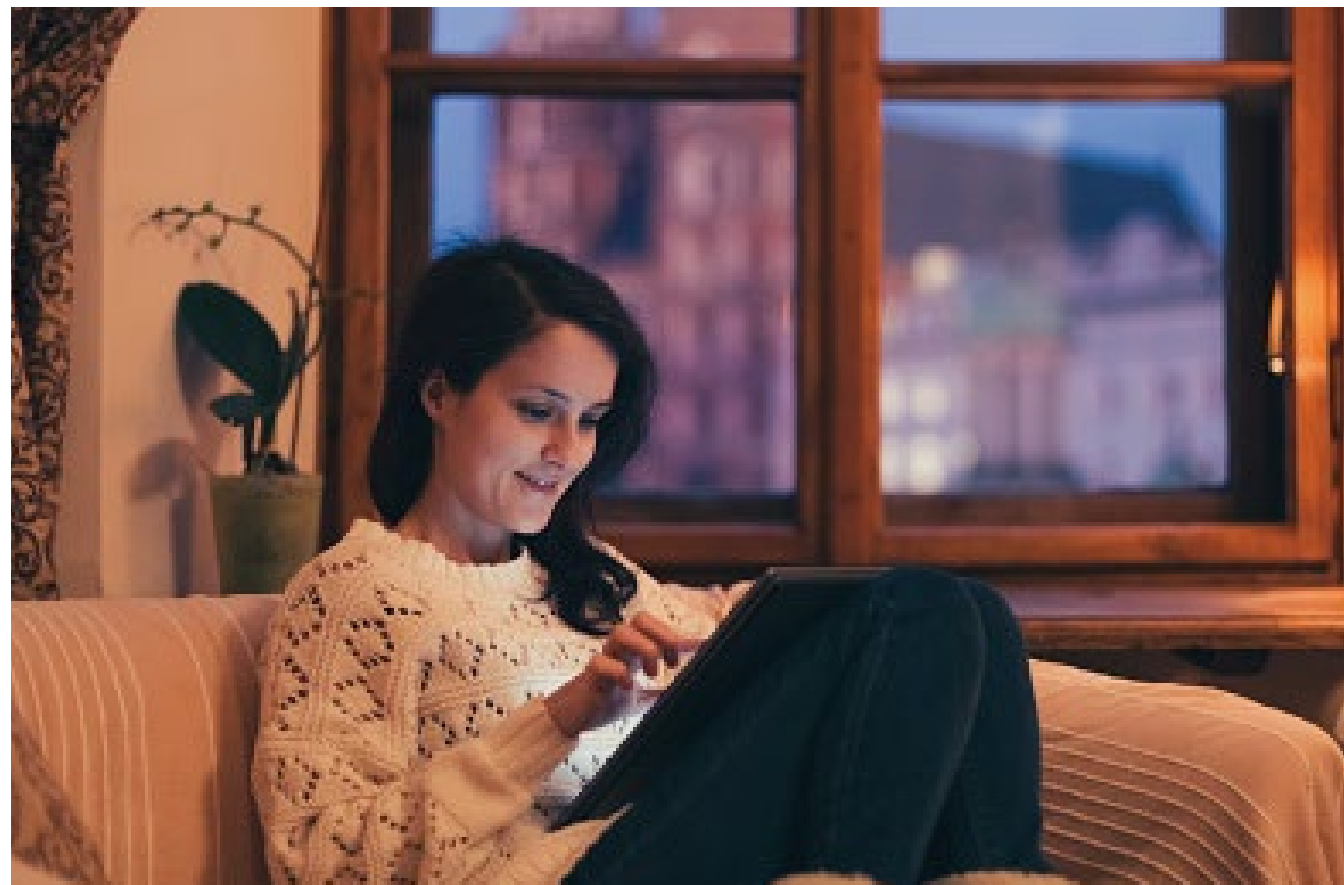
Create multiple scenes like theater scene, party scene or sleeping scene with different settings for various occasions, and tap yours when you want the light your way.



# Highlights

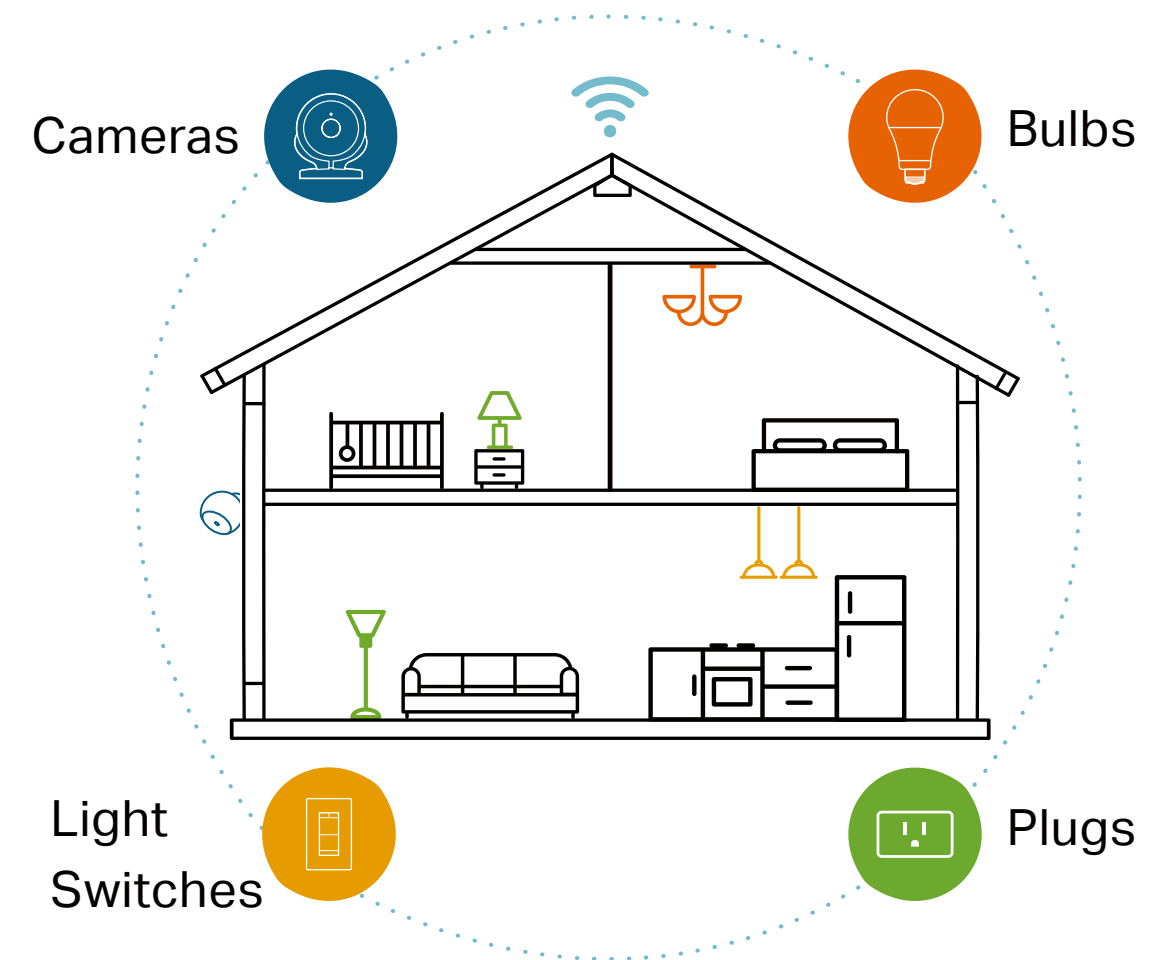
## Schedules

Use your Kasa Smart app to schedule your light bulb to automatically switch on and off when you're home or away.



## Your Home. One App.

With the Kasa Smart app, you can easily access and control smart plugs, cameras, light switches, bulbs and more. Checking in on your home is only a few taps away.



Learn more at [tp-link.com/smarthome](https://tp-link.com/smarthome)

# Features



## Ease of Use

- No Hub Required – Connect to your existing Wi-Fi router with no extra hub required
- Remote Control – Control your smart bulbs from anywhere with the free Kasa app
- Scheduling – Set schedules to turn on/off the smart bulbs at any chosen time for your convenience
- Multi-scene – Save your light settings as different scenes to enjoy instant access to them
- Auto White – Set your bulb to automatically adjust its color temperature to match natural light patterns from dawn to dusk



## Compatibility

- Works with Voice Assistants – Control smart bulbs using the leading voice assistants such as Amazon Alexa, Google Assistant and Microsoft Cortana
- Works with IFTTT – Set interactions between a wide array of devices, software, and services using IFTTT
- Compatible with Android, iOS – The free Kasa app lets you run smart bulbs from any Android (4.4 and higher) or iOS (iOS 10 and higher) devices.



## Lighting

- Multicolor – Choose a different color for any occasion.
- Durable Bulb – Provide you stable and customized lighting for up to 22.8 years\*\*

\*60W equivalent

\*\*Based on 3hrs/day

# Specifications

## Working Status

- Typical Lumen Output: 800lm
- Input Power (Actual power draw in Watts): 10W
- Color Temperature: 2500K ~ 9000K (adjustable via app and cloud)
- Rated Input Voltage: 220 -240V 50/60Hz
- Beam Angle: 230 Degrees typical
- Dimmable: Yes (via app and cloud only)
- Tunable: Yes (via app and cloud only)
- Color Changing: Yes (via app and cloud only)

## Network

- Secured home Wi-Fi connection required
- Wi-Fi Protocol: IEEE 802.11b/g/n
- Wi-Fi Frequency: 2.4GHz
- System Requirements: Android 4.4 or higher, iOS 10 or higher

## General

- Package Contents:
  - Kasa Smart Light Bulb
  - Quick Start Guide
- Lamp Base: A60 bulb, B22 fitting
- Weight: 0.304 lb (0.138kg)
- Dimensions: 2.36 x 4.76 in (60 x 121 mm)
- Certifications: CE, RoHS, SAA, RCM
- Operating Temperature: -15 °C~ 40 °C (5°F ~ 104°F )
- Operating Humidity: 10%~90%RH, Non-condensing

Specifications are subject to change without notice. TP-Link is a registered trademark of TP-Link Technologies Co., Ltd. Other brands and product names are trademarks or registered trademarks of their respective holders. Copyright ©2019 TP-Link Technologies Co., Ltd. All rights reserved.

[www.tp-link.com](http://www.tp-link.com)