



# airCube™

airMAX® Home Wi-Fi Access Point with PoE In/Out

Models: ACB-AC, ACB-ISP

PoE Passthrough for Powering a 24V CPE Device

Managed by UNMS™, Ubiquiti Network Management System

UNMS App for Fast Setup from a Mobile Device



# Introduction

Ubiquiti Networks introduces the airCube™, a cost-effective wireless access point for use in your customer deployments.

## Wireless Performance

Two models are available:

- **airCube AC** Dual-band, 802.11ac, 2x2 MIMO technology for maximum wireless performance:
  - **2.4 GHz radio band** Speeds of up to 300 Mbps
  - **5 GHz radio band** Speeds of up to 866.7 Mbps
- **airCube ISP** 802.11n, 2x2 MIMO Wi-Fi for speeds of up to 300 Mbps in the 2.4 GHz radio band

## Versatile Power Options

Both models offer convenient PoE passthrough to power a 24V airMAX CPE device, so you can use a single PoE adapter to power both devices.

To provide sufficient power for PoE passthrough:

- The airCube AC requires the included power adapter or 24V, 1A PoE input.
- The airCube ISP requires 24V, 1A PoE input.

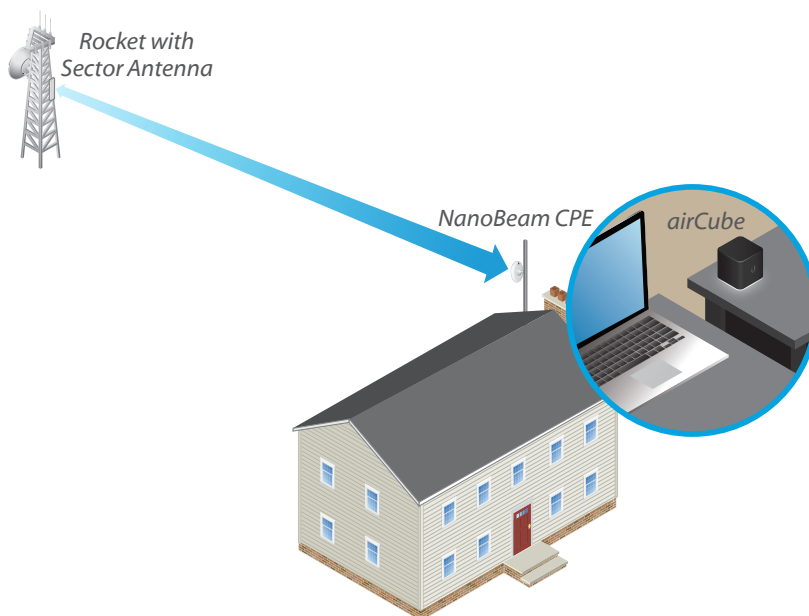
## Intuitive Software

Management options feature a graphical user interface designed for streamlined setup and control.

Available options include:

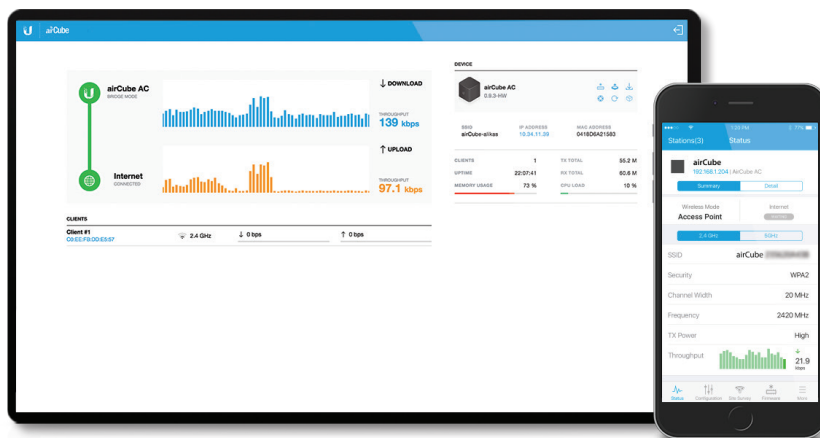
- **UNMS** Provides advanced remote control of Ubiquiti® devices. Use the UNMS™ app to manage your devices using a tablet or smartphone.
- **Web UI** Enables a standalone utility for basic configuration.

## Example of a Typical Deployment



*Point-to-MultiPoint (PtMP) link: The airCube powers a NanoBeam® 5AC Gen 2 CPE, which connects to a Rocket® Prism® 5AC Gen 2 on an airMAX ac Sector Antenna.*

## Management Screens



# Models

## airCube™ AC

### Model: airCube-AC

- (4) Gigabit Ethernet Ports
- 24V PoE Passthrough for airMAX CPE
- Dual-Band, 802.11ac, 2x2 MIMO Technology
- Up to 300 Mbps in the 2.4 GHz Radio Band
- Up to 866.7 Mbps in the 5 GHz Radio Band
- Powered by 24V Passive PoE or Included Power Adapter



## airCube™ ISP

### Model: airCube-ISP

- (4) 10/100 Fast Ethernet Ports
- 24V PoE Passthrough for airMAX CPE
- 802.11n, 2x2 MIMO Technology
- Up to 300 Mbps in the 2.4 GHz Radio Band
- Powered by 24V Passive PoE or 2A Micro USB Adapter (Not Included)



### Model Comparison Chart

| Model       | Ports       | Radio Bands   | Wi-Fi                | Power Input       | PoE Passthrough | Powers airMAX Device |
|-------------|-------------|---------------|----------------------|-------------------|-----------------|----------------------|
| airCube-AC  | (4) Gigabit | 2.4 and 5 GHz | 802.11ac<br>2x2 MIMO | 24V, 1A PoE       | ✓               | ✓                    |
|             |             |               |                      | Power Adapter     | ✓               | ✓                    |
| airCube-ISP | (4) 10/100  | 2.4 GHz       | 802.11n<br>2x2 MIMO  | 24V, 1A PoE       | ✓               | ✓                    |
|             |             |               |                      | Micro USB Adapter |                 |                      |

# Specifications

| airCube-AC                |   |            |
|---------------------------|---|------------|
| Dimensions                | 87.80 x 89.50 x 89.25 mm<br>(3.46 x 3.52 x 3.51")   |            |
| Weight                    | 280 g (9.88 oz)                                     |            |
| Power Supply              | 24VDC   |            |
| Power Method              | 24VDC, 0.83A or<br>PoE 24V In on LAN Port 1         |            |
| Supported Power Voltage   | 22-26V  |            |
| Max. Power Consumption    | 8.5W  |            |
| PoE Out                   | Controllable 24V PoE Out (+4, 5; -7, 8) on WAN Port |            |
| Management Interface      | Wi-Fi / Ethernet                                    |            |
| Networking Interface      | (4) Gigabit Ethernet Ports                          |            |
| LED                       | Status  |            |
| Max. TX Power             | 23dbm (5GHz); 19dbm (2.4GHz)                        |            |
| Antenna Gain              | 2.4 GHz   | 5 GHz      |
|                           | 4 dBi   | 5 dBi      |
| Max. Speeds               | 2.4 GHz   | 5 GHz      |
|                           | 300 Mbps  | 866.7 Mbps |
| Enclosure Characteristics | Black Plastic                                       |            |
| ESD/EMP Protection        | ±24 kV Contact / Air                                |            |
| Operating Temperature     | -10 to 50° C (-14 to 122° F)                        |            |
| Operating Humidity        | 5 to 95% Noncondensing                              |            |
| Certifications            | CE, FCC, IC   |            |



# Specifications

| airCube-ISP               |  |
|---------------------------|--|
| Dimensions                | 87.80 x 89.50 x 89.25 mm<br>(3.46 x 3.52 x 3.51")                  |
| Weight                    | 215 g (7.58 oz)  |
| Power Supply              | 5V   |
| Power Method              | PoE 24V In on LAN Port 1 or<br>2A Micro USB Adapter (Not Included) |
| Supported Power Voltage   | 4.95-5.05V   |
| Max. Power Consumption    | 5W   |
| PoE Out                   | Controllable 24V PoE Out (+4, 5; -7, 8) on WAN Port                |
| Management Interface      | Wi-Fi / Ethernet   |
| Networking Interface      | (4) 10/100 Fast Ethernet Ports                                     |
| LED                       | Status   |
| Max. TX Power             | 19 dBm   |
| Antenna Gain              | 4 dBi  |
| Max. Speeds               | 300 Mbps   |
| Enclosure Characteristics | Black Plastic  |
| ESD/EMP Protection        | ±24 kV RJ-45 Interface   |
| Operating Temperature     | -10 to 50° C (-14 to 122° F)                                       |
| Operating Humidity        | 5 to 95% Noncondensing   |
| Certifications            | CE, FCC, IC  |

