



Compact high definition.

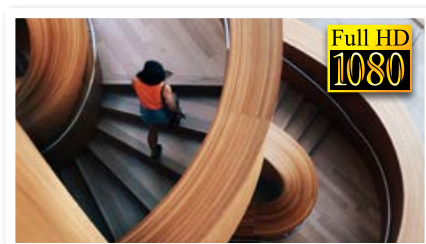
Compact Series: Fixed Dome with 1080p Full HD

Achieve over double the image resolution of analogue with the Watchguard range of compact HDCVI cameras. Stream in real-time at 1080p Full HD with these lightweight, weather resistant, easy-install surveillance cameras.

- Streams Full HD 1080p/2.0MP (1920 x 1080)
- Fixed 3.6mm lens; 82.8° viewing angle
- Up to 500m Full HD video transmission over coax
- Infrared illumination up to 20m
- IP67 rated for weather resistance
- Compact size with adjustable mount
- All metal construction
- HDCVI/Analogue switchable BNC video output



Compact for Easy Installation



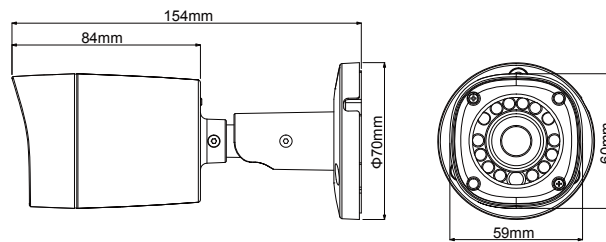
Full HD Resolution



IP67 Weather Resistant

Series Specifications

Model	VSCVI2MPFBIRV2
General	
Camera Style	Weather Resistant Mini Bullet
Image Sensor	1/2.9" 2 Megapixel CMOS
Effective Pixels	1984 (H) x 1097 (V)
Signal Noise Ratio	> 50dB
Camera	
Lens	3.6mm Fixed Lens
Angle of View	82.8°
Electronic Shutter	1/25 ~ 1/100,000s
Minimum Illumination	0.02 Lux at F2.0 (Colour) / 0 Lux IR Active
Day/Night	Auto (ICR) / Colour / B&W
White Balance	Auto
Noise Reduction	2D
Gain Control	Auto
Backlight Compensation	DWDR
Audio Input	N/A
Transmission Distance	Over 500m via 75-3 coaxial cable
Synchronisation	Internal
OSD Menu	Support
Alarm Interface	N/A
Video	
Video Compression	H.264
Resolution	1080p (1920x1080) / 720p (1280x720) / D1 (704x576)
Frame Rate	25/50fps @ 720p; 25fps @ 1080p
Video Output	1-channel BNC high definition video output/ CVBS standard definition video output (Switchable)
Environment	
Ingress Protection	IP67
Vandal Resistant	No
Maximum Infrared Range	20m
Power Input	12VDC
Power Consumption	< 2.8W
Dimensions	Ø70 x 156mm
Weight	0.30kg
Operating Environment	-30° to 60°C / RH95% (max)
Product Diagram	



Compatible Accessories

Accessories sold separately, additional adapters may be required.



VSBKTA122



VSBKTA152



VSBKTA151



VSBKTA150

Your local Watchguard™ professionals: