

**battery type:** Lithium - Iron Disulfide  
**battery size:** IEC: FR03; ANSI: AAA; L92; Micro  
**chemical system:** Li-FeS<sub>2</sub>

**Conditions**

**nominal voltage:** 1.5 V  
**open circuit voltage:** 1.79...1.89 V new battery  
 1.75...1.89 V after 1 year storage at 20°C

**capacity rated:** 1200 mAh all measurements at 20°C ambient  
 discharge at 75ohms load; 24hours/day  
 End Voltage (EV): 0.9V

**minimum:** 1100 mAh discharge at 20mA constant current  
 End Voltage (EV): 0.9V

1050 mAh discharge at 500mA constant current  
 End Voltage (EV): 0.8V

**typical service output (new batteries)**

≥ 670 cycles load resistor 3.6ohms; EV: 0.9V  
 discharge 15s/m 24h/d

≥ 220 min load resistor: 5.1ohms; EV: 0.9V  
 discharge 4min/h 8h/d

≥ 460 min load resistor: 10ohms; EV: 0.9V  
 discharge 1h/d

≥ 15 h load resistor: 20ohms; EV: 0.9V  
 discharge 24h/d

≥ 60 h load resistor: 75ohms; EV: 0.9V  
 discharge 4h/d

**internal resistance:** ≤ 0.3 Ω at 1kHz, sine wave measurement  
 according to IEC 896-2

**shelf life:** 10 years under proper storage conditions

**leakage resistance**

over discharge: no leakage 20ohms continuous discharge for 48h; ta: 20°C; RH: 60±15%  
 high temperature: no leakage store 20days at ta: 60°C; RH:90±5%

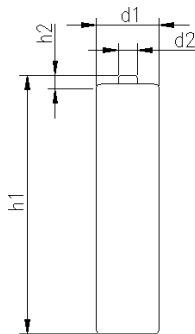
**ambient temperature range:** - 40...60 °C


recommended storage conditions: -20....40 °C ambient temperature  
 45...75 % rel. humidity

**mechanical specifications**

cell dimensions  
 diameter d1: 10.4 - 0.5 mm  
 diameter d2: 3.6 - 0.4 mm  
 height h1: 44.4 - 0.6 mm  
 height h2: 1.2 - 0.35 mm  
 weight: 8 ± 1 g

blister card dimensions: 85 x 120 mm  
 weight (incl. batteries): 28 ± 2 g



	<b>ANSMANN Specifications for model:</b>	<b>Ansmann Lithium Battery</b>
		<b>AAA - size 2pcs blister package</b>
	data sheet no. / part no.	5021013
	supplier no.	701801
	author / date	TG / 30.04.2013