



# The peak of performance.

## Ultimate Series: Intelligent motorised lens bullets, in 2.0MP & 12.0MP

Experience the best in surveillance with the Ultimate Series. These bullets offer the best in resolution and feature an extensive list of intelligent functions, including defogging, people counting, heat mapping, EIS and much more.

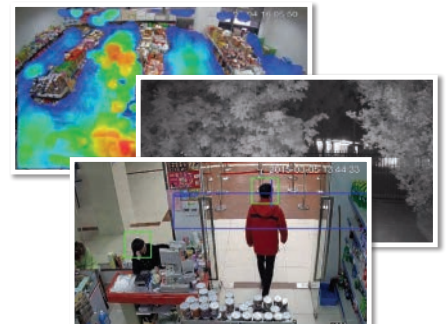
- Stream beyond 4K at 12.0MP (4000 x 3000) at 20fps
- Excellent low light performance; colour at 0.002 lux
- Motorised lens & auto iris for up to 4x optical zoom
- Up to 50m smart infrared; true day/night (auto ICR)
- MicroSD slot for recording at the edge up to 128GB
- H.265 high efficiency video compression technology
- Face detection & electronic image stabilisation
- Backlight/highlight compensation and WDR
- Alarm and audio interface; tester video output
- Full metal IP67/IK10 weather/vandal rated housing



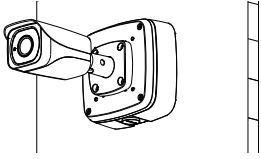
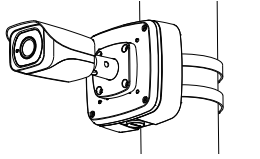
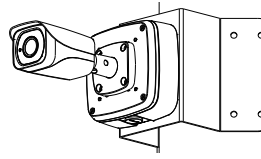
**Record at Beyond Ultra HD Quality**



**Exceptional Camera Functionality**



**Extensive Intelligent Functions**

Specifications		2.0MP Motorised Bullet	12.0MP Motorised Bullet	
Camera	Ordering Information	<b>CAM395</b> : Standard		
	Image Sensor	1/1.9" 2.0MP Progressive Scan CMOS	1/1.7" 12.0MP Progressive Scan CMOS	
	Effective Pixels	1920 (H) x 1080 (V)	4000 (H) x 3000 (V)	
	RAM / ROM	1024MB / 128MB		
	Min Illumination	0.002 Lux/F1.53 (Color), 0 Lux/F1.53 (IR on)	0.02 Lux/F1.53 (Color), 0 Lux/F1.53 (IR on)	
Lens	S/N Ratio	> 50dB		
	Infrared System	4 x Infrared LED, 50m range, Auto/manual on/off control		
	Lens / Iris	4.1 ~ 16.4mm F1.53 Motorised Varifocal Lens with Auto Iris	4.1 ~ 16.4mm F1.53 Motorised Varifocal Lens with Auto Iris	
	Field of View	Horizontal: 104°~33°, Vertical: 57°~18° (4x Optical Zoom)	Horizontal: 85°~35°, Vertical: 63°~26° (4x Optical Zoom)	
DORI	Focus	Auto Focus / 0.5m Min. Focus Distance		
	Detect (25px/m)	57m (wide) / 137m (tele)	115m (wide) / 227m (tele)	
	Observe (63px/m)	23m (wide) / 55m (tele)	46m (wide) / 111m (tele)	
	Recognise (125px/m)	11m (wide) / 27m (tele)	23m (wide) / 55m (tele)	
	Identify (250px/m)	6m (wide) / 14m (tele)	11m (wide) / 28m (tele)	
Video	Resolution	1080p (1920 x 1080) to CIF (352 x 288)	12.0MP (4000 x 3000) to CIF (352 x 288)	
	Frame Rate	Main	1080p (1 ~ 50fps)	12.0MP (1 ~ 20fps) / 8.0MP (1 ~ 25fps)
		Sub	D1 (1 ~ 50fps)	D1 (1 ~ 25fps)
		Third	1080p (1 ~ 50fps)	1080p (1 ~ 25fps)
	Video Compression	H.265+ / H.265 / H.264+ / H.264		
	Bit Rate	H.265: 14 ~ 6144Kbps / H.264: 24 ~ 10240Kbps	H.265: 14 ~ 9984Kbps / H.264: 24 ~ 16384Kbps	
	Bit Rate Control	Constant bit rate (CBR) / Variable bit rate (VBR)		
	Day/Night	Auto (ICR) / Color / B&W		
	Lighting Compensation	BLC / HLC / WDR (120dB) / SSA	BLC / HLC / Digital WDR / SSA	
	White Balance	Auto / Natural / Street Lamp / Outdoor / Manual		
IVS	Gain Control	Auto / Manual		
	Noise Reduction	3D DNR		
	Picture Control	Mirror / Flip (0°, 90°, 180°, 270°)		
	Intelligent Functions	Tripwire, Intrusion, Object Abandoned/Missing, Face Detection, Motion Detection (4 zones), Region of Interest (4 zones), Privacy Masking (4 zones), Smart Infrared, Electronic Image Stabilisation, Defog, People Counting, Heat Map		
Network	Ethernet	RJ-45 (100/1000 Base-T)		
	Protocol	HTTP; HTTPS; TCP; ARP; RTSP; RTP; UDP; RTCP; SMTP; FTP; DHCP; DNS; DDNS; PPPOE; H.265; H.264; TCP; ARP; RTSP; RTP; UDP; SMTP; FTP; DHCP; DNS; DDNS; PPPOE; IPv4/v6; QoS; UPnP; NTP; Bonjour; IEEE 802.1x; Multicast; ICMP; IGMP; SNMP; TLS		
	Streaming Method	Unicast / Multicast		
	Max. User Access	10 Users / 20 Users		
Interface	Video Interface	Video Tester Composite Output		
	Audio Interface	1 Input, 1 Output / Compression: G.711a, G.711mu, AAC, G.726		
	Alarm Interface	2 Input / 1 Output		
	RS485	N/A		
	Edge Storage	MicroSD Card Slot (up to 128GB) / NAS / Local PC		
Environmental	Interoperability	ONVIF / PSIA / CGI		
	Power Supply	12VDC / PoE+ (802.3at) (Class 4)		
	Power Consumption	<13W		
	Operating Conditions	-40° ~ +60° C / Less than 95% RH		
	Ingress Protection	IP67		
	Vandal Resistance	IK10		
	Housing	Metal		
	Pan/Tilt/Rotation	Pan: 0° ~ 360° ; Tilt: 0° ~ 90° ; Rotation: 0° ~ 360°		
Application	Dimensions	Ø273mm x 95mm x 96mm		
	Net Weight	1.12kg		
	Mounting Options	 Junction Box MB1036	 Pole Mount MB1036 + MB1027	 Corner Mount MB1036 + MB1026

Your local VIP Vision™ IP solutions professional: