



# Unparalleled versatility.

## Ultimate Series: Intelligent motorised lens domes, in 2.0MP & 12.0MP

Experience the best in surveillance with the Ultimate Series. These domes offer the best in resolution and feature an extensive list of intelligent functions, including defogging, people counting, heat mapping, EIS and much more.

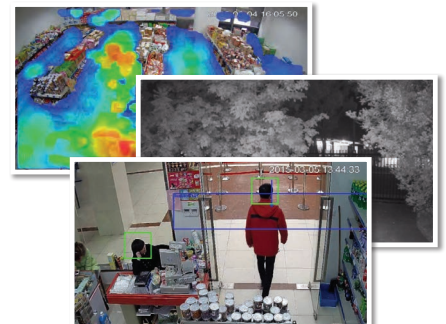
- Stream beyond 4K at 12.0MP (4000 x 3000) at 20fps
- Excellent low light performance; colour at 0.002 lux
- Motorised lens & auto iris for up to 4x optical zoom
- Up to 50m smart infrared; true day/night (auto ICR)
- MicroSD slot for recording at the edge up to 128GB
- H.265 high efficiency video compression technology
- Face detection & electronic image stabilisation
- Backlight/highlight compensation and WDR
- Alarm and audio interface; tester video output
- Metal IP67/IK10 weather/vandal rated housing



**Record at Beyond Ultra HD Quality**



**Exceptional Camera Functionality**



**Extensive Intelligent Functions**

| Specifications  |                                     | 2.0MP Motorised Dome   |                   | 12.0MP Motorised Dome                                      |  |                       |                                   |                                   |
|-----------------|-------------------------------------|--|-------------------|--|--|-----------------------|-----------------------------------|-----------------------------------|
| Camera          | Ordering Information                | VSIP2MPVDIRLV3: Standard   |                   | VSIP12MPVDIRMV2: Standard                                  |  |                       |                                   |                                   |
|                 | Image Sensor                        | 1/1.9" 2.0MP Progressive Scan CMOS   |                   | 1/1.7" 12.0MP Progressive Scan CMOS                        |  |                       |                                   |                                   |
|                 | Effective Pixels                    | 1920 (H) x 1080 (V)  |                   | 4000 (H) x 3000 (V)  |  |                       |                                   |                                   |
|                 | RAM / ROM                           | 1024MB / 128MB   |                   |  |  |                       |                                   |                                   |
|                 | Min Illumination                    | 0.002 Lux/F1.53 (Color), 0 Lux/F1.53 (IR on)   |                   | 0.02 Lux/F1.53 (Color), 0 Lux/F1.53 (IR on)                |  |                       |                                   |                                   |
|                 | S/N Ratio                           | > 50dB   |                   |  |  |                       |                                   |                                   |
| Lens            | Infrared System                     | 3 x Infrared LED, 50m range, Auto/manual on/off control  |                   |  |  |                       |                                   |                                   |
|                 | Lens / Iris                         | 4.1 ~ 16.4mm F1.53 Motorised Varifocal Lens with Auto Iris   |                   | 4.1 ~ 16.4mm F1.53 Motorised Varifocal Lens with Auto Iris |  |                       |                                   |                                   |
|                 | Field of View                       | Horizontal: 104°~33°, Vertical: 57°~18° (4x Optical Zoom)  |                   | Horizontal: 105°~35°, Vertical: 77°~26° (4x Optical Zoom)  |  |                       |                                   |                                   |
|                 | Focus                               | Auto Focus / 1m Min. Focus Distance  |                   |  |  |                       |                                   |                                   |
| DORI            | Detect (25px/m)                     | 57m (wide) / 137m (tele)   |                   | 115m (wide) / 227m (tele)                                  |  |                       |                                   |                                   |
|                 | Observe (63px/m)                    | 23m (wide) / 55m (tele)  |                   | 46m (wide) / 111m (tele)                                   |  |                       |                                   |                                   |
|                 | Recognise (125px/m)                 | 11m (wide) / 27m (tele)  |                   | 23m (wide) / 55m (tele)                                    |  |                       |                                   |                                   |
|                 | Identify (250px/m)                  | 6m (wide) / 14m (tele)   |                   | 11m (wide) / 28m (tele)                                    |  |                       |                                   |                                   |
| Video           | Resolution                          | 1080p (1920 x 1080) to CIF (352 x 288)   |                   | 12.0MP (4000 x 3000) to CIF (352 x 288)                    |  |                       |                                   |                                   |
|                 | Frame Rate                          | Main   | 1080p (1 ~ 50fps) |  | 12.0MP (1 ~ 20fps) / 8.0MP (1 ~ 25fps) |                       |                                   |                                   |
|                 |                                     | Sub  | D1 (1 ~ 50fps)    |  | D1 (1 ~ 25fps)                         |                       |                                   |                                   |
|                 |                                     | Third  | 1080p (1 ~ 50fps) |  | 1080p (1 ~ 25fps)                      |                       |                                   |                                   |
|                 | Video Compression                   | H.265+ / H.265 / H.264+ / H.264  |                   |  |  |                       |                                   |                                   |
|                 | Bit Rate                            | H.265: 14 ~ 6144Kbps / H.264: 24 ~ 10240Kbps   |                   | H.265: 14 ~ 9984Kbps / H.264: 24 ~ 16384Kbps               |  |                       |                                   |                                   |
|                 | Bit Rate Control                    | Constant bit rate (CBR) / Variable bit rate (VBR)  |                   |  |  |                       |                                   |                                   |
|                 | Day/Night                           | Auto (ICR) / Color / B&W   |                   |  |  |                       |                                   |                                   |
|                 | Lighting Compensation               | BLC / HLC / WDR (120dB) / SSA  |                   | BLC / HLC / Digital WDR / SSA                              |  |                       |                                   |                                   |
|                 | White Balance                       | Auto / Natural / Street Lamp / Outdoor / Manual  |                   |  |  |                       |                                   |                                   |
| Gain Control    | Auto / Manual                       |  |                   |  |  |                       |                                   |                                   |
| Noise Reduction | 3D DNR                              |  |                   |  |  |                       |                                   |                                   |
| Picture Control | Mirror / Flip (0°, 90°, 180°, 270°) |  |                   |  |  |                       |                                   |                                   |
| Network         | Intelligent Functions               | Tripwire, Intrusion, Object Abandoned/Missing, Face Detection, Motion Detection (4 zones), Region of Interest (4 zones), Privacy Masking (4 zones), Smart Infrared, Electronic Image Stabilisation, Defog, People Counting, Heat Map         |                   |  |  |                       |                                   |                                   |
|                 | Ethernet                            | RJ-45 (10/1000 Base-T)   |                   |  |  |                       |                                   |                                   |
|                 | Protocol                            | HTTP; HTTPS; TCP; ARP; RTSP; RTP; UDP; RTCP; SMTP; FTP; DHCP; DNS; DDNS; PPPOE; H.265; H.264; TCP; ARP; RTSP; RTP; UDP; SMTP; FTP; DHCP; DNS; DDNS; PPPOE; IPv4/IPv6; QoS; UPnP; NTP; Bonjour; IEEE 802.1x; Multicast; ICMP; IGMP; SNMP; TLS |                   |  |  |                       |                                   |                                   |
|                 | Streaming Method                    | Unicast / Multicast  |                   |  |  |                       |                                   |                                   |
| Interface       | Max. User Access                    | 10 Users / 20 Users  |                   |  |  |                       |                                   |                                   |
|                 | Video Interface                     | Video Tester Composite Output  |                   |  |  |                       |                                   |                                   |
|                 | Audio Interface                     | 1 Input, 1 Output / Compression: G.711a, G.711Mu, AAC, G.726   |                   |  |  |                       |                                   |                                   |
|                 | Alarm Interface                     | 1 Input / 1 Output   |                   |  |  |                       |                                   |                                   |
|                 | RS485                               | N/A  |                   |  |  |                       |                                   |                                   |
|                 | Edge Storage                        | MicroSD Card (up to 128GB) / NAS / Local PC  |                   |  |  |                       |                                   |                                   |
|                 | Interoperability                    | ONVIF / PSIA / CGI   |                   |  |  |                       |                                   |                                   |
| Environmental   | Power Supply                        | 12VDC / 24VAC / PoE+ (802.3at) (Class 4)   |                   | 12VDC / PoE+ (802.3at) (Class 4)                           |  |                       |                                   |                                   |
|                 | Power Consumption                   | <18W   |                   |  |  |                       |                                   |                                   |
|                 | Operating Conditions                | -40° ~ +60° C / Less than 95% RH   |                   |  |  |                       |                                   |                                   |
|                 | Ingress Protection                  | IP67   |                   |  |  |                       |                                   |                                   |
|                 | Vandal Resistance                   | IK10   |                   |  |  |                       |                                   |                                   |
|                 | Housing                             | Metal, Polycarbonate   |                   |  |  |                       |                                   |                                   |
|                 | Pan/Tilt/Rotation                   | Pan: 0° ~ 355°; Tilt: 0° ~ 65°; Rotation: 0° ~ 355°  |                   |  |  |                       |                                   |                                   |
|                 | Dimensions                          | Ø159mm x 118mm   |                   |  |  |                       |                                   |                                   |
| Application     | Net Weight                          | 0.96kg   |                   |  |  |                       |                                   |                                   |
|                 | Mounting Options                    |  |                   |  |  |                       |                                   |                                   |
|                 |                                     | Junction Box   | In-Ceiling Mount  | Rain Shield  | Ceiling Extension                      | Wall Mount            | Pole Mount                        | Corner Mount                      |
|                 |                                     | VSBKTA138  | VSBKT201C         | VSBKT210W  | VSBKT300C + VSBKTA101                  | VSBKT302S + VSBKTA101 | VSBKT302S + VSBKTA101 + VSBKTA150 | VSBKT302S + VSBKTA151 + VSBKTA101 |

Your local VIP Vision™ IP solutions professional: