

- AI People & Vehicle Detection**
- Intruder Deterrence**
- Alarm Light & Spotlight**
- 24/7 Colour**

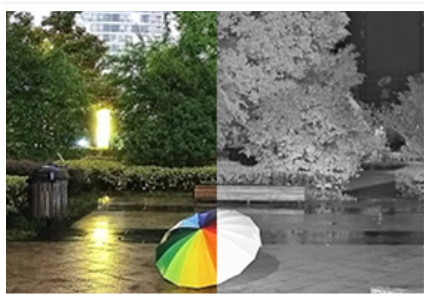


Instant intruder deterrence.

Professional AI Series: Fixed AI deterrence turrets in 5.0MP & 8.0MP

Featuring smart motion detection, the Professional AI Series can distinguish between people, vehicles & other motion to filter out false alarms. This camera series includes a loud siren & flashing strobe lights that activate in response to alarm events (such as motion detection), deterring intruders and preventing crimes before they happen.

- Stream up to 8.0MP (3840 x 2160) at 25fps
- Activates spotlight, flashing light & siren, and switches from IR to colour footage in response to alarm events
- 24/7 Colour low light footage as low as 0.0015lx
- Up to 30m infrared, BLC/HLC & true WDR (120dB)
- Intelligent AI detection to identify people & vehicles
- Smart Motion Detection (SMD+) & Perimeter Protection to prevent false alarms, using VIP Vision NVRs
- 3D digital noise reduction & auto white balance
- IP67 weather rated housing for outdoor use



24/7 Colour Night Performance



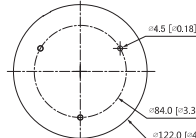
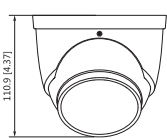
Built-in Siren & Flashing Light



Smart Person & Vehicle Detection

| Specifications | | 5.0MP Fixed AI Deterrence Turret | 8.0MP Fixed AI Deterrence Turret | |
|----------------------|---|---|--|---|
| Ordering Information | | CAM4104 / CAM4109 | | |
| Camera | Image Sensor | 1/2.7" 5.0MP Progressive Scan CMOS | 1/2.8" 8.0MP Progressive Scan CMOS | |
| | Effective Pixels | 2592 (H) x 1944 (V) | 3840 (H) x 2160 (V) | |
| | RAM / ROM | 512MB / 128MB | 512MB / 128MB | |
| | Min Illumination | 0.003 Lux/F1.0 (Color) | 0.004 Lux/F1.0 (Color) | |
| | Electronic Shutter | 1/3 ~ 1/100,000s | | |
| | S/N Ratio | > 56dB | | |
| | Infrared System | 1 x Infrared LED, 30m range, Auto/manual on/off control | | |
| | LED Illumination | 1 x Spotlight (Warm White), 1 x Red & Blue Alarm Light | | |
| | Lens | Lens / Iris | 2.8mm F1.0 Fixed Lens | 2.8mm F1.4 Fixed Lens |
| | | Field of View | Horizontal: 97°, Vertical: 70°, Diagonal: 128° | Horizontal: 106°, Vertical: 55°, Diagonal: 125° |
| Focus | | Auto Focus / 1.5m Min. Focus Distance | Auto Focus / 2m Min. Focus Distance | |
| DORI | Detect (25px/m) | 66m | 91m | |
| | Observe (63px/m) | 26m | 36m | |
| | Recognise (125px/m) | 13m | 18m | |
| | Identify (250px/m) | 7m | 9m | |
| Video | Resolution | 5.0MP (2592 x 1944) to CIF (352 x 288) | 8.0MP (3840 x 2160) to CIF (352 x 288) | |
| | Frame Rate | Main | 5.0MP (1 ~ 20fps) | 8.0MP (1 ~ 25fps) |
| | | Sub | 704 x 576 (1 ~ 25fps) | 704 x 576 (1 ~ 25fps) |
| | | Third | 1080p (1 ~ 25fps) | 1080p (1 ~ 25fps) |
| | Video Compression | H.265+ / H.265 / H.264+ / H.264 / H.264B / MJPEG | | |
| | Bit Rate | H.265: 3 ~ 20480Kbps / H.264: 3 ~ 20480Kbps | | |
| | Bit Rate Control | Constant bit rate (CBR) / Variable bit rate (VBR) | | |
| | Day/Night | Auto (ICR) / Color / B&W | | |
| | Lighting Compensation | BLC / HLC / WDR (120dB) | | |
| | Smart Scene Adaptive | SSA | | |
| White Balance | Auto / Natural / Street Lamp / Outdoor / Manual | | | |
| Gain Control | Auto / Manual | | | |
| Noise Reduction | 3D DNR | | | |
| Picture Control | Mirror / Flip (0°, 90°, 180°, 270°) | | | |
| IVS | Video Functions | Motion Detection (4 zones), Region of Interest (4 zones), Privacy Masking (4 zones), Smart Illumination, Defog, Object Abandoned / Missing, Heat Map Event Triggers: Motion Detection, Perimeter Protection, Video Tampering, Scene Changing, Network Disconnection, IP Address Conflict, Illegal Access, Storage Anomaly | | |
| | AI Functions | Perimeter Protection: People and vehicle detection using tripwire or intrusion rules Loitering detection: People gathering and parking detection | | |
| | Intelligent search | Search people or vehicle detection events (Perimeter Protection) | | |
| Network | Ethernet | RJ-45 (10/100Base-T) | | |
| | Protocol | IPv4; IPv6; HTTP; TCP; UDP; ARP; RTP; RTSP; RTCP; RTMP; SMTP; FTP; SFTP; DHCP; DNS; DDNS; QoS; UPnP; NTP; Multicast; ICMP; IGMP; NFS; SAMBA; PPPoE; SNMP | | |
| | Streaming Method | Unicast / Multicast | | |
| | Max. User Access | 20 Users (Total bandwidth: 72MB) | | |
| Interface | Video Interface | N/A | | |
| | Audio Interface | Built-in Mic & Built-in Speaker / Audio Compression - PCM; G.711a; G.711Mu; G.726; G.723 | | |
| | Alarm Interface | 1 channel in: 5mA 3-5VDC / 1 channel out: 300mA 12VDC | | |
| | RS485 | N/A | | |
| | Edge Storage | MicroSD Card (up to 256GB) / NAS / FTP / SFTP | | |
| Interoperability | ONVIF (Profile S, Profile G, Profile T) / P2P / CGI / Milestone | | | |
| Environmental | Power Supply | 12VDC / PoE (802.3af) | | |
| | Power Consumption | Basic: 1.86W (12VDC) / 4.18W (PoE) / Max (IR & LED on): 6.5W (12VDC) / 8.8W (PoE) / Basic: 2.9 W (12VDC) / 5W (PoE) / Max (IR & LED on): 7.8W (12VDC) / 9.6W (PoE) | | |
| | Operating Conditions | -40°C ~ +60°C / ≤95% RH | | |
| | Ingress Protection | IP67 | | |
| | Vandal Resistance | N/A | | |
| | Housing | Metal | | |
| | Pan/Tilt/Rotation | Pan: 0° ~ 360°, Tilt: 0° ~ 78°, Rotation: 0° ~ 360° | | |
| | Dimensions | Ø122mm x 111mm | | |
| Net Weight | 0.75kg | | | |

Application



| Junction Box | | Wall Mount |
|---------------------|---------------------|-----------------|
| MB1048 | | VSBKTB205W |
| Corner Mount | Pole Mount | Ceiling Mount |
| VSBKTB205W + MB1026 | VSBKTB205W + MB1027 | MB1060 + MB1057 |

Your local VIP Vision™ IP solutions professional: