



IP Intercom Systems for Homes and Apartments

Improve accessibility and remain secure from anywhere.



**Answer your door
from anywhere in the world.**



Improved access security.

VIP Vision™ IP intercom solutions for home & business

The Residential IP intercom range offers elegant access solutions and is ideal for apartments, homes, gated residences, and small businesses.

IP Systems Integration

Being IP based, you are able to integrate the VIP Vision™ intercom range into existing PC or surveillance networks. Value add with VIP Vision IP CCTV surveillance systems and IP intercoms.

- View VIP Vision CCTV cameras' video stream on your IP intercom monitor, just like you would with the door station camera.
- Turn each monitor into a surveillance station.
- Cameras feed is at monitor display resolution.

Simple Installation

The residential models featured in the VIP Vision™ IP intercom range are easy to install and are eminently expandable to accommodate larger premises.

- Installation for a single door station and monitor is as easy as connecting both by CAT5 cable, then providing power.
- Use up to 6 indoor monitors & door stations.
- Use Power over Ethernet via a PoE receiver.

Contents



VIP Vision™ elegant IP intercom solutions



Residential IP Intercom Series with WiFi
IP based system also featuring WiFi wireless connectivity making it one of the easiest systems to install.



Residential 2-Wire IP Intercom Series
Upgrade and experience a multitude of modern intercom features, all using your existing two-wire infrastructure.



Commercial Villa IP Intercom Series
Experience a multitude of modern intercom features which can be easily expanded and managed via an IP based network infrastructure.



VIP Vision™ IP Intercom Accessories
IP based accessories from PoE switches to adaptors and electronic door switches to complete your installation.



Elegant intercom solutions.

Residential IP Intercom System with WiFi Connectivity

The VIP Vision Residential IP Video Intercom features wireless connectivity making it one of the easiest systems to install. Experience a multitude of modern intercom features, all using your existing network or WiFi infrastructure.

- 1.0 megapixel door station camera with night-vision
- IP based for easy installation and expandability
- Interfaces with electronic door strikes and sensors
- Intuitive single-button interface for ease of use
- Monitor in elegant black or white gloss finish
- Slim profile 7" touchscreen indoor intercom monitor
- Receive door bell notifications, remote view, remote
- Unlock and two-way talk via iOS & Android devices




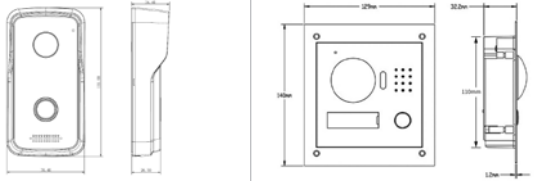

1
Install your WiFi intercom system simply by connecting to power





2
Connect your WiFi intercom to your network and the Internet



3
Live view, snap images, answer visitors and even unlock doors from anywhere

Model	INTIPRDSDB	INTIPRDSVW	
General			
	Main Processor	Embedded Microprocessor	Embedded Microprocessor
	Operating System	Embedded Linux	Embedded Linux
	Backlit Interface	Yes	N/A
	Card Support	Yes: Built-in NFC Card Reader	N/A
	Tamper Detection	Yes	Yes
Camera	Image Sensor	1.0 Megapixel CMOS	1.0 Megapixel CMOS
	Video Compression	H.264	H.264
	Audio Input	Omni-directional Microphone	Omni-directional Microphone
	Audio Output	Embedded Loudspeaker	Embedded Loudspeaker
	Bidirectional Talk	Support	Support
	Internal Capacity	MicroSD port max 64GB	128MB
	Ethernet	10M/100Mbps Self-adaptive	10M/100Mbps Self-adaptive
	Network Protocol	TCP/IP	TCP/IP
	Vandal Resistant	N/A	IK07
	Ingress Protection	IP65	IP54
Environmental	Installation	Surface of Flush Mounting Kit	Mounting Kit
	Power Input	12VDC / PoE (802.3af)	12VDC
	Power Consumption	Standby < 1W / Operation < 10W	Standby < 1W / Operation < 10W
	Dimensions	135 x 70 x 34mm	130 x 140 x 32mm
	Weight	0.40kg	0.80kg
Accessories			
	 <p>INTIPRDSVW-RS: Surface mount shield INTIPRDSVW-FMA: Flush mount box</p>		

Model	INTIPMONDB / INTIPMONDW	
General		
	Main Processor	Embedded Microprocessor
Operating System	Embedded Linux	
Monitor	Video Compression	H.264
	Audio Input	Omni-directional Microphone
	Audio Output	Embedded Loudspeaker
	Bidirectional Talk	Support
	Display Size	7" Colour TFT LCD
	Display Resolution	1024 x 600
	Alarm Support	6 Input / 1 Output
	Operational Input	Capacitive Touchscreen / On-unit Soft Keys
	Internal Capacity	MicroSD port max 32GB
	Ethernet	10M/100Mbps Self-adaptive
Environmental	Network Protocol	TCP/IP
	Operating Temperature	-10 ~ +55°C / 10 ~ 90%RH (max.)
	Installation	Wall Mounting Kit
	Power Input	12VDC / PoE (802.3af)
	Power Consumption	Standby < 1W / Operation < 7W
Accessories	Dimensions	215 x 140 x 21mm
	Weight	0.80kg
Order		
	Product Variants by Model	INTIPMONDB: Black INTIPMONDW: White



The VIP Vision™ IP Intercom Kit with WiFi

INTIPRKITD Series Includes:

- 1 x Residential door station with 1.0 megapixel camera
- 1 x Residential intercom monitor with 7" TFT LCD display
- 1 x 30m CAT5 cable to connect door station and monitor
- Power supplies for the door station and monitor



Elegant intercom upgrade.

Residential IP Intercom System Upgrade for 2-Wire System

The 2-wire Residential IP Video Intercom is the perfect upgrade solution to your old intercom or door bell system. Upgrade and experience a multitude of modern intercom features, all using your existing two-wire infrastructure.

- 1.0MP door station camera with low light vision
- Connects to your network using Network Controller
- Interfaces with electronic door strikes and sensors
- Intuitive single-button interface for ease of use
- Surface mount; white gloss & aluminium
- Slim profile 7" touchscreen indoor intercom monitor
- Receive door bell notifications, remote view, remote
- Unlock and two-way talk via iOS & Android devices




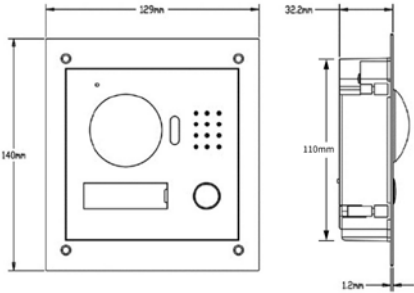

1
Upgrade your intercom system to IP using the existing two-wire infrastructure


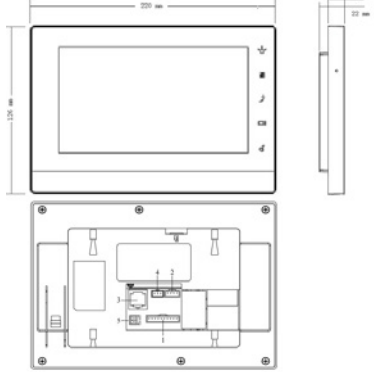


2
Expand your system by connecting your IP intercom to your network and the Internet



3
Live view, snap images, answer visitors and even unlock doors from anywhere

Model	INTIPRDSVW2W		
General	Product Image		
	Main Processor	Embedded Microprocessor	
	Operating System	Embedded Linux	
	Backlit Interface	N/A	
	Card Support	N/A	
	Tamper Detection	Yes	
	Camera	Image Sensor	1.0 Megapixel CMOS
		Video Compression	H.264
		Audio Input	Omni-directional Microphone
		Audio Output	Embedded Loudspeaker
Bidirectional Talk		Support	
Internal Capacity		128MB	
Ethernet		10M/100Mbps Self-adaptive	
Network Protocol		TCP/IP	
Vandal Resistant		IK07	
Ingress Protection		IP54	
Environmental	Installation	Mounting Kit	
	Power Input	24VDC	
	Power Consumption	Standby < 1W / Operation < 7W	
	Dimensions	130 x 140 x 32mm	
	Weight	0.80kg	
Accessories	Product Diagram		
	Compatible Brackets	 INTIPRDSVW-RS: Surface mount shield INTIPRDSVW-FMA: Flush mount box	
Order	Product Variants by Model	INTIPRDSVW: Standard, as above	

Model	INTIPMONFB2W		
General	Product Image		
	Main Processor	Embedded Microprocessor	
	Operating System	Embedded Linux	
	Monitor	Video Compression	H.264
		Audio Input	Omni-directional Microphone
		Audio Output	Embedded Loudspeaker
		Bidirectional Talk	Support
		Display Size	7" Colour TFT LCD
		Display Resolution	SVGA (800 x 480)
		Alarm Support	Yes; 6 Input channels / 1 output channel
Operational Input		Resistive Touchscreen / On-unit Soft Keys	
Internal Capacity		4GB MicroSD Card pluggable	
Ethernet		10M/100Mbps adaptive	
Network Protocol	TCP/IP		
Environmental	Operating Temperature	-10 ~ +60°C / 10 ~ 90%RH (max.)	
	Installation	Wall Mounting Kit	
	Power Input	24VDC	
	Power Consumption	Standby < 1.5W / Operation < 7W	
	Dimensions	200 x 136 x 22mm	
Weight	0.80kg		
Order	Product Diagram		
	Product Variants by Model	INTIPMONFB2W: Standard, as above	

2-Wire Intercom Network Controller

Model: INTIPNC2W

Connect your 2-wire system to the Internet using the 2-wire Intercom Network Controller. Then link the app to your intercom to answer visitors, take snapshots/recording and even unlock doors, all from your smartphone or tablet.




- Facilitates network/power connectivity to 4 x 2-wire intercom devices
- Connect intercom system to the Internet for use with remote view app
- Provides 24VDC power with a maximum power load of 30W
- Includes surface mount and DIN-rail mounting options

Residential IP Intercom System Map with WiFi

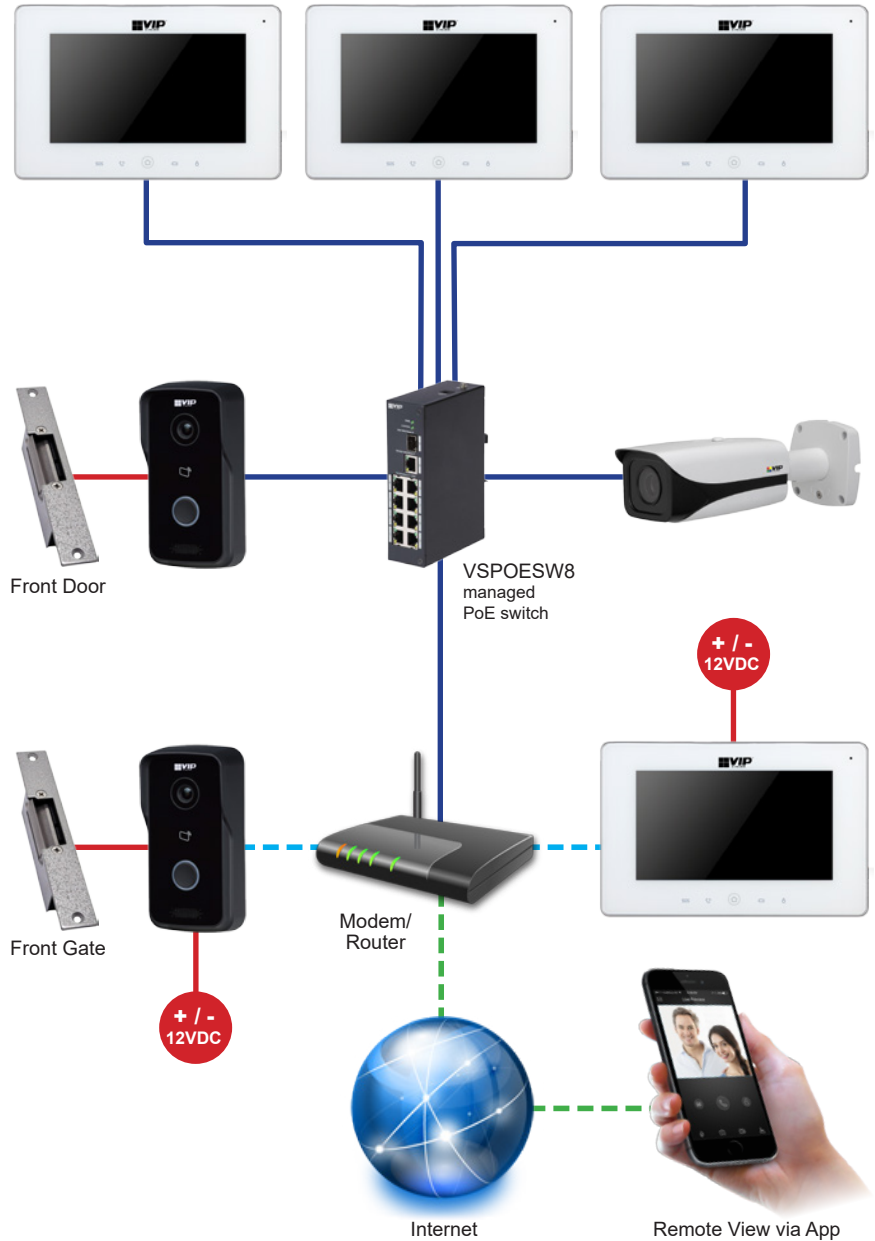
System Map

Easily install the VIP Vision IP Intercom System using the existing IP or WiFi network.

The system can integrate IP cameras, up to 5 indoor intercom monitors and up to 20 door stations.



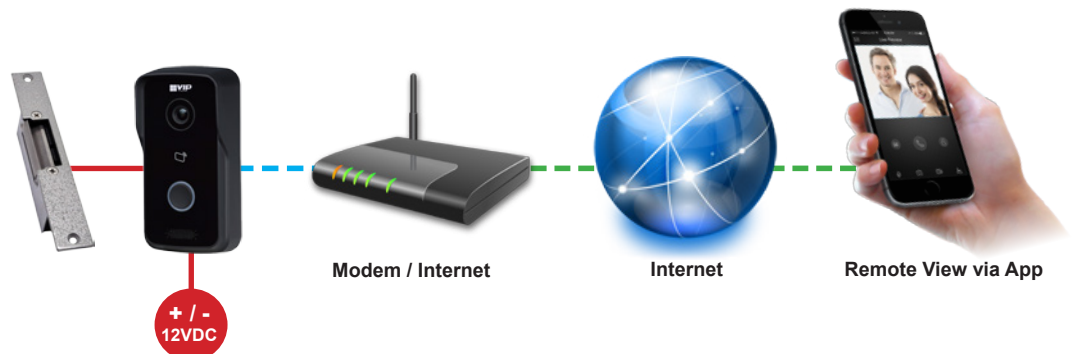
VSPOE-SW8
Power over Ethernet switch comprises 10/100Mbps PoE switch in an 8 port configuration. This two-layer industrial POE switch provides high-speed data forwarding and is widely used in networking and wireless systems, surveillance, IP telephony and more.



	Cat5e (PoE)
	Power
	WiFi
	3G/4G

System Map (door station only)

The intuitive door station can also be used without an intercom monitor by using a smart phone or tablet instead via the app.




Residential 2-Wire IP Intercom System Map

System Map

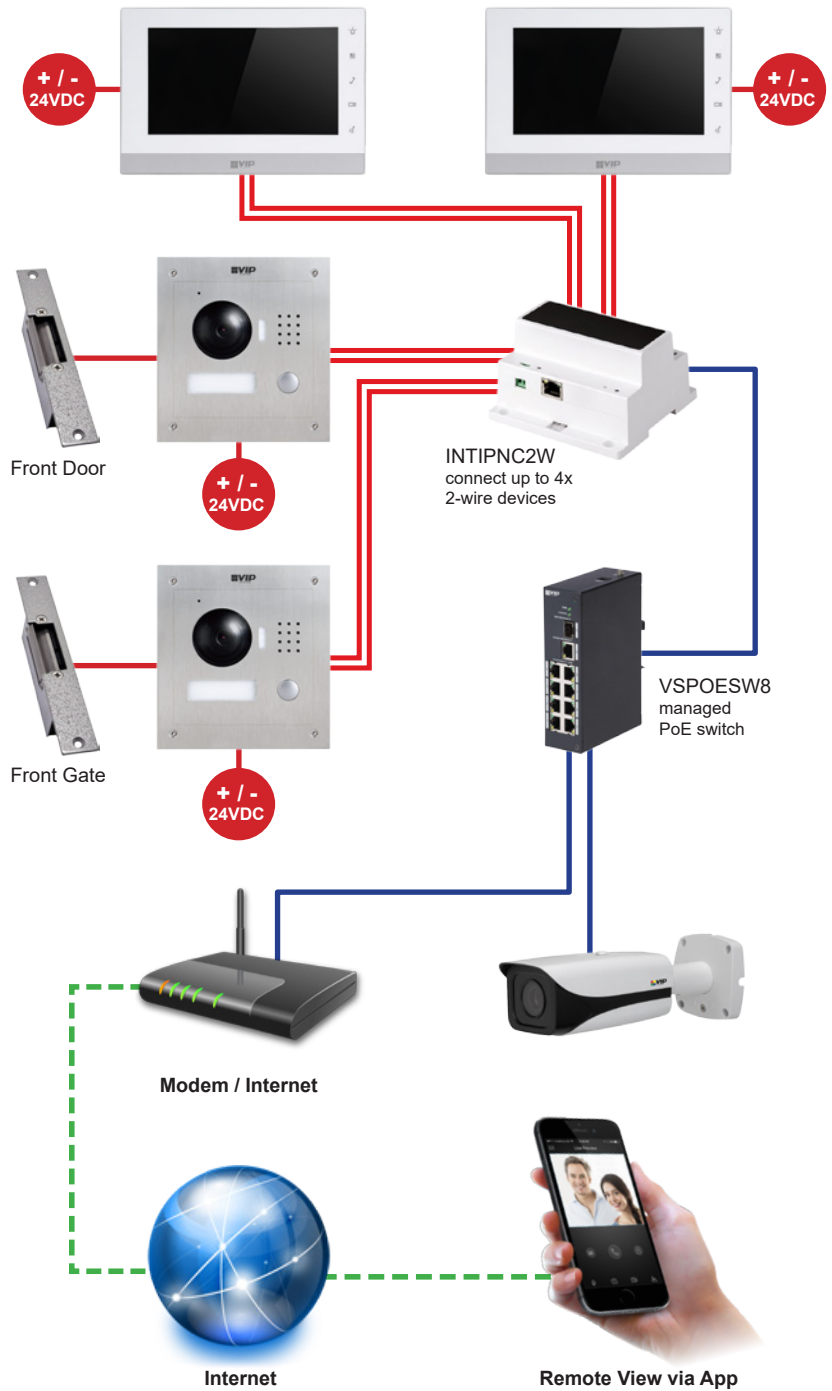
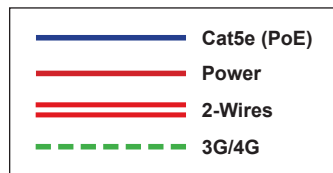
Easily install the VIP Vision 2-Wire Intercom System using the existing 2-wire door bell and WiFi network.

The system can integrate multiple indoor intercom monitors.



INTIPNC2W
Connect your 2-wire system to the Internet using the 2-wire Intercom Network Controller. Then link the app to your intercom to answer visitors, take snapshots/recording and even unlock doors, all from your smartphone or tablet.

- Facilitates network/power connectivity to 4 x 2-wire intercom devices
- Connect intercom system to the Internet for use with remote view app
- Provides 24VDC power with a maximum power load of 30W
- Includes surface mount and DIN-rail mounting options



System Map (standalone system)

The system can integrate multiple indoor intercom monitors without needing a network controller.





Tailor made solutions.

Commercial Villa IP Intercom Series for customised installations

Achieve increased security and convenience, and experience a multitude of modern intercom features with additional access control variations in a flexible module design.

- Flexible modular design for all applications
- IP based for easy installation and expansion
- Interfaces with electronic door strikes and sensors
- Intuitive single-button interface for ease of use
- 1.0MP door station camera with low light vision
- Slim profile 7" touchscreen indoor intercom monitor
- Variety of surface and flush mount housing layouts
- Convenient communication in small apartments



Expand up to 100x indoor monitors and up to 20x door stations



Easy IP based installation and management via Smart PSS



Flexible modular design for multiple access solutions

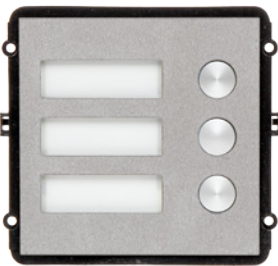
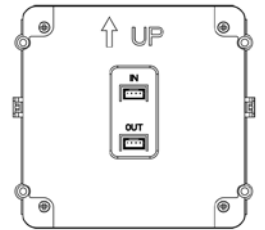
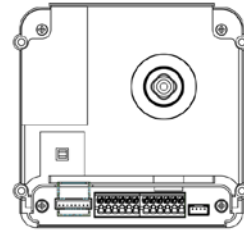


Villa IP Camera Module

The INTIPVDSC is a compact door station camera featuring a robust stainless steel front panel, simple single button operation and a 1.0 megapixel camera that operates in low light conditions. It is IP54 weather resistant, IK07 vandal resistant and is compatible with the entire VIP Vision Villa IP Intercom Series and supporting accessories including door strikes and networking switches.

The camera module works as a central control unit and supplies power to the optional modules below.

Image right: Camera Module back
Image far right: Optional Module back



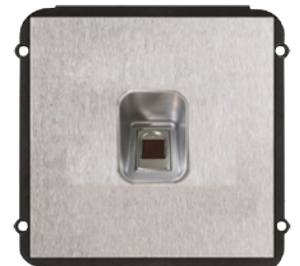
Button Module
INTIPVDSB



Keypad Module
INTIPVDSK



Reader Module
INTIPVDSR



Fingerprint Module
INTIPVDSF



IP Intercom Indoor Monitor

INTIPMONDB / INTIPMONDW

This streamline indoor monitor has a number of features to accompany the Villa IP Intercom Series door station modules including comprehensive call history logs, DND (Do Not Disturb), audio/video messaging, snapshots and door station camera live view, all recorded to the onboard MicroSD card up to 32GB.

Surface Mount Housing Kit



2x Module
INTIPVDSSB2 + INTIPVDSFP2

3x Module
INTIPVDSSB3 + INTIPVDSFP3

Flush Mount Housing Kit



2x Module
INTIPVDSEB2 + INTIPVDSFP2

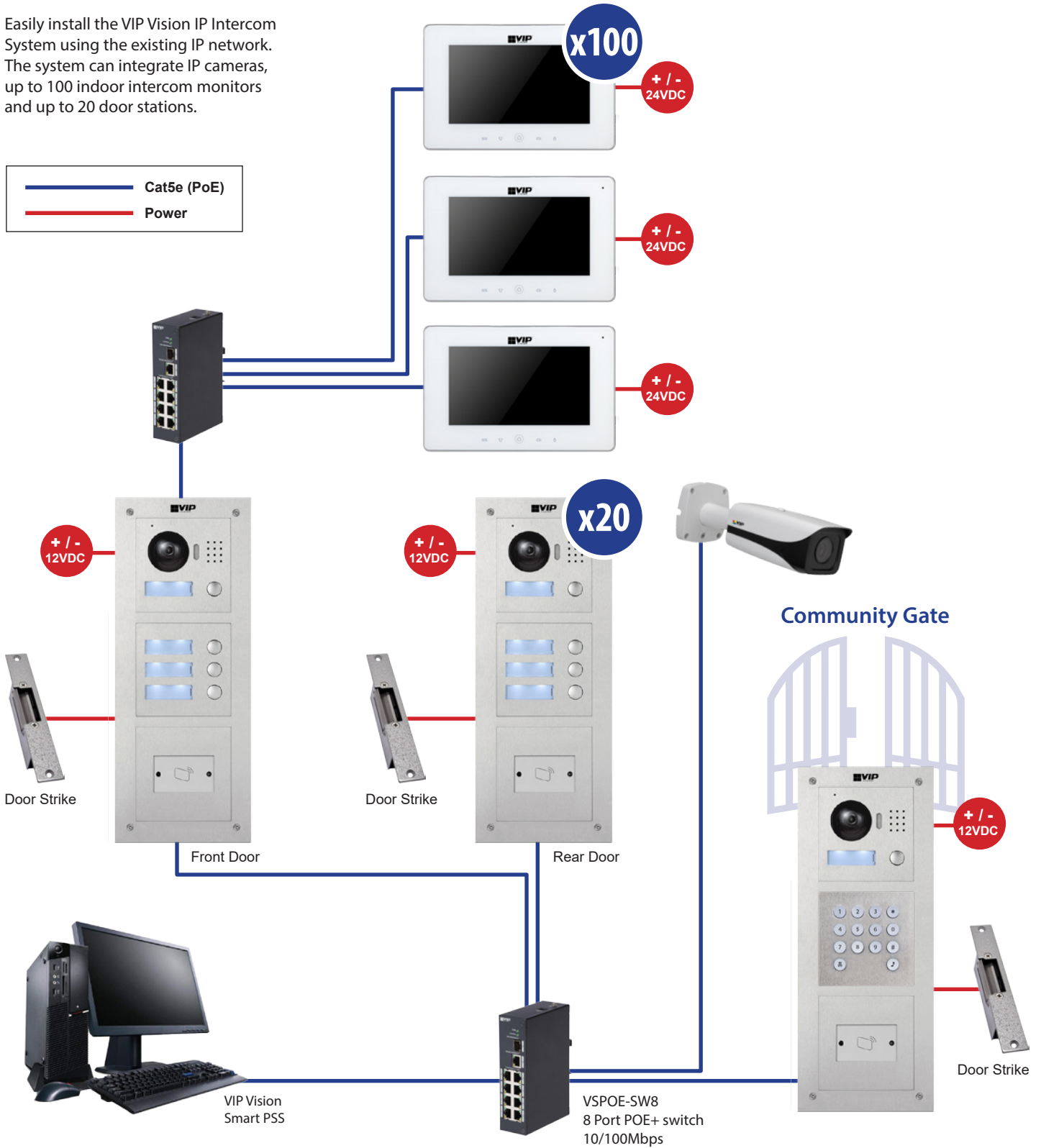
3x Module
INTIPVDSEB3 + INTIPVDSFP3

9x Module
INTIPVDSEB9 + INTIPVDSFP9

Small Apartment Villa IP Intercom System Map

System Map

Easily install the VIP Vision IP Intercom System using the existing IP network. The system can integrate IP cameras, up to 100 indoor intercom monitors and up to 20 door stations.



VIP Vision™ IP Intercom Accessories



2 Wire Network Controller

Model: INTIPNC2W

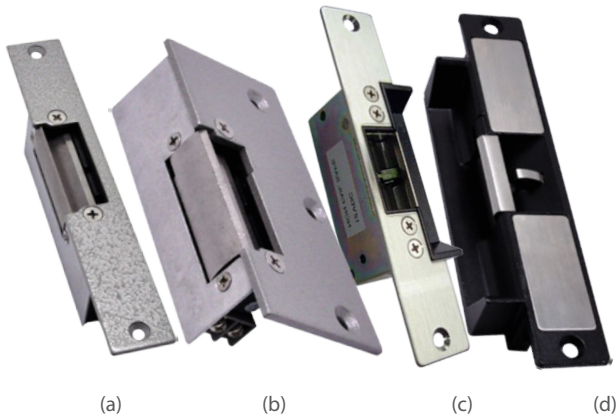
- Converts 2 wire to Cat 5e
- Connects 4x 2 wire groups
- Complies with IEEE802.3af standard



Power Over Ethernet (PoE) Receiver

Model: WT-CAT5POER

- Provides Power over Ethernet solution in VIP Vision™ IP intercom systems*
- Each door station and indoor monitor requires their own PoE receiver
- Ethernet line-in Power over Ethernet receiver
- Provides 5VDC and 12VDC power output up to 100m
- Supports gigabit speeds (1000Mbps) and is 802.3af compliant
- * Intercom PoE setups also require a PoE switch, see VS8PORTPOEV2



Electronic Door Strikes

(a) Model: ACLOC100

- Compact mortise fail-secure door strike (12VDC at 400mA)
- 9.6mm keeper depth with 9.5mm applicable latch size

(b) Model: ACLOC101

- Surface mount fail-secure door strike (12VDC at 400mA)
- 9.6mm keeper depth with 9.5mm applicable latch size

(c) Model: ACLOC102

- Monitored mortise mount door strike (12VDC at 260mA)
- Fail-secure / fail-safe convertible with door-latch and lock sensors
- 12.7mm keeper depth with 12.7mm applicable latch size

(d) Model: ACLOC103

- Monitored mortise mount door strike (12/24VDC or AC input)
- Fail-secure / fail-safe convertible with door-latch and lock sensors
- 10.8mm keeper depth with 12.7mm applicable latch size



VIP Vision Managed Ethernet Switches

VSPOE Series: See models below

- Two-layer network management PoE switch
- Provides data transfer rates up to 1000Mbps
- Easy remote management system featuring port rate control, VLAN settings, security, PoE output setup and more

Model	Ports	Brand	PoE Per Port	PoE Total	Expansion
VSPOE-SW8	8-port 10/100	VIP Vision	≤30W	93W	1 x 10/100/1000 and 1 x 1000 uplink ports
VSPOE-SW16	16-port 10/100		≤30W	250W	2 x 10/100/1000 uplink ports
VSPOE-SW24	24-port 10/100		≤30W	370W	



Crucial evidence. Always.

